



# SNOWSOUND

ACOUSTIC FIBER TEXTILES



Index

Company Profile	3
Research & Technology	8
Inspirations	15
Textile Finishes	44

# COMPANY PROFILE

**In a world increasingly filled with noise, finding moments of tranquility and focus can feel like a distant dream.**

But what if the solution wasn't about blocking out sound entirely, but rather shaping it? Enter Snowsound, a revolutionary approach to acoustic design that goes beyond simple sound absorption. Imagine spaces where conversations flow effortlessly, productivity soars, and a sense of calm pervades – that's the transformative power of Snowsound. By ingeniously manipulating sound waves, Snowsound creates environments that are not only acoustically optimized but also visually stunning, seamlessly blending form and function.





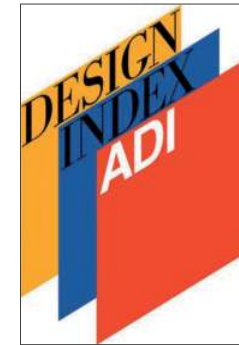


**ACOUSTIC &  
DESIGN SOLUTIONS**



# OVER 60 INTERNATIONAL AWARDS

The technological innovations of SNOWSOUND have achieved major international recognition. With its products displayed in design museums around the world, SNOWSOUND has received over 60 international awards, including seven Best of NeoCon Silver and Gold awards, three Compasso d'Oro awards, three German Design awards, and fourteen ADI Design Index awards.





# SUSTAINABILITY

Snowsound has always been attentive to environmental issues and eco-sustainability. This is why, when technically feasible, we use recyclable or reusable materials. Production consists mainly of single-material, easily recyclable objects; objects made of multiple materials are, in most cases, designed to be disassembled. This allows for separate recycling of the individual components.





# RESEARCH & TECHNOLOGY



# SNOWSOUND OPEN LAB

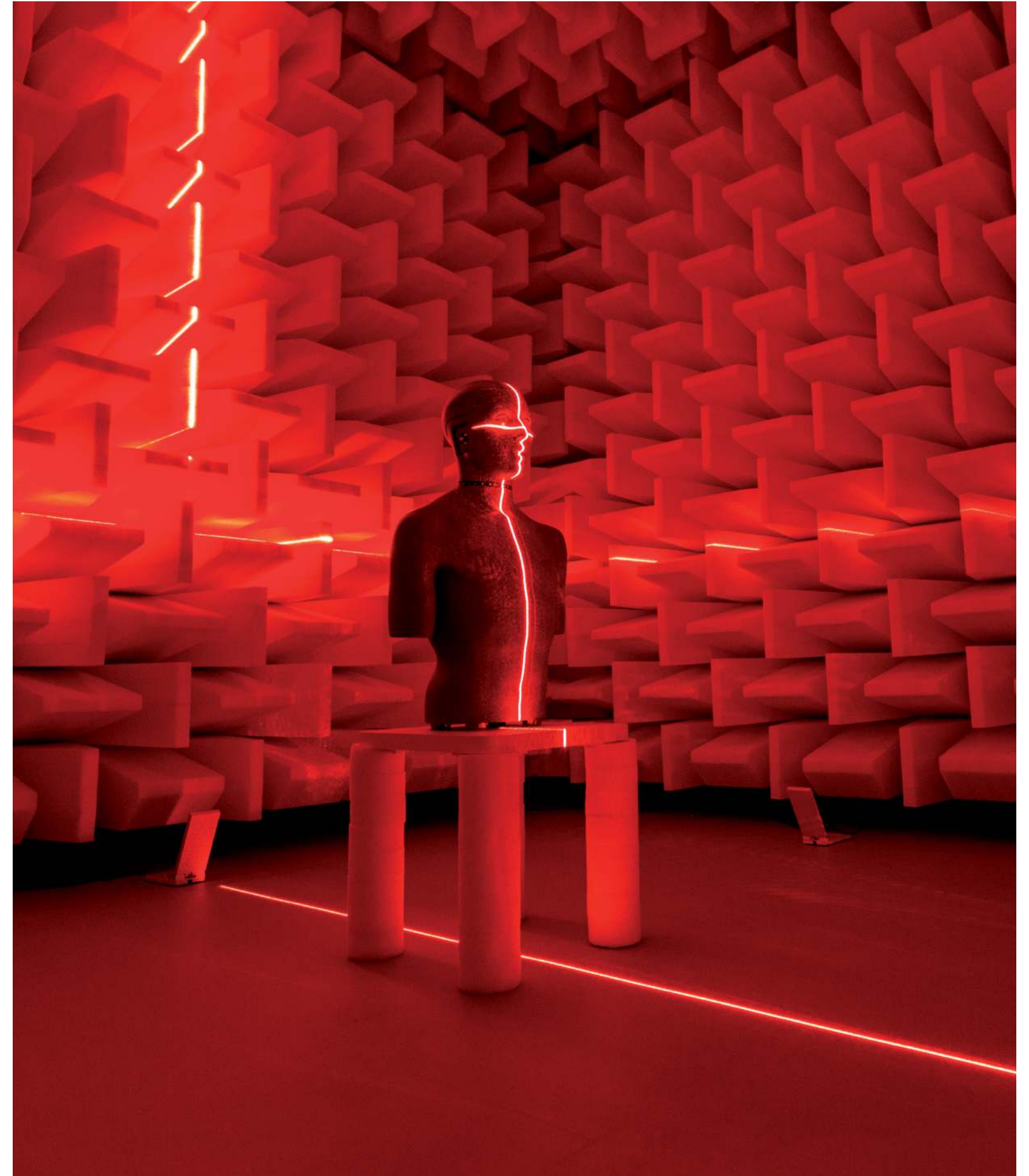


Snowsound Open Lab is an advanced facility housing seven futuristic laboratories dedicated to theoretical and applied research in technology, acoustics, and physics. The purpose of this research facility is to conduct experiments on the behavior of sound, on human perceptive capacities, and on the effects of sound on people.



Discover Snowsound Open Lab

SNOWSOUND



Acoustic Fiber Textiles





**WHERE DESIGN &  
RESEARCH MEET**





**A PLACE FOR  
INNOVATION**



# SNOWSOUND FIBER ACOUSTIC TEXTILES

## PATENTED

The patented Snowsound Fiber technology is based on soft, interwoven polyester acoustic fibers that are inherently fire-resistant. The interaction between Snowsound Fiber and air allows for controlling reverberation while precisely adjusting the environment's acoustics, taking advantage of installation methods, the product's surface, and distance from the wall. This reduces annoying acoustic reverberation, improving the quality of both life and work.



Experience the difference  
with/without our curtains





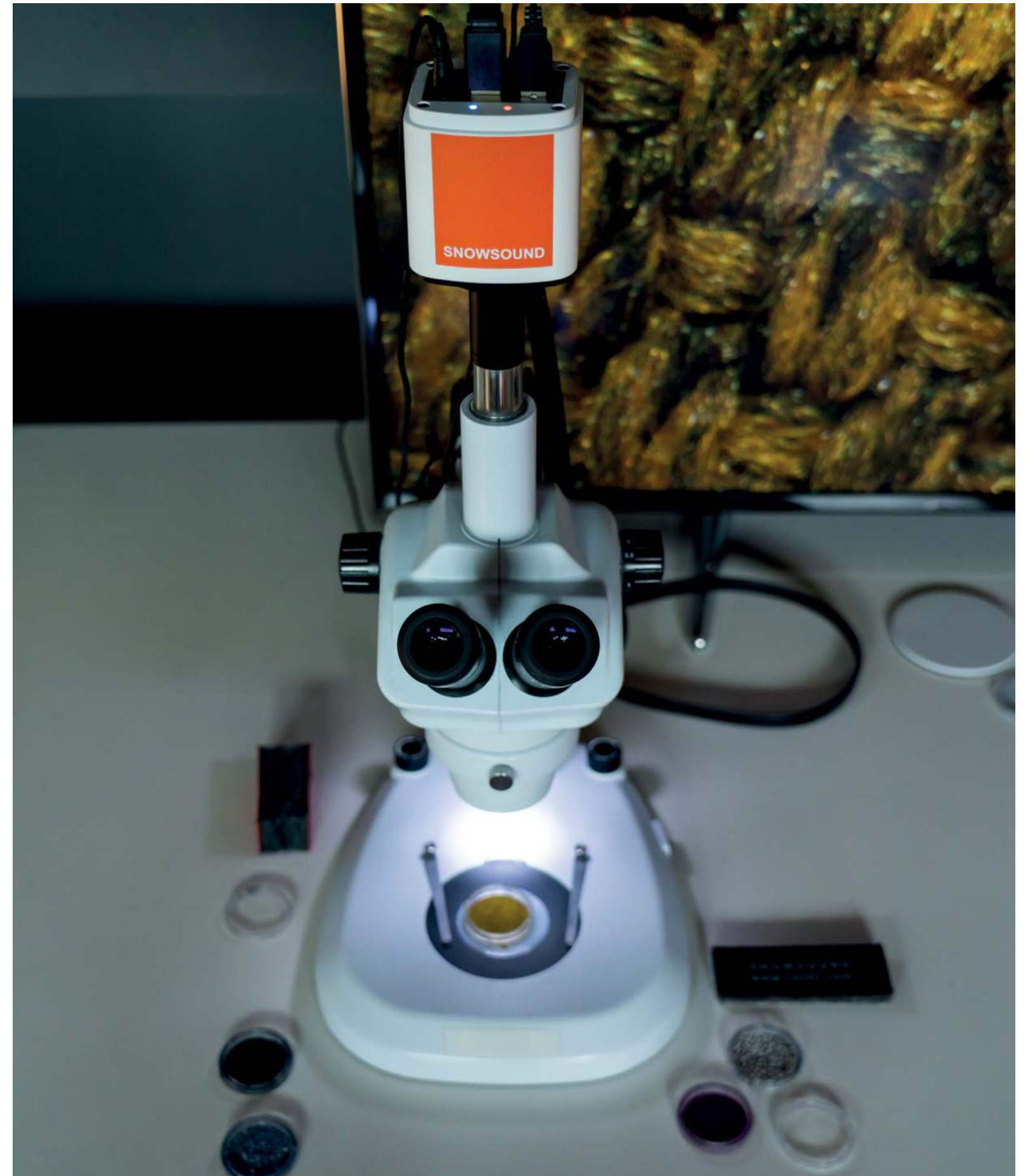
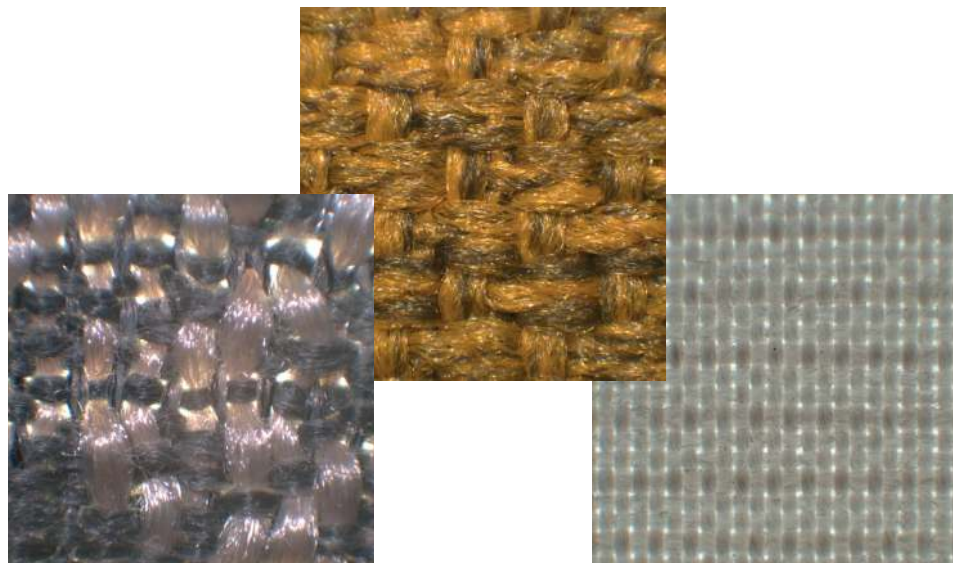


**A PATENTED TECHNOLOGY  
HIDDEN IN FABRICS**



# WHERE SCIENCE MEETS DESIGN

Snowsound Fiber materials have been rigorously tested according to the UNI EN ISO 354 standard. Detailed graphs for each application are available on our website. By strategically selecting different Snowsound Fiber materials and utilizing various installation methods, you can achieve selective sound absorption targeting specific frequency ranges (low, mid, or high) or create a more uniform absorption across all frequencies. This versatility allows Snowsound Fiber to adapt to your needs, with the potential to achieve the highest level of sound absorption (Class A) depending on the chosen material and installation approach.





# INSPIRATIONS



# A QUIETER WORKSPACE EQUALS BETTER WORK



Gensler  
Miami, USA

Fiber 6-607









Convey  
Miramar, USA

Fiber 3-304







# FIND ACOUSTIC PRIVACY IN A NOISY SPACE



Office

Fiber 3-309













The Splash Lab  
USA

Fiber 3-304









The Splash Lab  
USA



Fiber 3-304







# HEAR BETTER TO UNDERSTAND BETTER



Università Bocconi  
Milano, Italy

Fiber 2-202







# TASTES GOOD, SOUNDS BETTER



Restaurant Chai  
Belgium

Fiber 6-604





Sirrah  
New York City

Fiber 6-604









Frangranze Pizzeria  
Chieti, Italy

Fiber 6-608







# HOME QUIET HOME



Living Room

Fiber 7-701







# HEAR BETTER TO LEARN MORE



MAXXI  
Roma, Italy

Fiber 2-200







# GREAT PERFORMANCE REQUIRES ACOUSTIC COMFORT



New Horizons Community Center  
Irvine USA

Fiber 3-308







# TRANQUILITY & COMFORT WHILE TRAVELING



Hotel Room

Fiber 3-309



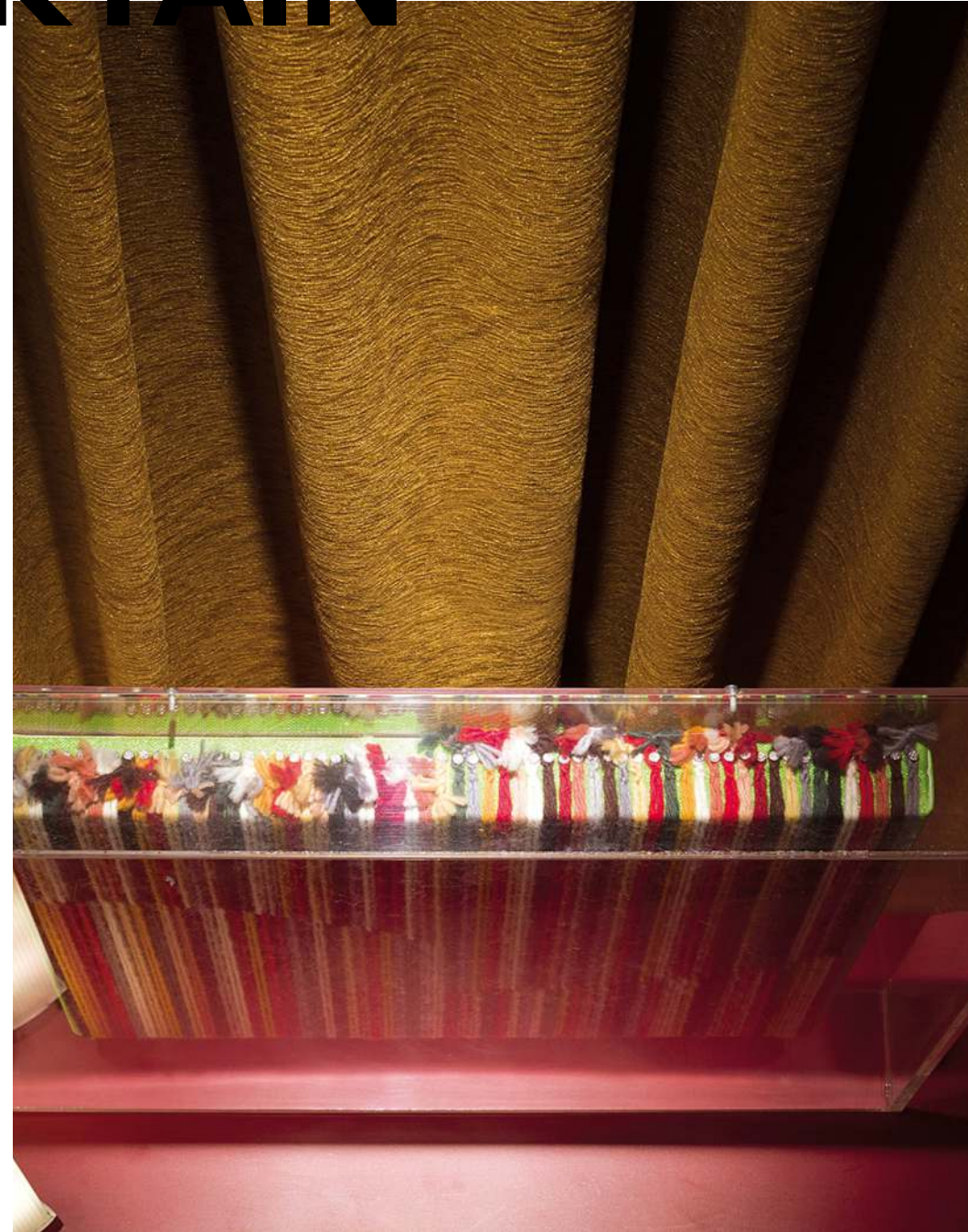




# ACOUSTIC COMFORT CONCEALED IN A CURTAIN



Fiber 3–309



Fiber 6–610







# TEXTILE FINISHES



# FIBER 2

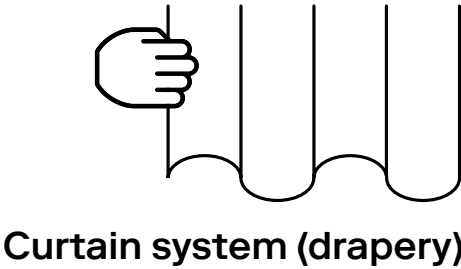
Light acoustic fabric in solid color with Millerighe striped piquet-type weave. This fabric has a direction of laying with stripes in the direction of the weft (horizontal). Piquet Millerighe is the fabric obtained with a weave with small reliefs, in this case a very fine stripe, normally white or light with reliefs of the same color (color on color).

## PERFORMANCE

Flame Resistance	Passes NFPA 701 – NFPA 260 – CAL. TB 117 – UL 723 & ASTM E-84 Class A
Environment	100% Recyclable and GREENGUARD GOLD Certified LEED v4 Credits and Certification. Declare Label. LBC Red List Free

## PHYSICAL PROPERTIES

Content	100% Inherently Fire Resistant, Acoustic Sound Absorbing Polyester Fibers with Patented Snowsound Technology
Width	118” // 300 cm
Thickness	0.6 mm





# FIBER 2R



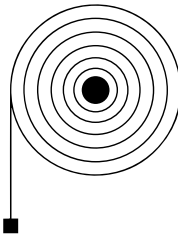
Light acoustic fabric in a solid color with piquet-type Millerighe striped reinforcement, enhanced with thermosetting agents that provide rigidity in one direction (in the direction of the horizontal lines). The “R” designation indicates that this textile is specially designed for roller blinds and roller shades. Millerighe Piquet is the fabric obtained with a weave featuring small reliefs, in this case, a very fine stripe, normally white or light with reliefs of the same color (color on color).

## PERFORMANCE

Flame Resistance	Passes NFPA 701 – NFPA 260 – CAL. TB 117 – UL 723 & ASTM E 84 Class A
Environment	100% Recyclable and GREENGUARD GOLD Certified LEED v4 Credits and Certification. Declare Label. LBC Red List Free

## PHYSICAL PROPERTIES

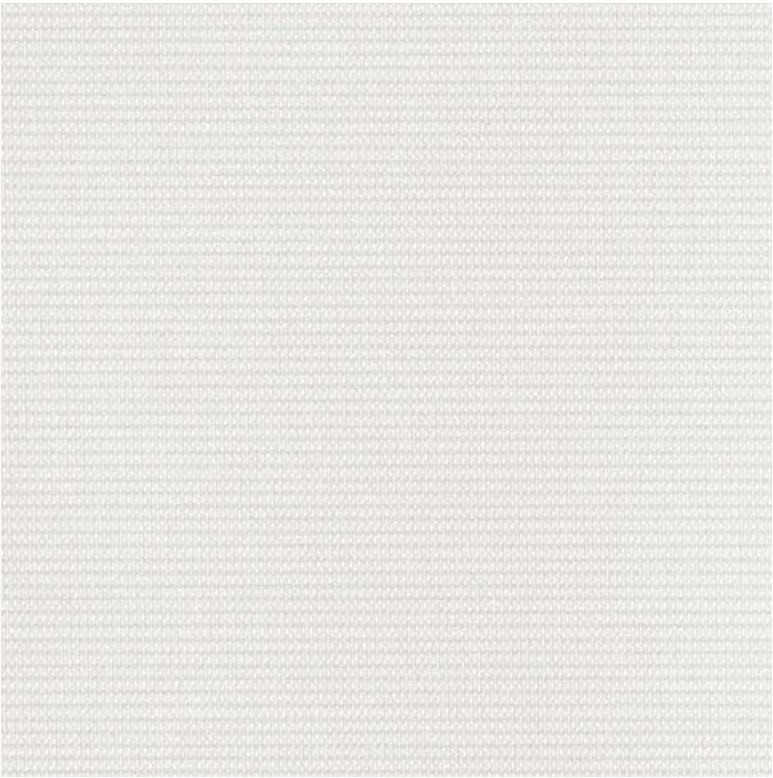
Content	100% Inherently Fire Resistant, Acoustic Sound Absorbing Polyester Fibers with Patented Snowsound Technology
Width	118” // 300 cm
Thickness	0.6 mm



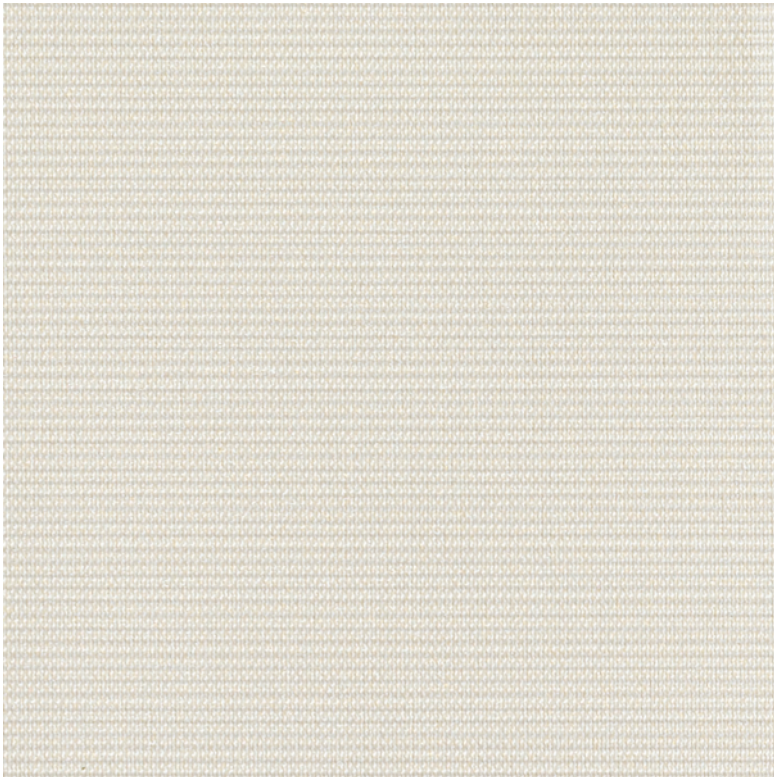
Roller shades



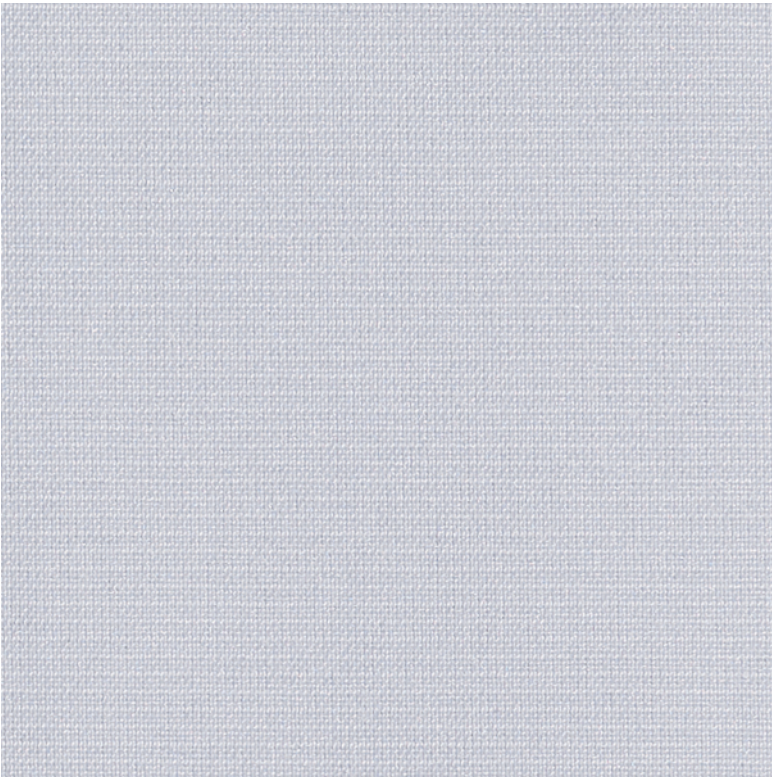
# FIBER 2/2R SWATCHES



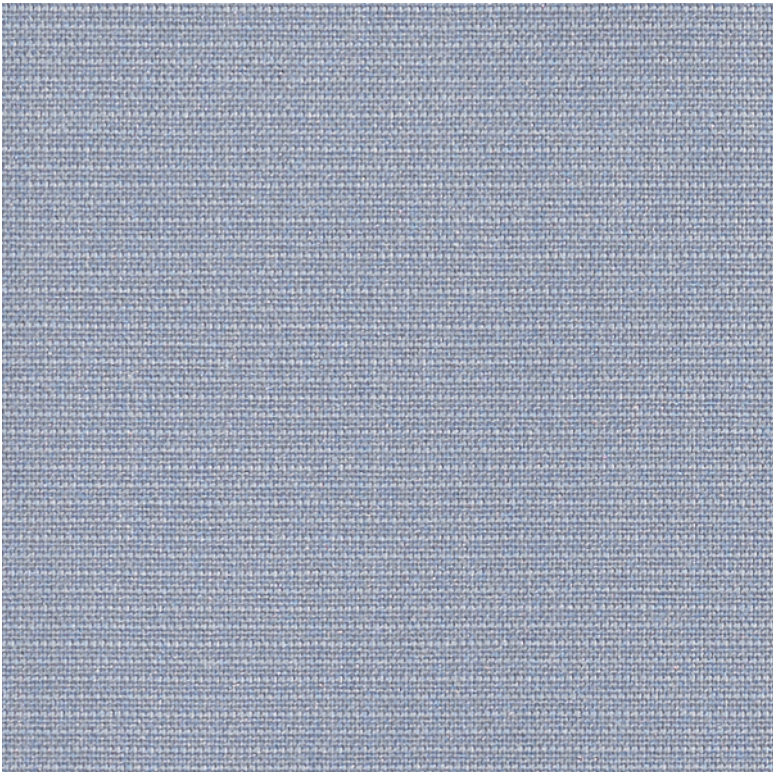
Natural White 200



Cream 201



Ice Gray 202



Medium Gray 203



# FIBER 3 MELANGE

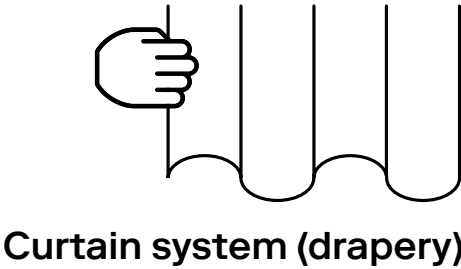
Acoustic “wool” finish woven fabric, created from a combination of yarns made up of light and dark fibers, then dyed in pieces to impart a tweed effect to the collection. The fabric does not have a precise direction, allowing for versatile shaping and cutting according to different shapes. Melange-Tweed is the fabric obtained with a weave created by a set of yarns of different colors, whose fibers have been mixed before spinning to achieve a melted, intertwined, and shaded effect. “Tweed” defines a particular wool fabric originating from Scotland, known for its softness and warmth.

## PERFORMANCE

Flame Resistance	Passes NFPA 701 – NFPA 260 – CAL. TB 117 – UL 723 & ASTM E 84 Class A
Environment	100% Recyclable and GREENGUARD GOLD Certified LEED v4 Credits and Certification. Declare Label. LBC Red List Free

## PHYSICAL PROPERTIES

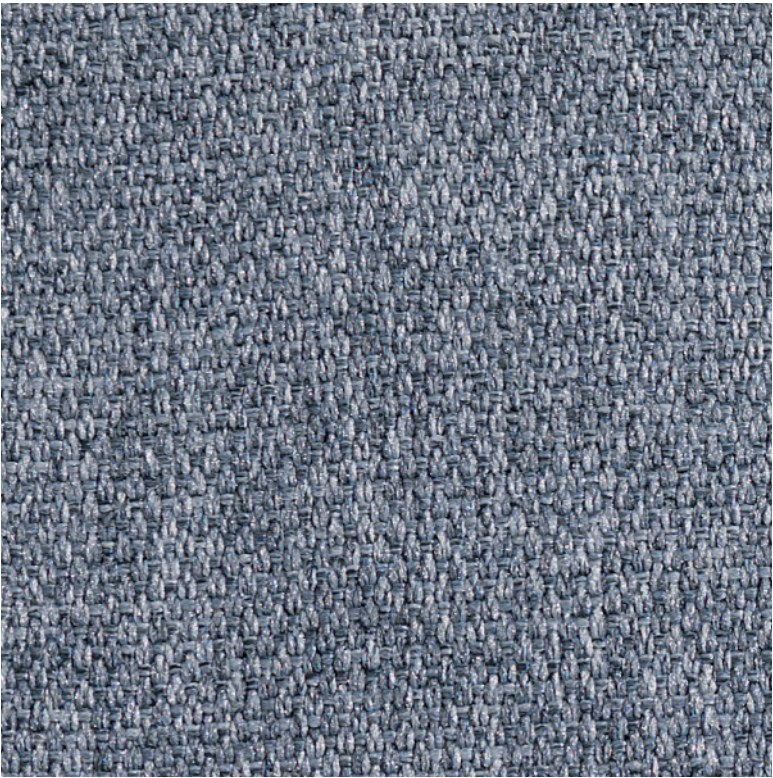
Content	100% Inherently Fire Resistant, Acoustic Sound Absorbing Polyester Fibers with Patented Snowsound Technology
Width	55" // 140 cm
Thickness	1 mm





# FIBER 3 MELANGE SWATCHES

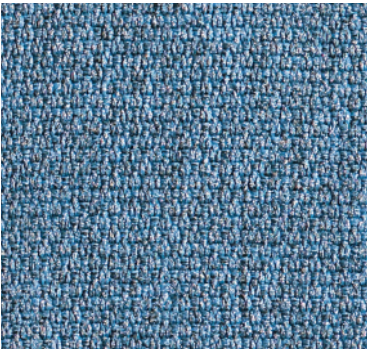
\*Check for availability



Gray Ice 300



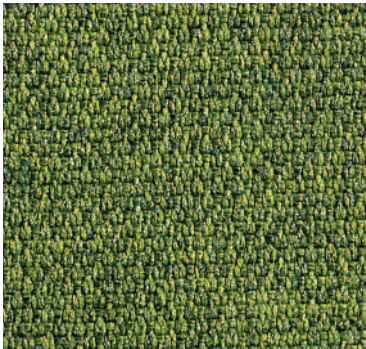
Gray Beige 304



Azure 305



Evergreen 313



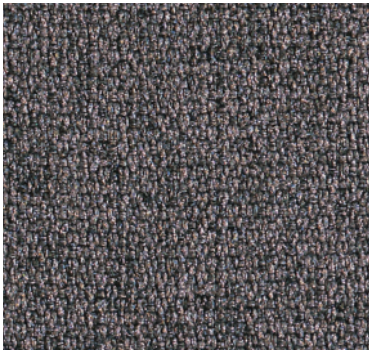
Gray Green 309



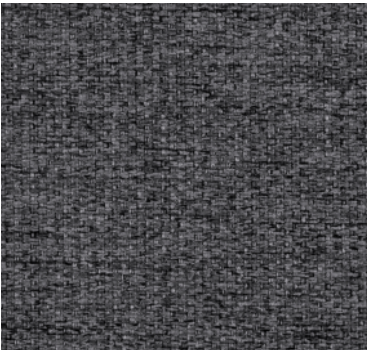
Fiji 315



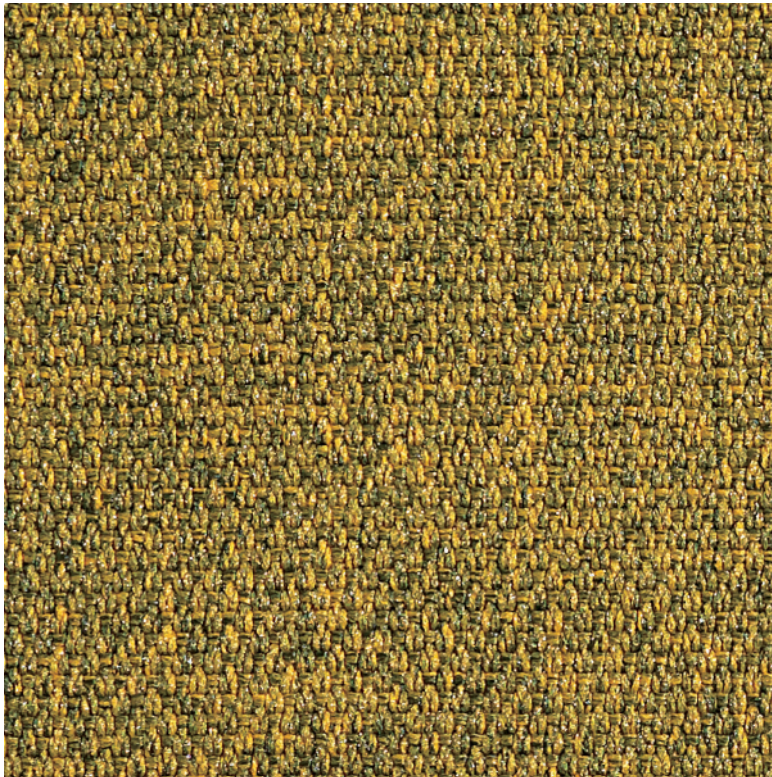
Admiral Blue 314



Gray Taupe 303



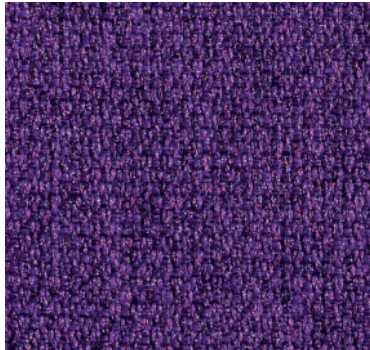
Carbon Gray 311



Gray Gold\* 310



Gray Blue 308



Gray Plum\* 307



Gray Burgundy\* 306



Ivory 316



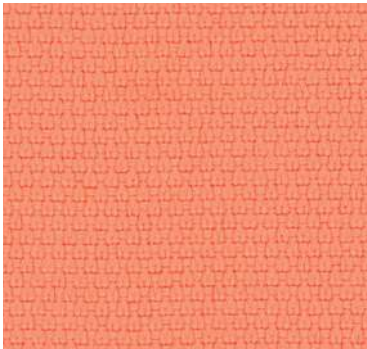
Anthracite 302



# FIBER 3 MELANGE SWATCHES



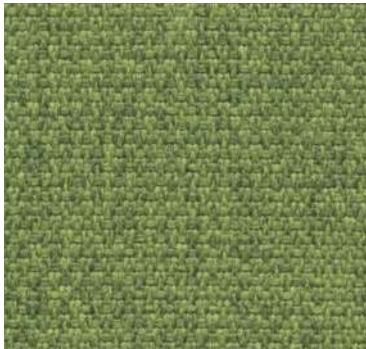
Sun Yellow 317



Peach 319



Mars 321



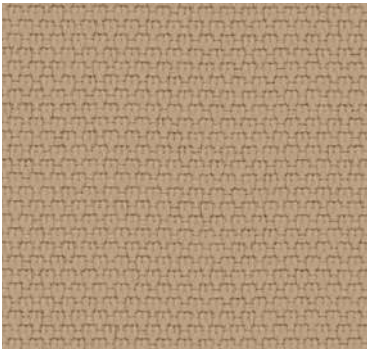
Olive Green 324



Light Blue 322



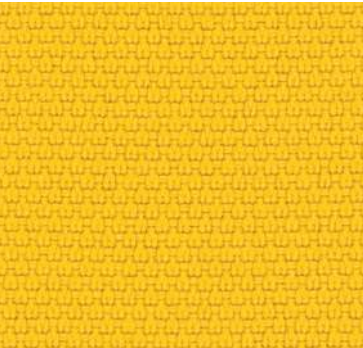
Mint Green 320



Beige 323



Sand 328



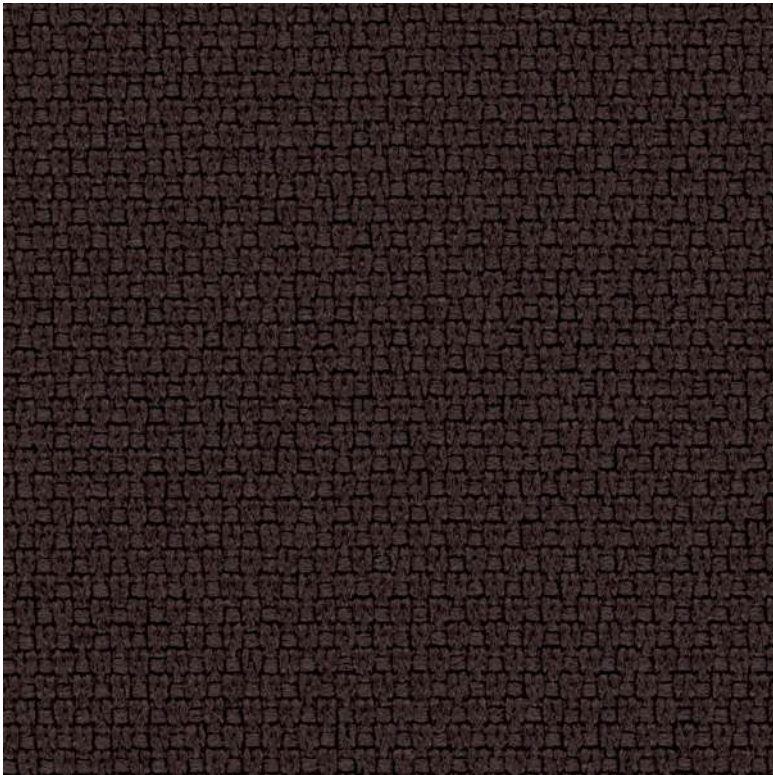
Manila 318



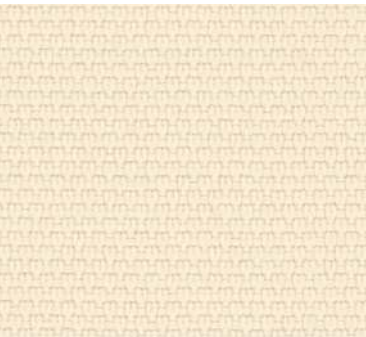
Carrot Orange 326



Red 325



Espresso 327



Linen 329



White 330



# FIBER 6 VELVET

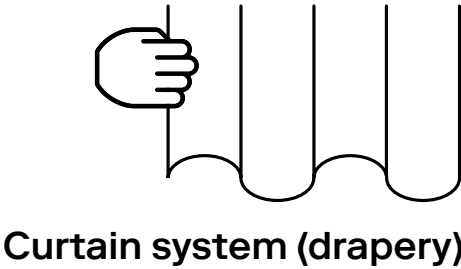
A soft and full-bodied acoustic “velvet” finish fabric with chenille yarns that generates a shimmering, non-homogeneous, bright texture with light-dark effects. Usually the laying foresees horizontal shimmering. Veluto-Ciniglia is a fabric that has a surface of dense pile perpendicular to the fabric, smooth, compact and brilliant. Ciniglia is a yarn composed of a twisted thread that holds between its yarn tufts of bulky, upright thread.. The effect is that of velvet (faux velvet), but softer.

## PERFORMANCE

Flame Resistance	Passes NFPA 701 – NFPA 260 – CAL. TB 117 – UL 723 & ASTM E 84 Class A
Environment	100% Recyclable and GREENGUARD GOLD Certified LEED v4 Credits and Certification. Declare Label. LBC Red List Free

## PHYSICAL PROPERTIES

Content	100% Inherently Fire Resistant, Acoustic Sound Absorbing Polyester Fibers with Patented Snowsound Technology
Width	118" //300cm
Thickness	1.7 mm





# FIBER 6 VELVET SWATCHES





# FIBER 7 VELO SHEER



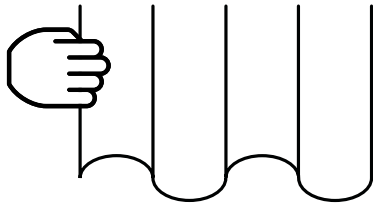
A lightweight and semi-transparent acoustic fabric, boasting a satin and shiny texture. It is characterized by a fine, solid-colored texture with subtle color effects. The ‘VELO’ (veil) effect seamlessly bridges the visual gap between outdoor and indoor spaces. The fabric features two distinct sides: one more opaque side facing inward and another shiny and reflective side facing the window. This innovative design enhances thermal comfort and promotes energy sustainability.

## PERFORMANCE

Flame Resistance	Passes NFPA 701 – NFPA 260 – CAL. TB 117 – UL 723 & ASTM E84 Class A
Environment	100% Recyclable and GREENGUARD GOLD Certified LEED v4 Credits and Certification. Declare Label. LBC Red List Free

## PHYSICAL PROPERTIES

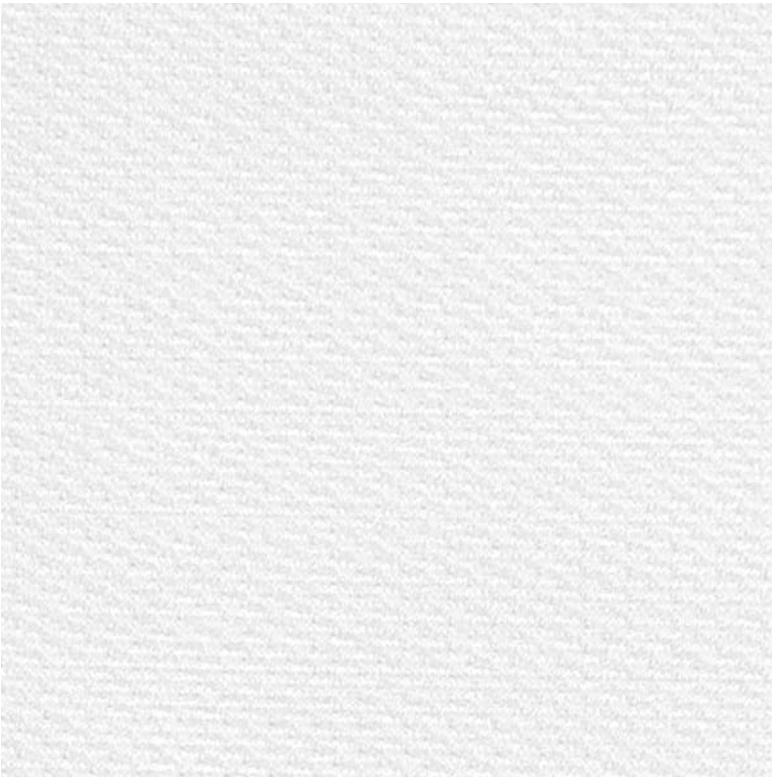
Content	100% Inherently Fire Resistant, Acoustic Sound Absorbing Polyester Fibers with Patented Snowsound Technology
Width	130" / 330 cm
Thickness	0.3mm



Curtain system (drapery)



# FIBER 7 VELO SHEER SWATCHES



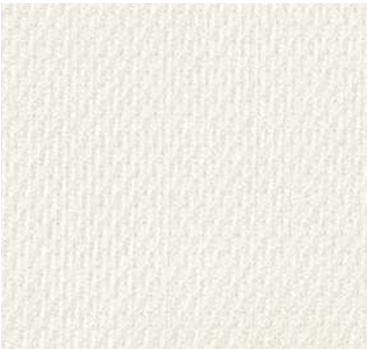
Ghost 700



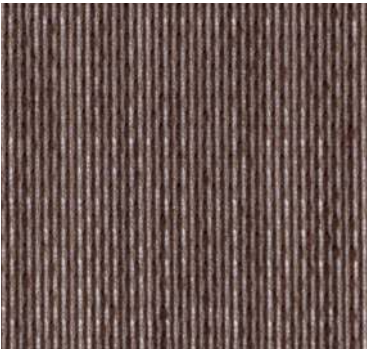
Tan 702



Taupe 701



Pearl 704



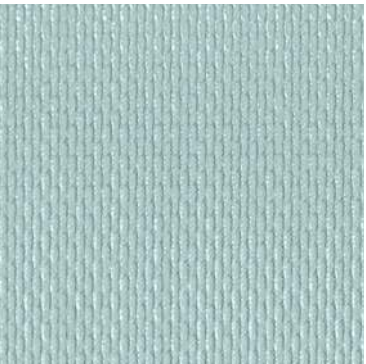
Walnut 705



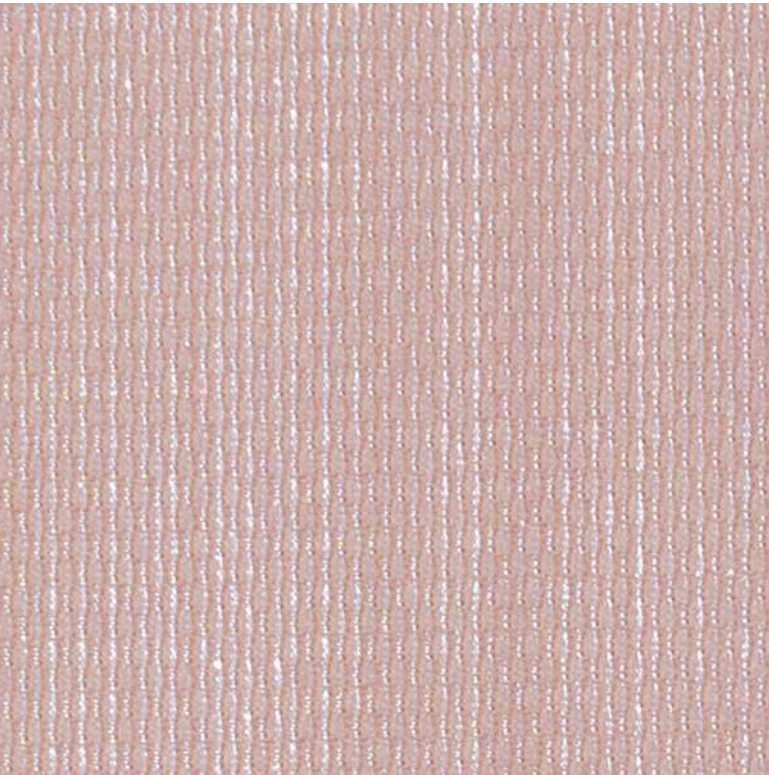
Steel 703



Sage 706



Lagoon 707



Blush 708



# FIBER 8 BOUCLÈ

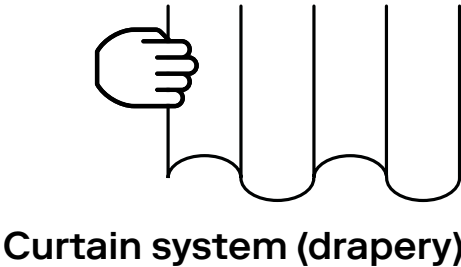
A double-sided acoustic fabric with two different textures and two different coats: a soft and rich side characterized by the typical “curls” of the bouclè that generate shiny/matte effects, and then you have a more technical, shaved, and less designed side. Fiber 8 is a Jacquard fabric. Bouclè is the fabric obtained from a fancy yarn characterized by knots and small eyelets that generate an irregular fabric surface.

### PERFORMANCE

Flame Resistance	Passes NFPA 701 – NFPA 260 – CAL. TB 117 – UL 723 & ASTM E 84 Class A
Environment	100% Recyclable and GREENGUARD GOLD Certified LEED v4 Credits and Certification. Declare Label. LBC Red List Free

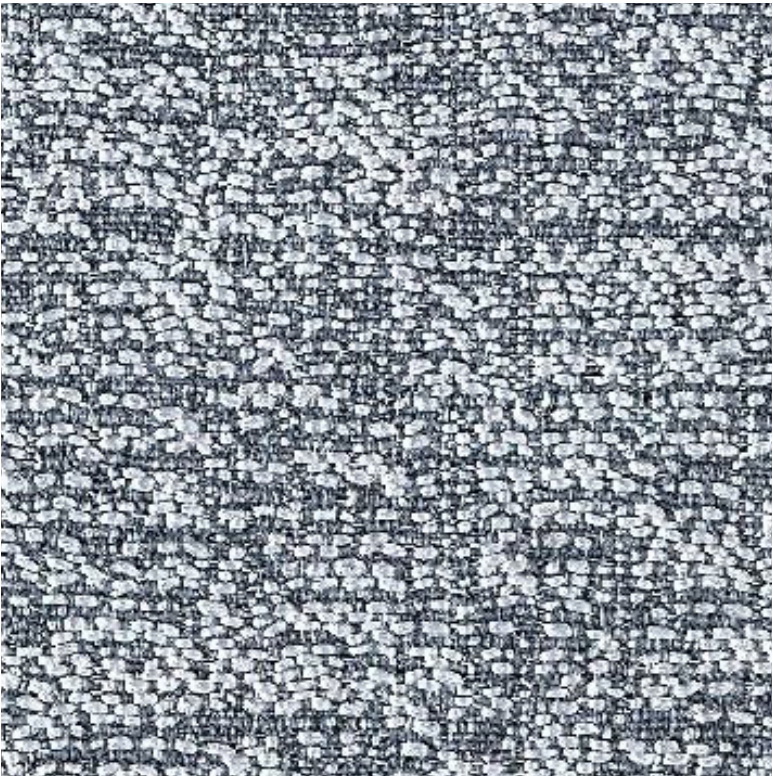
### PHYSICAL PROPERTIES

Content	100% Inherently Fire Resistant, Acoustic Sound Absorbing Polyester Fibers with Patented Snowsound Technology
Width	57" // 145 cm
Thickness	1.6 mm

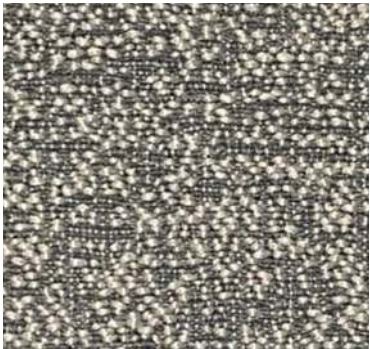




# FIBER 8 BOUCLÉ SWATCHES



Gray Ice 801



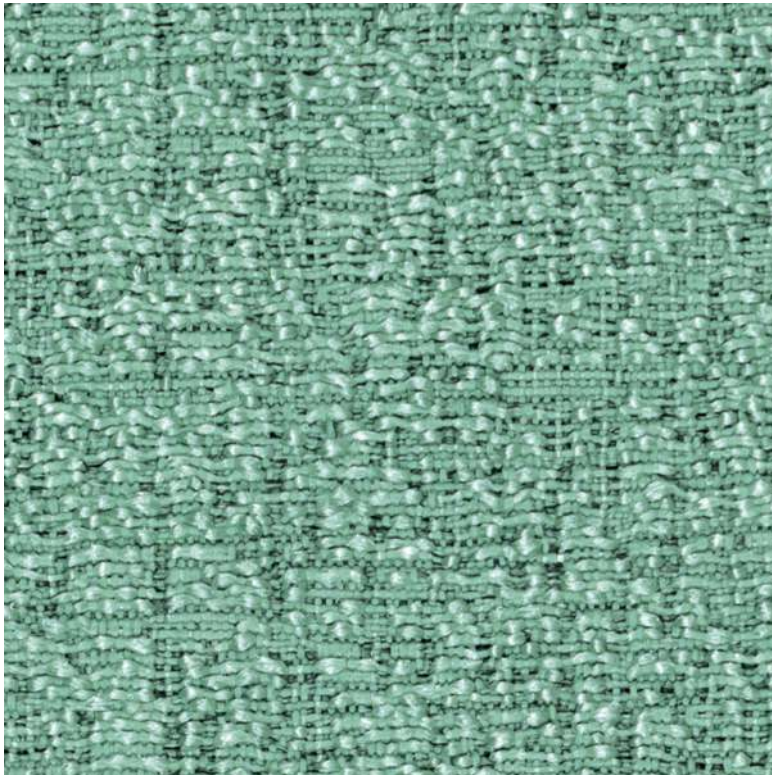
Gray Beige 802



Graphite 803



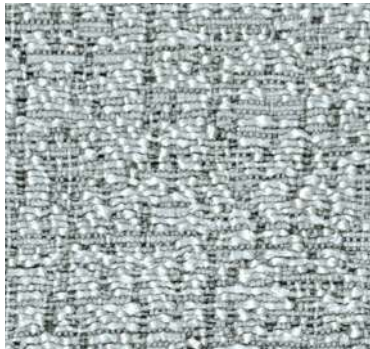
816



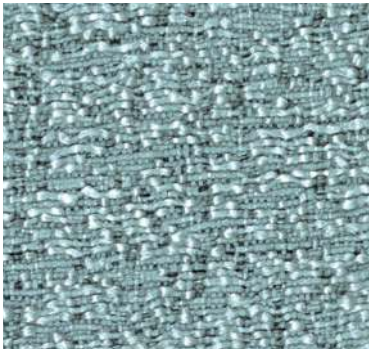
Mint 815



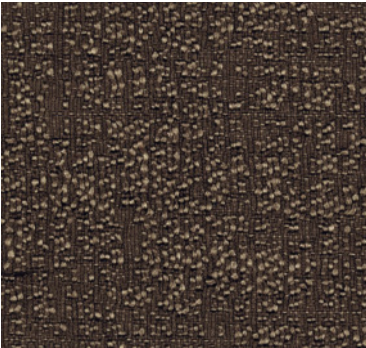
Frost 810



Rhino 811



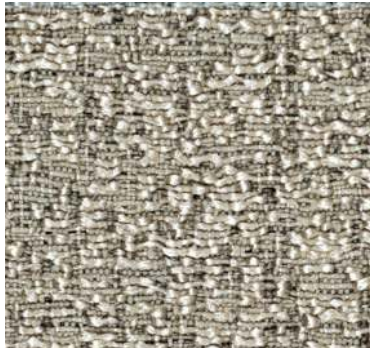
Arctic 814



Dove Coffee 800



Obsidian 807



Yosemite 813



Sahara 812

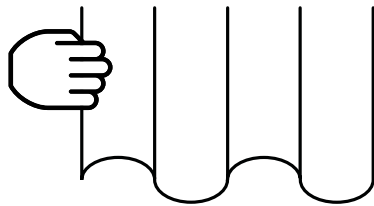


# FIBER 14 BIOSPHERE

Biosphere is a sound-absorbing fabric born from the fusion of technology and nature. Its acoustic performance is the result of rigorous research, and its nature-inspired appearance is characterized by a range of colors that reflect the plurality and diversity of life on Earth. The materiality of Biosphere appeals to several senses at once. Sight and touch are simultaneously engaged by the balanced color scheme and the complex textures of the fabric, while the special acoustic functions of the while the special acoustic functions of the product are achieved thanks to the integrated Snowsound-Fiber Textile technology.

## PERFORMANCE

Flame Resistance	Passes NFPA 701 – NFPA 260 – CAL. TB 117 – UL 723 & ASTM E 84 Class A
Environment	100% Recyclable and GREENGUARD GOLD Certified LEED v4 Credits and Certification. Declare Label. LBC Red List Free



Curtain system (drapery)

## PHYSICAL PROPERTIES

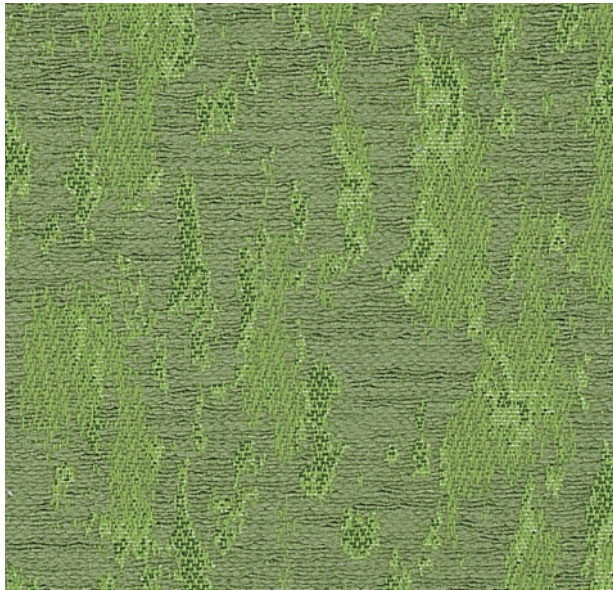
Content	100% Inherently Fire Resistant, Acoustic Sound Absorbing Polyester Fibers with Patented Snowsound Technology
Width	55" // 140 cm
Thickness	1.5 mm





# FIBER 14

## BIOSPHERE SWATCHES



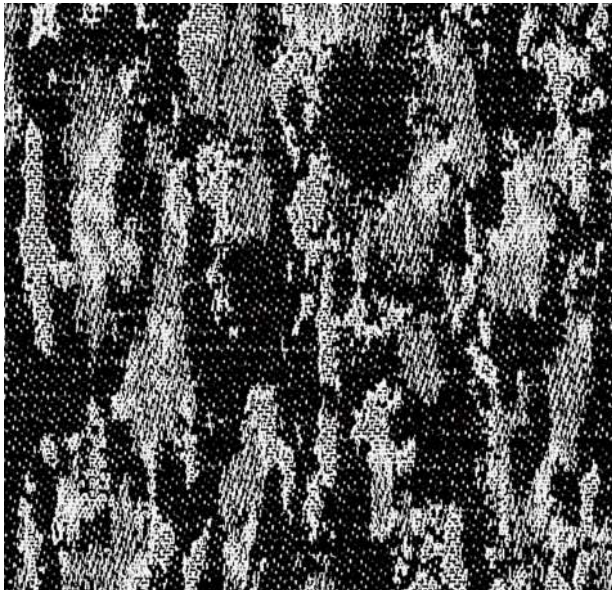
Forest 1400



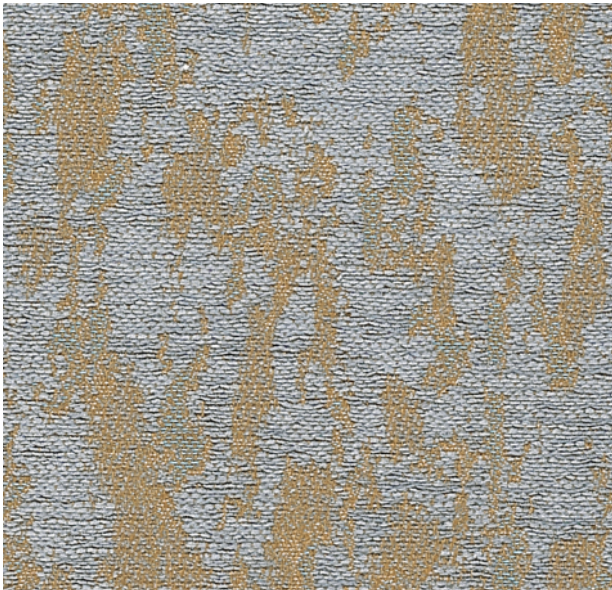
Stone 1401



Clouds 1402



Volcano 1404



Tundra 1405



# FIBER 16 THERMO

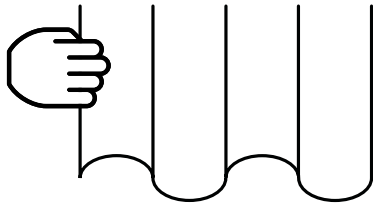
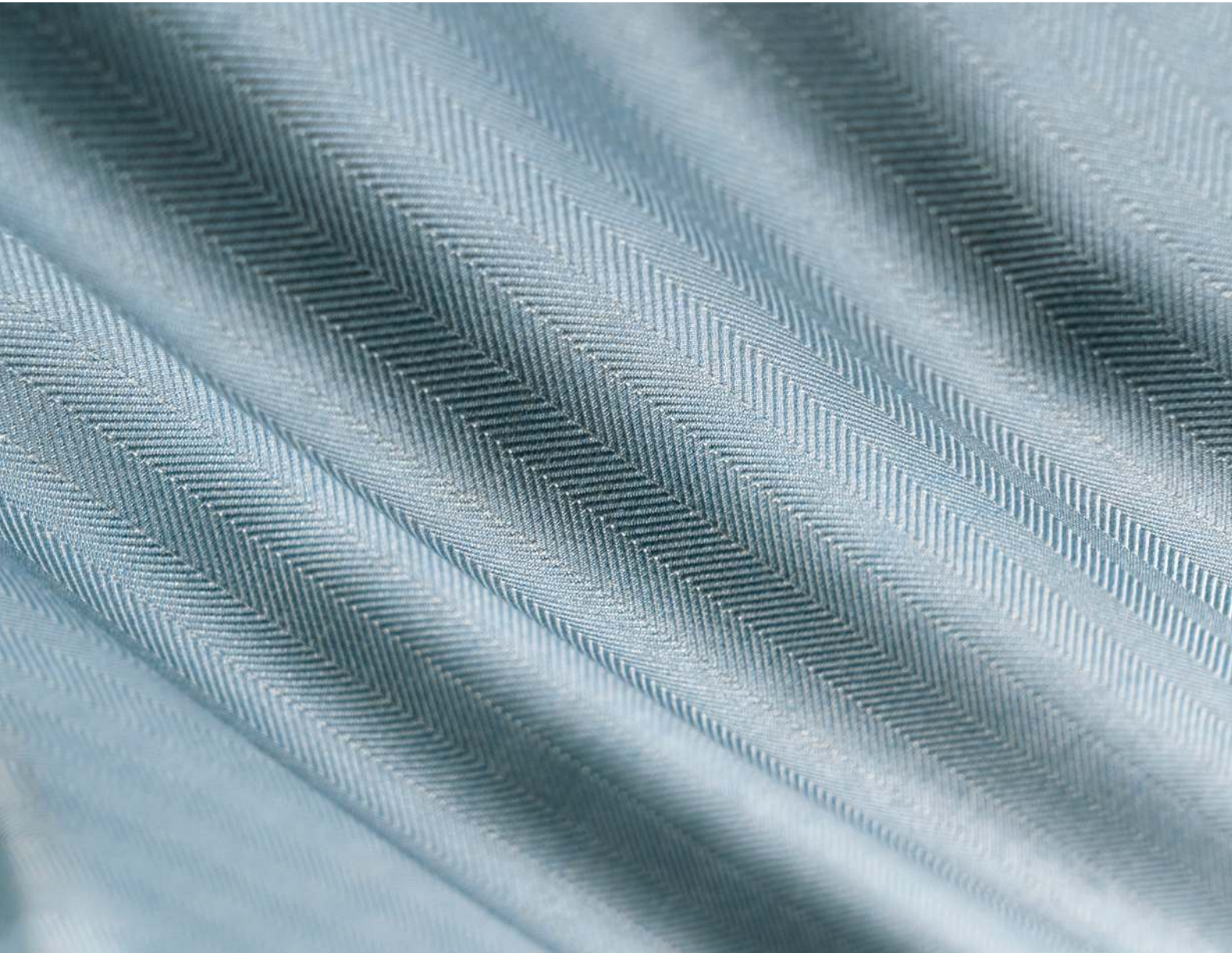
Thermo is a sound-absorbing fabric that helps to keep rooms at the right level of thermal comfort. In summertime, the reflective side facing the sun prevents thermal energy from entering. In wintertime, the side facing inwards limits thermal loss while the reflecting side helps trap the heat inside. A piece of interior design that also saves energy.

## PERFORMANCE

Flame Resistance	Passes NFPA 701 – NFPA 260 – CAL. TB 117 – UL 723 & ASTM E 84 Class A
Environment	100% Recyclable and GREENGUARD GOLD Certified LEED v4 Credits and Certification. Declare Label. LBC Red List Free

## PHYSICAL PROPERTIES

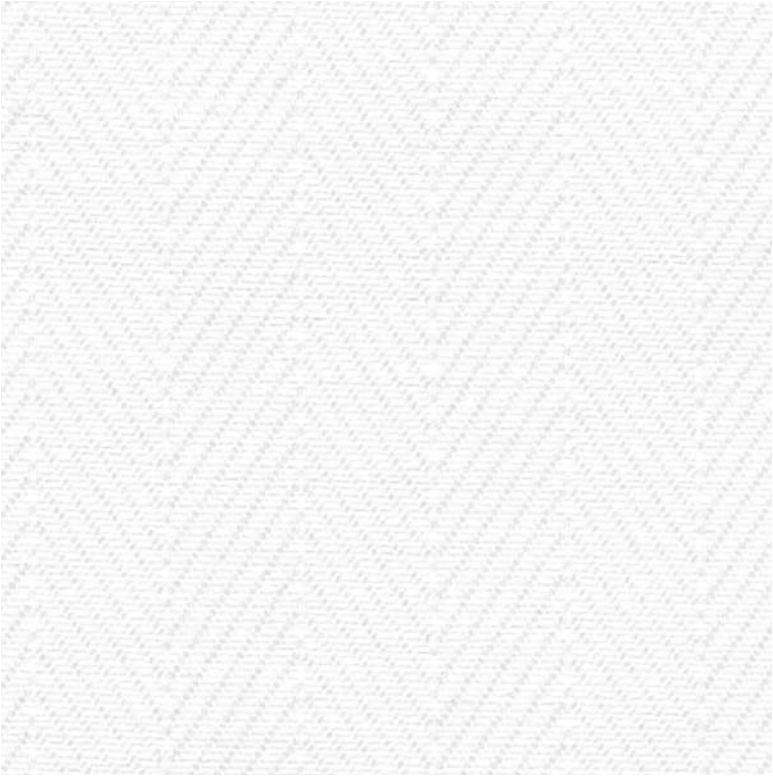
Content	100% Inherently Fire Resistant, Acoustic Sound Absorbing Polyester Fibers with Patented Snowsound Technology
Width	55" // 140 cm
Thickness	0.4mm



Curtain system (drapery)



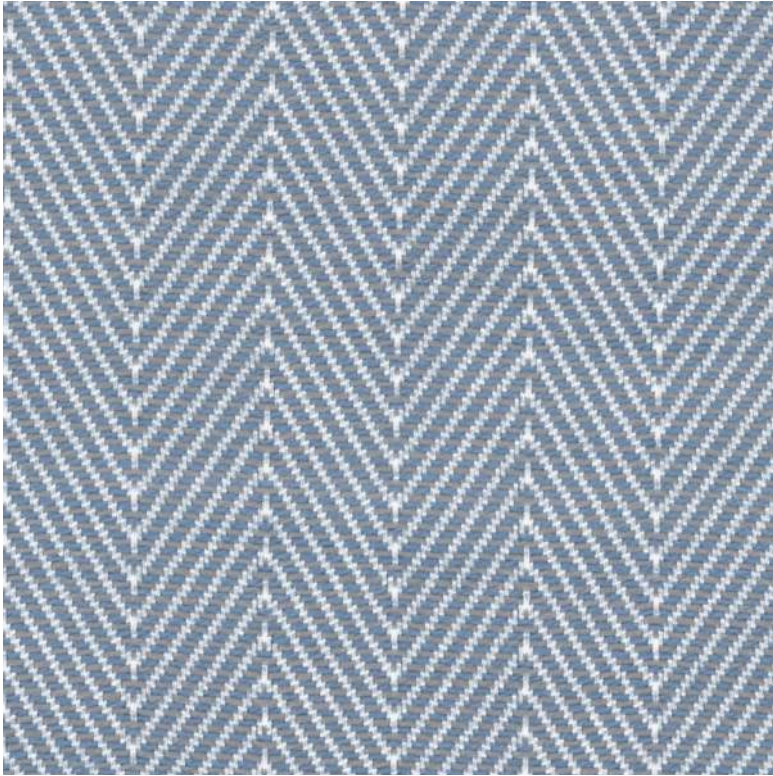
# FIBER 16 THERMO SWATCHES



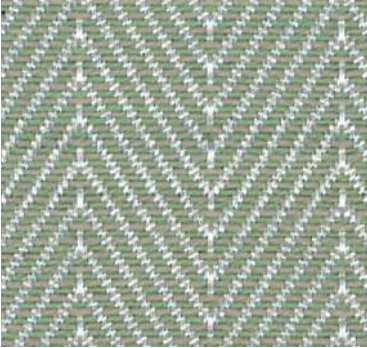
White 1600



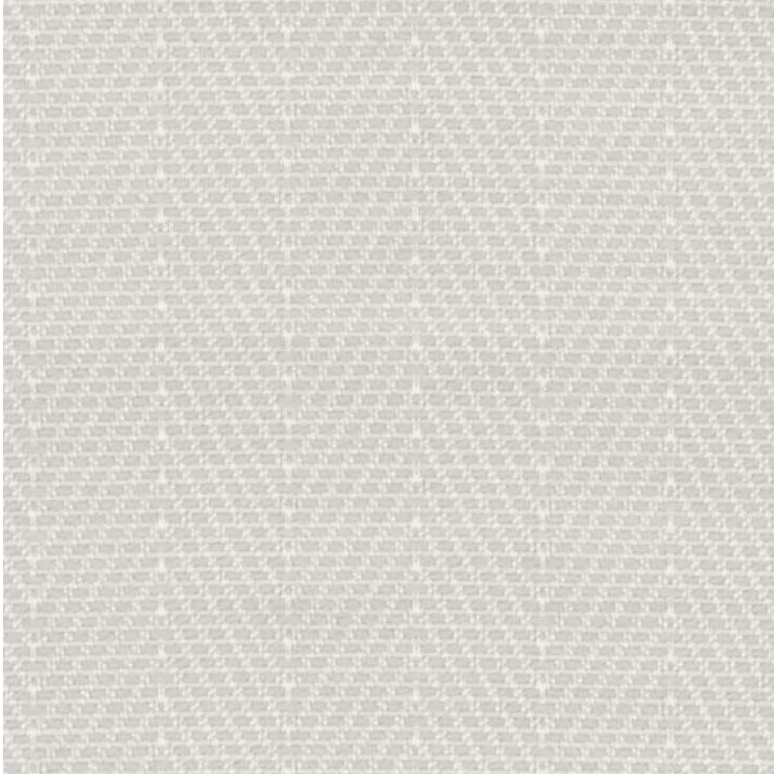
Gray 1603



Steel Blue 1604



Artichoke 1605



Abalone 1602



Pearl 1601



# SNOWSOUND

## SNOWSOUND USA HQ

Snowsound USA

10018 Santa Fe Springs Road

Santa Fe Springs, CA 90670

Tel. 562.903.9550

[info@snowsoundusa.com](mailto:info@snowsoundusa.com)

[www.snowsoundusa.com](http://www.snowsoundusa.com)



**Declare.**

## LOS ANGELES SHOWROOM

Pacific Design Center

Green Building, Suite G-152

8687 Melrose Ave

West Hollywood, CA 90069

## CHICAGO SHOWROOM

222 Merchandise Mart Plaza

Floor 11, Suite 1197

Chicago, IL 60654 USA

## NEW YORK SHOWROOM

New York Design Center (NYDC)

200 Lexington Ave

Floor 11, Suite 1106

New York, NY 10016 USA

©2025 Snowsound USA. All rights reserved.

Follow us: @snowsoundusa

