

# SNOWSOUND

## FLAP LED

Below are general guidelines to install the Snowsound FLAP LED system; local professional electricians must make final best determination for install.

**\*\* Be sure to check with your local municipalities for electrical code requirements.**

The round "Hub" houses the LED Driver that connects to existing electrical power.

### POWER

This LED unit is designed to be hard-wired (the kit is designed for a power source to connect directly to the Driver). Note each Snowsound FLAP LED light module has a transformer. A hard wire power source (120V) is required for each Snowsound FLAP LED module.

### KIT INCLUDES

Light kit with LED driver & the power receiver box. The electrician should be making the final connection and supplying the power source wires. Cord Length: 5'-0"

Reference images on next page:



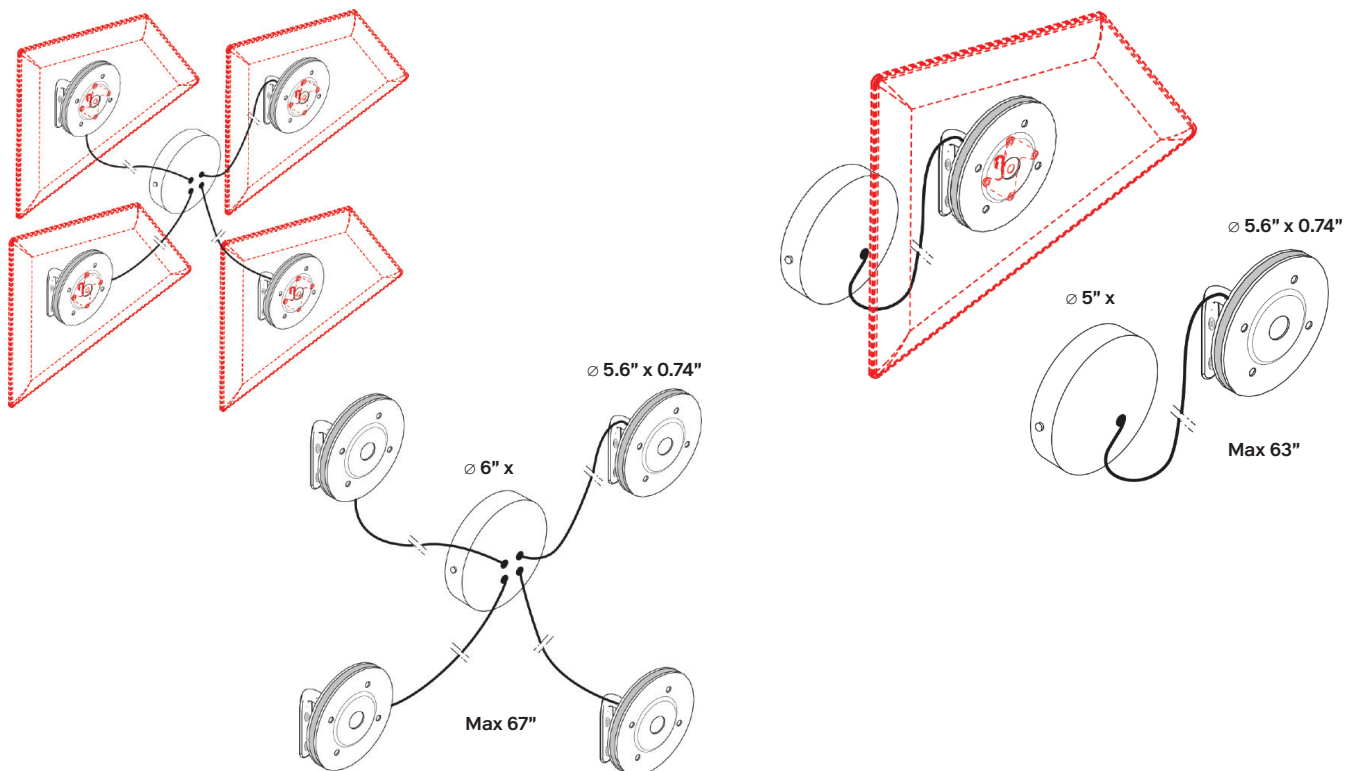
# Technical Specs

## FLAP LED – 4 LIGHT PACK

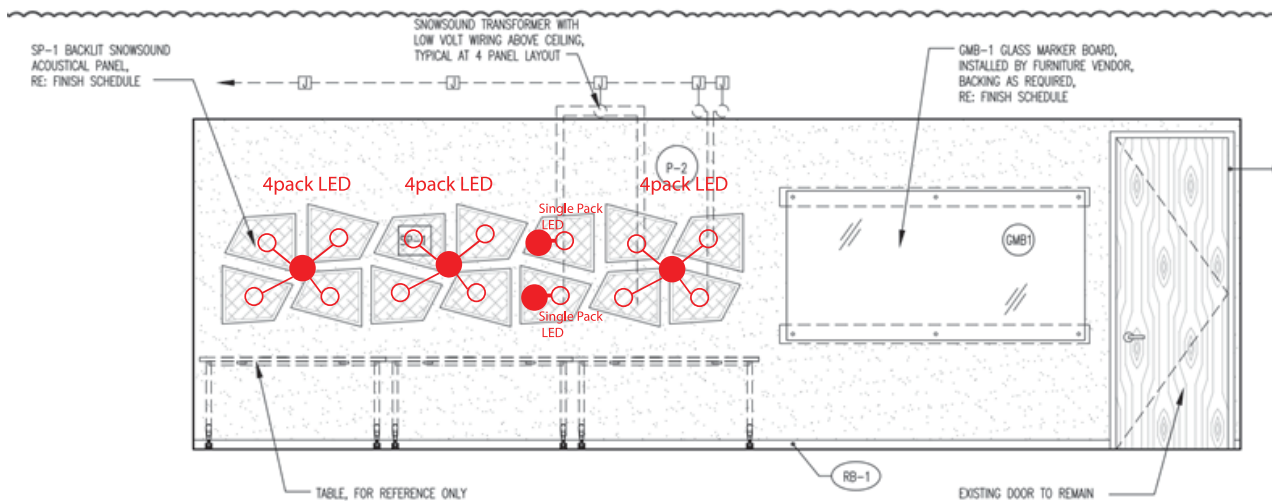
Part No.	40025092
QTY	1
Specs	LED 24V.5.6W AWM 2464#, 20AWG, 80°C, 300V x 6.5'
Input	AC 100-240V, 50/60Hz, 230mA
Output	DC 24V, 0.42A
Chip Brand	AAA
Lumens	550
CCT	3000K

## FLAP LED – SINGLE LIGHT

Part No.	40025093
QTY	1
Specs	LED 24V.5.6W AWM 2464#, 20AWG, 80°C, 300V x 6.5'
Input	AC 100-240V, 50/60Hz, 230mA
Output	DC 24V, 0.42A
Chip Brand	AAA
Lumens	550
CCT	3000K



Actual project diagram using Flap LED Light (finished installation on last page)

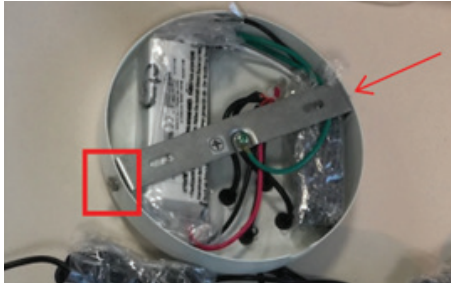


# Install Instructions

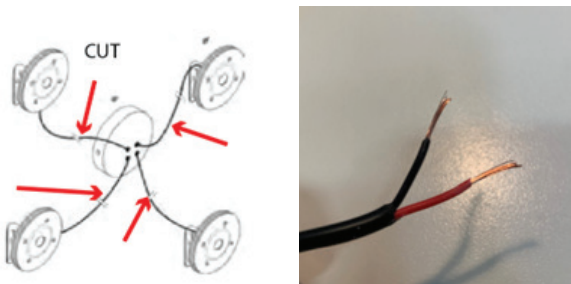
**FOR ELECTRICAL WIRES NOT VISIBLE ON EXTERIOR OF WALL/CEILING  
(so wires are concealed behind the wall)**

01. Disassemble circular cover from other electrical components by following the steps below:

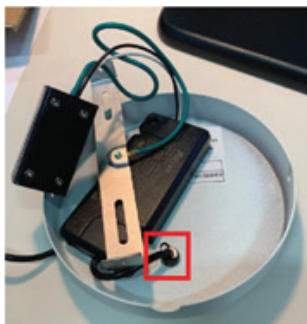
- Remove the wall mounting bracket by removing two screws located on the outer rim of the metal circular cover.



02. Depending on the length needed to run FLAP LED power wires behind the wall, cut wires at the appropriate length (approx. 7" from housing); strip plastic to expose copper wire ends.



03. Remove plastic stopper and then pull wire out by following these steps:



- Rotate plastic stopper 90 degrees and push gently but firmly from back towards front face of circular cover using flat head screwdriver. Plastic stopper should push through oblong shaped hole in circular housing.

– Once plastic stopper is pushed through, remove and discard plastic stopper. Circular housing will now be free from wires as shown:

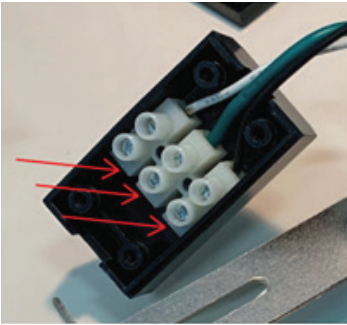


– Single FLAP LED version shown above. Same applies with 4-FLAP LED unit.

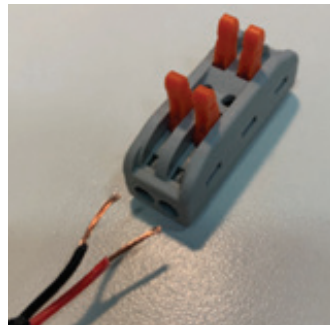
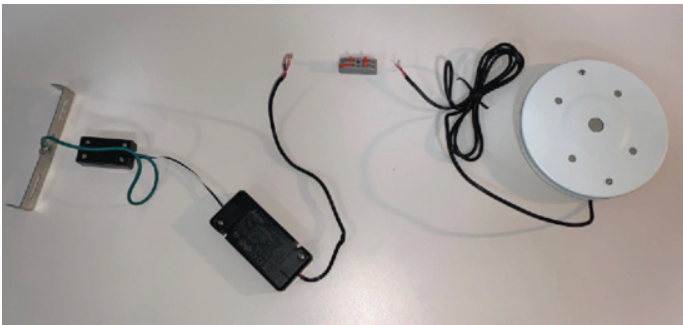
04. Locate small Black Box and remove cover by unscrewing the four screws located on each corner of the Black Box.



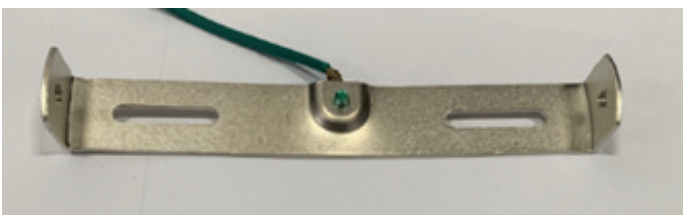
05. Connect power source by inserting wires into power box, then close cover using four screws.



06. Run wires from LED Circular light behind wall and run to corresponding wire that was previously cut. Using included wire connector, connect wires appropriately.



07. Fasten wall mounting bracket (shown below) onto wall over junction box.



08. Push all wires into junction box and place circular cover over junction box onto wall bracket and fasten with two screws, included with your Flap LED unit. Example image of prepared wall for Flap LED install below.



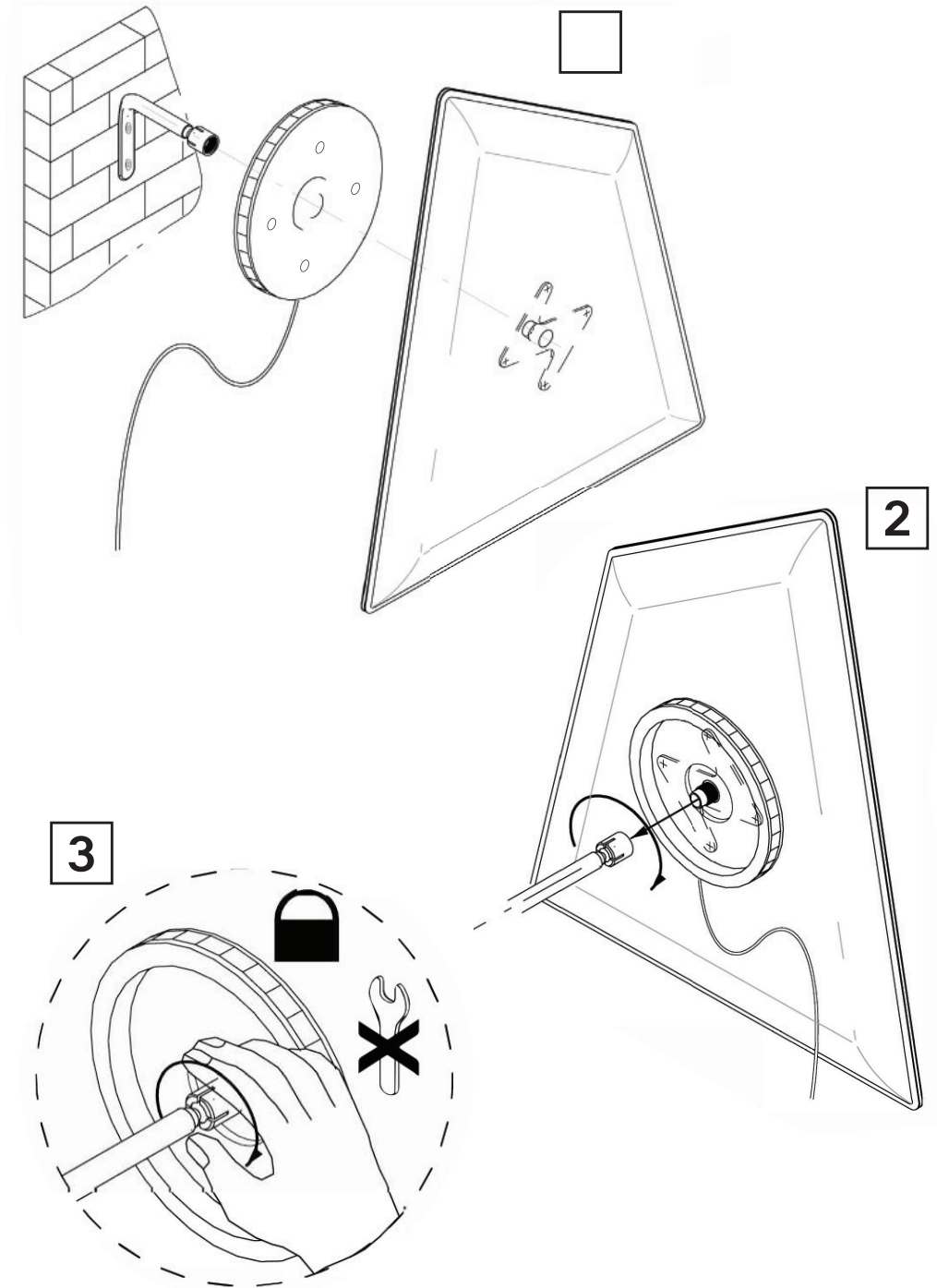
# LED Light Assembly To Panel

## FLAP LED – 4 LIGHT PACK

Part No. 40025092

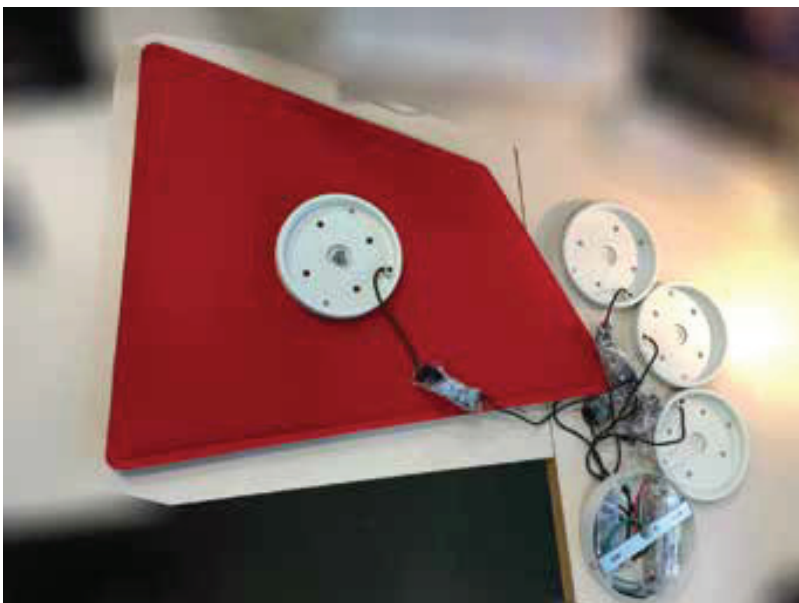
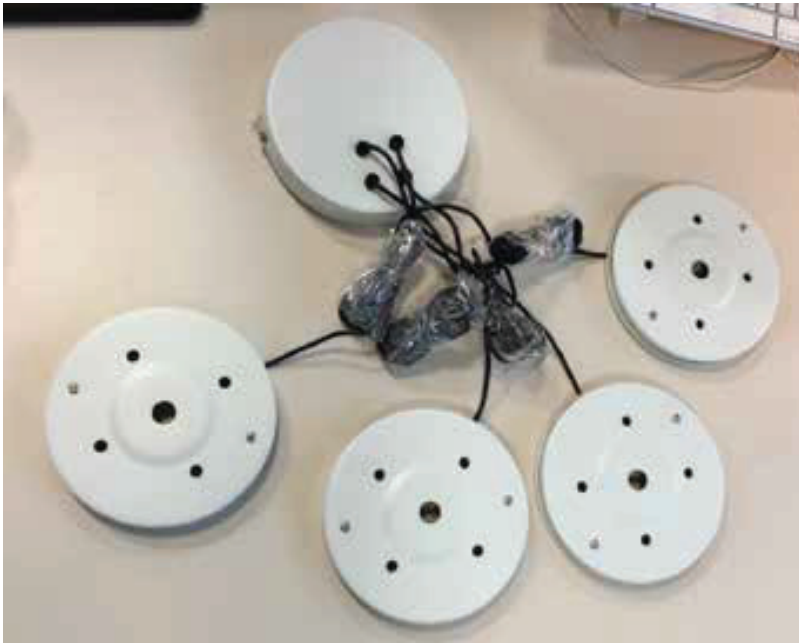
## FLAP LED – SINGLE LIGHT

Part No. 40025093



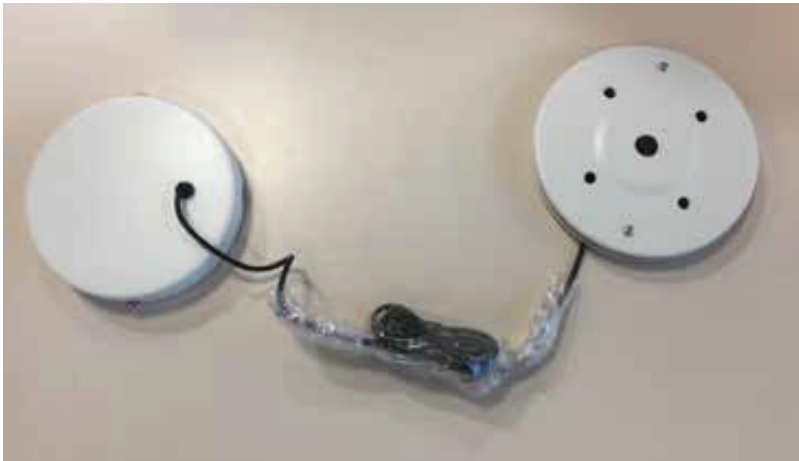
# Product Images

## FLAP LED – 4 LIGHT PACK

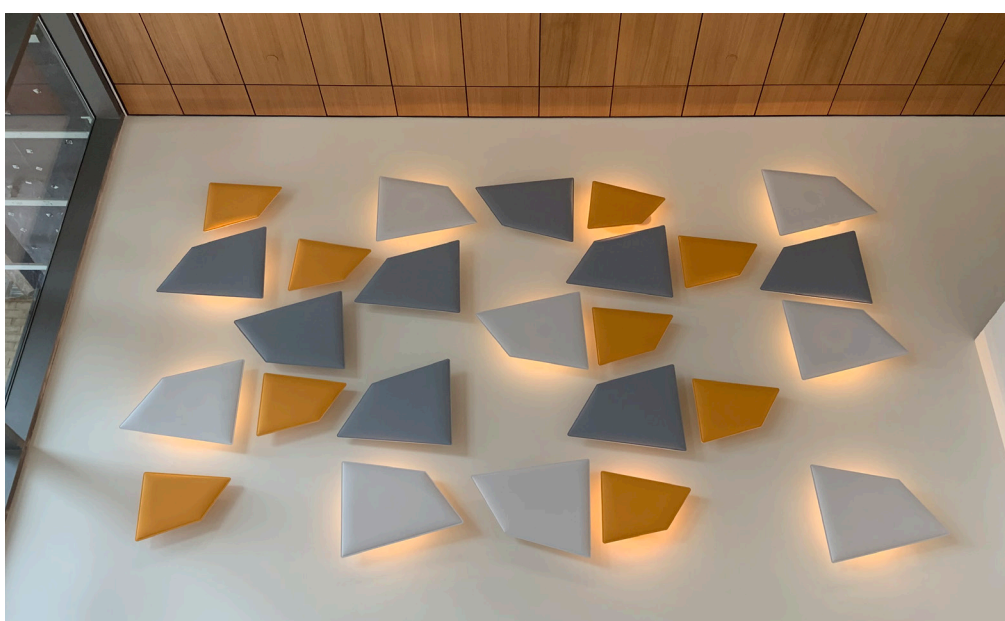
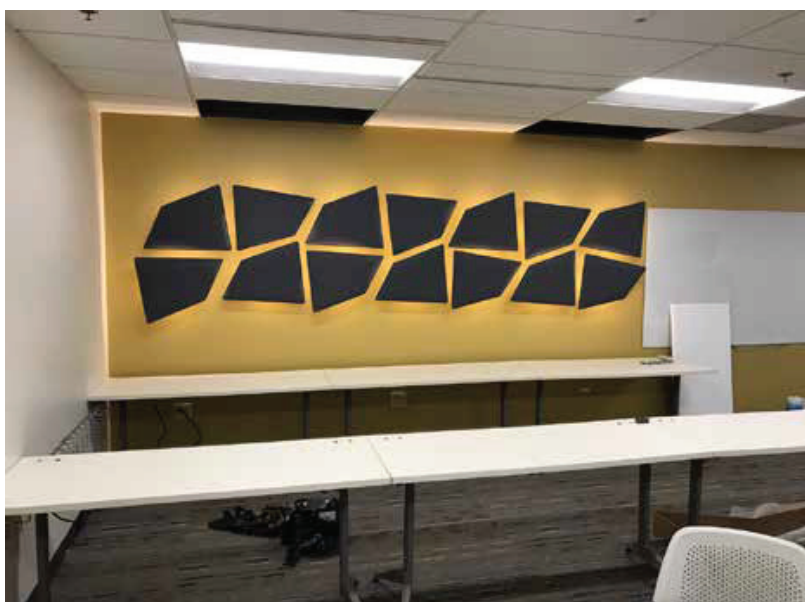
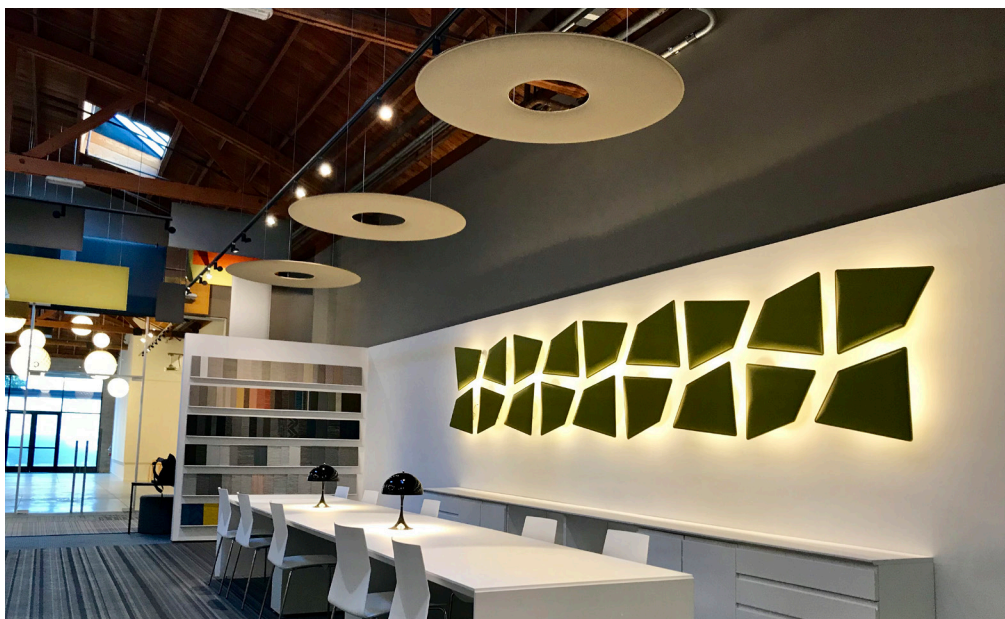


# Product Images

## FLAP LED – SINGLE LIGHT



# Reference Installation Images





# SNOWSOUND

## SNOWSOUND USA HQ

Snowsound USA

10018 Santa Fe Springs Road

Santa Fe Springs, CA 90670

Tel. 562.903.9550

[info@snowsoundusa.com](mailto:info@snowsoundusa.com)

[www.snowsoundusa.com](http://www.snowsoundusa.com)



**Declare.**

Scan for more products



Hear the difference



**LOS ANGELES SHOWROOM**  
Pacific Design Center  
Green Building, Suite G-152  
8687 Melrose Ave  
West Hollywood, CA 90069

**CHICAGO SHOWROOM**  
222 Merchandise Mart Plaza  
Floor 11, Suite 1197  
Chicago, IL 60654 USA

**NEW YORK SHOWROOM**  
New York Design Center (NYDC)  
200 Lexington Ave  
Floor 11, Suite 1106  
New York, NY 10016 USA