

FIBER 12 ECONYL



FIBER 12 ECONYL

PHYSICAL PROPERTIES

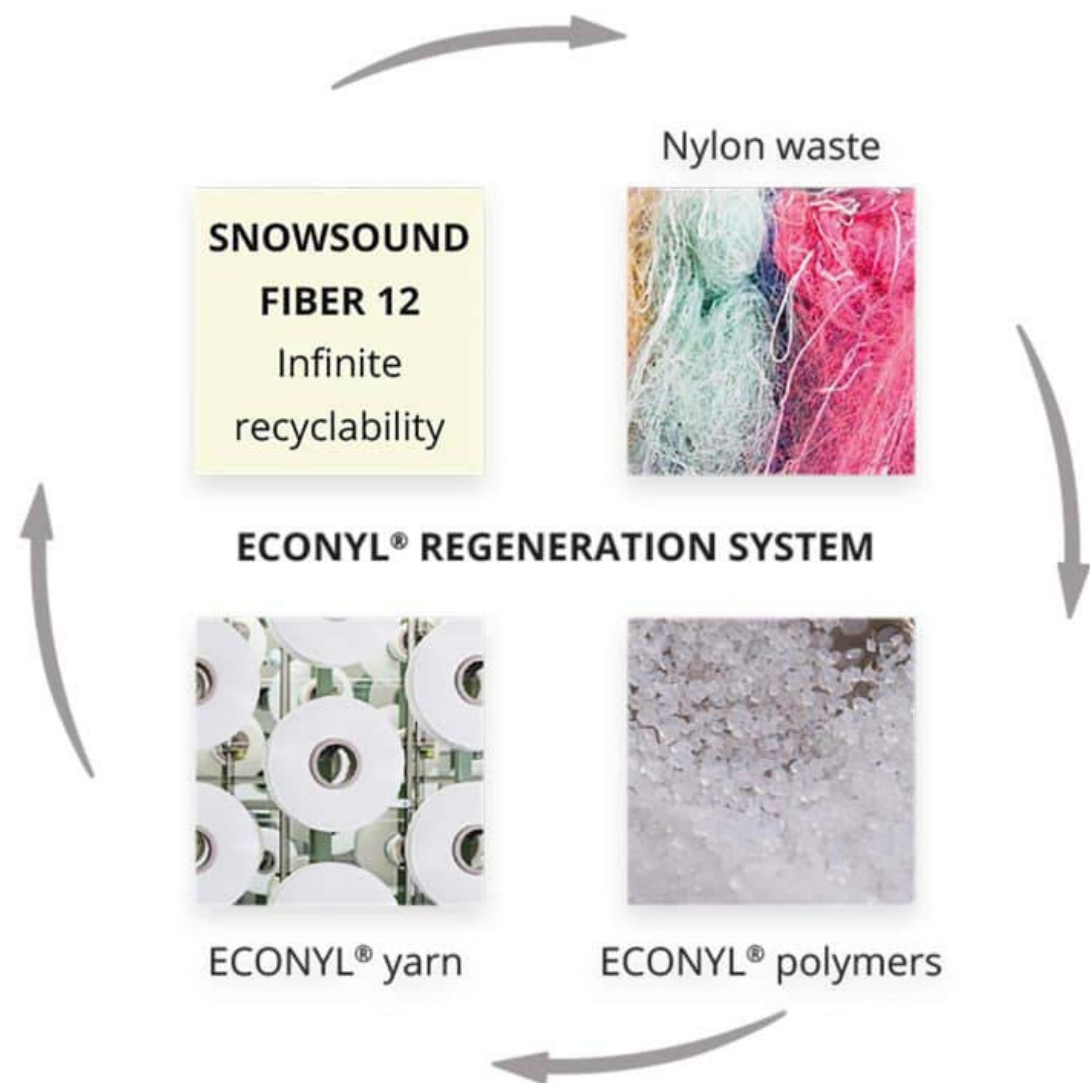
Content	100% Fire Resistant, Acoustic Sound Absorbing Regenerated Nylon with Patented Snowsound Technology
Backing	Unbacked
Width	55" / 140 cm (tolerance + 0 – 3 cm)
Weight	9.7 oz per square yard / 14.8 oz per linear yard
Thickness	1.6 mm

ACOUSTIC PERFORMANCE & NOISE REDUCTION RATING

Absorption Coefficient & NRC	Please refer to the online Technical Sheets for acoustical testing details
------------------------------	--

PERFORMANCE

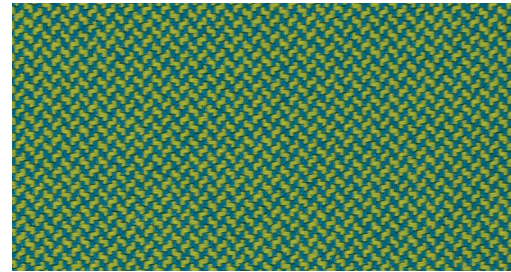
Flame Resistance	Passes NFPA 701 // NFPA 260 // CAL. TB 117 // UL 723 Class A // ASTM E 84 Class A
Environment	100% Infinitely Recyclable and GREENGUARD GOLD Certified
Abrasion Resistance	750,000 rubs /cycles (tested according to Martindale Method)
Colorfastness to Light	Grade 6/7 – “Excellent” (Passes AATCC 16 / ISO 105–B02:2014)
Colorfastness to Wet and Dry Crocking	Wet & Dry – Grade 4/5 (Passes AATCC 8 / ISO 105–X12: 2016)
Propensity to Surface Fuzzing and Pilling	Grade 5 – “no change” (Passes ISO 12945–2:2021)
Washing & Maintenance	Normal machine washing up to 86 degrees Fahrenheit. Ironing on low heat acceptable. Dry cleaning is acceptable (any solvent except Trichloroethylene). Do not tumble dry.



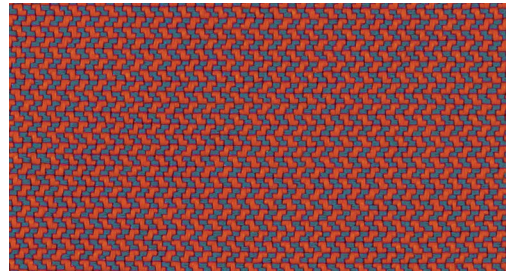
FIBER 12 ECONYL SWATCHES

SPECS

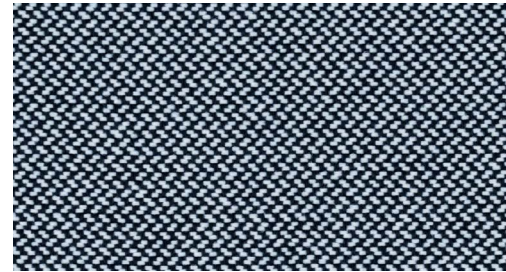
Rolls	27.3yd/25m	8.7yd/8m
-------	------------	----------



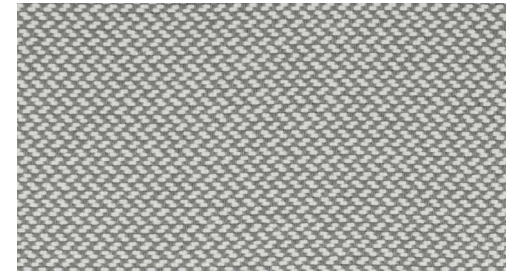
Viper
 27.3 yd 7F12-25-1200
 8.7 yd 7F12-6-1200



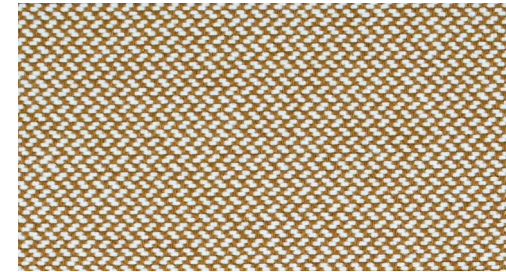
Berry
 27.3 yd 7F12-25-1201
 8.7 yd 7F12-6-1201



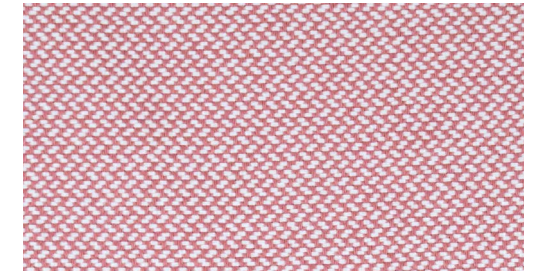
Chess
 27.3 yd 7F12-25-1202
 8.7 yd 7F12-6-1202



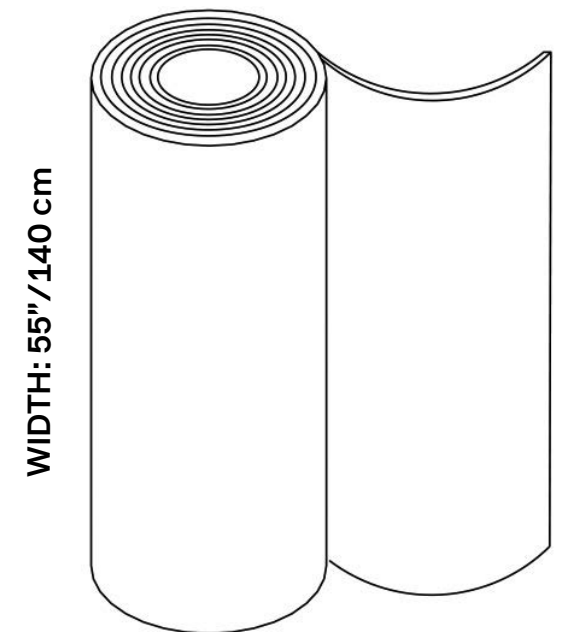
Igloo
 27.3 yd 7F12-25-1203
 8.7 yd 7F12-6-1203



Camel
 27.3 yd 7F12-25-1204
 8.7 yd 7F12-6-1204



Ribbon
 27.3 yd 7F12-25-1205
 8.7 yd 7F12-6-1205

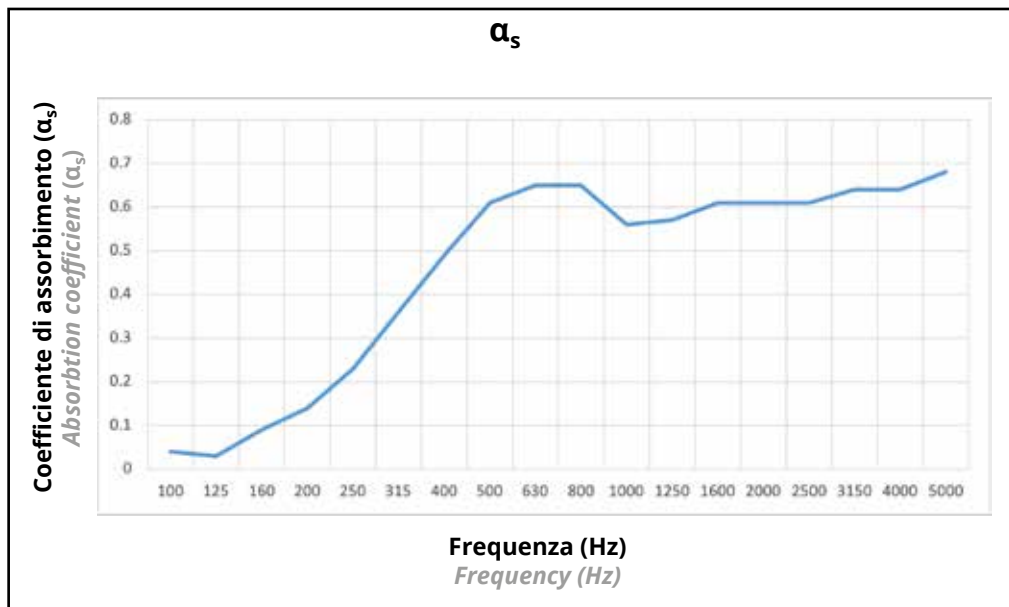
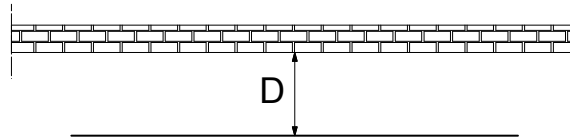


Roll sizes by-the-yard between 8.7 yards and 27.3 yards are available on request with extended lead time and cutting fee. Please contact your local representative for information and pricing.

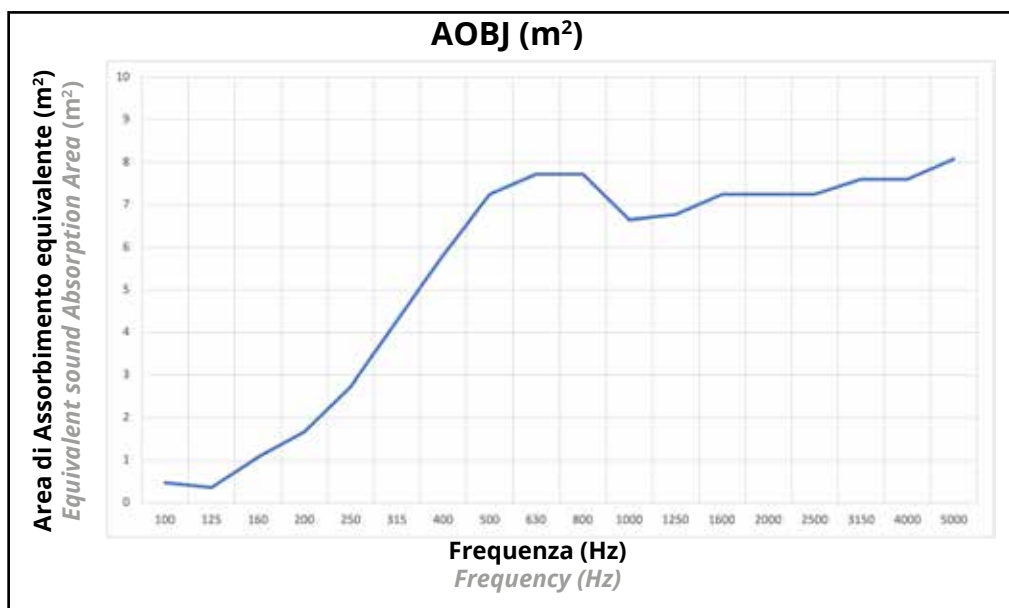
SNOWSOUND-FIBER 12

Tessuto: PLANARE
Fabric: PLANAR

Installazione: Distanza da parete 10cm (D=10cm)
Installation: Distance from the wall 10cm (D=10cm)



La prova è stata eseguita secondo le prescrizioni della norma UNI EN ISO 354
Test executed according to UNI EN ISO 354



La prova è stata eseguita secondo le prescrizioni della norma UNI EN ISO 354
Test executed according to UNI EN ISO 354