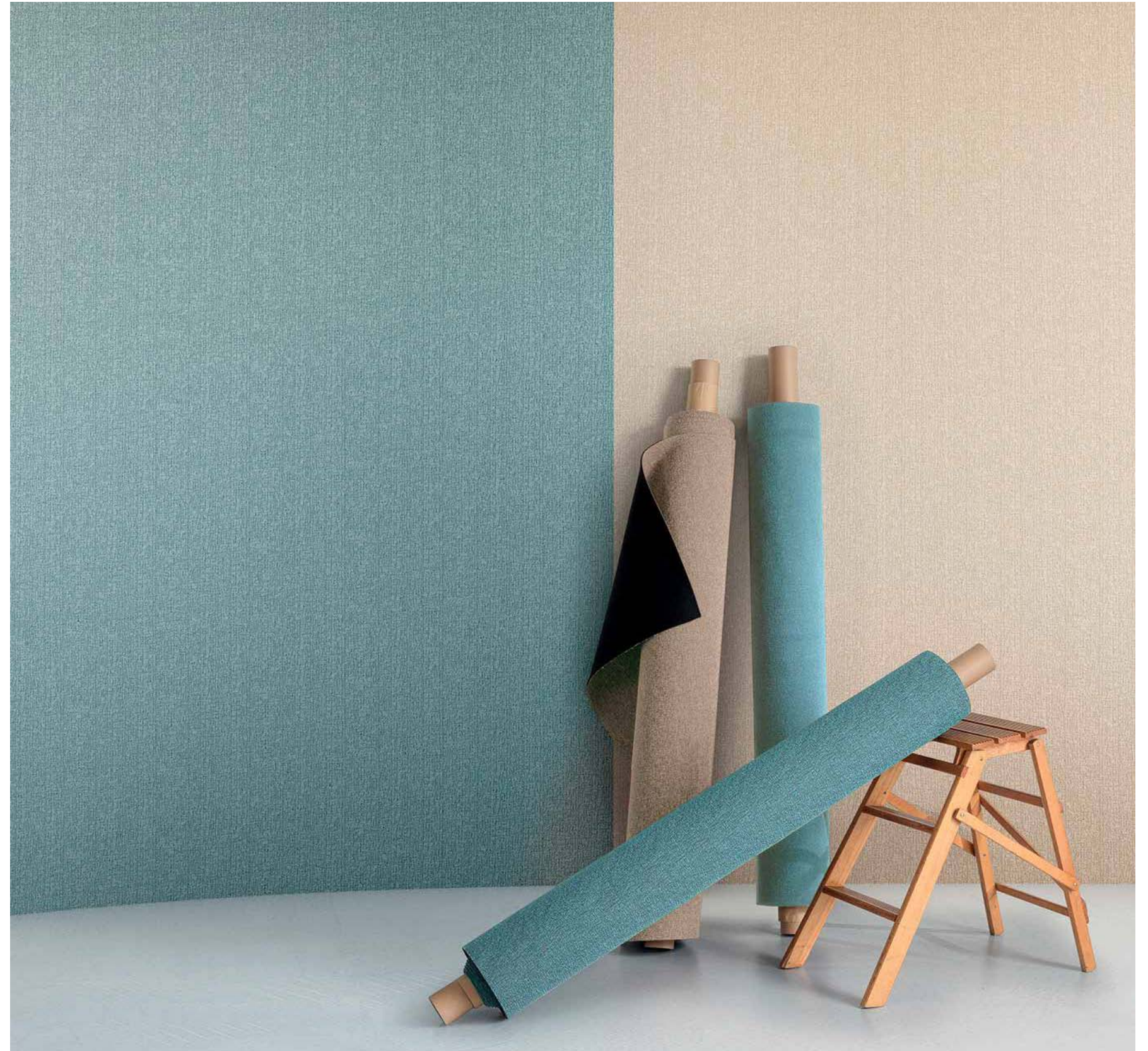


# SNOWALL



SNOWSOUND

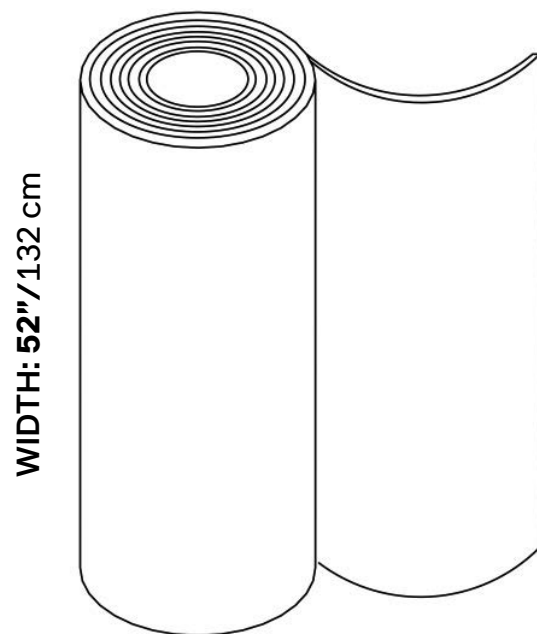


Spec Guide 2024 V1.0



# SNOWALL

Snowall is an acoustic wall-covering constructed of 100% polyester felt paired with Snowsound Fiber patented acoustic textiles as the top cover, using a unique application system. The felt backing to the Snowsound-Fiber and the absence of space between the two materials significantly reduce its propensity to attract dust, pollen, and insects. Snowall is available in rolls of different lengths. Snowall is environmentally friendly, 100% recyclable, Greenguard Gold Certified, Class A fire-rated, and has no detectable formaldehyde content, tested according to the UNI EN 717-2. Snowall is available with Snowsound Fiber 3 Mélange and Fiber 8 Bouclè fabric coverings. Snowall can be easily glued to the wall like any standard typical wall-covering.



## PHYSICAL PROPERTIES

Content	100% Fire Resistant, Acoustic Sound Absorbing Polyester Fibers with Patented Snowsound Technology
Backing	100% Polyester Felt
Width	52" // 132 cm (tolerance + 0 – 3 cm)
Thickness	4 mm

## ACOUSTIC PERFORMANCE & NOISE REDUCTION RATING

Absorption Coefficient & NRC	NRC - 0.25, SAA - 0.27 (ASTM C423 / ISO 354)
------------------------------	--

## PERFORMANCE - FIBER 3

Flame Resistance	Passes NFPA 701 // NFPA 260 // CAL. TB 117 // UL 723 Class A // ASTM E 84 Class A
Environment	100% Recyclable and GREENGUARD GOLD Certified, LEED v4 Credits and Certification, Declare Label, LBC Red List Free
Colorfastness to Light	Grade 7 – “Outstanding” (Passes AATCC 16 / ISO 105–B02:2014)
Propensity to Surface Fuzzing and Pilling	Grade 5 – “no change” (Passes ISO 12945–2:2002)

## PERFORMANCE - FIBER 8

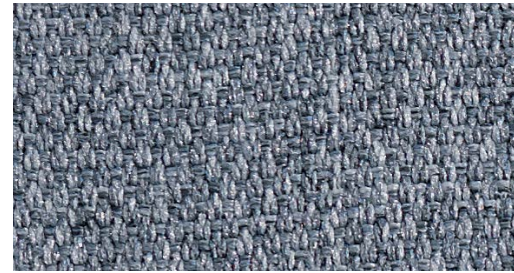
Flame Resistance	Passes NFPA 701 // NFPA 260 // CAL. TB 117 // UL 723 Class A // ASTM E 84 Class A
Environment	100% Recyclable and GREENGUARD GOLD Certified, LEED v4 Credits and Certification, Declare Label, LBC Red List Free
Colorfastness to Light	Grade 6/7 – “Excellent” (Passes AATCC 16/ ISO 105–B02:2014)
Propensity to Surface Fuzzing and Pilling	Grade 5 – “no change” (Passes ISO 12945–2:2002)



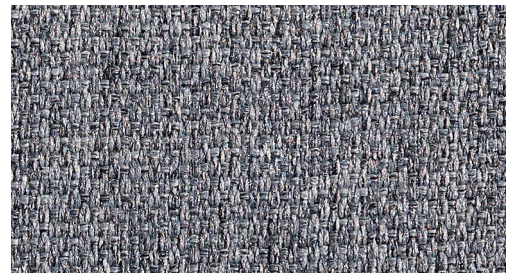
# SNOWALL FIBER 3 SWATCHES

Contact Snowsound for information on lead time.

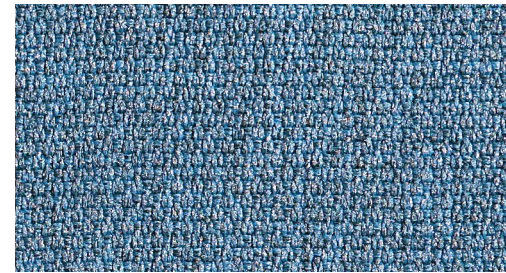
## STANDARD COLORS - GROUP A



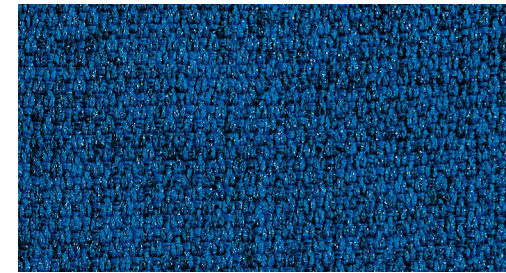
Gray Ice 300



Gray Beige 304



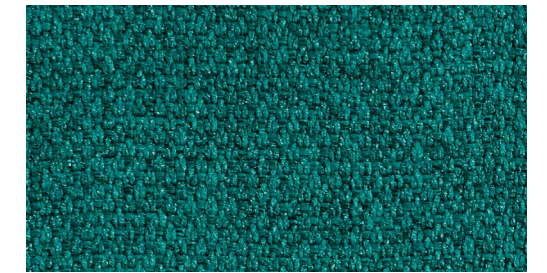
Azure 305



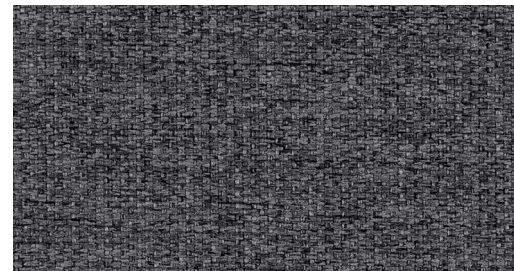
Gray Blue 308



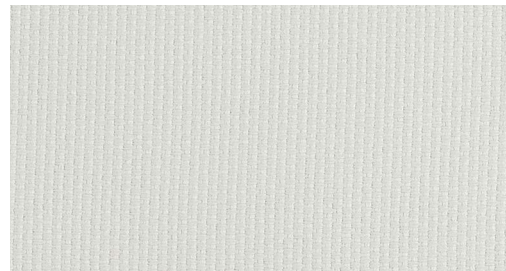
Gray Green 309



Fiji 315

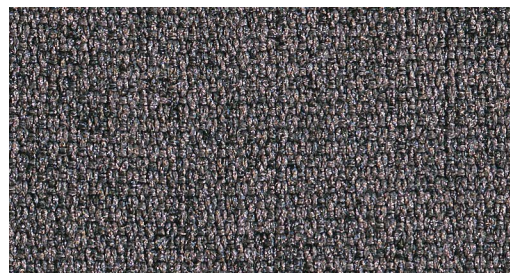


Carbon Gray 311



Ivory 316

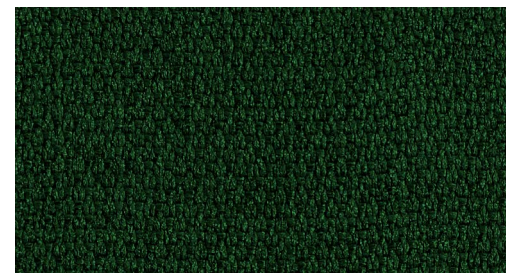
## STANDARD COLORS - GROUP B



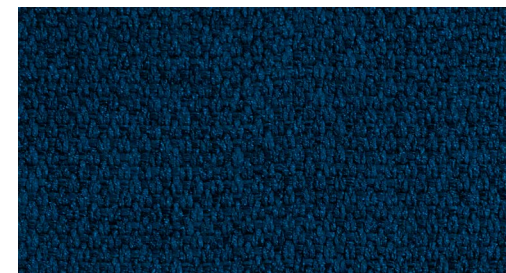
Gray Taupe 303



Anthracite 302



Evergreen 313



Admiral Blue 314

Item No	7SWF3-4-XXX	7SWF3-5-XXX	7SWF3-6-XXX	7SWF3-7-XXX	7SWF3-8-XXX	7SWF3-9-XXX	7SWF3-10-XXX	7SWF3-15-XXX
Roll Size	52" x 4.3 yd	52" x 5.4 yd	52" x 6.5 yd	52" x 7.6 yd	52" x 8.7 yd	52" x 9.8 yd	52" x 10.9 yd	52" x 16.4 yd
Sq Ft per Roll	56 sf	71 sf	85 sf	99 sf	113 sf	127 sf	142 sf	213 sf

Standard Colors Group A and Group B are available colors and do not require any minimum order quantity.

The lead time for Group A is 6-12 weeks, and for Group B is 10-16 weeks.

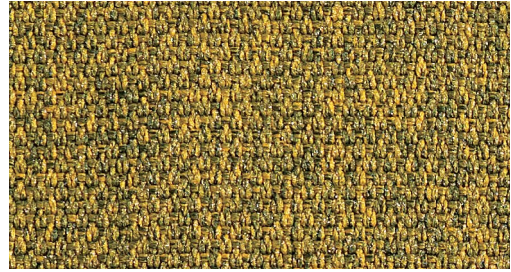
Special Order Colors require a minimum order quantity as specified and have a lead time of 10-16 weeks.



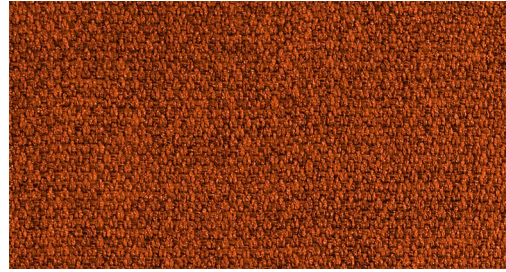
# SNOWALL FIBER 3 SWATCHES

Contact Snowsound for information on lead time.

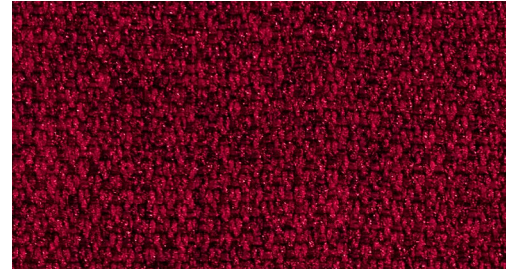
## SPECIAL ORDER COLORS



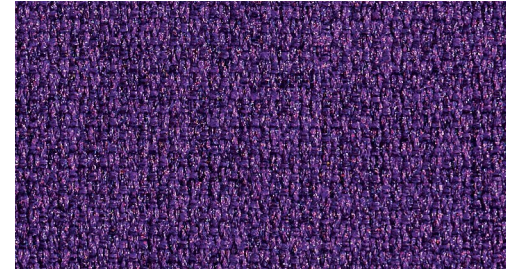
Gray Gold 310



Patina 312



Gray Burgundy 306



Gray Plum 307

Item No	7SWF3-45-XXX
Roll Size	52" x 49 yd
Total Sq Ft (with MOQ incl.)	639 sf

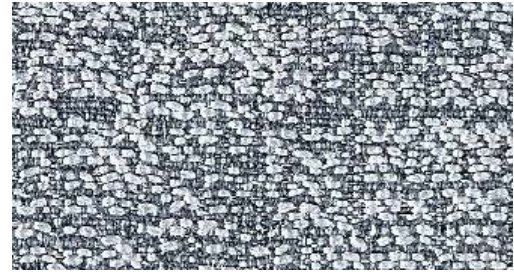
Standard Colors Group A and Group B are available colors and do not require any minimum order quantity. The lead time for Group A is 6-12 weeks, and for Group B is 10-16 weeks. Special Order Colors require a minimum order quantity as specified and have a lead time of 10-16 weeks.



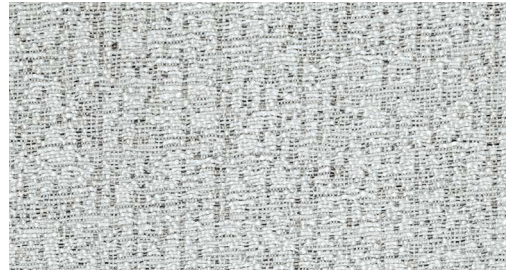
# SNOWALL FIBER 8 SWATCHES

Contact Snowsound for information on lead time.

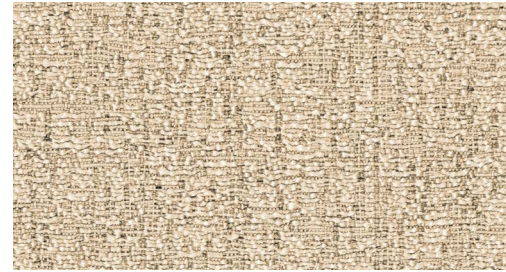
## STANDARD COLORS - GROUP A



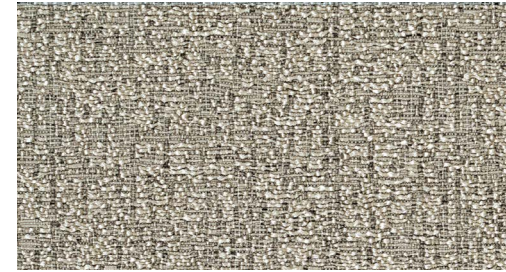
Gray Ice 801



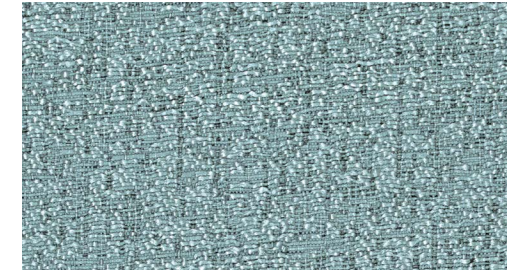
Frost 810



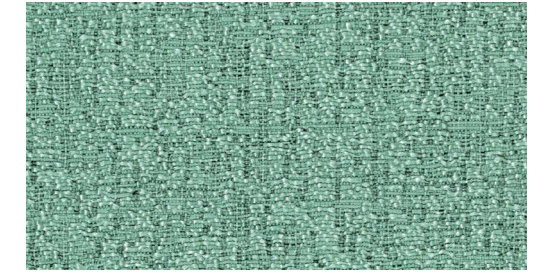
Sahara 812



Yosemite 813



Arctic 814

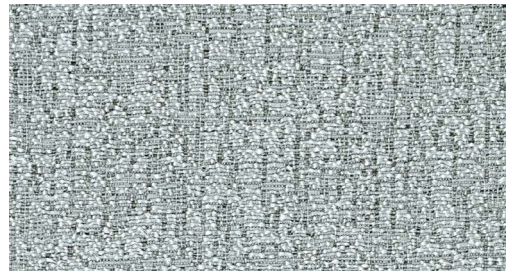


Mint 815

## STANDARD COLORS - GROUP B



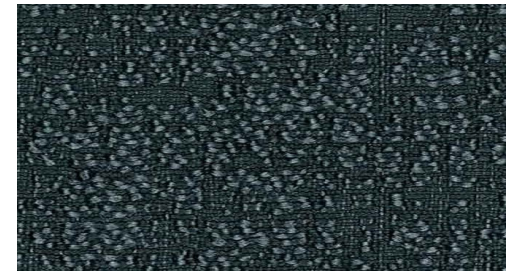
Gray Beige 802



Rhino 811



Dove Coffee 800



Graphite 803

Item No	7SWF8-4-XXX	7SWF8-5-XXX	7SWF8-6-XXX	7SWF8-7-XXX	7SWF8-8-XXX	7SWF8-9-XXX	7SWF8-10-XXX	7SWF8-15-XXX
Roll Size	52" x 4.3 yd	52" x 5.4 yd	52" x 6.5 yd	52" x 7.6 yd	52" x 8.7 yd	52" x 9.8 yd	52" x 10.9 yd	52" x 16.4 yd
Sq Ft per Roll	56 sf	71 sf	85 sf	99 sf	113 sf	127 sf	142 sf	213 sf

Standard Colors Group A and Group B are available colors and do not require any minimum order quantity.

The lead time for Group A is 6-12 weeks, and for Group B is 10-16 weeks.

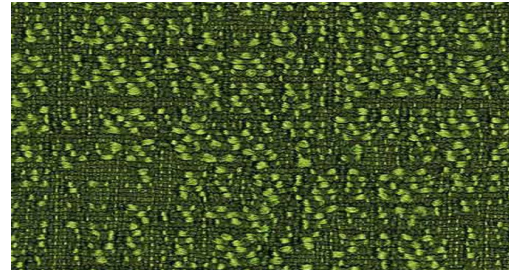
Special Order Colors require a minimum order quantity as specified and have a lead time of 10-16 weeks.



# SNOWALL FIBER 8 SWATCHES

Contact Snowsound for information on lead time.

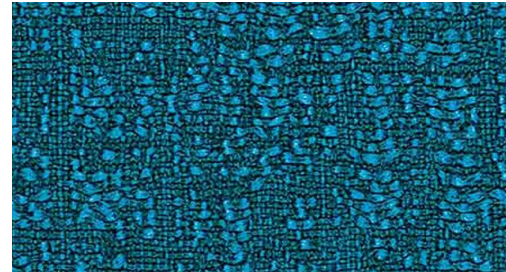
## SPECIAL ORDER COLORS



Clover 804



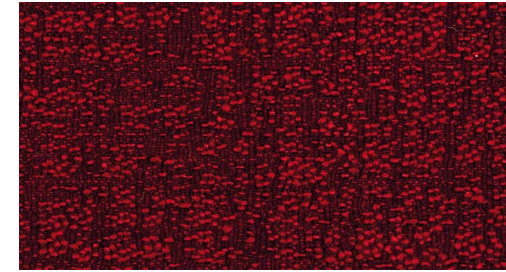
Oxford 805



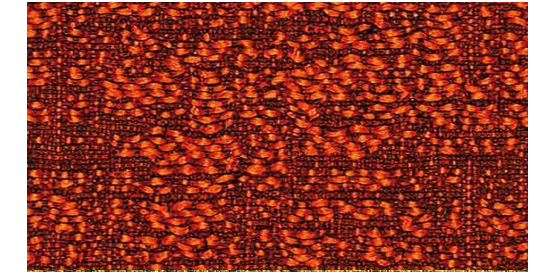
Syreni Blue 806



Obsidian 807



Garnet 808



Sandstone 809

Item No	7SWF8-45-XXX
Roll Size	52" x 49 yd
Total Sq Ft (with MOQ incl.)	639 sf

Standard Colors Group A and Group B are available colors and do not require any minimum order quantity. The lead time for Group A is 6-12 weeks, and for Group B is 10-16 weeks. Special Order Colors require a minimum order quantity as specified and have a lead time of 10-16 weeks.