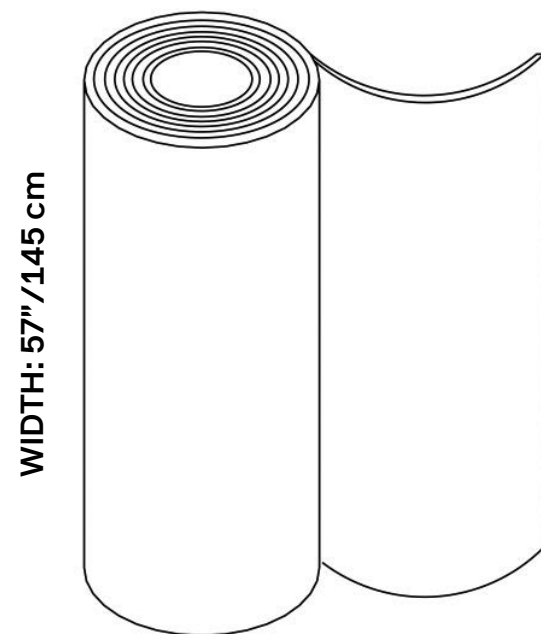


FIBER 8 BOUCLÈ



FIBER 8 BOUCLÈ



SNOWSOUND

PHYSICAL PROPERTIES

Content	100% Fire Resistant, Acoustic Sound Absorbing Polyester Fibers with Patented Snowsound Technology
Backing	Unbacked
Width	57" // 145 cm (tolerance + 0 – 3 cm)
Weight	13.6 oz per square yard / 21.5 oz per linear yard
Thickness	1.6 mm

ACOUSTIC PERFORMANCE & NOISE REDUCTION RATING

Absorption Coefficient & NRC	Class A Sound Absorption per ISO 11654 with NRC 1.0 achievable depending on installation. Please refer to on-line technical sheets for details
------------------------------	--

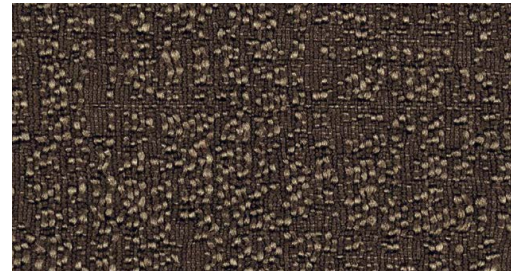
PERFORMANCE

Flame Resistance	Passes NFPA 701 // NFPA 260 // CAL. TB 117 // UL 723 Class A // ASTM E 84 Class A
Environment	100% Recyclable and GREENGUARD GOLD Certified
Abrasion Resistance	25,000 rubs /cycles (tested according to Martindale Method)
Colorfastness to Light	Grade 6/7 – “Excellent” (Passes AATCC 16 / ISO 105–B02:2014)
Colorfastness to Wet and Dry Crocking	Wet & Dry – Grade 5 (Passes AATCC 8 / ISO 105–X12: 2016)
Propensity to Surface Fuzzing and Pilling	Grade 5 – “no change” (Passes ISO 12945–2:2002)
Washing & Maintenance	Normal machine washing up to 86 degrees Fahrenheit. Ironing on low heat acceptable. Dry cleaning is acceptable (any solvent except Trichloroethylene). Do not tumble dry.

FIBER 8 BOUCLÉ SWATCHES

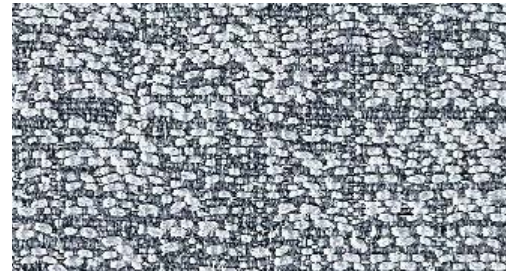
SPECS

Rolls	27.3yd/25m	8.7yd/8m
-------	------------	----------



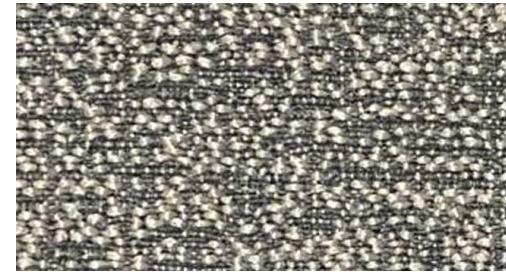
Dove Coffee

27.3 yd	7F8-25-800
8.7 yd	7F8-8-800



Gray Ice

27.3 yd	7F8-25-801
8.7 yd	7F8-8-801



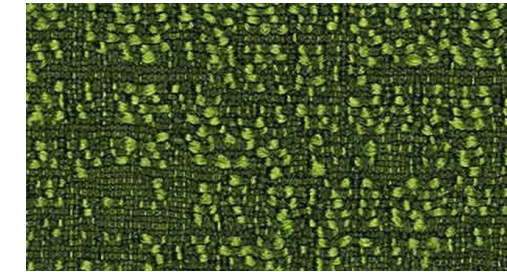
Gray Beige

27.3 yd	7F8-25-802
8.7 yd	7F8-8-802



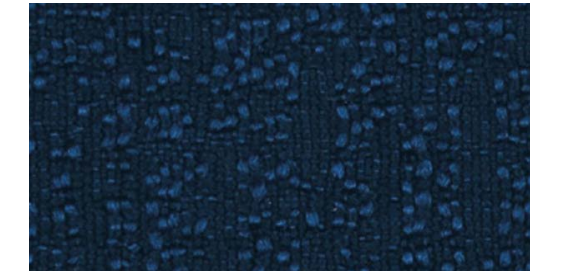
Graphite

27.3 yd	7F8-25-803
8.7 yd	7F8-8-803



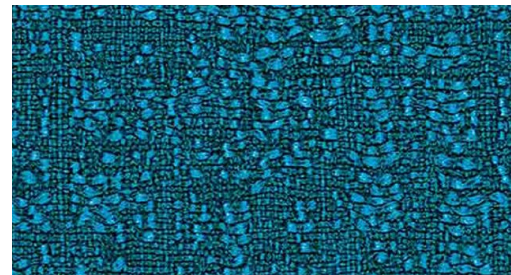
Clover

27.3 yd	7F8-25-804
8.7 yd	7F8-8-804



Oxford

27.3 yd	7F8-25-805
8.7 yd	7F8-8-805



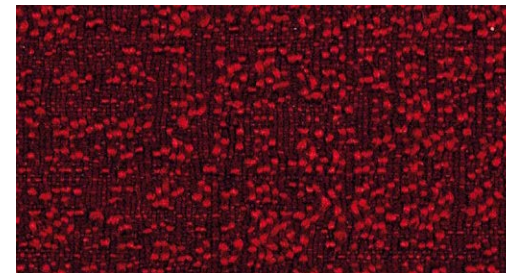
Syreni Blue

27.3 yd	7F8-25-806
8.7 yd	7F8-8-806



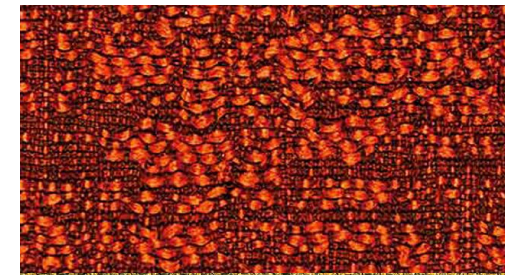
Obsedian

27.3 yd	7F8-25-807
8.7 yd	7F8-8-807



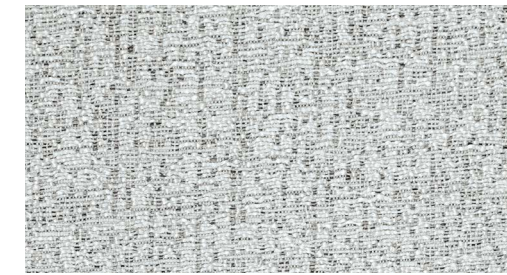
Garnet

27.3 yd	7F8-25-808
8.7 yd	7F8-8-808



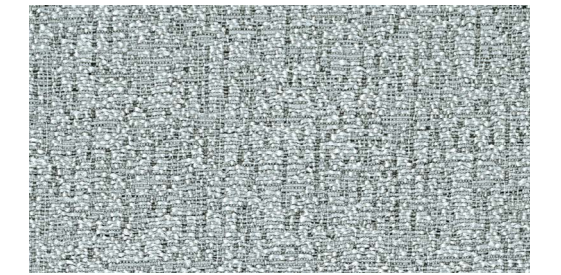
Sandstone

27.3 yd	7F8-25-809
8.7 yd	7F8-8-809



Frost

27.3 yd	7F8-25-810
8.7 yd	7F8-8-810



Rhino

27.3 yd	7F8-25-811
8.7 yd	7F8-8-811



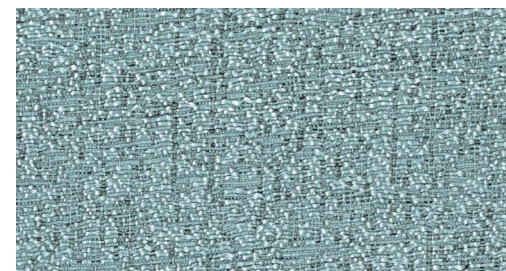
Sahara

27.3 yd	7F8-25-812
8.7 yd	7F8-8-812



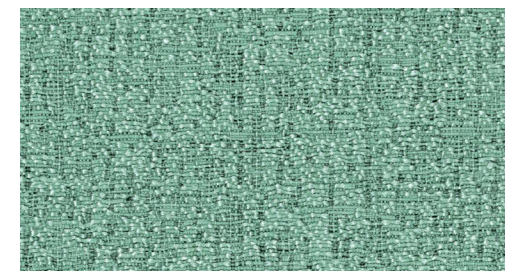
Yosemite

27.3 yd	7F8-25-813
8.7 yd	7F8-8-813



Arctic

27.3 yd	7F8-25-814
8.7 yd	7F8-8-814



Mint

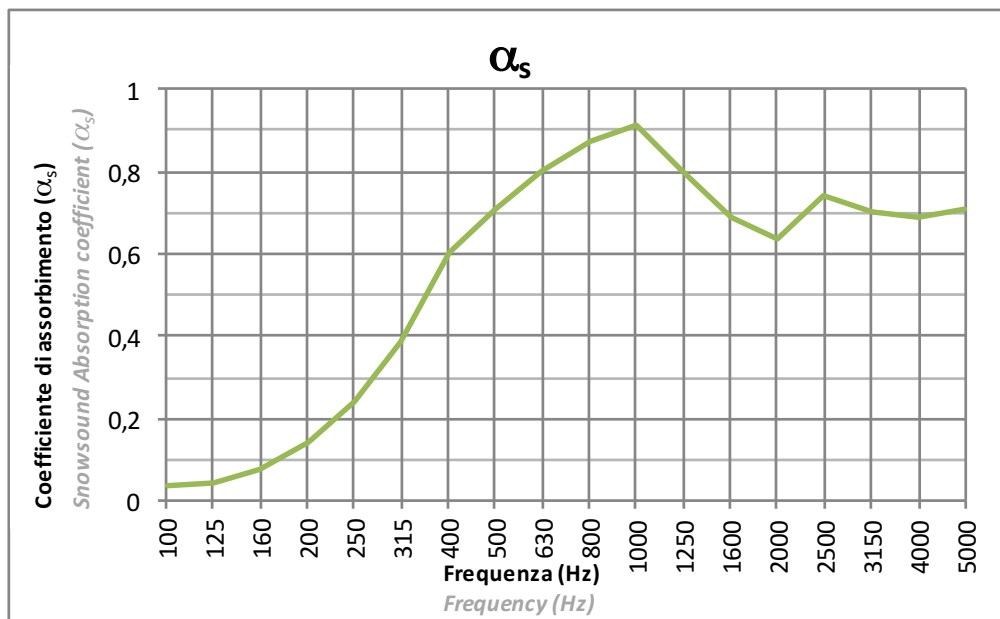
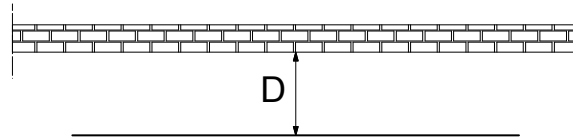
27.3 yd	7F8-25-815
8.7 yd	7F8-8-815

Custom length rolls between 8.7 yards and 27.3 yards are available on request with extended lead time and cutting fee.
Please contact your local representative for information.

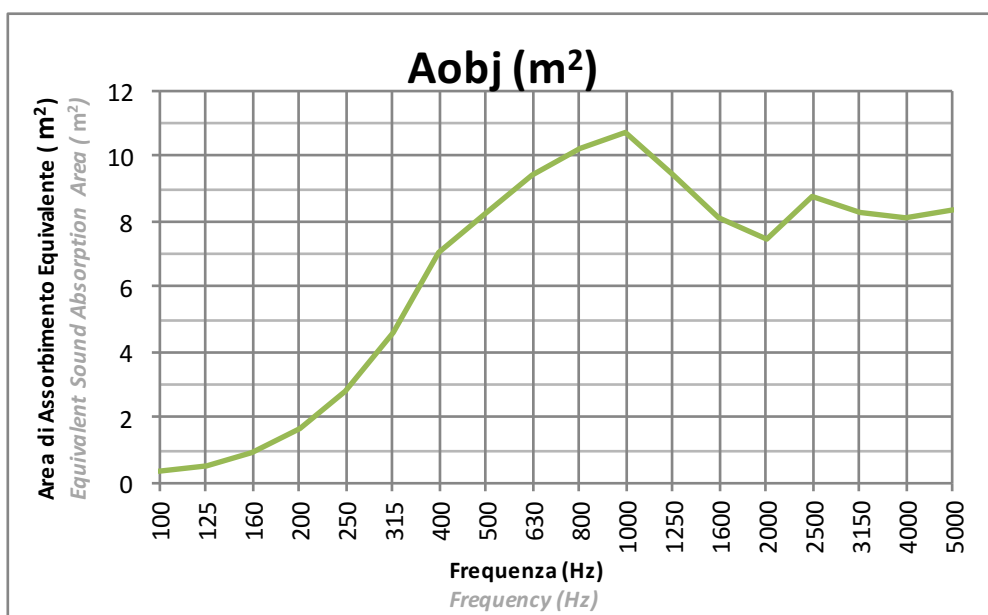
SNOWSOUND-FIBER 8

Tessuto: PLANARE
Fabric: FLAT

Installazione: Distanza da parete 10cm (D=10cm)
Installation: Distance from the wall 10cm (D=10cm)



La prova è stata eseguita secondo le prescrizioni della norma UNI EN ISO 354
Test executed according to UNI EN ISO 354



La prova è stata eseguita secondo le prescrizioni della norma UNI EN ISO 354
Test executed according to UNI EN ISO 354

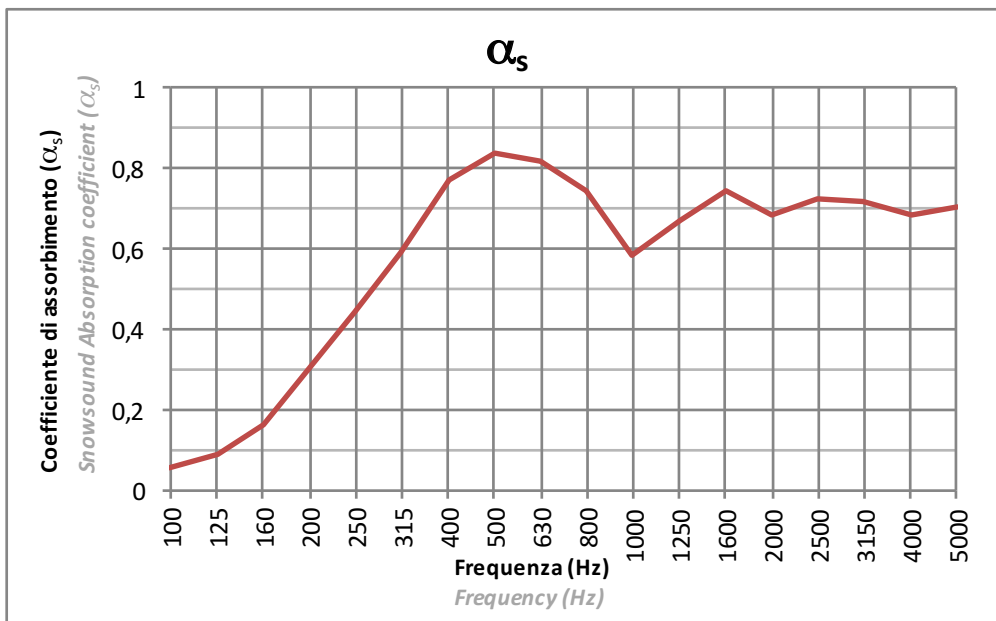
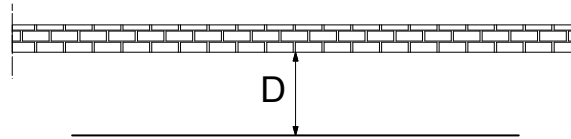
SNOWSOUND-FIBER 8

Tessuto: PLANARE

Fabric: FLAT

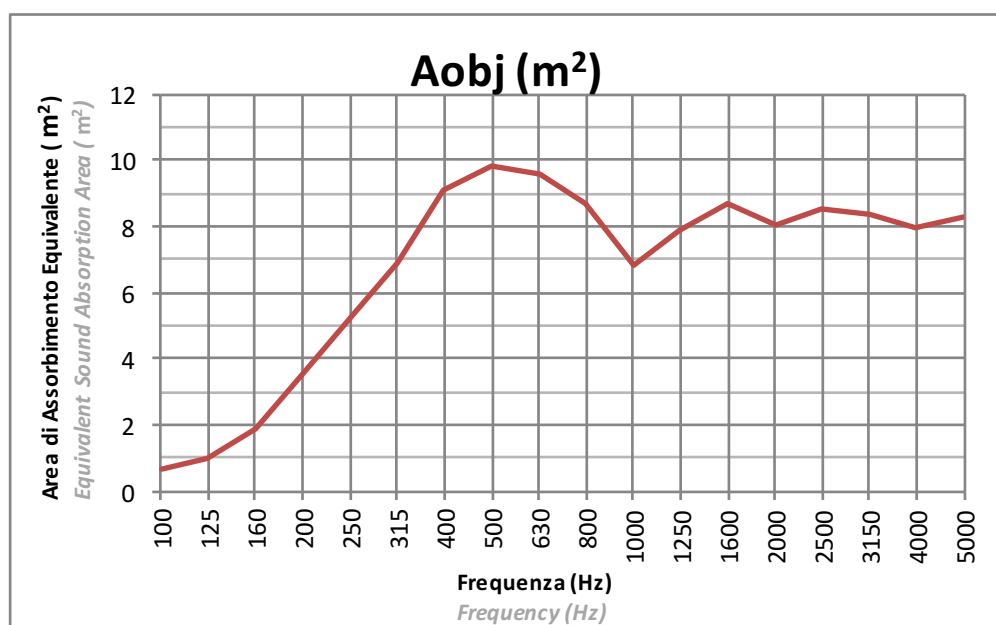
Installazione: Distanza da parete 20cm (D=20cm)

Installation: Distance from the wall 20cm (D=20cm)



La prova è stata eseguita secondo le prescrizioni della norma UNI EN ISO 354

Test executed according to UNI EN ISO 354



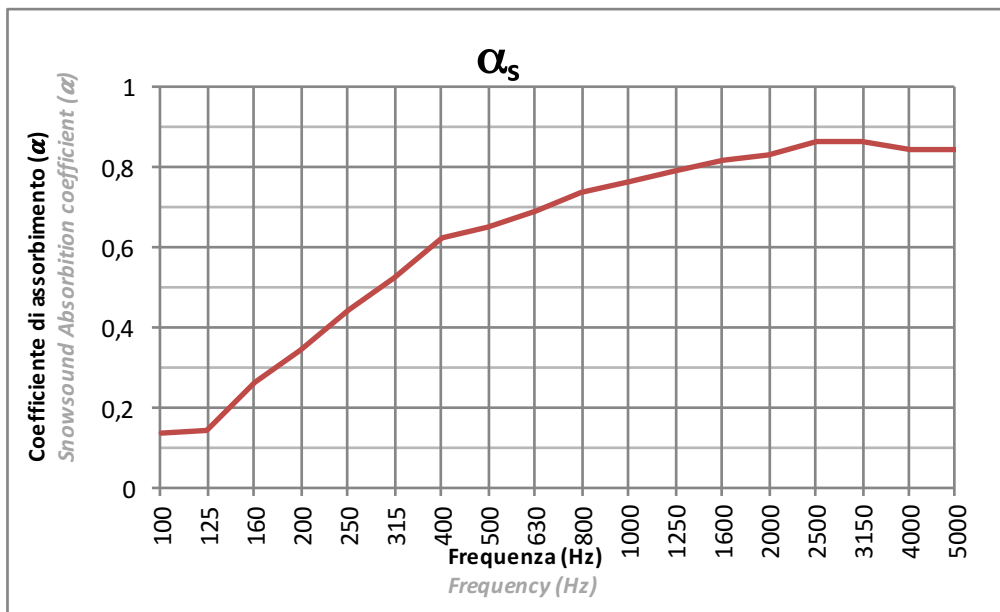
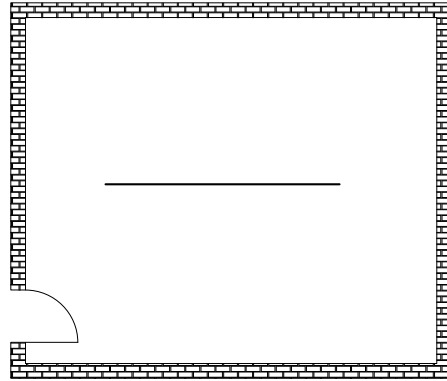
La prova è stata eseguita secondo le prescrizioni della norma UNI EN ISO 354

Test executed according to UNI EN ISO 354

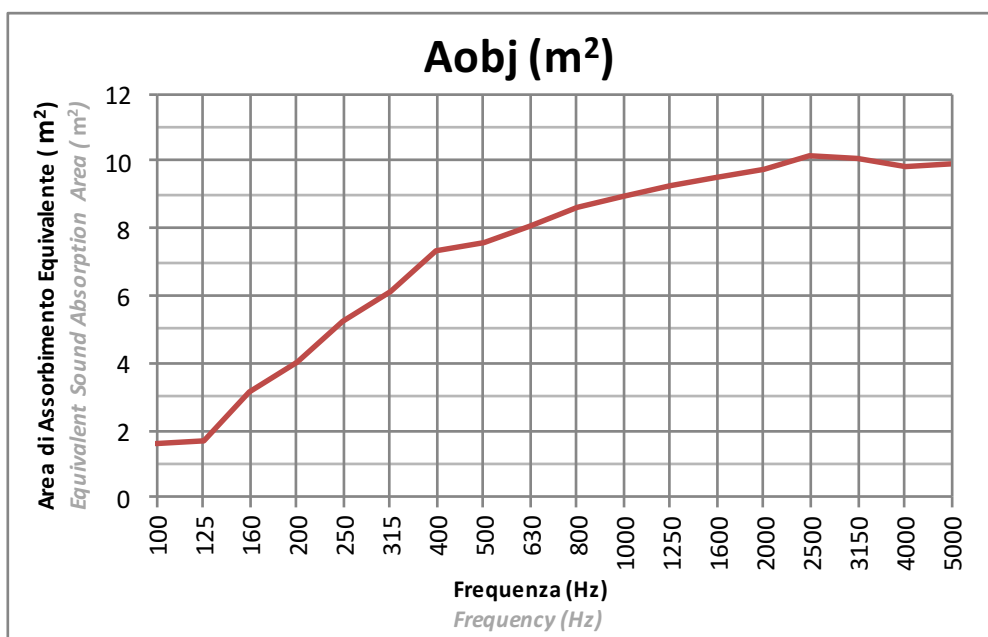
SNOWSOUND-FIBER 8

Tessuto: PLANARE
Fabric: FLAT

Installazione: CENTRO STANZA
Installation: CENTER OF THE ROOM



Procedura Sperimentale
Experimental Procedure

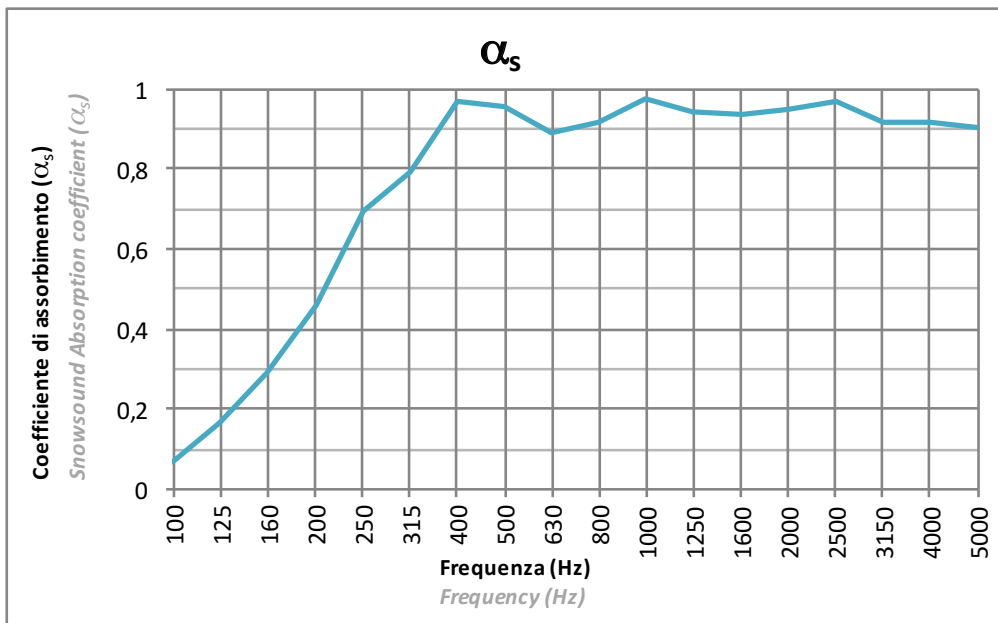
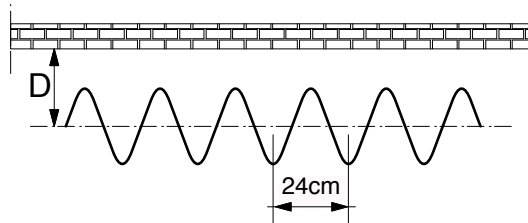


La prova è stata eseguita secondo le prescrizioni della norma UNI EN ISO 354
Test executed according to UNI EN ISO 354

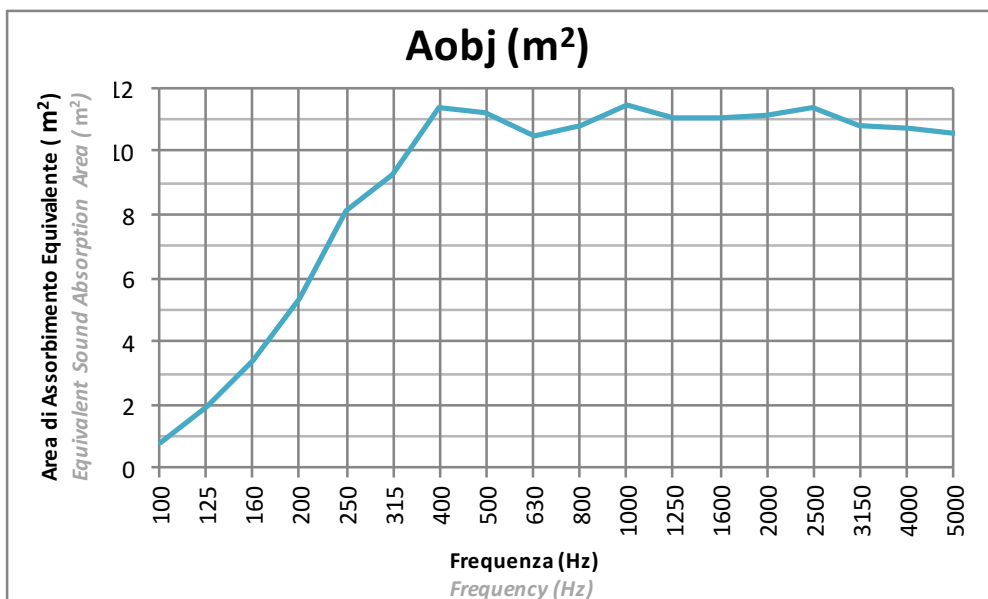
SNOWSOUND-FIBER 8

Tessuto: ONDULATO a passo 24cm
Fabric: WAVY (24cm pace)

Installazione: Distanza dall'asse da parete 20cm (D=20cm)
Installation: Wall to axis distance 20cm (D=20cm)



La prova è stata eseguita secondo le prescrizioni della norma UNI EN ISO 354
Test executed according to UNI EN ISO 354

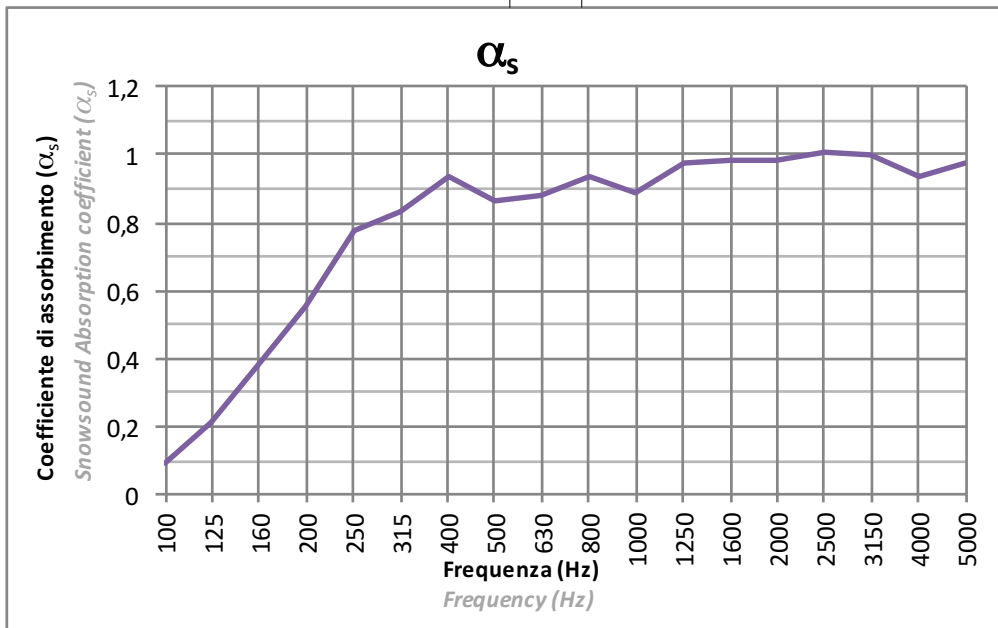
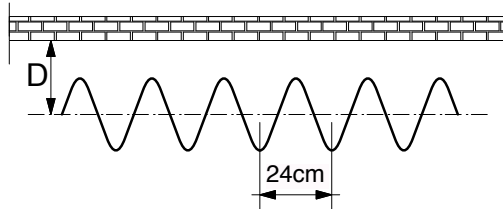


La prova è stata eseguita secondo le prescrizioni della norma UNI EN ISO 354
Test executed according to UNI EN ISO 354

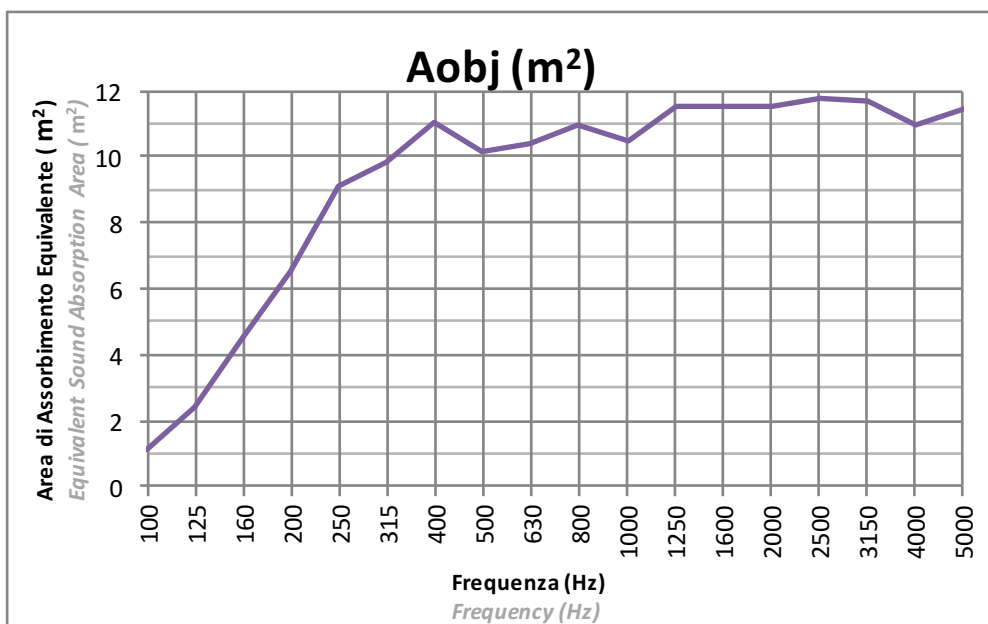
SNOWSOUND-FIBER 8

Tessuto: ONDULATO a passo 24cm
Fabric: WAVY (24cm pace)

Installazione: Distanza dall'asse da parete 30cm (D=30cm)
Installation: Wall to axis distance 30cm (D=30cm)



La prova è stata eseguita secondo le prescrizioni della norma UNI EN ISO 354
Test executed according to UNI EN ISO 354

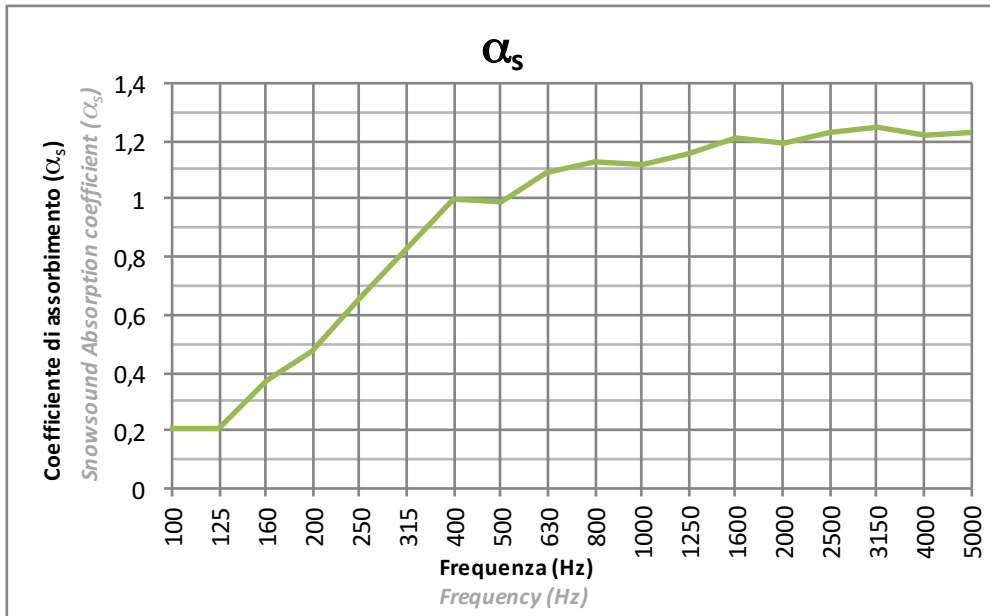
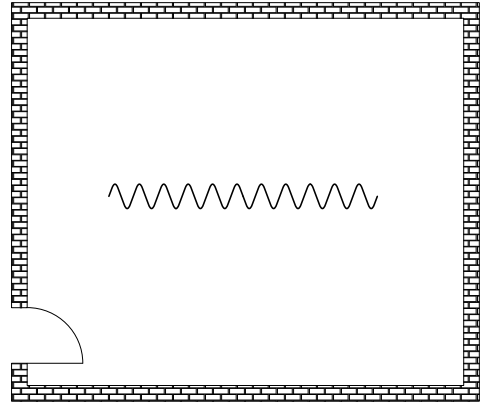
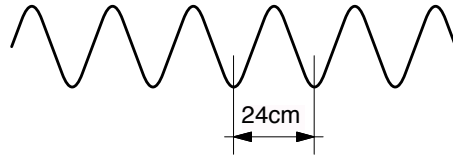


La prova è stata eseguita secondo le prescrizioni della norma UNI EN ISO 354
Test executed according to UNI EN ISO 354

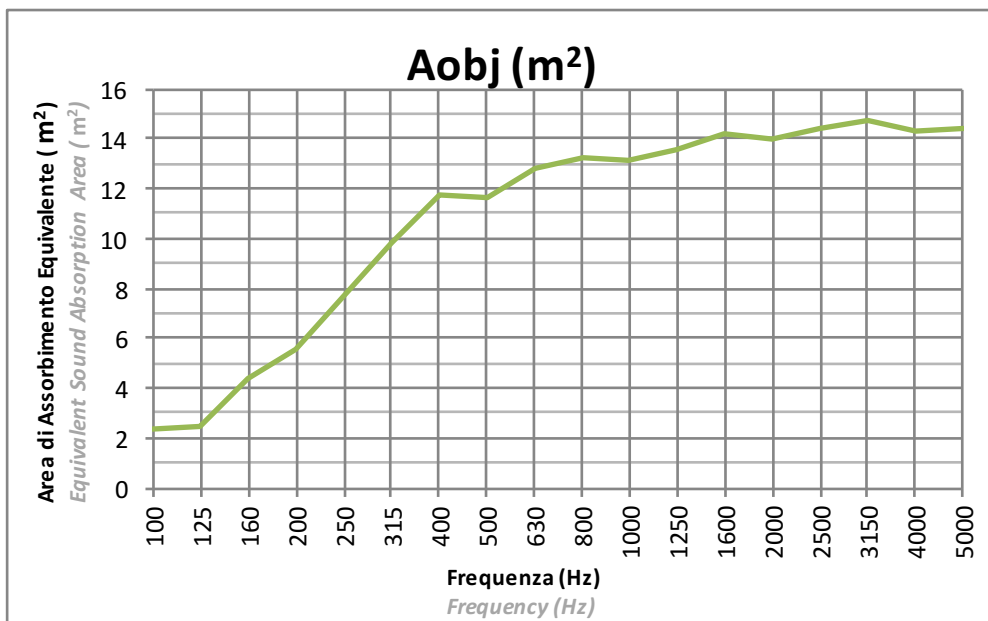
SNOWSOUND-FIBER 8

Tessuto: ONDULATO a passo 24cm
Fabric: WAVY (24cm pace)

Installazione: CENTRO STANZA
Installation: CENTER OF THE ROOM



Procedura Sperimentale
Experimental Procedure



La prova è stata eseguita secondo le prescrizioni della norma UNI EN ISO 354
Test executed according to UNI EN ISO 354