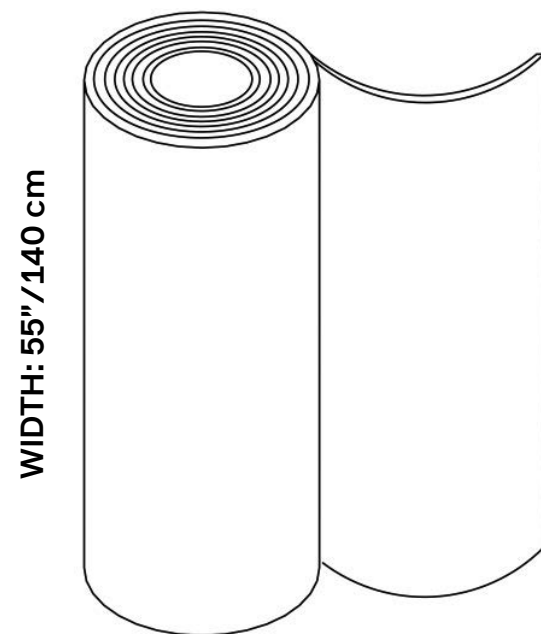


FIBER 3 MELANGE



FIBER 3 MELANGE



SNOWSOUND

PHYSICAL PROPERTIES

Content	100% Fire Resistant, Acoustic Sound Absorbing Polyester Fibers with Patented Snowsound Technology
Backing	Unbacked
Width	55" // 140 cm (tolerance + 0 – 3 cm)
Weight	10.0 oz per square yard / 15.4 oz per linear yard
Thickness	1 mm

ACOUSTIC PERFORMANCE & NOISE REDUCTION RATING

Absorption Coefficient & NRC	Class A Sound Absorption per ISO 11654 with NRC 1.0 achievable depending on installation. Please refer to on-line technical sheets for details
------------------------------	--

PERFORMANCE

Flame Resistance	Passes NFPA 701 // NFPA 260 // CAL. TB 117 // UL 723 Class A // ASTM E 84 Class A
Environment	100% Recyclable and GREENGUARD GOLD Certified
Abrasion Resistance	50,000 rubs /cycles (tested according to Martindale Method)
Colorfastness to Light	Grade 7 – “Outstanding” (Passes AATCC 16 / ISO 105–B02:2014)
Colorfastness to Crocking	Wet – Grade 5. Dry – Grade 4/5. (Passes AATCC 8 / ISO 105–X12: 2016)
Propensity to Surface Fuzzing and Pilling	Grade 5 – “no change” (Passes ISO 12945–2:2002)
Washing & Maintenance	Normal machine washing up to 86 degrees Fahrenheit. Ironing on low heat acceptable. Dry cleaning is acceptable (any solvent except Trichloroethylene). Do not tumble dry.

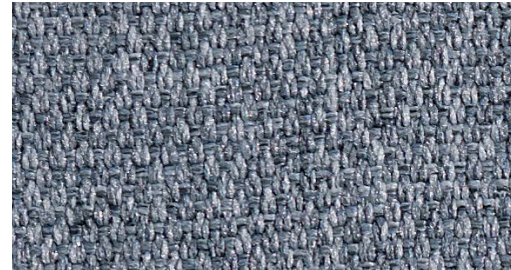
FIBER 3 MELANGE SWATCHES

SPECS

Yard rolls

27.3yd/25m

8.7yd/8m



Gray Ice

27.3 yd 7F3-25-300

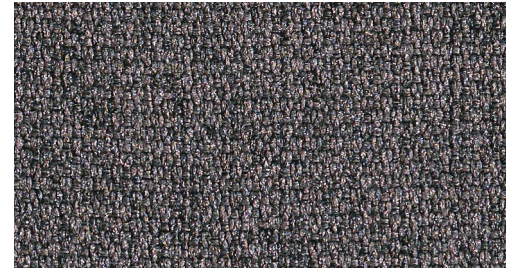
8.7 yd 7F3-8-300



Anthracite

27.3 yd 7F3-25-302

8.7 yd 7F3-8-302



Gray Taupe

27.3 yd 7F3-25-303

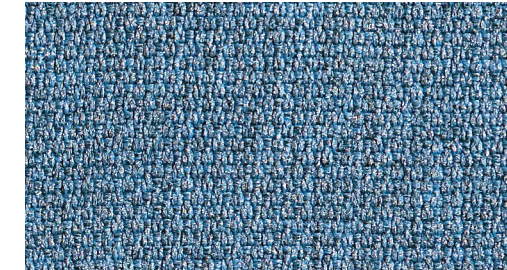
8.7 yd 7F3-8-303



Gray Beige

27.3 yd 7F3-25-304

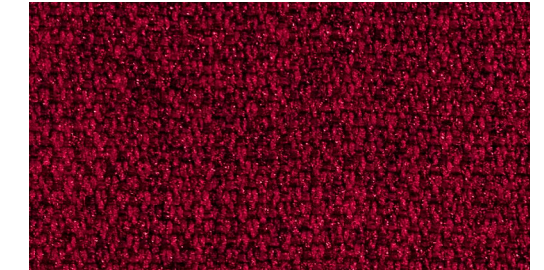
8.7 yd 7F3-8-304



Azure

27.3 yd 7F3-25-305

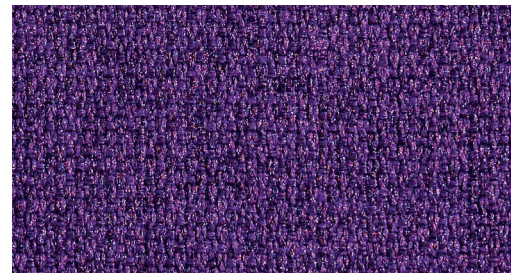
8.7 yd 7F3-8-305



Gray Burgundy

27.3 yd 7F3-25-306

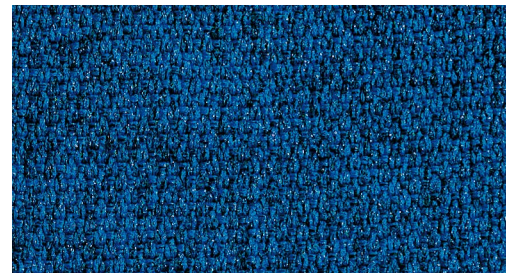
8.7 yd 7F3-8-306



Gray Plum

27.3 yd 7F3-25-307

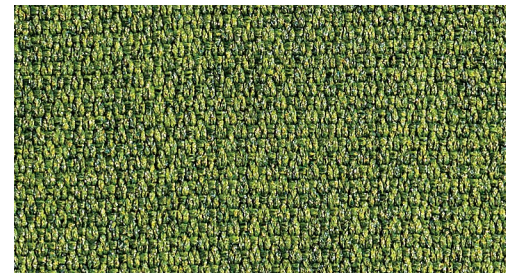
8.7 yd 7F3-8-307



Gray Blue

27.3 yd 7F3-25-308

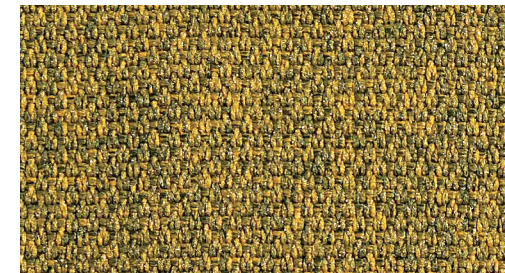
8.7 yd 7F3-8-308



Gray Green

27.3 yd 7F3-25-309

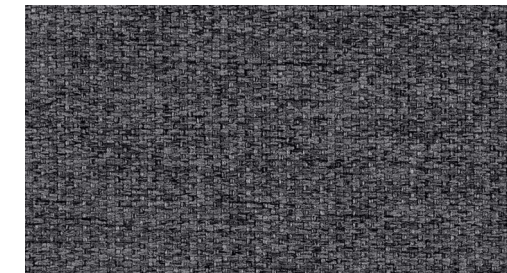
8.7 yd 7F3-8-309



Gray Gold

27.3 yd 7F3-25-310

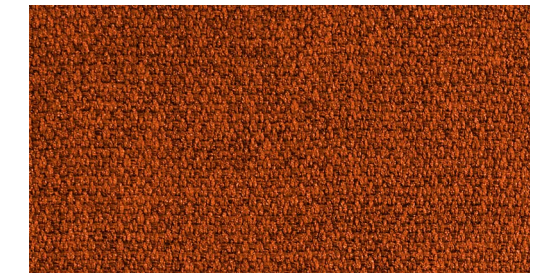
8.7 yd 7F3-8-310



Carbon Gray

27.3 yd 7F3-25-311

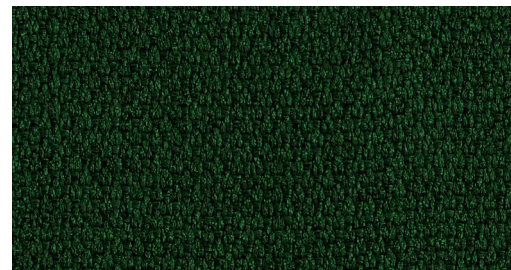
8.7 yd 7F3-8-311



Patina

27.3 yd 7F3-25-312

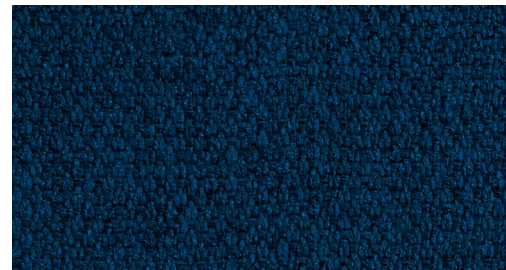
8.7 yd 7F3-8-312



Evergreen

27.3 yd 7F3-25-313

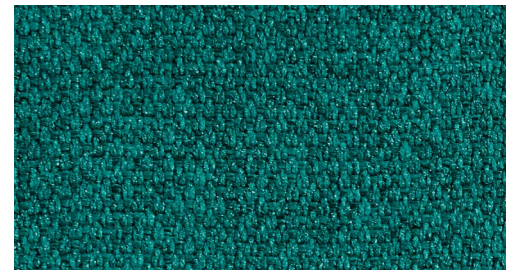
8.7 yd 7F3-8-313



Admiral Blue

27.3 yd 7F3-25-314

8.7 yd 7F3-8-314



Fiji

27.3 yd 7F3-25-315

8.7 yd 7F3-8-315



Ivory

27.3 yd 7F3-25-316

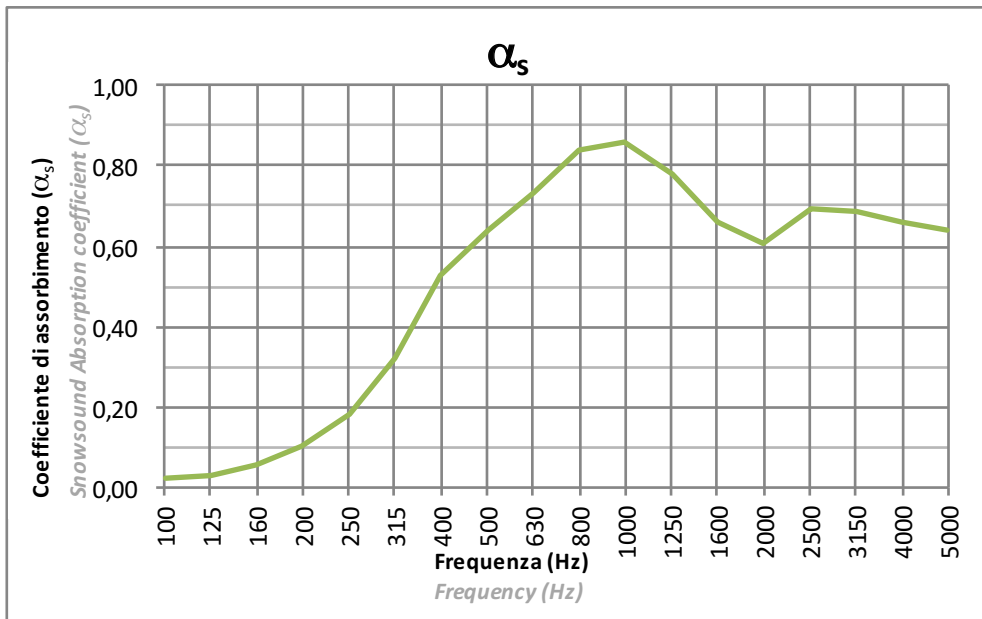
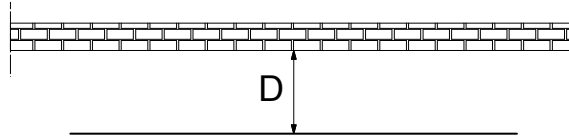
8.7 yd 7F3-8-316

Custom length rolls between 8.7 yards and 27.3 yards are available on request with extended lead time and cutting fee.
Please contact your local representative for information.

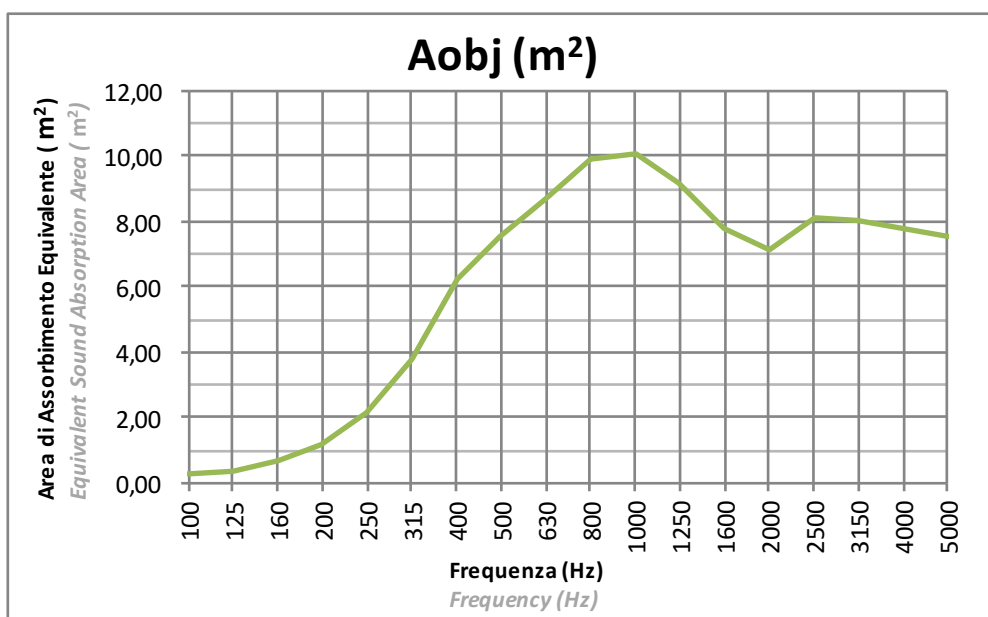
SNOWSOUND-FIBER 3

Tessuto: PLANARE
Fabric: FLAT

Installazione: Distanza da parete 10cm (D=10cm)
Installation: Distance from the wall 10cm (D=10cm)



La prova è stata eseguita secondo le prescrizioni della norma UNI EN ISO 354
Test executed according to UNI EN ISO 354

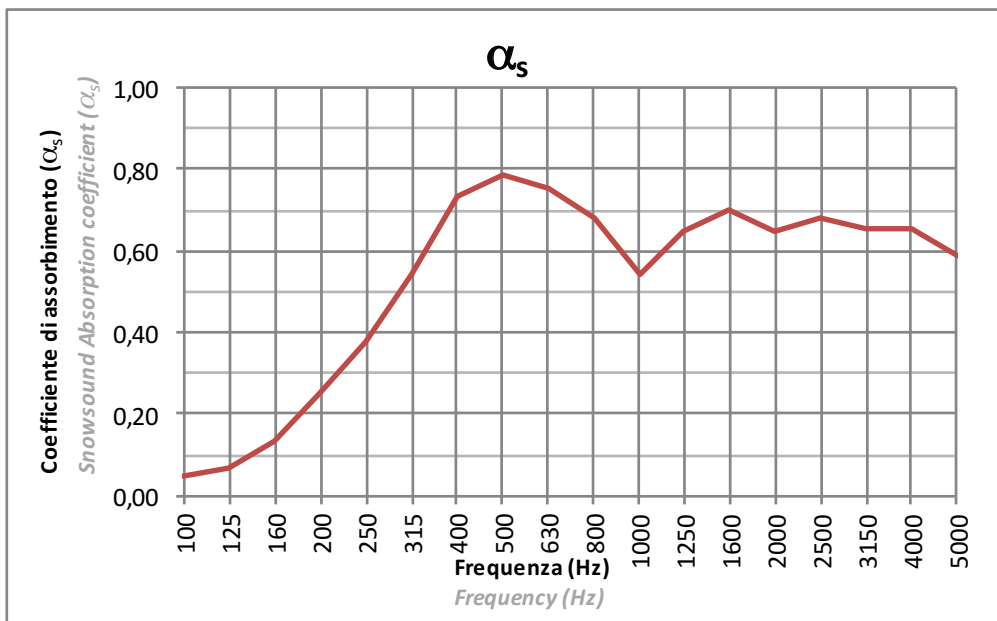
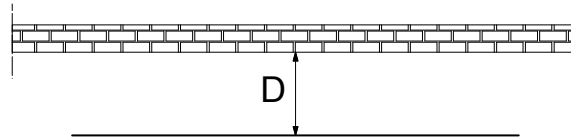


La prova è stata eseguita secondo le prescrizioni della norma UNI EN ISO 354
Test executed according to UNI EN ISO 354

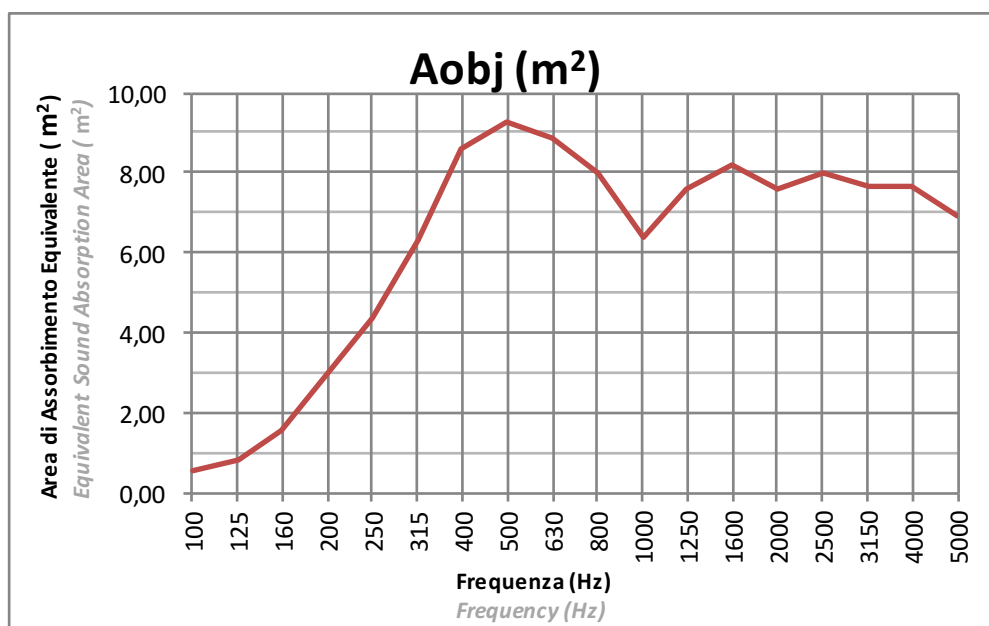
SNOWSOUND-FIBER 3

Tessuto: PLANARE
Fabric: FLAT

Installazione: Distanza da parete 20cm (D=20cm)
Installation: Distance from the wall 20cm (D=20cm)



La prova è stata eseguita secondo le prescrizioni della norma UNI EN ISO 354
Test executed according to UNI EN ISO 354

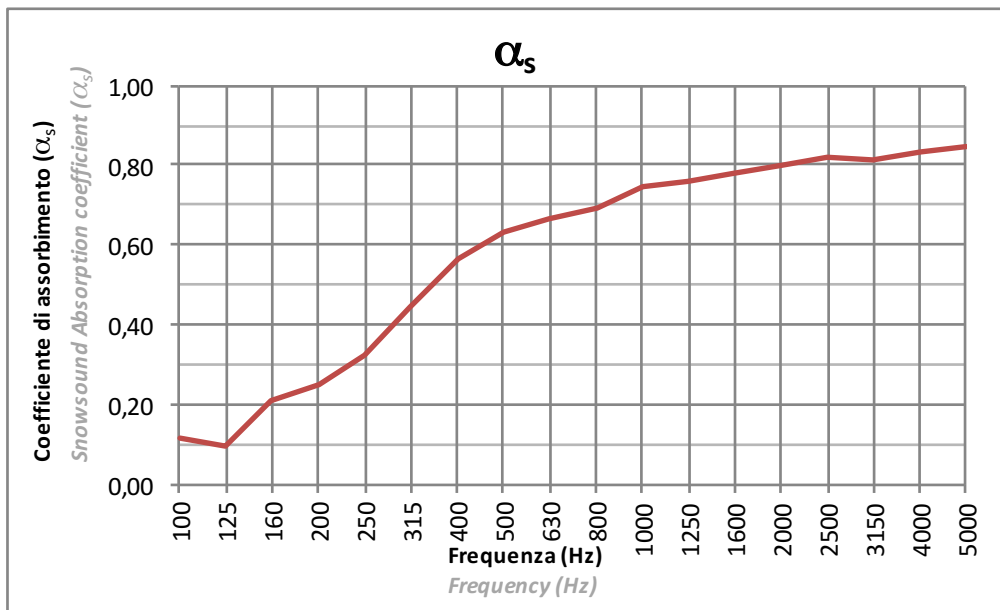
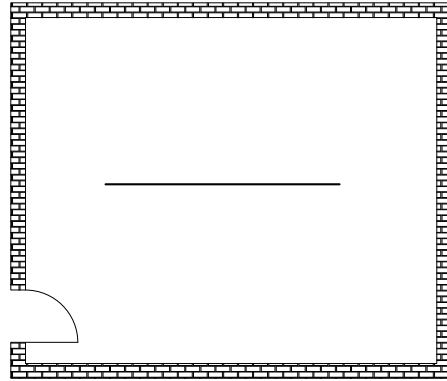


La prova è stata eseguita secondo le prescrizioni della norma UNI EN ISO 354
Test executed according to UNI EN ISO 354

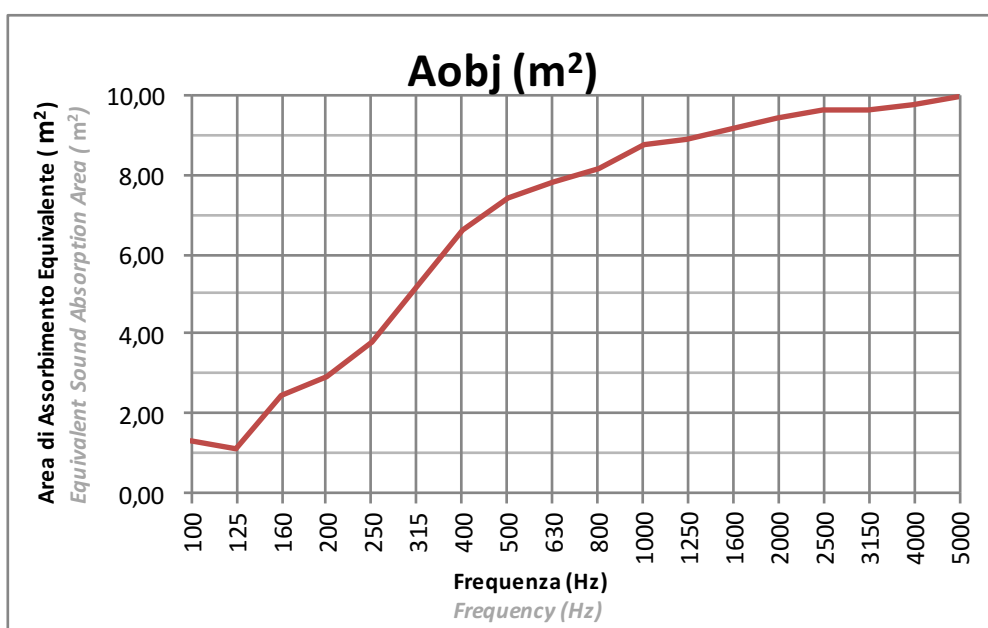
SNOWSOUND-FIBER 3

Tessuto: PLANARE
Fabric: FLAT

Installazione: CENTRO STANZA
Installation: CENTER OF THE ROOM



Procedura Sperimentale
Experimental Procedure

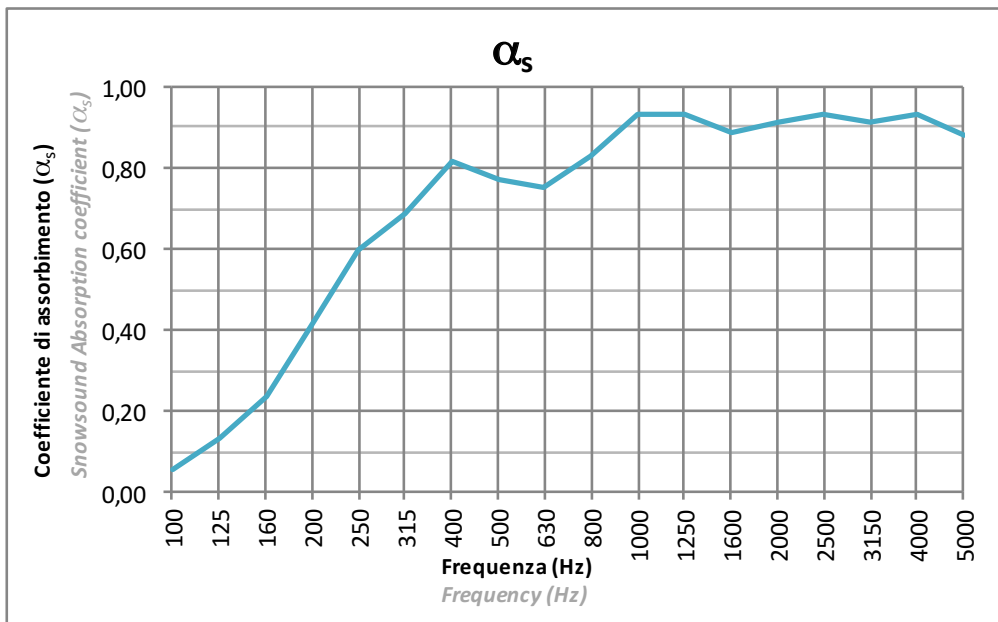
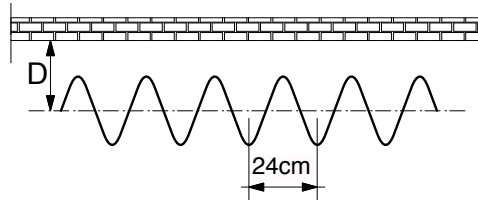


La prova è stata eseguita secondo le prescrizioni della norma UNI EN ISO 354
Test executed according to UNI EN ISO 354

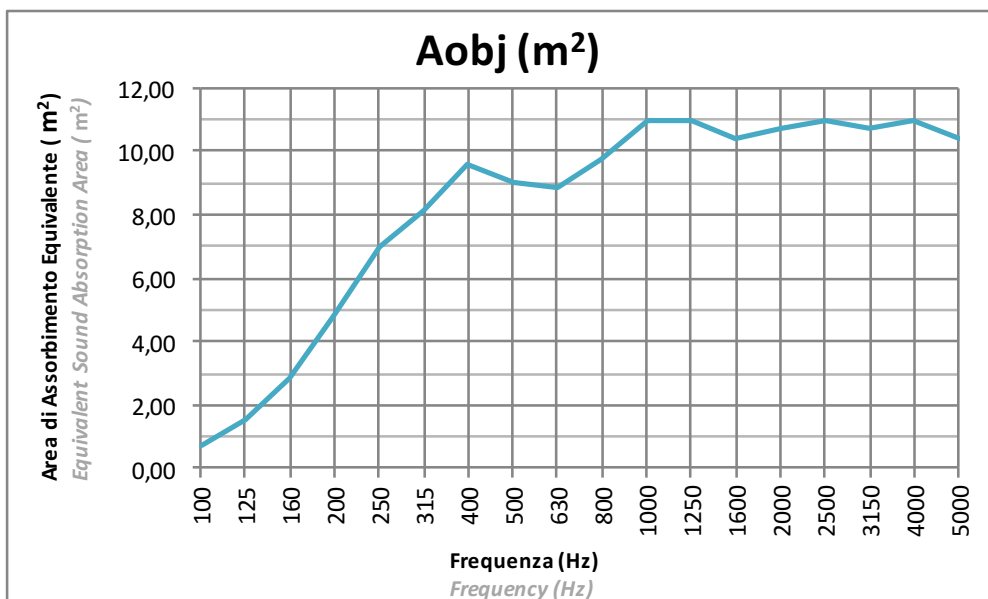
SNOWSOUND-FIBER 3

Tessuto: ONDULATO a passo 24cm
Fabric: WAVY (24cm pace)

Installazione: Distanza dall'asse da parete 20cm (D=20cm)
Installation: Wall to axis distance 20cm (D=20cm)



La prova è stata eseguita secondo le prescrizioni della norma UNI EN ISO 354
Test executed according to UNI EN ISO 354

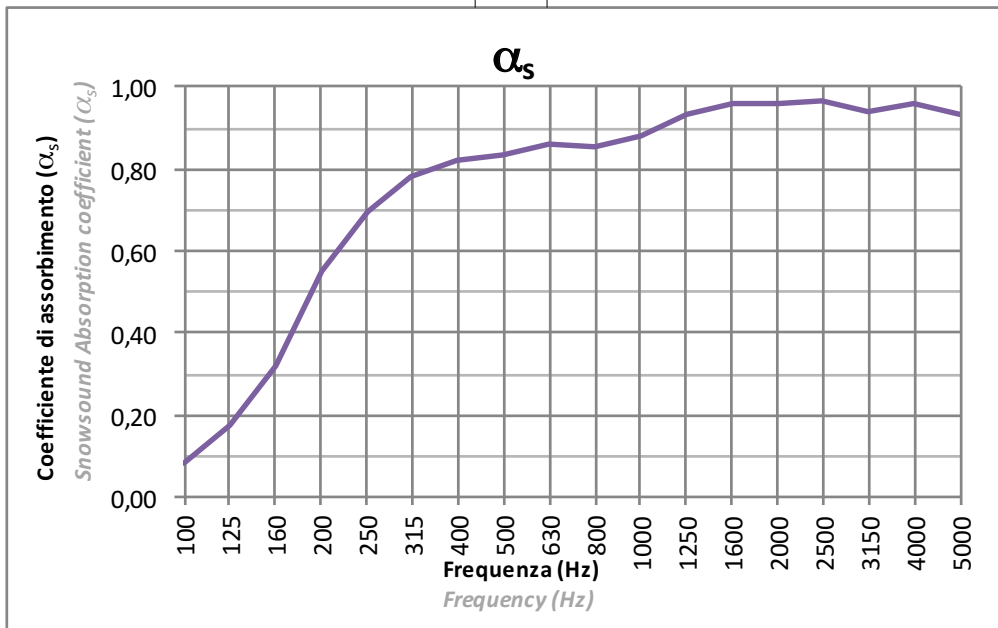
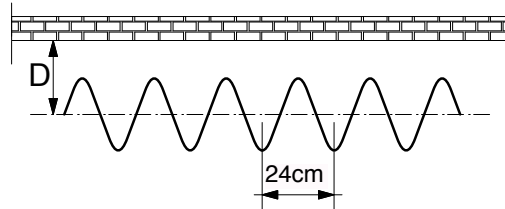


La prova è stata eseguita secondo le prescrizioni della norma UNI EN ISO 354
Test executed according to UNI EN ISO 354

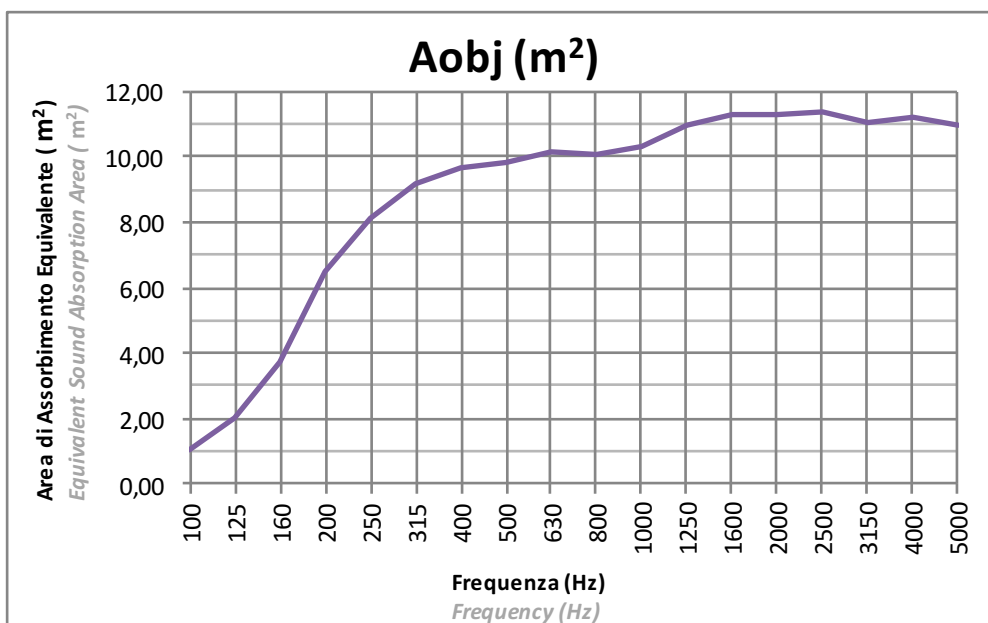
SNOWSOUND-FIBER 3

Tessuto: ONDULATO a passo 24cm
Fabric: WAVY (24cm pace)

Installazione: Distanza dall'asse da parete 30cm (D=30cm)
Installation: Wall to axis distance 30cm (D=30cm)



La prova è stata eseguita secondo le prescrizioni della norma UNI EN ISO 354
Test executed according to UNI EN ISO 354

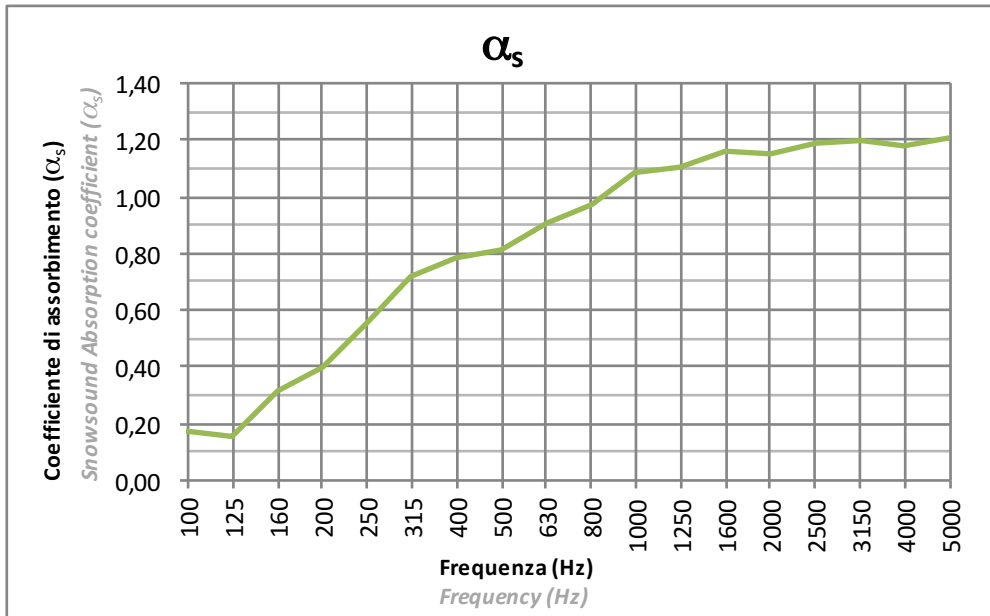
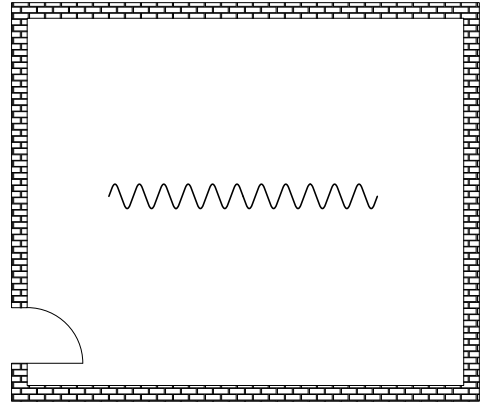
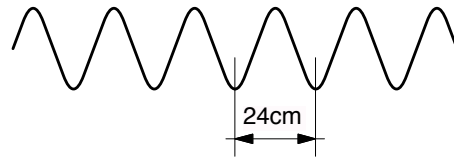


La prova è stata eseguita secondo le prescrizioni della norma UNI EN ISO 354
Test executed according to UNI EN ISO 354

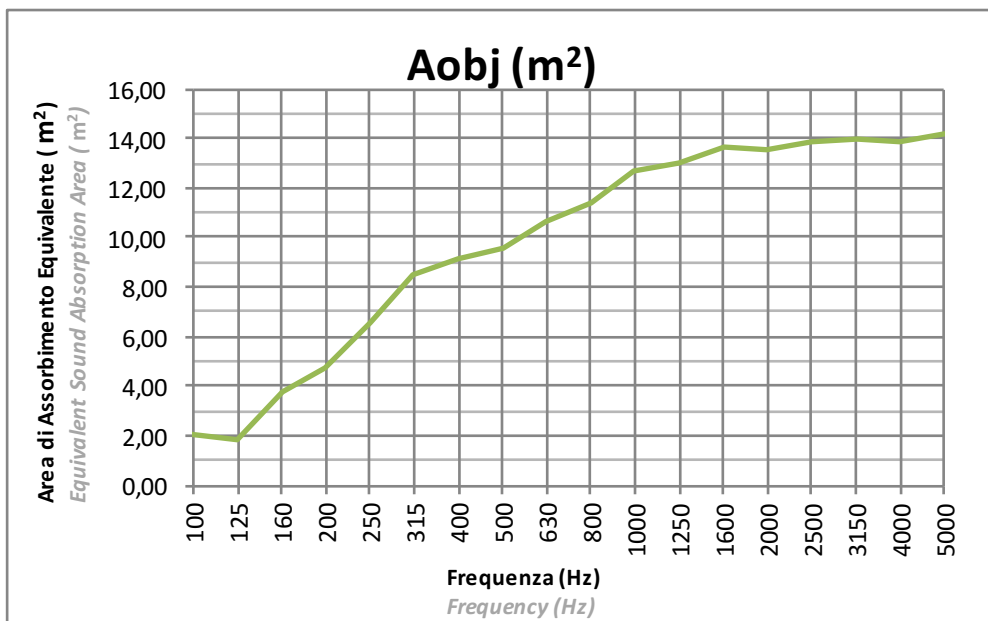
SNOWSOUND-FIBER 3

Tessuto: ONDULATO a passo 24cm
Fabric: WAVY (24cm pace)

Installazione: CENTRO STANZA
Installation: CENTER OF THE ROOM



Procedura Sperimentale
Experimental Procedure



La prova è stata eseguita secondo le prescrizioni della norma UNI EN ISO 354
Test executed according to UNI EN ISO 354