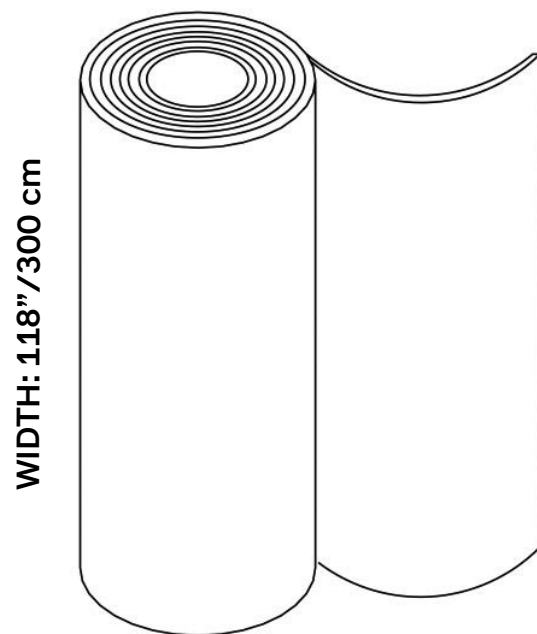


# FIBER 2R LINE-R



# FIBER 2R LINE-R



SNOWSOUND

## PHYSICAL PROPERTIES

Content	100% Fire Resistant, Acoustic Sound Absorbing Polyester Fibers with Patented Snowsound Technology
Backing	Unbacked
Width	118" // 300 cm (tolerance + 0 – 3 cm)
Weight	6.5 oz per square yard / 10.7 oz per linear yard
Thickness	0.6 mm

## ACOUSTIC PERFORMANCE & NOISE REDUCTION RATING

Absorption Coefficient & NRC	Sound Absorption rating per ISO 11654 with NRC up to .60 achievable depending on installation. Please refer to on-line technical sheets for details.
------------------------------	------------------------------------------------------------------------------------------------------------------------------------------------------

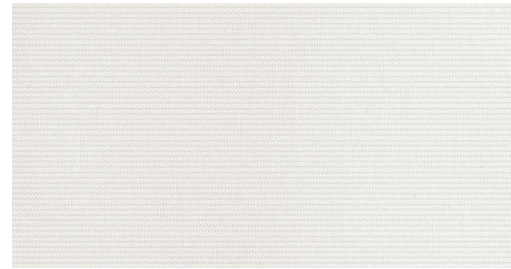
## PERFORMANCE

Flame Resistance	Passes NFPA 701 // NFPA 260 // CAL. TB 117 // UL 723 Class A // ASTM E 84 Class A
Environment	100% Recyclable and GREENGUARD GOLD Certified
Thermal & Visual Comfort	Data available according to standard ISO 14501:2006 – Solar Transmittance / Light Transmittance / UV Transmittance / Solar Reflectance / Light Reflectance / Solar Absorption / Light Absorption / Glare Control / Night Privacy / Visual Contact with the outside / Daylight Utilization / Light Transmittance (openness factor) / Solar Factor / Secondary Heat Transfer / Solar Transmittance / Shading Coefficient
Washing & Maintenance	Avoid machine washing. Maintenance allows for spot cleaning and stain removal.

# FIBER 2R LINE-R SWATCHES

## SPECS

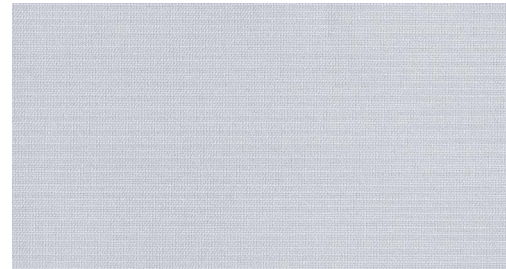
Rolls	27.3yd/25m	8.7yd/8m
-------	------------	----------



**Natural White**

27.3 yd    7F2R.3-25-200

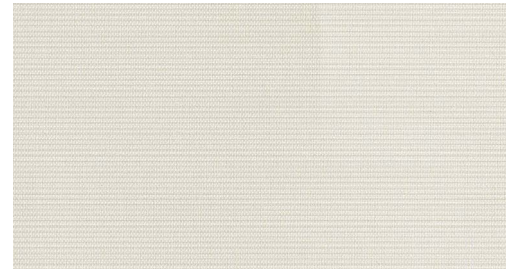
8.7 yd    7F2R.3-8-200



**Ice Gray**

27.3 yd    7F2R.3-25-202

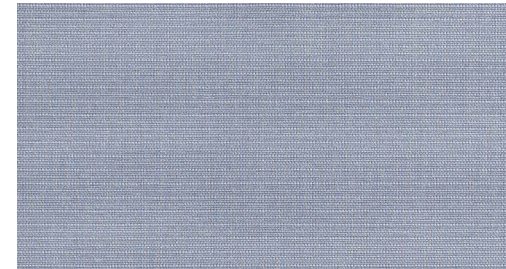
8.7 yd    7F2R.3-8-202



**Cream**

27.3 yd    7F2R.3-25-201

8.7 yd    7F2R.3-8-201



**Medium Gray**

27.3 yd    7F2R.3-25-203

8.7 yd    7F2R.3-8-203

Custom length rolls between 8.7 yards and 27.3 yards are available on request with extended lead time and cutting fee.  
Please contact your local representative for information.

# SNOWSOUND-FIBER 2R

Confort termico e visivo di tende secondo la norma UNI EN 14501:2006  
**Thermal and visual comfort of blinds according to standard UNI EN 14501:2006**

CONFORT VISIVO - <i>VISUAL COMFORT</i>							
Codice Code	Fattore di trasmissione solare diretta <i>Solar transmittance</i>	Fattore di trasmissione luminosa <i>Light transmittance</i>	Fattore di trasmissione UV <i>UV transmittance</i>	Fattore di riflessione solare <i>Solar reflectance</i>	Fattore di riflessione luminosa <i>Light reflectance</i>	Fattore di assorbimento solare <i>Solar absorption</i>	Fattore di assorbimento luminoso <i>Light absorption</i>
<b>7F2R-200</b>	<b>36%</b>	<b>37%</b>	<b>12%</b>	<b>55%</b>	<b>58%</b>	<b>8,3%</b>	<b>4,7%</b>
<b>7F2R-201</b>	<b>35%</b>	<b>32%</b>	<b>11%</b>	<b>51%</b>	<b>51%</b>	<b>14%</b>	<b>17%</b>
<b>7F2R-202</b>	<b>32%</b>	<b>25%</b>	<b>10%</b>	<b>47%</b>	<b>43%</b>	<b>20%</b>	<b>32%</b>
<b>7F2R-203</b>	<b>27%</b>	<b>14%</b>	<b>6,90%</b>	<b>39%</b>	<b>26%</b>	<b>34%</b>	<b>61%</b>

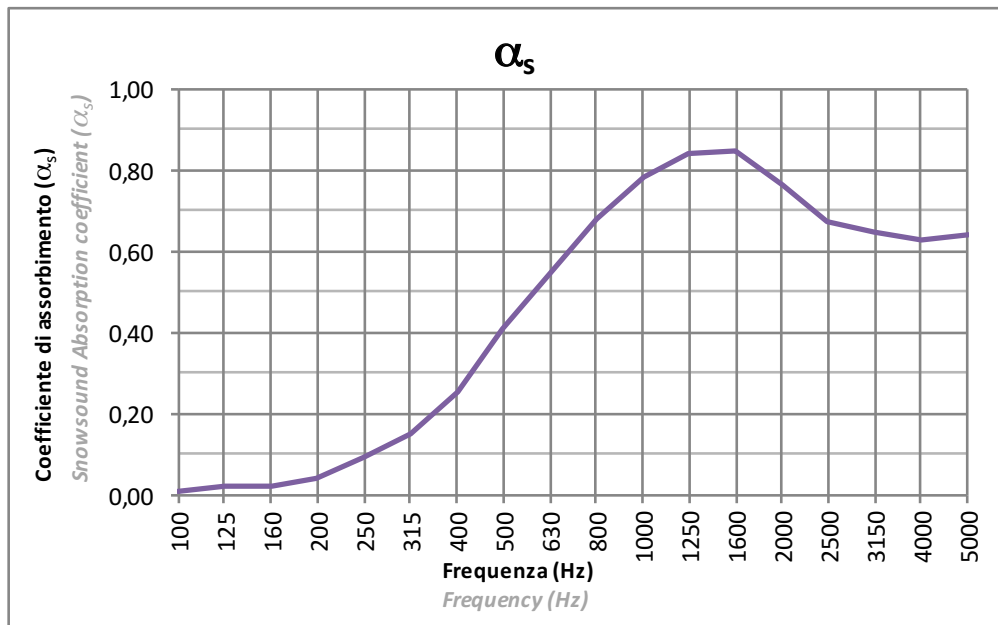
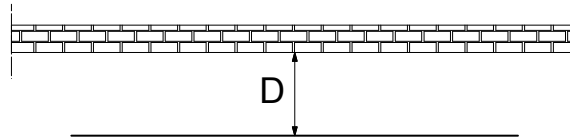
CONFORT VISIVO - <i>VISUAL COMFORT</i>					
Codice Code	Controllo del bagliore <i>Glare control</i>	Privacy notturna <i>Night privacy</i>	Contatto visivo con l'esterno <i>Visual contact with the outside</i>	Utilizzazione luce diurna <i>Daylight utilisation</i>	Fattore di trasmissione luminosa (apertura) <i>Light transmittance (openness factor)</i>
<b>7F2R-200</b>	<b>1</b>	<b>2</b>	<b>0</b>	<b>3</b>	<b>0,86%</b>
<b>7F2R-201</b>	<b>1</b>	<b>2</b>	<b>0</b>	<b>3</b>	<b>1,60%</b>
<b>7F2R-202</b>	<b>1</b>	<b>2</b>	<b>0</b>	<b>2</b>	<b>2,00%</b>
<b>7F2R-203</b>	<b>1</b>	<b>2</b>	<b>1</b>	<b>2</b>	<b>2,20%</b>

CONFORT TERMICO - <i>THERMAL COMFORT</i>									
Codice Code	Fattore solare totale $g_{tot}$ <i>Solar factor <math>g_{tot}</math></i>		Fattore di trasferimento secondario del calore $q_{i,tot}$ <i>Secondary heat transfer factor <math>q_{i,tot}</math></i>		Fattore di trasferimento solare diretto $\tau_{e,tot}$ <i>Solar transmittance <math>\tau_{e,tot}</math></i>		Fattore di schermatura solare $F_c$ <i>Shading coefficient <math>F_c</math></i>		
	Interno al vetro Vetrata D (32%) <i>Internal to the glazing Glazing D (32%)</i>	Integrato nel vetro Vetrata C (59%) <i>Integrated to the glazing Glazing C (59%)</i>	Interno al vetro Vetrata D (32%) <i>Internal to the glazing Glazing D (32%)</i>	Integrato nel vetro Vetrata C (59%) <i>Integrated to the glazing Glazing C (59%)</i>	Interno al vetro Vetrata D (32%) <i>Internal to the glazing Glazing D (32%)</i>	Integrato nel vetro Vetrata C (59%) <i>Integrated to the glazing Glazing C (59%)</i>	Interno al vetro Vetrata D (32%) <i>Internal to the glazing Glazing D (32%)</i>	Integrato nel vetro Vetrata C (59%) <i>Integrated to the glazing Glazing C (59%)</i>	
<b>7F2R-200</b>	<b>26%</b> classe/class 2	<b>27%</b> classe/class 2	<b>14%</b> classe/class 2	<b>4,6%</b> classe/class 3	<b>12%</b>	<b>22%</b>	<b>82%</b>	<b>45%</b>	
<b>7F2R-201</b>	<b>27%</b> classe/class 2	<b>26%</b> classe/class 2	<b>15%</b> classe/class 2	<b>5,8%</b> classe/class 3	<b>12%</b>	<b>21%</b>	<b>83%</b>	<b>45%</b>	
<b>7F2R-202</b>	<b>27%</b> classe/class 2	<b>26%</b> classe/class 2	<b>16%</b> classe/class 2	<b>6,9%</b> classe/class 3	<b>11%</b>	<b>19%</b>	<b>84%</b>	<b>44%</b>	
<b>7F2R-203</b>	<b>28%</b> classe/class 2	<b>24%</b> classe/class 2	<b>19%</b> classe/class 2	<b>9,2%</b> classe/class 3	<b>8,5%</b>	<b>15%</b>	<b>86%</b>	<b>41%</b>	

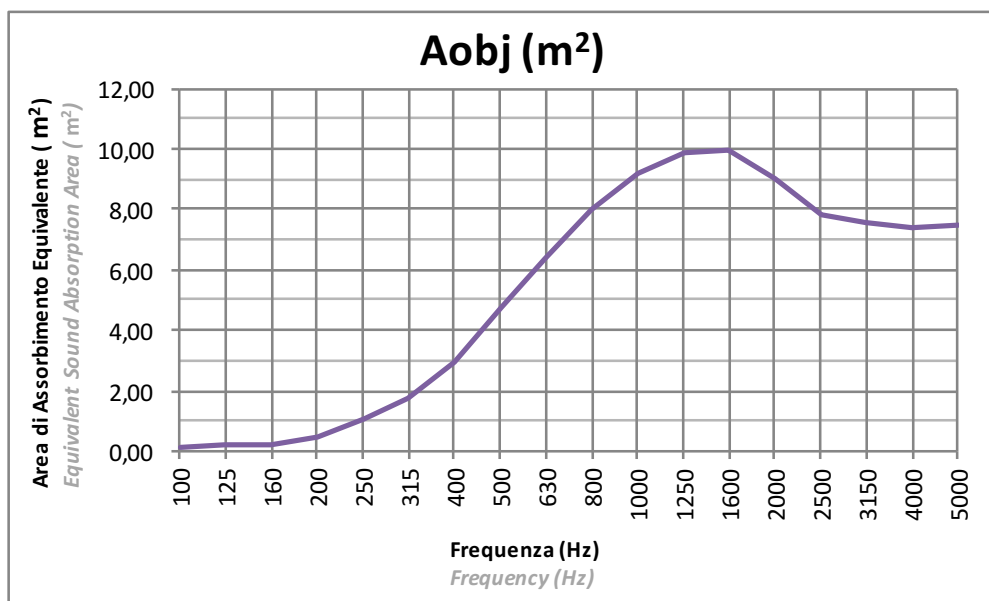
# SNOWSOUND-FIBER 2R

Tessuto: PLANARE  
Fabric: FLAT

Installazione: Distanza da parete 5cm (D=5cm)  
Installation: Distance from the wall 5cm (D=5cm)



La prova è stata eseguita secondo le prescrizioni della norma UNI EN ISO 354  
Test executed according to UNI EN ISO 354

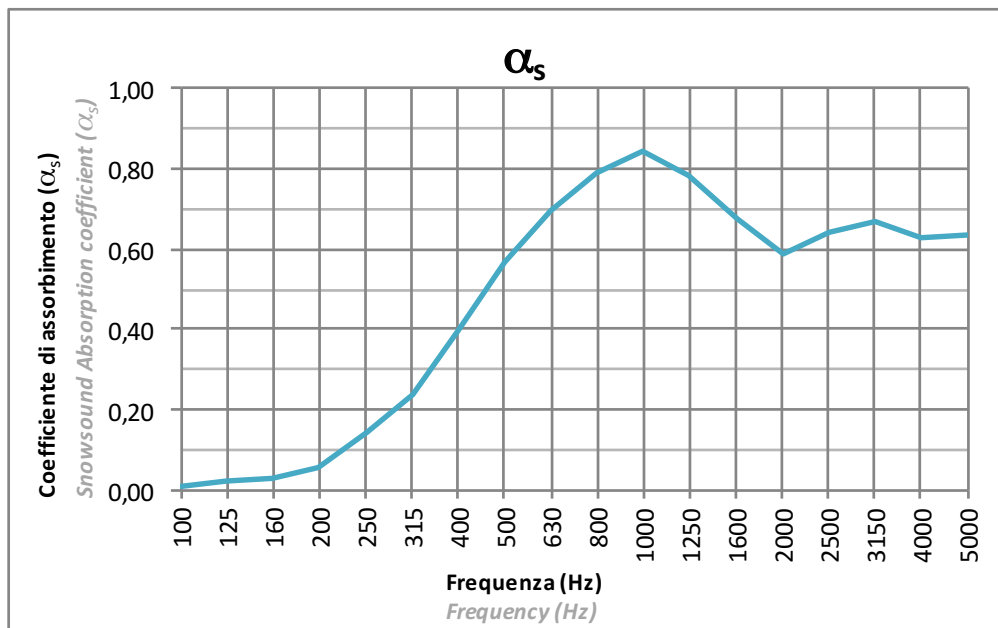
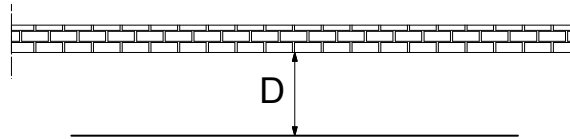


La prova è stata eseguita secondo le prescrizioni della norma UNI EN ISO 354  
Test executed according to UNI EN ISO 354

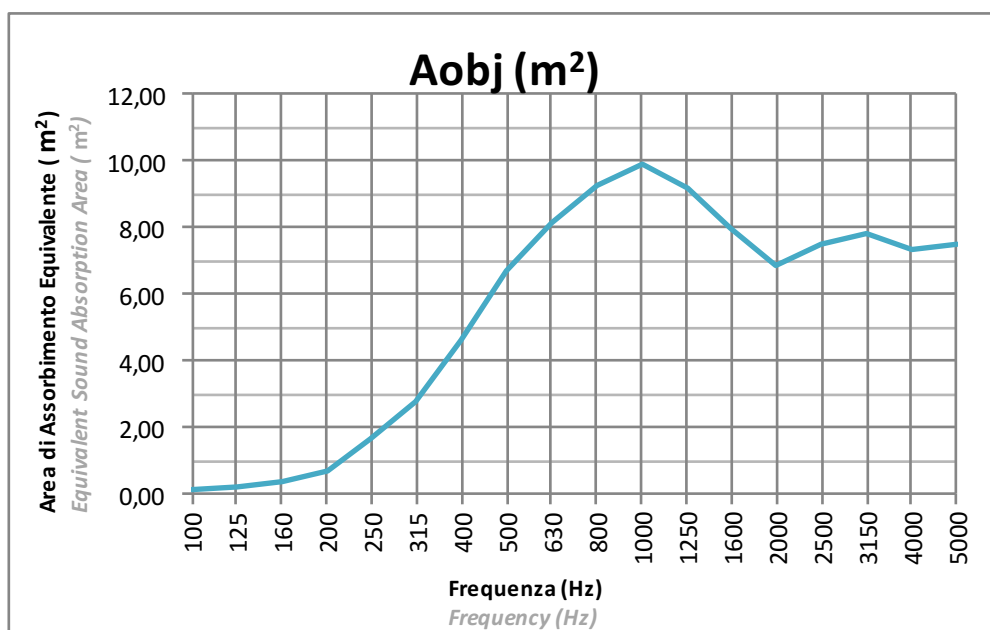
# SNOWSOUND-FIBER 2R

Tessuto: PLANARE  
Fabric: FLAT

Installazione: Distanza da parete 10cm (D=10cm)  
Installation: Distance from the wall 10cm (D=10cm)



La prova è stata eseguita secondo le prescrizioni della norma UNI EN ISO 354  
Test executed according to UNI EN ISO 354

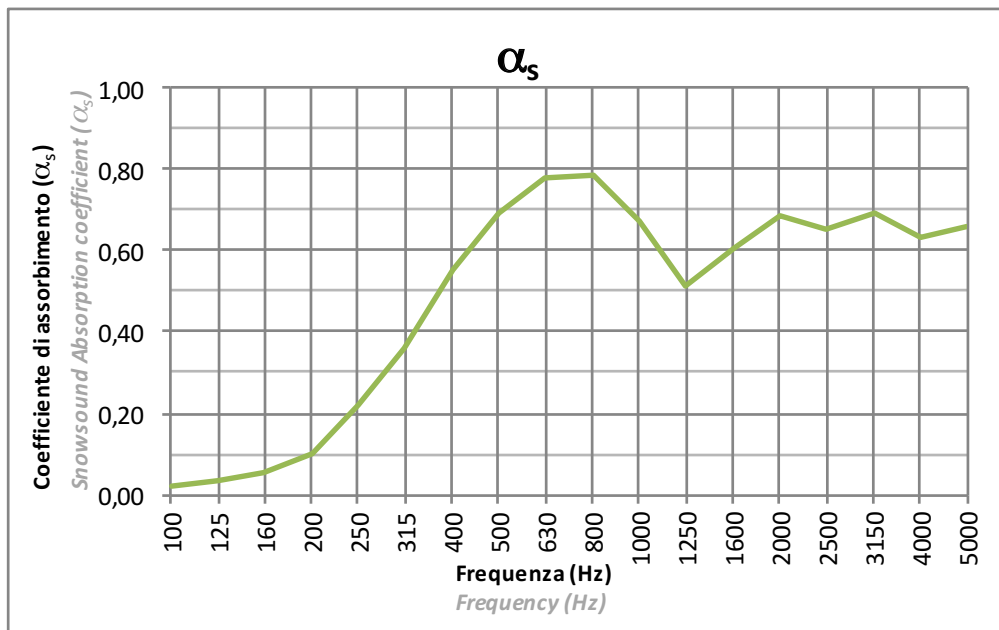
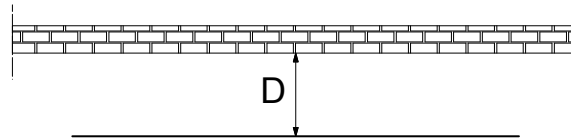


La prova è stata eseguita secondo le prescrizioni della norma UNI EN ISO 354  
Test executed according to UNI EN ISO 354

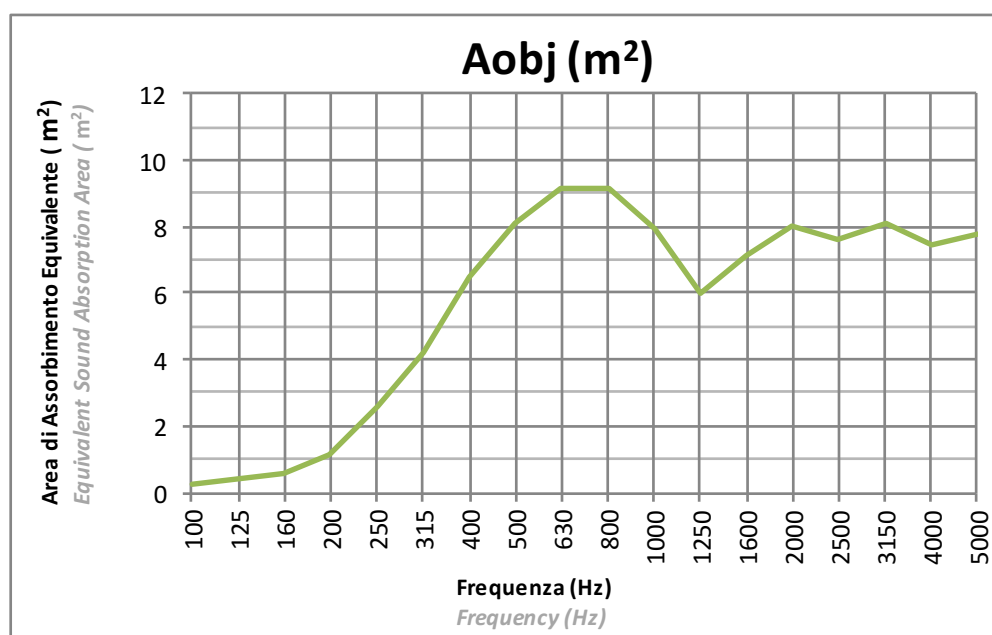
# SNOWSOUND-FIBER 2R

Tessuto: PLANARE  
Fabric: FLAT

Installazione: Distanza da parete 15cm (D=15cm)  
Installation: Distance from the wall 15cm (D=15cm)



La prova è stata eseguita secondo le prescrizioni della norma UNI EN ISO 354  
Test executed according to UNI EN ISO 354



La prova è stata eseguita secondo le prescrizioni della norma UNI EN ISO 354  
Test executed according to UNI EN ISO 354