

# FIBER 1 COLOR





# FIBER 1 COLOR

The ONE Fabric for Healthcare that’s good for you. The industry’s only sound-absorbing textile on the market with patented technology that is permanently fire resistant and antimicrobial. The silver ion in the polymer inhibits the growth of bacteria spreading in and on the fiber, keeps textiles fresher for longer, and provides the industry’s best acoustic performance.

## PHYSICAL PROPERTIES

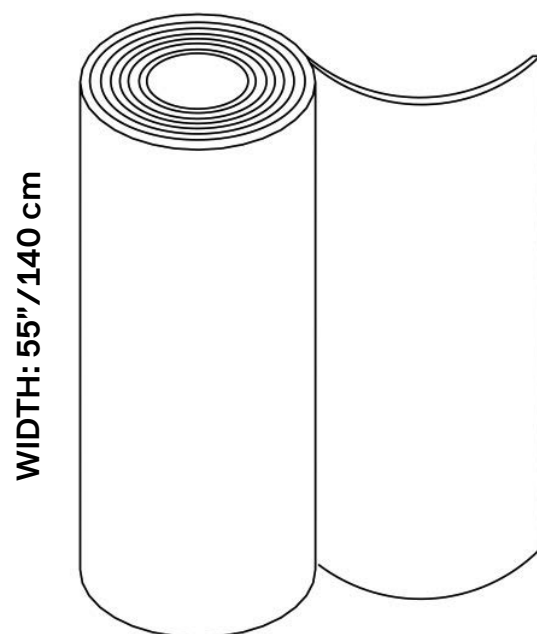
Content	100% Fire Resistant, Acoustic Sound Absorbing Polyester Fibers with Patented Snowsound Technology
Backing	Unbacked
Width	55" // 140 cm (tolerance + 0 – 3 cm)
Weight	15.0 oz per square yard / 23 oz per linear yard
Thickness	1.5 mm

## ACOUSTIC PERFORMANCE & NOISE REDUCTION RATING

Absorption Coefficient & NRC	Class A Sound Absorption per ISO 11654 with NRC 1.0 achievable depending on installation. Please refer to on-line technical sheets for details.
------------------------------	---

## PERFORMANCE

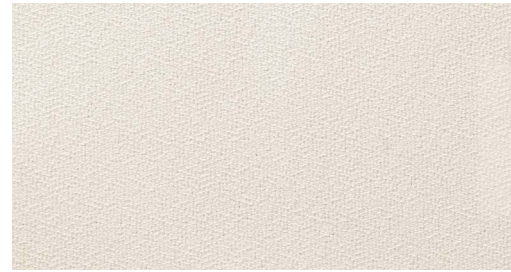
Flame Resistance	Passes NFPA 701 // NFPA 260 // CAL. TB 117 // UL 723 Class A // ASTM E 84 Class A
Environment	100% Recyclable and GREENGUARD GOLD Certified
Abrasion Resistance	30,000 rubs / cycles (tested according to Martindale Method)
Colorfastness to Light	Grade 7 – “Outstanding” (Passes AATCC 16 / ISO 105-B02:2014)
Colorfastness to Crocking	Wet – Grade 5. Dry – Grade 4/5. (Passes AATCC 8 / ISO 105-X12: 2016)
Propensity to Surface Fuzzing & Pilling	Grade 5 – “no change” (Passes ISO 12945-2:2002)
Washing & Maintenance	Normal machine washing up to 86 degrees Fahrenheit. Ironing on low heat acceptable. Dry cleaning is acceptable (any solvent except Trichloroethylene). Do not tumble dry.



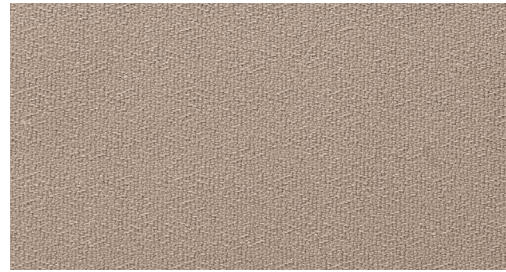
# FIBER 1 COLOR SWATCHES

## PRICE LIST

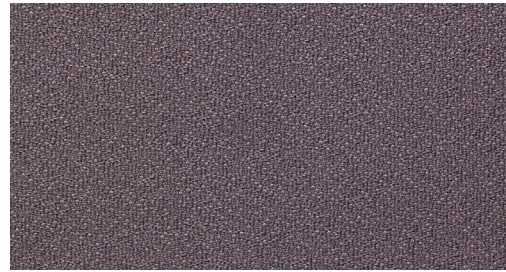
Rolls	27.3yd/25m	8.7yd/8m
-------	------------	----------



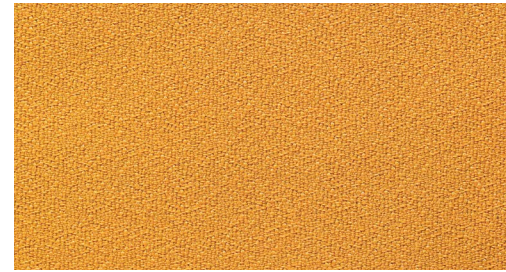
**White**  
 27.3 yd    7F1-25-0001  
 8.7 yd    7F1-8-0001



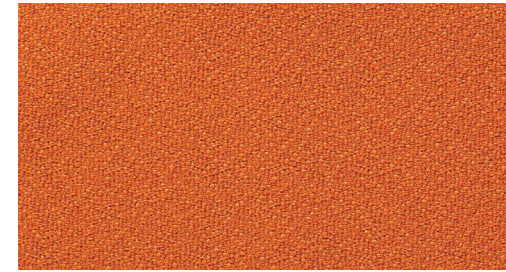
**Beige**  
 27.3 yd    7F1-25-1008  
 8.7 yd    7F1-8-1008



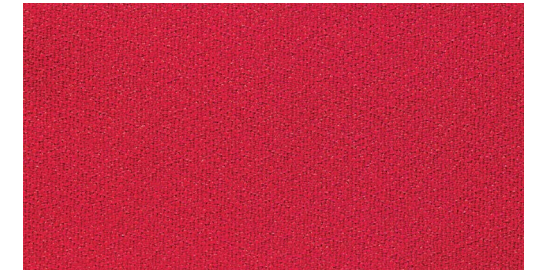
**Dove Gray**  
 27.3 yd    7F7-25-2005  
 8.7 yd    7F1-8-2005



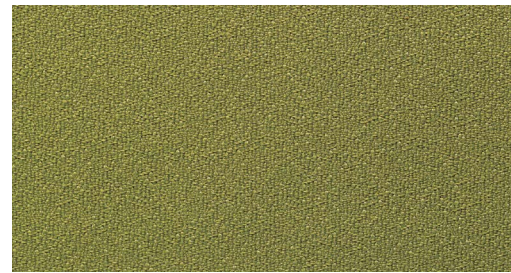
**Sun Yellow**  
 27.3 yd    7F1-25-3008  
 8.7 yd    7F1-8-3008



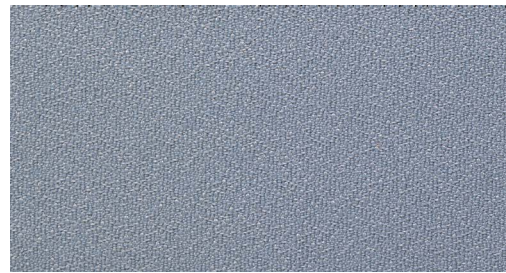
**Carrot Orange**  
 27.3 yd    7F1-25-4030  
 8.7 yd    7F1-8-4030



**Red**  
 27.3 yd    7F1-25-4027  
 8.7 yd    7F1-8-4027



**Olive Green**  
 27.3 yd    7F1-25-7004  
 8.7 yd    7F1-8-7004



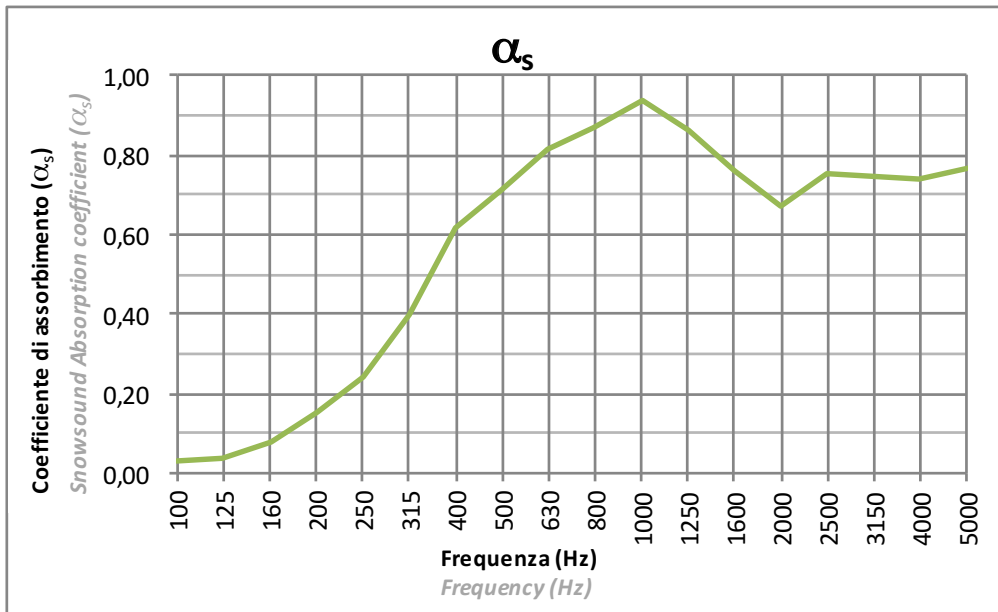
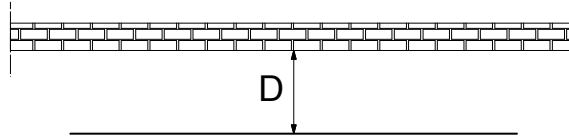
**Silver Gray**  
 27.3 yd    7F1-25-8004  
 8.7 yd    7F1-8-8004

Custom length rolls between 8.7 yards and 27.3 yards are available on request with extended lead time and cutting fee. Please contact your local representative for information.

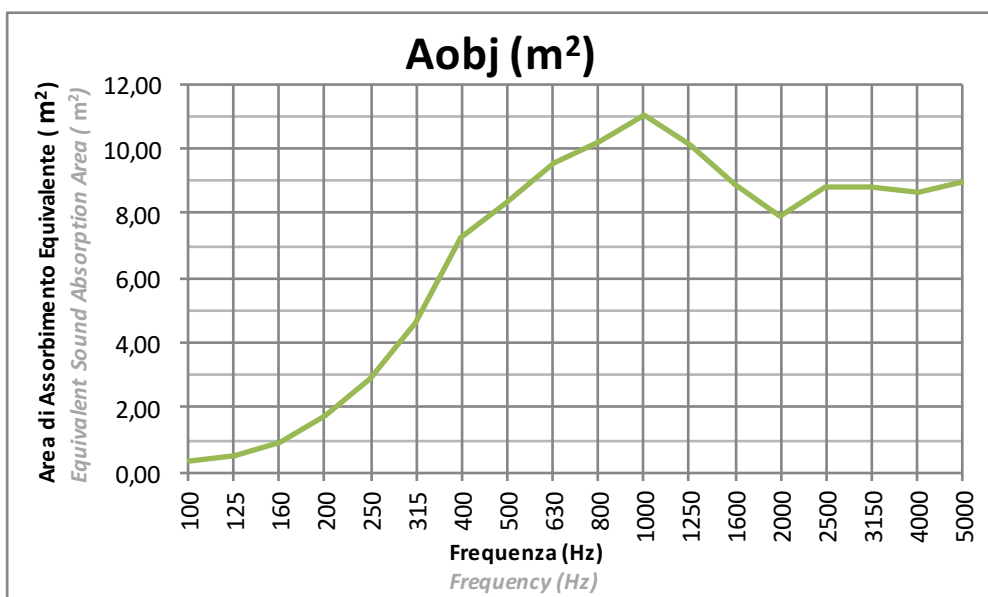
# SNOWSOUND-FIBER 1

Tessuto: PLANARE  
Fabric: FLAT

Installazione: Distanza da parete 10cm (D=10cm)  
Installation: Distance from the wall 10cm (D=10cm)



La prova è stata eseguita secondo le prescrizioni della norma UNI EN ISO 354  
Test executed according to UNI EN ISO 354

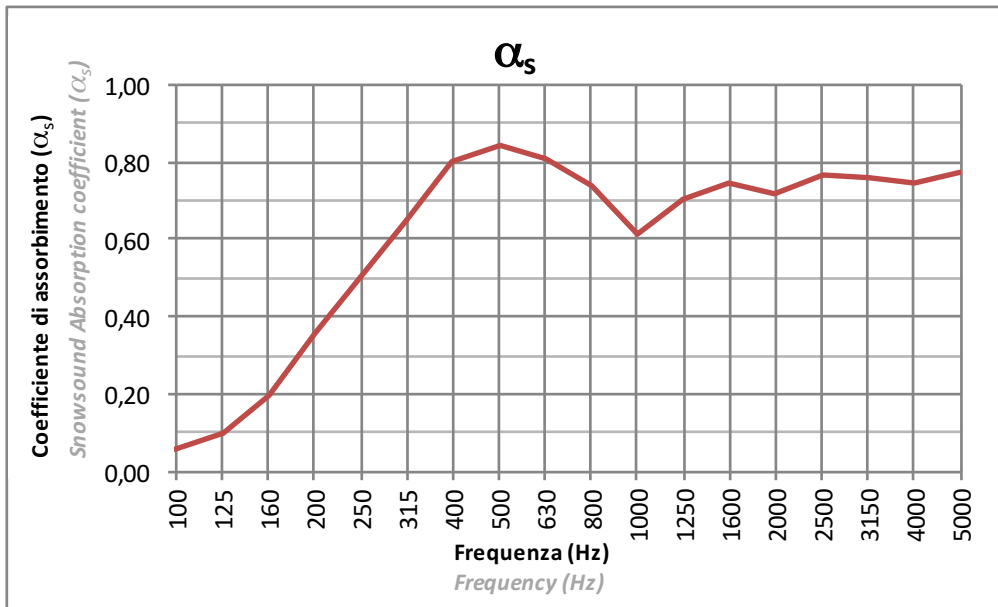
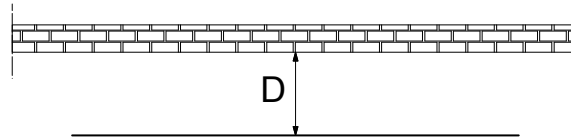


La prova è stata eseguita secondo le prescrizioni della norma UNI EN ISO 354  
Test executed according to UNI EN ISO 354

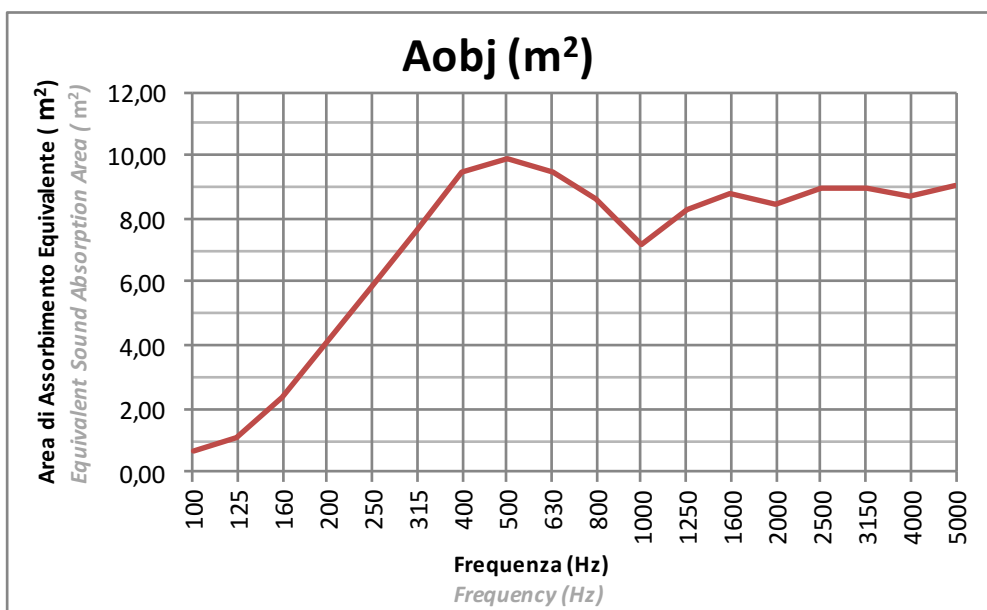
# SNOWSOUND-FIBER 1

Tessuto: PLANARE  
Fabric: FLAT

Installazione: Distanza da parete 20cm (D=20cm)  
Installation: Distance from the wall 20cm (D=20cm)



La prova è stata eseguita secondo le prescrizioni della norma UNI EN ISO 354  
Test executed according to UNI EN ISO 354

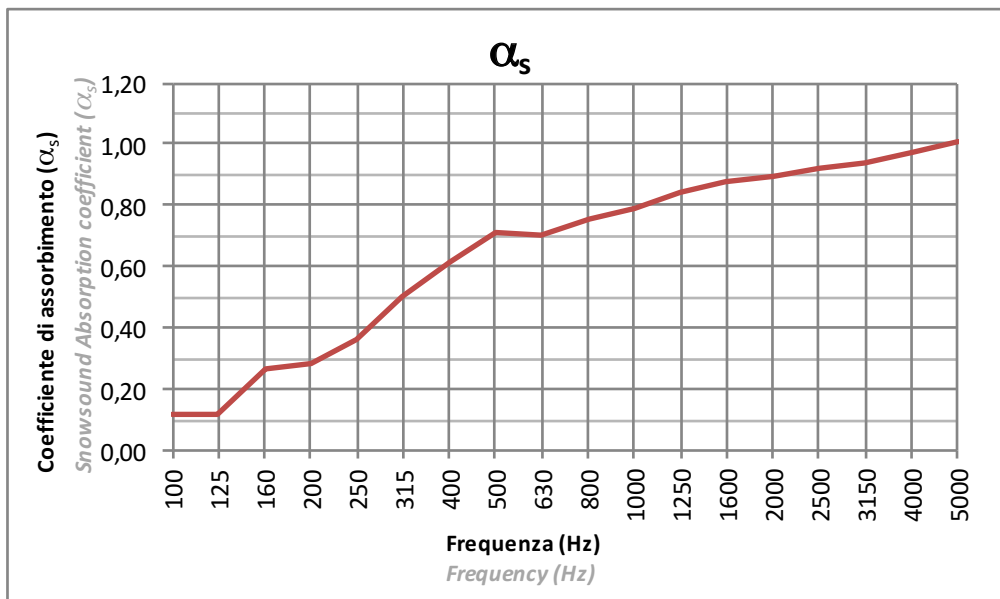
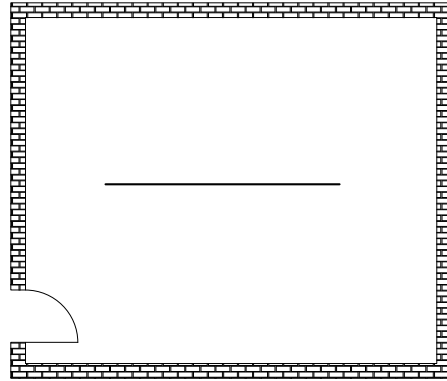


La prova è stata eseguita secondo le prescrizioni della norma UNI EN ISO 354  
Test executed according to UNI EN ISO 354

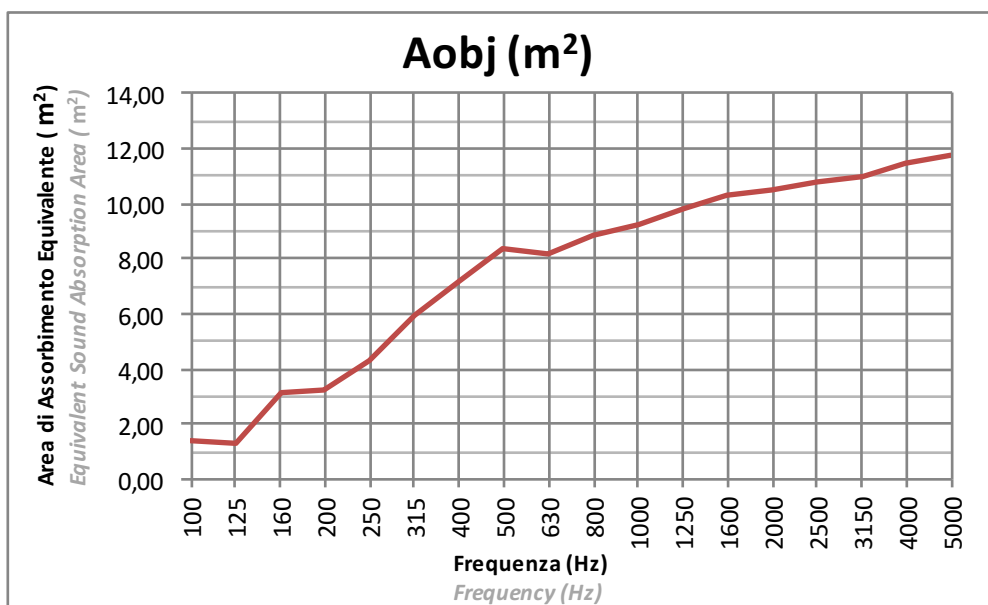
# SNOWSOUND-FIBER 1

Tessuto: PLANARE  
Fabric: FLAT

Installazione: CENTRO STANZA  
Installation: CENTER OF THE ROOM



Procedura Sperimentale  
Experimental Procedure

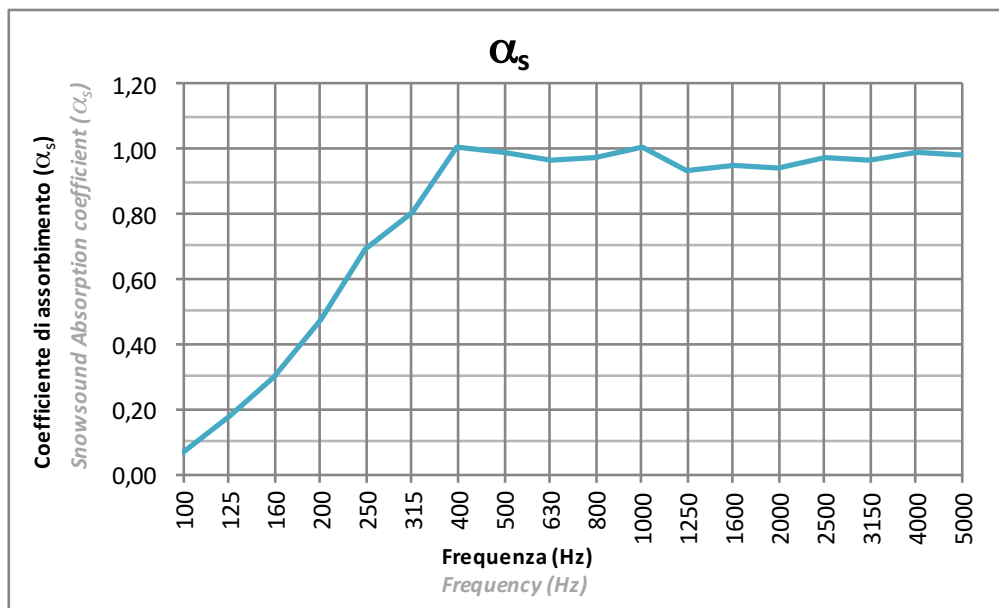
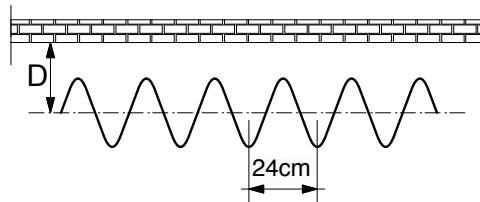


La prova è stata eseguita secondo le prescrizioni della norma UNI EN ISO 354  
Test executed according to UNI EN ISO 354

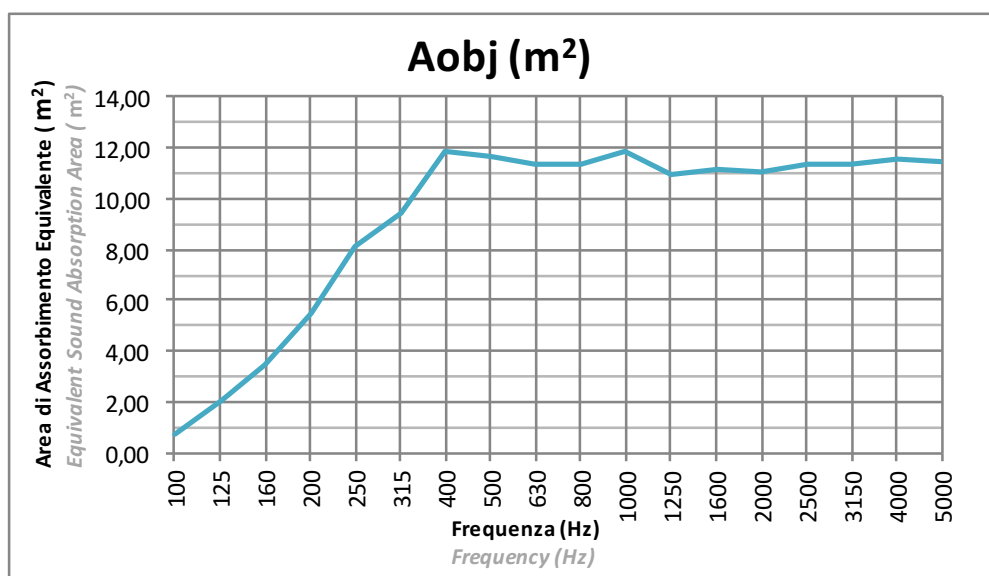
# SNOWSOUND-FIBER 1

Tessuto: ONDULATO a passo 24cm  
Fabric: WAVY (24cm pace)

Installazione: Distanza dall'asse da parete 20cm (D=20cm)  
Installation: Wall to axis distance 20cm (D=20cm)



La prova è stata eseguita secondo le prescrizioni della norma UNI EN ISO 354  
Test executed according to UNI EN ISO 354



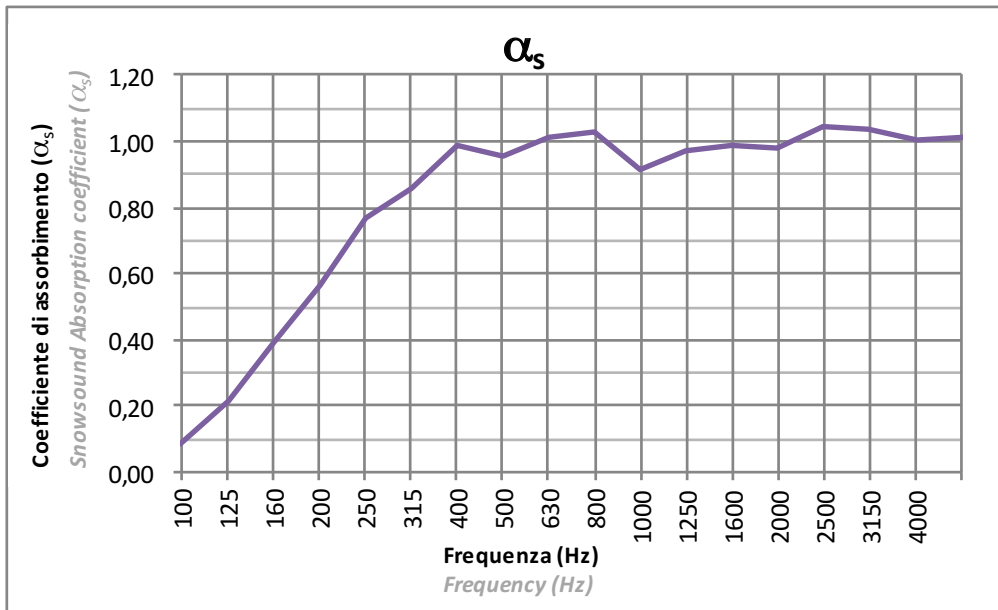
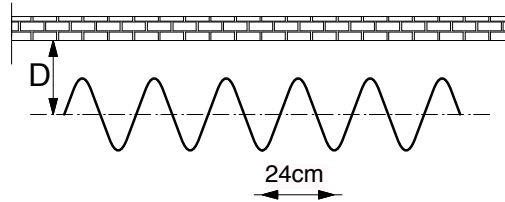
La prova è stata eseguita secondo le prescrizioni della norma UNI EN ISO 354  
Test executed according to UNI EN ISO 354



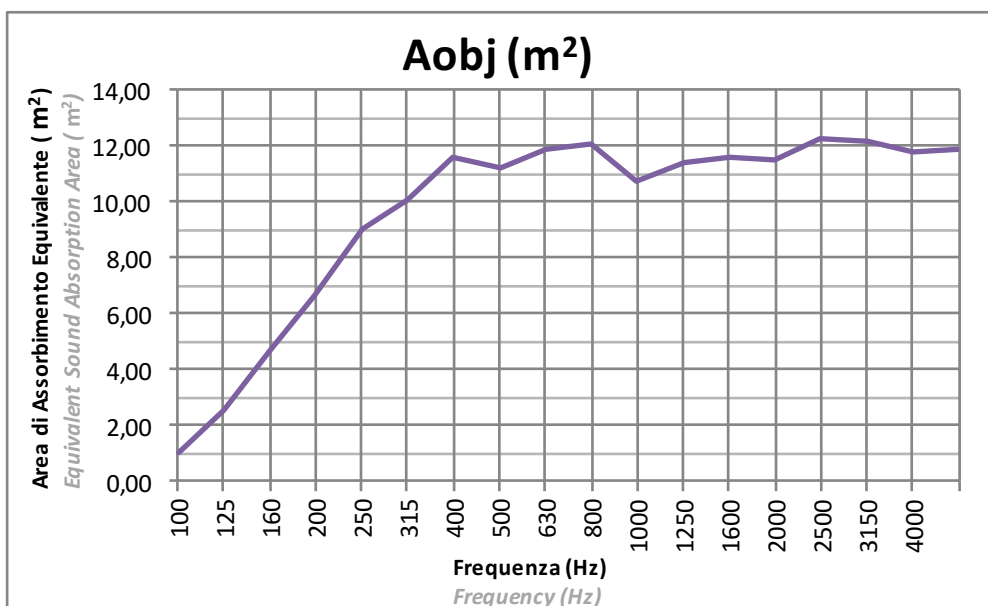
# SNOWSOUND-FIBER 1

Tessuto: ONDULATO a passo 24cm  
Fabric: WAVY (24cm pace)

Installazione: Distanza dall'asse da parete 30cm (D=30cm)  
Installation: Wall to axis distance 30cm (D=30cm)



La prova è stata eseguita secondo le prescrizioni della norma UNI EN ISO 354  
Test executed according to UNI EN ISO 354



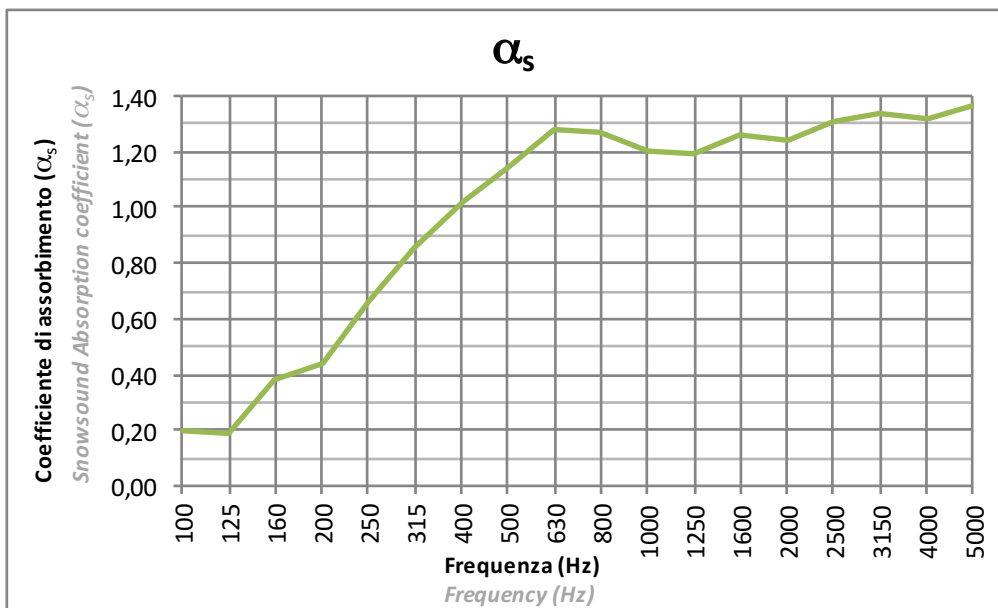
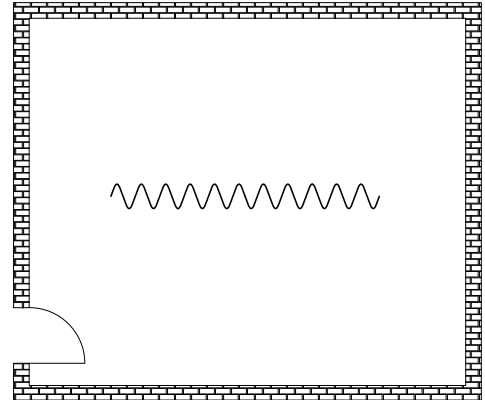
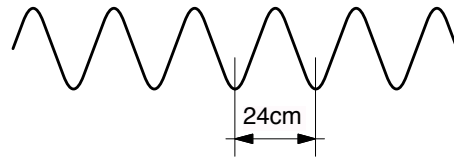
La prova è stata eseguita secondo le prescrizioni della norma UNI EN ISO 354  
Test executed according to UNI EN ISO 354



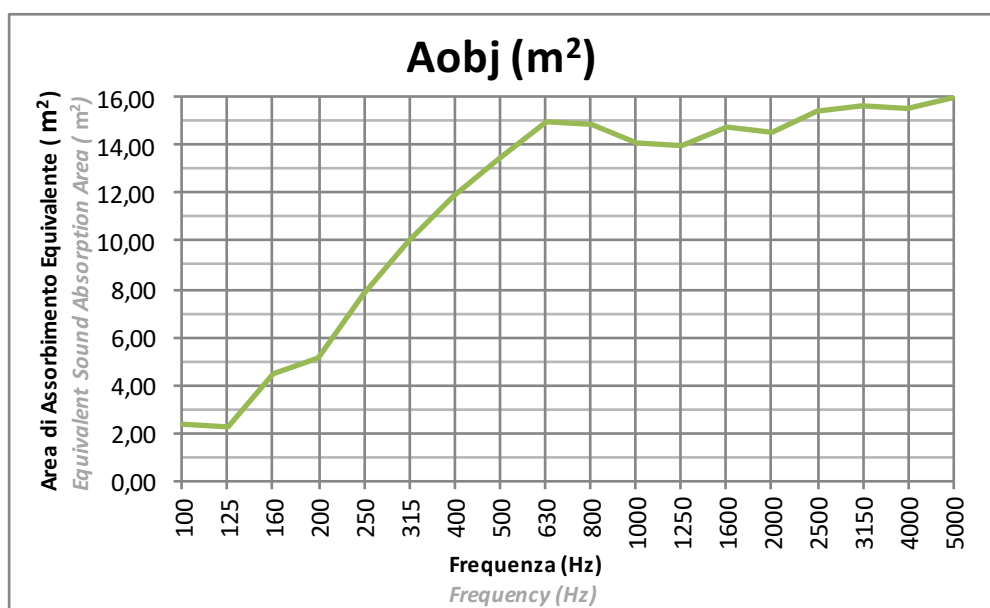
# SNOWSOUND-FIBER 1

Tessuto: ONDULATO a passo 24cm  
Fabric: WAVY (24cm pace)

Installazione: CENTRO STANZA  
Installation: CENTER OF THE ROOM



Procedura Sperimentale  
Experimental Procedure



La prova è stata eseguita secondo le prescrizioni della norma UNI EN ISO 354  
Test executed according to UNI EN ISO 354