



PROJECT INFORMATION

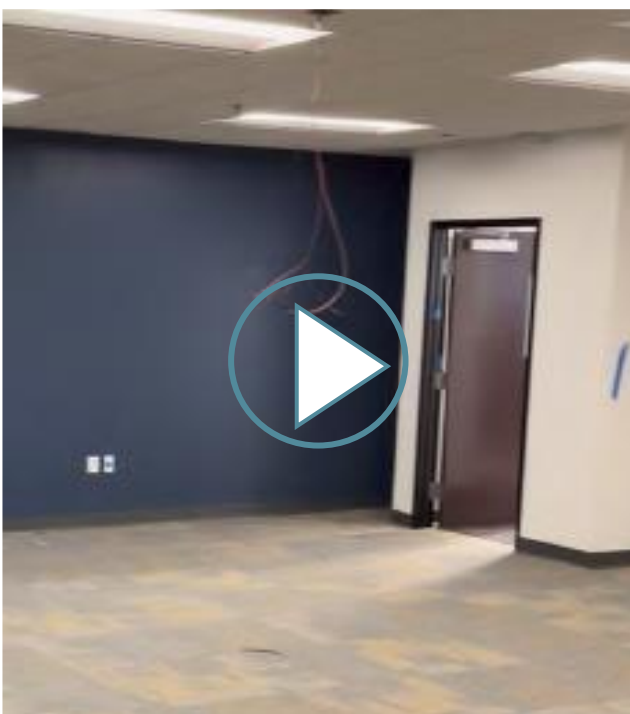
As the largest social service agency in the United States, L.A. County Department of Public Social Services serves over 10 million residents in L.A. county by providing programs and services geared towards improving the lives of L.A. residents.

Over 280 Mitesco panels were specified for 3 floors of rooms that were in need of acoustical treatment. The panels were installed on the wall and ceiling in a color combination meant to accentuate the aesthetics of the rooms. The panels were used to eliminate unwanted reverberation, reduce echo and to soften the sound for an acoustically comfortable training environment.

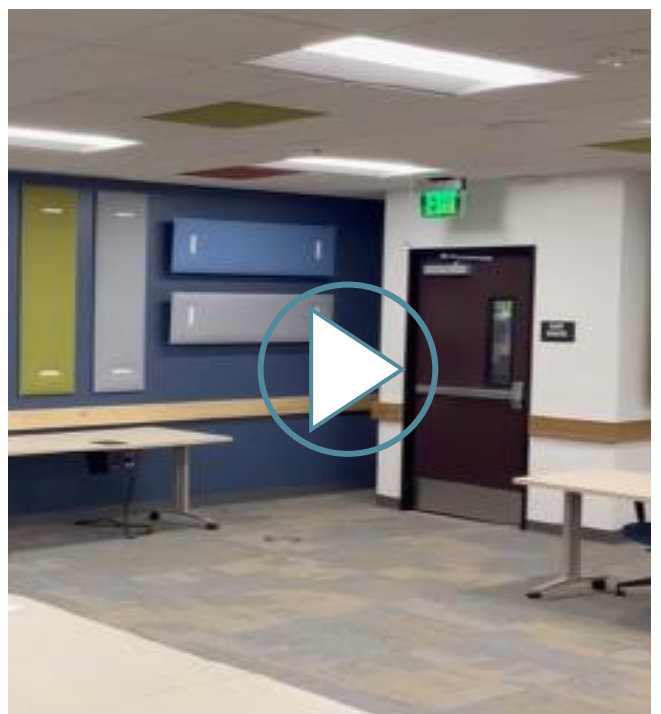
TESTIMONIAL & FEEDBACK

The echo and reflections were drastically reduced when compared to pre-installation conditions. There no longer felt the need to raise one's voice to compensate for the reverberation. Voices sounded much softer after the Snowsound panels were installed.

HEAR THE DIFFERENCE

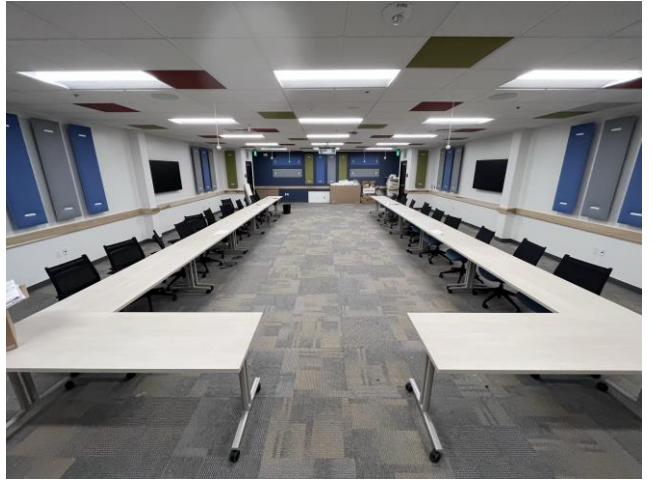


PRE-INSTALL / without SNOWSOUND



POST-INSTALL / with SNOWSOUND

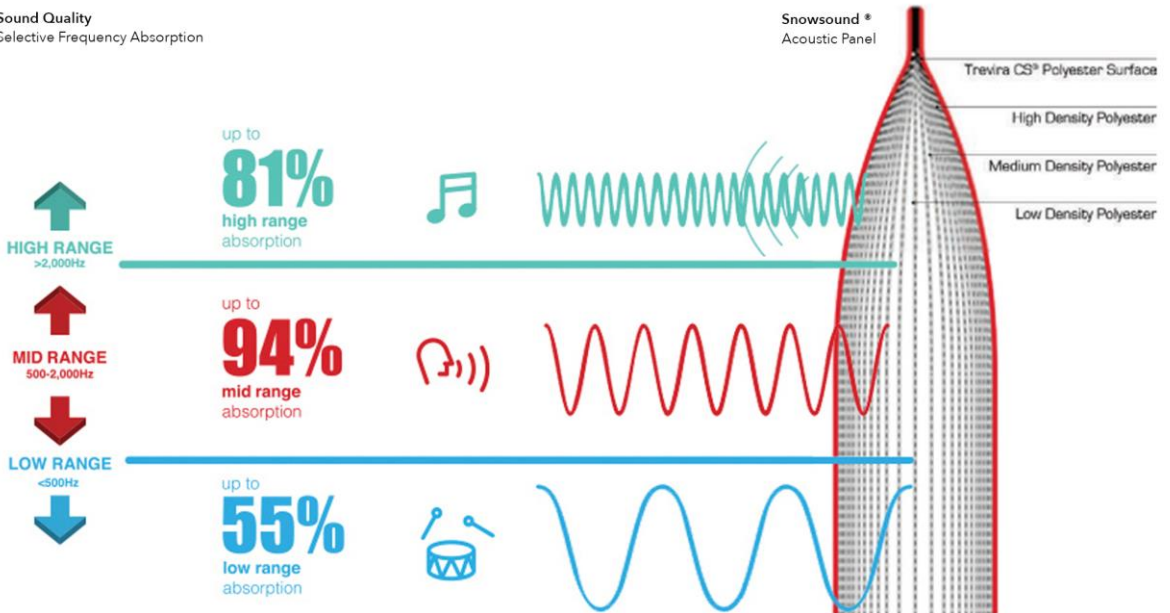
PROJECT IMAGES



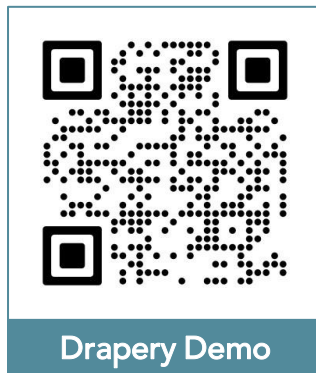
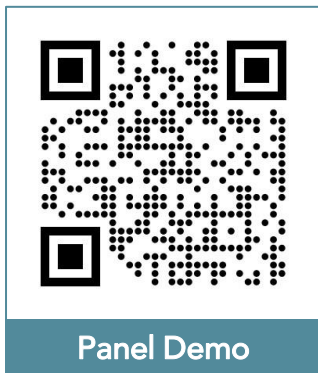
TECHNOLOGY – THE SNOWSOUND DIFFERENCE

Snowsound's patented acoustic technology mimics the way snow absorbs sound in nature. When snow falls, it absorbs almost 100% of the sound wave energy that passes over it. The sound is trapped in the layers of the snow-pack and all noise is absorbed. Similarly, Snowsound panels use a patented composition of layered acoustic foam, which allows the panels to absorb the full range of sounds that hit the panel, providing an industry leading "Class-A" rated NRC of 1.0 to ensure acoustic comfort anywhere people work, learn, heal, eat, or live.

Sound Quality
Selective Frequency Absorption



SCAN TO HEAR THE DIFFERENCE



SNOWSOUND®

10018 Santa Fe Springs Rd. Santa Fe Springs, CA 90670
800.336.4575 | info@snowsoundusa.com | www.snowsoundusa.com



626-441-0300
info@m3office.com
161 Pasadena Ave Suite A
South Pasadena, CA 91030