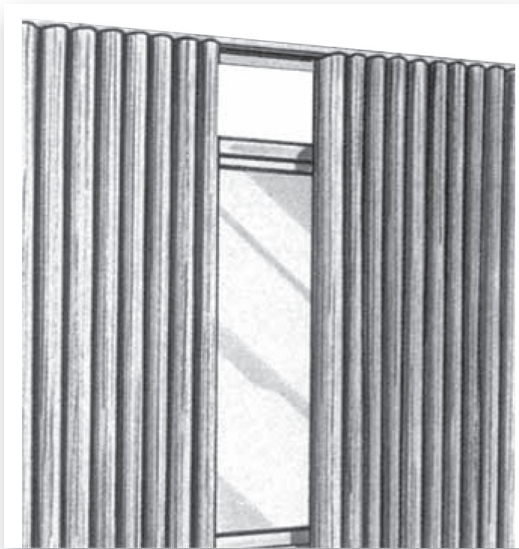
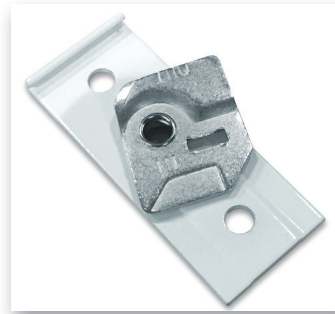


Finished Curtain

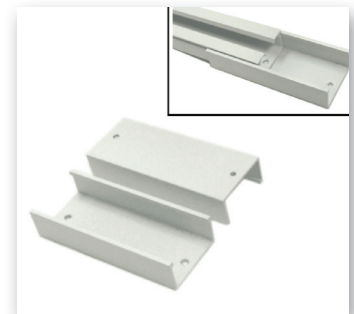
Snowsound Fiber Finished Curtain Parts List



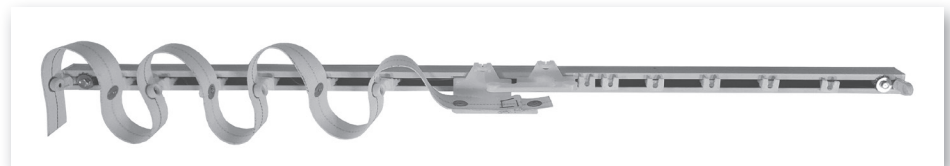
Finished Curtain Panels



Ceiling Bracket

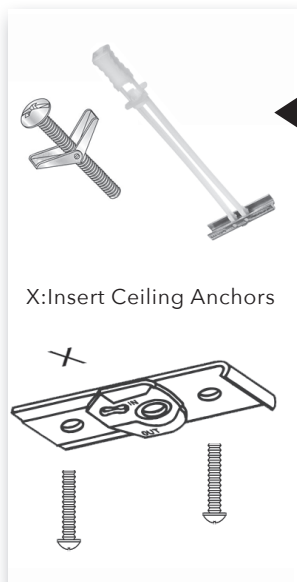


Splice (not applicable on all curtain types)

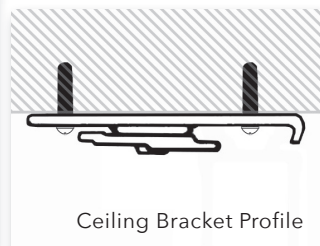


Track for Ceiling Mounting

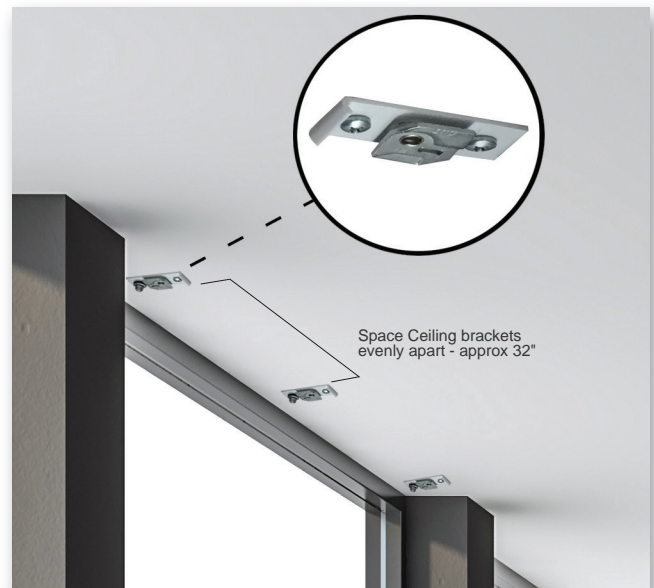
1. Fasten Ceiling Brackets with Screw and Anchor to Ceiling



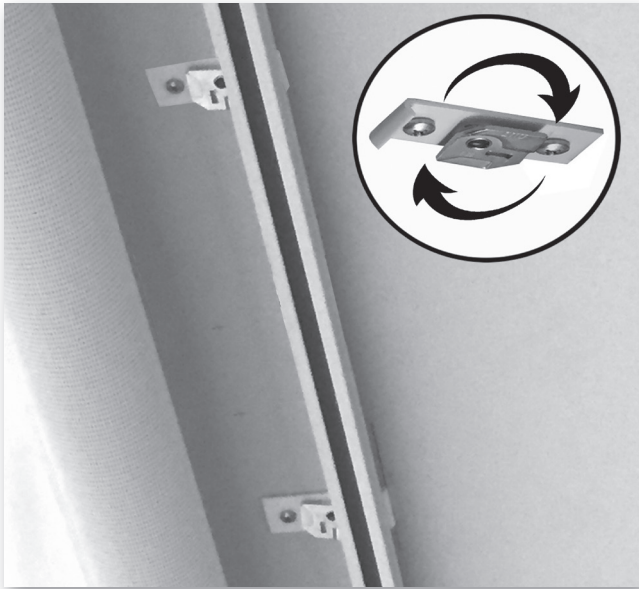
Ceiling Anchor Options



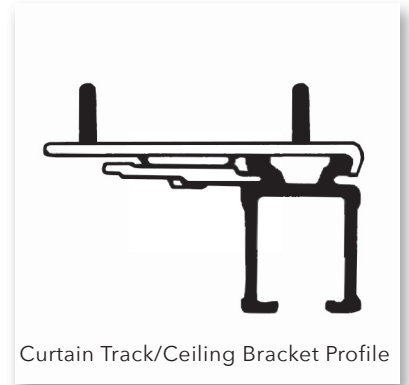
Ceiling Bracket Profile



2. Fasten Curtain Track to Ceiling Brackets

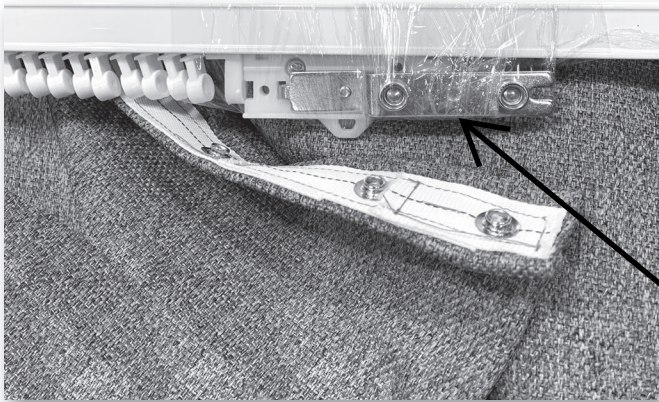


Use Flathead Screwdriver to Rotate Pivoting Square 90° into the Groove of Ceiling Track.



Curtain Track/Ceiling Bracket Profile

3. Connect Curtain to Curtain Track



Snap Buttons on Curtain to Plastic Rings and Metal Bracket.

*Note - if your curtain contains multiple panels, begin buttoning curtain to the master, and then work your way 'away' from master.

Master

4. Connect Baton



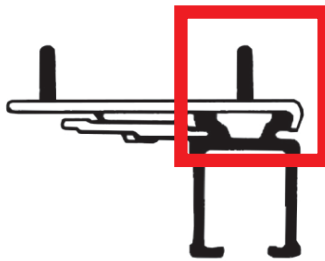
Connect Baton to Plastic Loop on Curtain Track.

GENERAL HARDWARE RECOMMENDATIONS

Contractor / Installer should make the final determination on what type of anchors / fasteners to use for their project. Below are two options the contractor/installer can consider when installing Snowsound Snowcurtains. For more info please reach out to info@snowsoundusa.com

Butterfly Anchors

Size: 3/16" x 2-1/2".



Curtain Track/Ceiling Bracket Profile

**Anchor screw needs to have low profile head so it fits in bracket without obstructing curtain channel.