

The background is a close-up, high-resolution image of a teal-colored fabric with a fine, woven texture. The lighting is dramatic, with one side being significantly darker than the other, creating a strong sense of depth and highlighting the tactile quality of the material. The overall color palette is monochromatic, ranging from deep navy to bright teal.

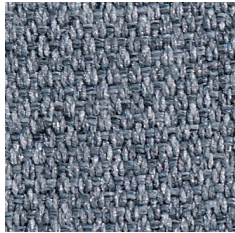
**ACOUSTIC SOFT SEATING
& FURNITURE**

**CILINDRO**

CILINDRO is a sound-absorbing sofa with structure in wooden material and cover composed of sound-absorbing technopolymer inner padding, outer cover in Snow-sound-Fiber Textiles 3 Melange or Fiber 8 Bouclè fabric.

- Eco friendly - Greenguard Gold and Declare Label LBC Red List Free
- Class A sound absorption (ISO 354)
- Class A fire and smoke safety (UL 723/ASTM E84)
- CAL 133, 117 pass
- Patented Technology - Structure, Foam and Fabric
- BIFMA Certified X5.4-2020, Public and Lounge Seating

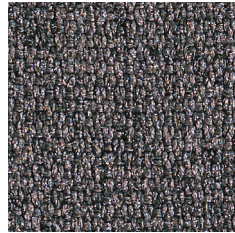
CILINDRO



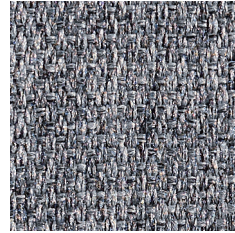
Fiber 3 Melange - 300
Gray Ice



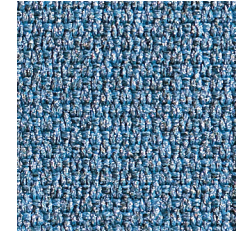
Fiber 3 Melange - 302
Anthracite



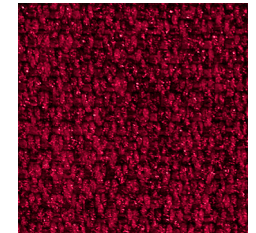
Fiber 3 Melange - 303
Gray Taupe



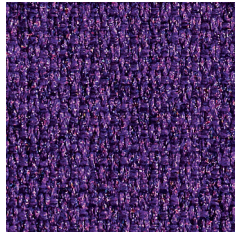
Fiber 3 Melange - 304
Gray Beige



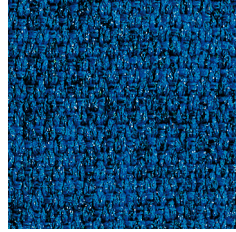
Fiber 3 Melange - 305
Azure



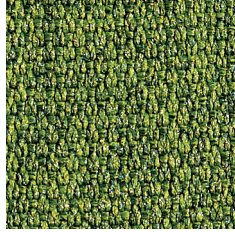
Fiber 3 Melange - 306
Gray Burgundy



Fiber 3 Melange - 307
Gray Plum



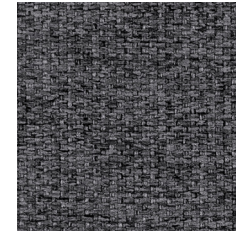
Fiber 3 Melange - 308
Gray Blue



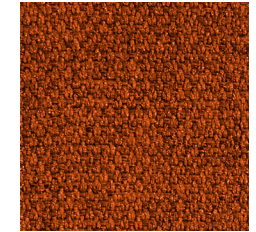
Fiber 3 Melange - 309
Gray Green



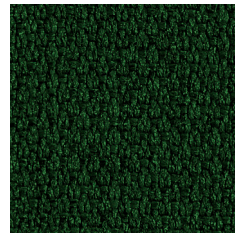
Fiber 3 Melange - 310
Gray Gold



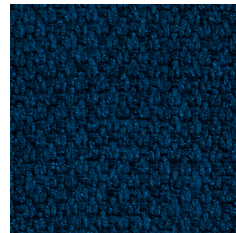
Fiber 3 Melange - 311
Carbon Gray



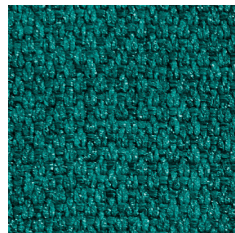
Fiber 3 Melange - 312
Patina



Fiber 3 Melange - 313
Evergreen



Fiber 3 Melange - 314
Admiral Blue



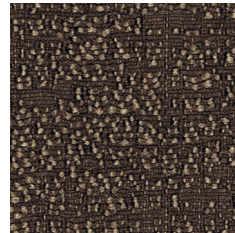
Fiber 3 Melange - 315
Fiji



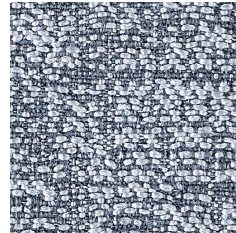
Fiber 3 Melange - 316
Ivory

COMING
SOON!

CILINDRO FIBER TEXTILES



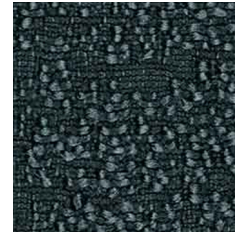
Fiber 8 Bouclé - 800
Dove Coffee



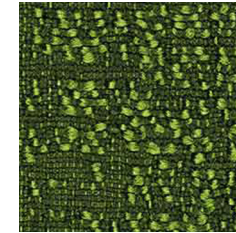
Fiber 8 Bouclé - 801
Gray Ice



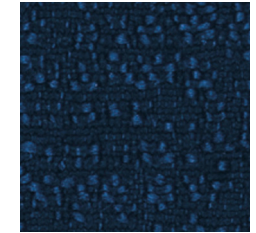
Fiber 8 Bouclé - 802
Gray Beige



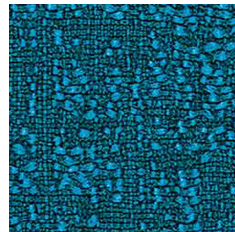
Fiber 8 Bouclé - 803
Graphite



Fiber 8 Bouclé - 804
Clover



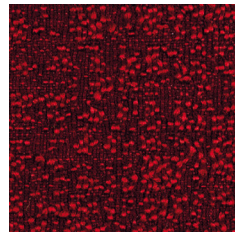
Fiber 8 Bouclé - 805
Oxford



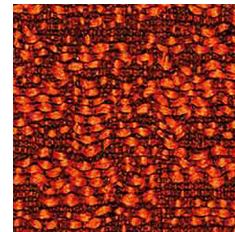
Fiber 8 Bouclé - 806
Syreni Blue



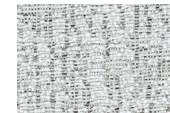
Fiber 8 Bouclé - 807
Obsidian



Fiber 8 Bouclé - 808
Garnet



Fiber 8 Bouclé - 809
Sandstone



Fiber 8 Bouclé - 810



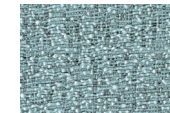
Fiber 8 Bouclé - 811



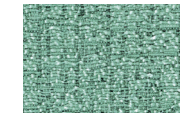
Fiber 8 Bouclé - 812



Fiber 8 Bouclé - 813



Fiber 8 Bouclé - 814

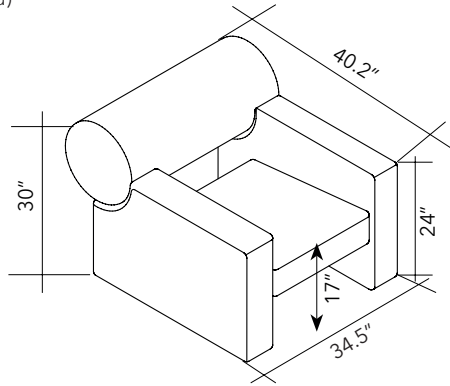


Fiber 8 Bouclé - 815

COMING
SOON!

NOTE ON LEAD TIME: DUE TO THE CUSTOM-MADE NATURE OF THE FOLLOWING PRODUCTS, THE LEAD TIME IS 12 WEEKS (MONTH OF AUGUST EXCLUDED).

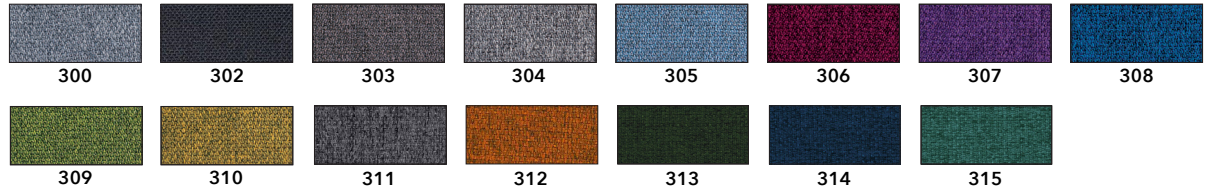
All Soft Seating are
"made-to-order."
Lead time 12 weeks
(month of August
excluded)



CILINDRO - ARM CHAIR
MODEL: 7DB1

MODEL: 7DB1-F3-XXX

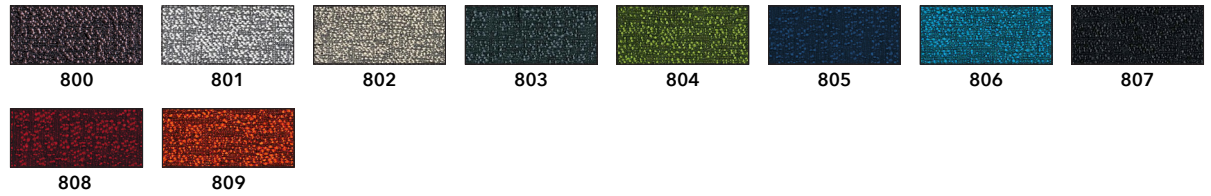
FIBER 3 MELANGE



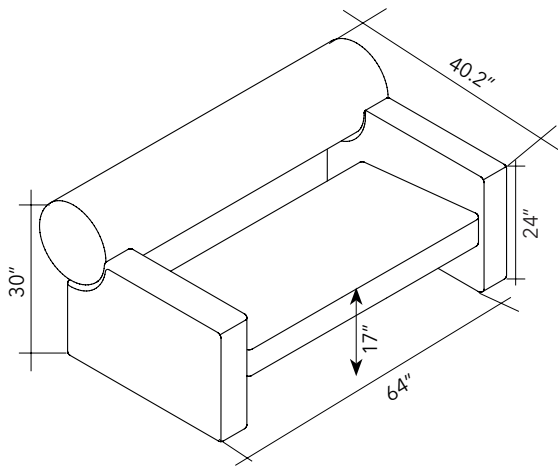
Larger swatches found on page 174

MODEL: 7DB1-F8-XXX

FIBER 8 BOUCLÈ



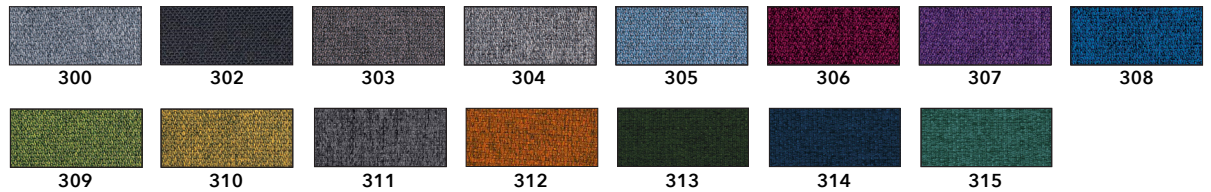
Larger swatches found on page 174



CILINDRO - SOFA
MODEL: 7DB2

MODEL: 7DB2-F3-XXX

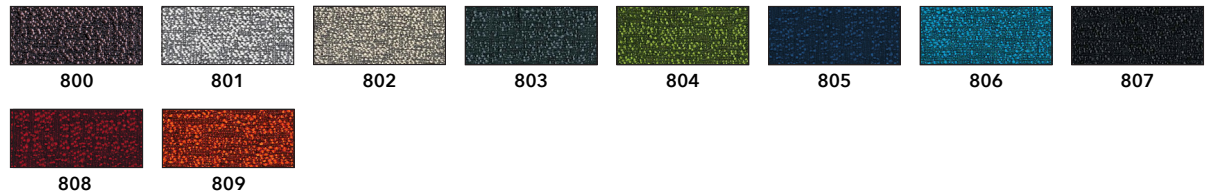
FIBER 3 MELANGE



Larger swatches found on page 174

MODEL: 7DB2-F8-XXX

FIBER 8 BOUCLÈ



Larger swatches found on page 174



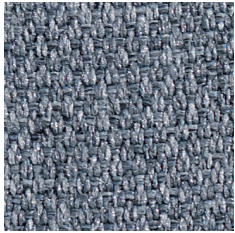
NAPWORK

NAPWORK is a sound-absorbing sofa with structure in wooden material and cover composed of sound-absorbing technopolymer inner padding, outer cover in Snow-sound-Fiber Textiles 3 Melange or Fiber 8 Bouclè fabric. Cover is removable.



NAPWORK can be supplied with radio frequency reduction fabric. Please add 25% on soft-seating price. See page 205 for more information.

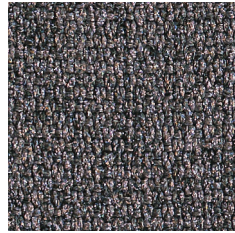
- Eco friendly - Greenguard Gold and Declare Label LBC Red List Free
- Class A sound absorption (ISO 354)
- Class A fire and smoke safety (UL 723/ASTM E84)
- CAL 133, 117 pass
- Patented Technology - Structure, Foam and Fabric
- BIFMA Certified X5.4-2020, Public and Lounge Seating
- Removable outer upholstery cover



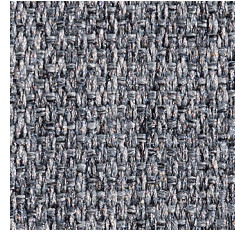
Fiber 3 Melange - 300
Gray Ice



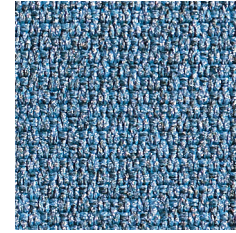
Fiber 3 Melange - 302
Anthracite



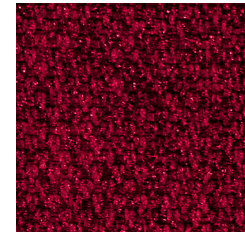
Fiber 3 Melange - 303
Gray Taupe



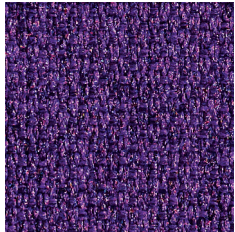
Fiber 3 Melange - 304
Gray Beige



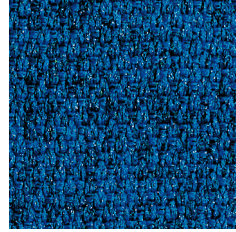
Fiber 3 Melange - 305
Azure



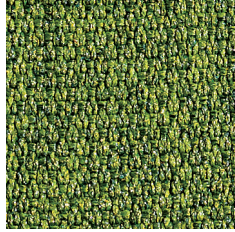
Fiber 3 Melange - 306
Gray Burgundy



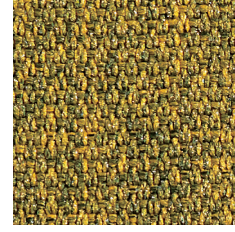
Fiber 3 Melange - 307
Gray Plum



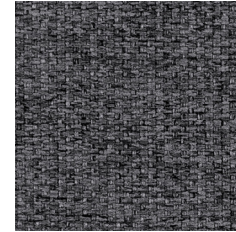
Fiber 3 Melange - 308
Gray Blue



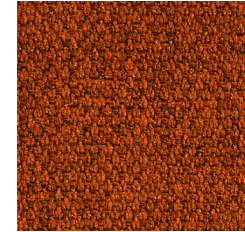
Fiber 3 Melange - 309
Gray Green



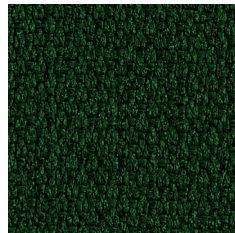
Fiber 3 Melange - 310
Gray Gold



Fiber 3 Melange - 311
Carbon Gray



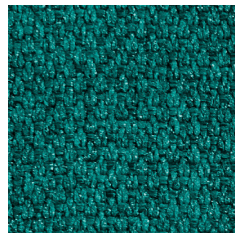
Fiber 3 Melange - 312
Patina



Fiber 3 Melange - 313
Evergreen



Fiber 3 Melange - 314
Admiral Blue



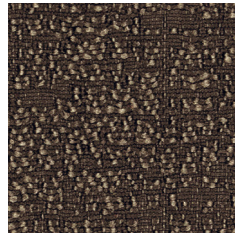
Fiber 3 Melange - 315
Fiji



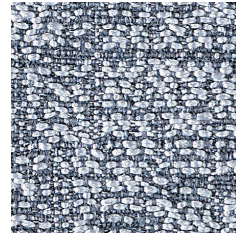
Fiber 3 Melange - 316
Ivory

COMING
SOON!

NAPWORK FIBER TEXTILES



Fiber 8 Bouclé - 800
Dove Coffee



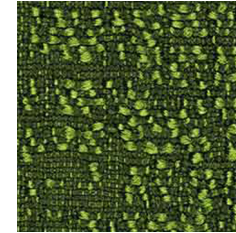
Fiber 8 Bouclé - 801
Gray Ice



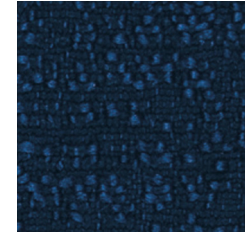
Fiber 8 Bouclé - 802
Gray Beige



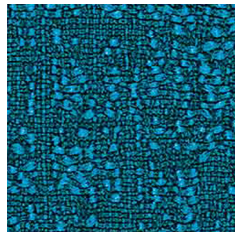
Fiber 8 Bouclé - 803
Graphite



Fiber 8 Bouclé - 804
Clover



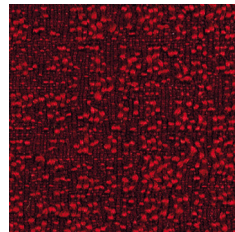
Fiber 8 Bouclé - 805
Oxford



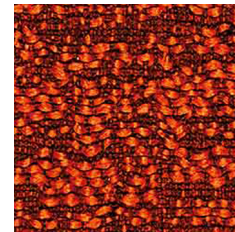
Fiber 8 Bouclé - 806
Syreni Blue



Fiber 8 Bouclé - 807
Obsedian



Fiber 8 Bouclé - 808
Garnet



Fiber 8 Bouclé - 809
Sandstone



Fiber 8 Bouclé - 810



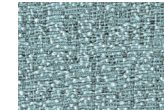
Fiber 8 Bouclé - 811



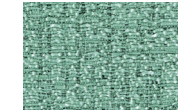
Fiber 8 Bouclé - 812



Fiber 8 Bouclé - 813



Fiber 8 Bouclé - 814

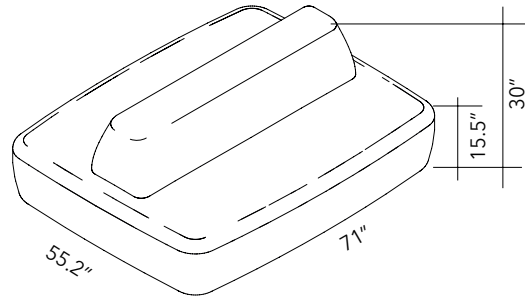


Fiber 8 Bouclé - 815

COMING
SOON!

NOTE ON LEAD TIME: DUE TO THE CUSTOM-MADE NATURE OF THE FOLLOWING PRODUCTS, THE LEAD TIME IS 12 WEEKS (MONTH OF AUGUST EXCLUDED).

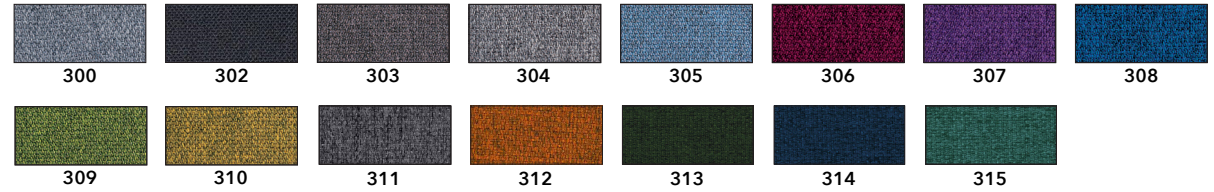
All Soft Seating are "made-to-order." Lead time 12 weeks (month of August excluded)



NAPWORK - LOW BACK
MODEL: 7DNO3

MODEL: 7DNO3-F3-XXX

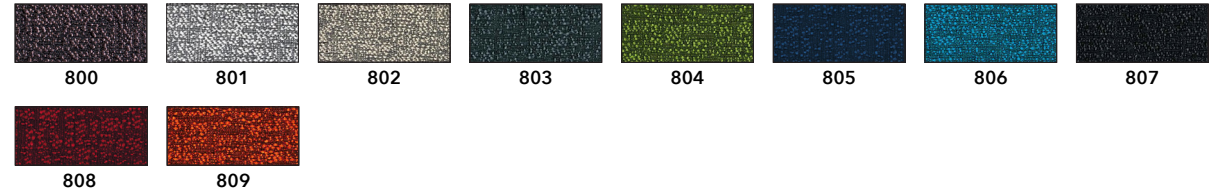
FIBER 3 MELANGE



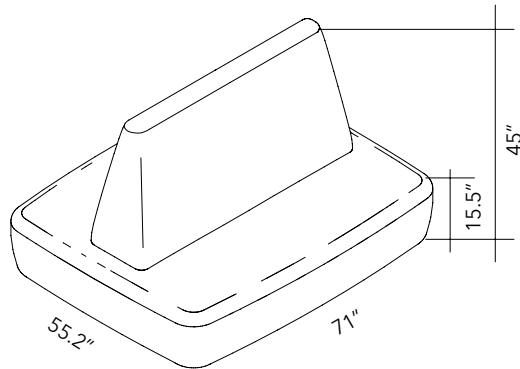
Larger swatches found on page 177

MODEL: 7DNO3-F8-XXX

FIBER 8 BOUCLÈ



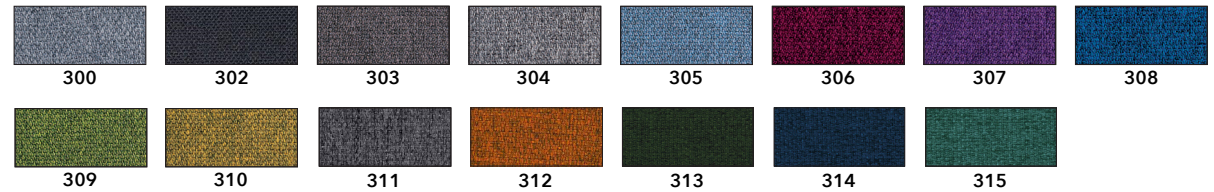
Larger swatches found on page 177



NAPWORK - HIGH BACK
MODEL: 7DNO2

MODEL: 7DNO2-F3-XXX

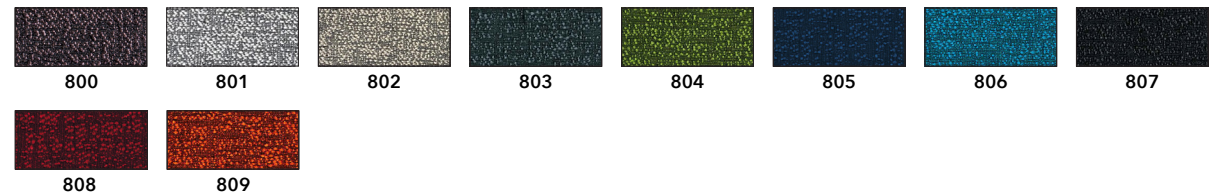
FIBER 3 MELANGE



Larger swatches found on page 177

MODEL: 7DNO2-F8-XXX

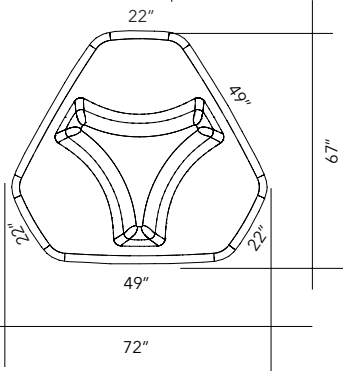
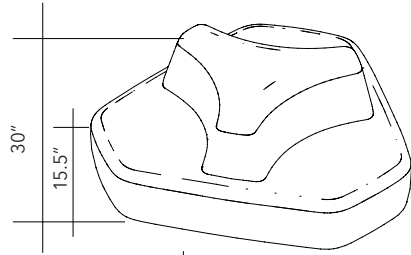
FIBER 8 BOUCLÈ



Larger swatches found on page 177

NOTE ON LEAD TIME: DUE TO THE CUSTOM-MADE NATURE OF THE FOLLOWING PRODUCTS, THE LEAD TIME IS 12 WEEKS (MONTH OF AUGUST EXCLUDED).

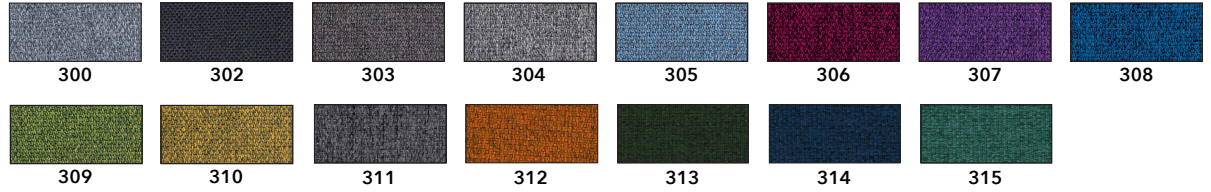
All Soft Seating are
"made-to-order."
Lead time 12 weeks
(month of August
excluded)



NAPWORK - ISLAND
MODEL: 7DNO1

MODEL: 7DNO1-F3-XXX

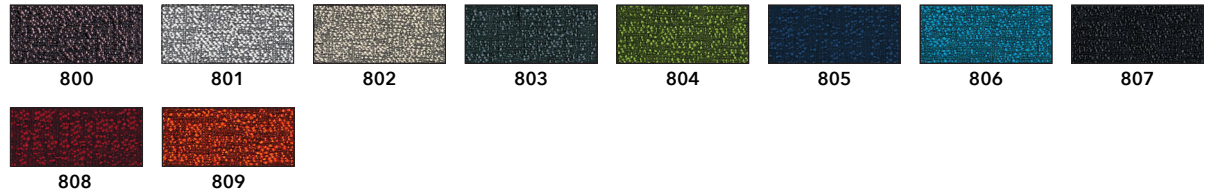
FIBER 3 MELANGE



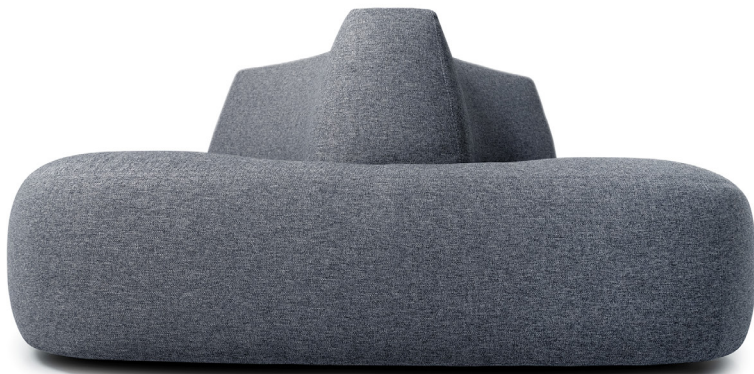
Larger swatches found on page 177

MODEL: 7DNO1-F8-XXX

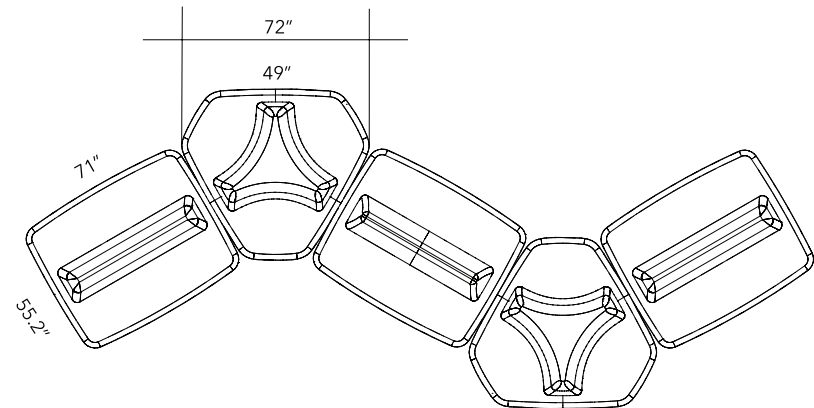
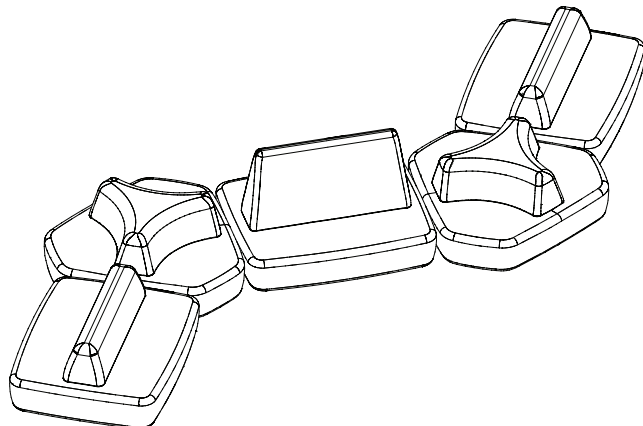
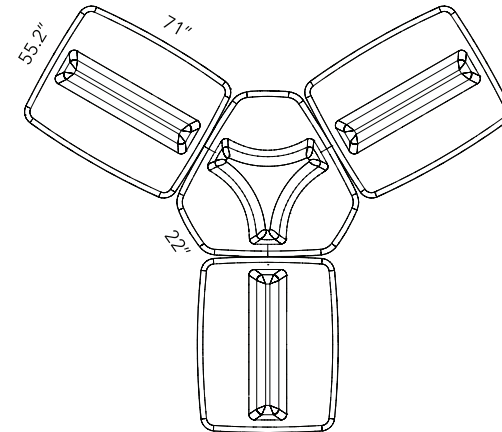
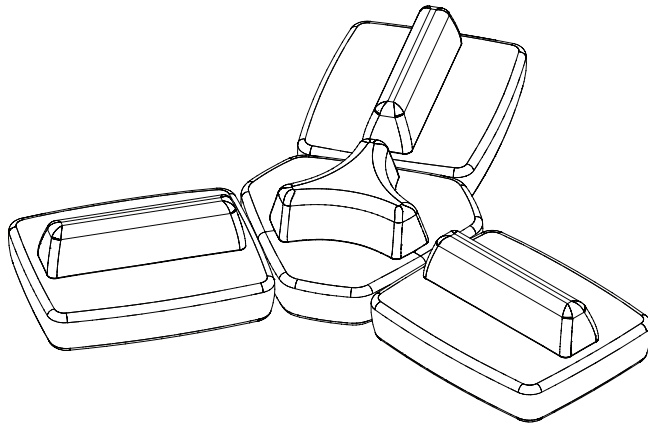
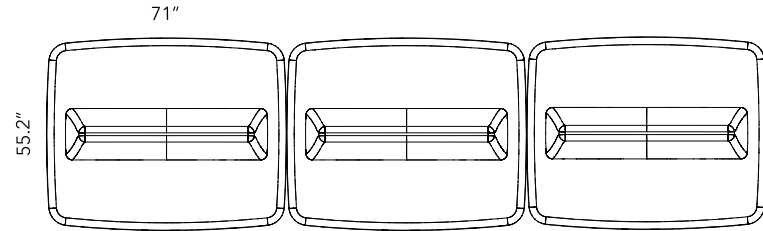
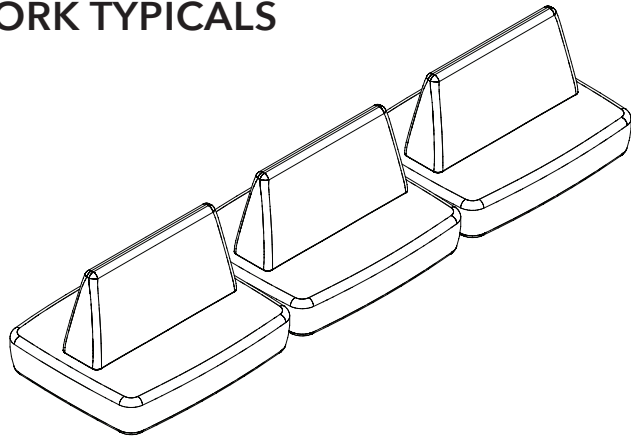
FIBER 8 BOUCLÈ



Larger swatches found on page 177



NAPWORK TYPICALS





SNOWKING

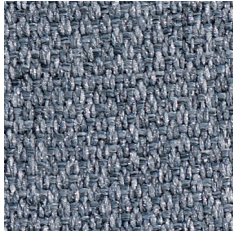
SNOWKING is a sound-absorbing sofa with structure in wooden material and cover composed of sound-absorbing technopolymer inner padding, outer cover in Snowsound-Fiber Textiles 3 Melange or Fiber 6 Velvet fabric.



SNOWKING can be supplied with radio frequency reduction fabric. Please add 25% on soft-seating price. See page 205 for more information.

- Eco friendly - Greenguard Gold and Declare Label LBC Red List Free
- Class A sound absorption (ISO 354)
- Class A fire and smoke safety (UL 723/ASTM E84)
- CAL 133, 117 pass
- Patented Technology - Structure, Foam and Fabric
- BIFMA Certified X5.4-2020, Public and Lounge Seating

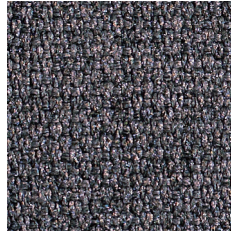
SNOWKING



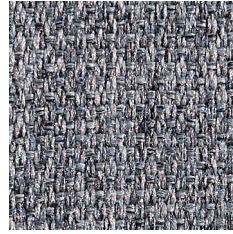
Fiber 3 Melange - 300
Gray Ice



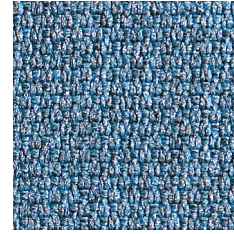
Fiber 3 Melange - 302
Anthracite



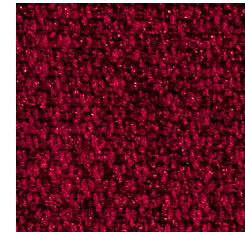
Fiber 3 Melange - 303
Gray Taupe



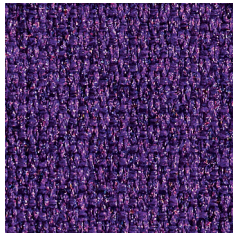
Fiber 3 Melange - 304
Gray Beige



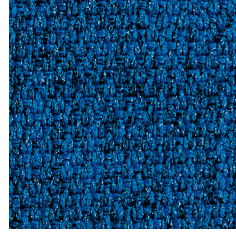
Fiber 3 Melange - 305
Azure



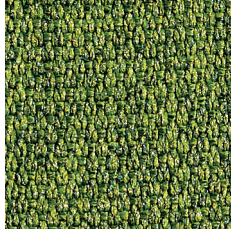
Fiber 3 Melange - 306
Gray Burgundy



Fiber 3 Melange - 307
Gray Plum



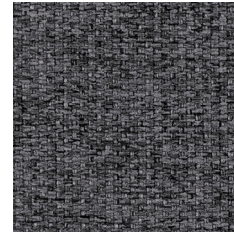
Fiber 3 Melange - 308
Gray Blue



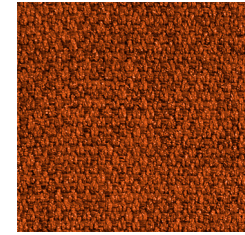
Fiber 3 Melange - 309
Gray Green



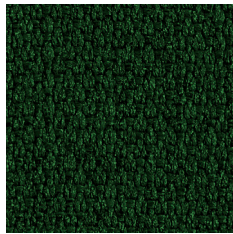
Fiber 3 Melange - 310
Gray Gold



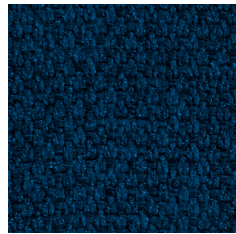
Fiber 3 Melange - 311
Carbon Gray



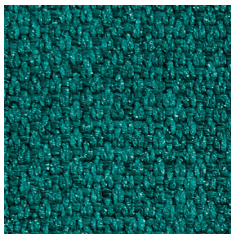
Fiber 3 Melange - 312
Patina



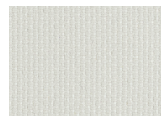
Fiber 3 Melange - 313
Evergreen



Fiber 3 Melange - 314
Admiral Blue



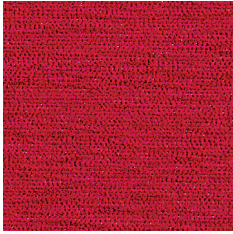
Fiber 3 Melange - 315
Fiji



Fiber 3 Melange - 316
Ivory

COMING
SOON!

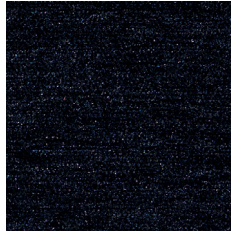
SNOWKING FIBER TEXTILES



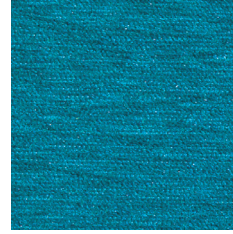
Fiber 6 Velvet - 600
Red



Fiber 6 Velvet - 601
Coffee Brown



Fiber 6 Velvet - 602
Black



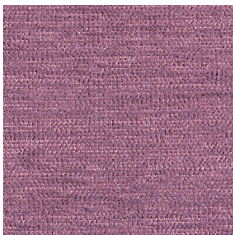
Fiber 6 Velvet - 603
Teal



Fiber 6 Velvet - 604
Beige



Fiber 6 Velvet - 605
Cream



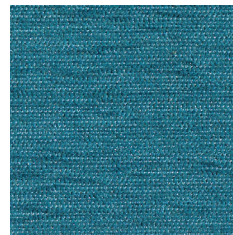
Fiber 6 Velvet - 606
Powder Pink



Fiber 6 Velvet - 607
Medium Gray



Fiber 6 Velvet - 608
Forest Gree



Fiber 6 Velvet - 609
Powder Blue



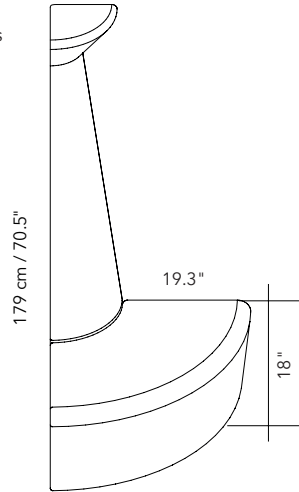
Fiber 6 Velvet - 610
Mustard Gold



Fiber 6 Velvet - 611
Navy Blue

NOTE ON LEAD TIME: DUE TO THE CUSTOM-MADE NATURE OF THE FOLLOWING PRODUCTS, THE LEAD TIME IS 12 WEEKS (MONTH OF AUGUST EXCLUDED).

All Soft Seating are "made-to-order." Lead time 12 weeks (month of August excluded)



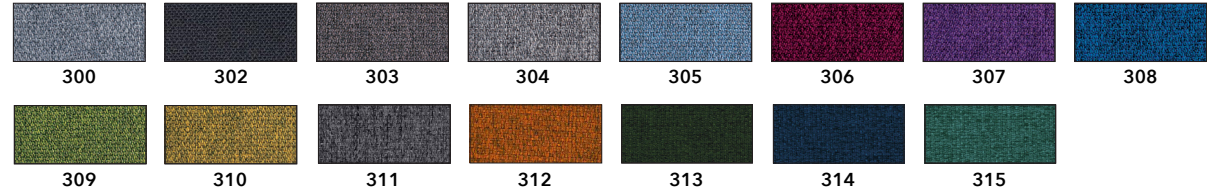
SNOWKING - SOFA ANGLE

MODEL: 7DDQ1

Connecting Joint Hardware on pg. 185

MODEL: 7DDQ1-F3-XXX

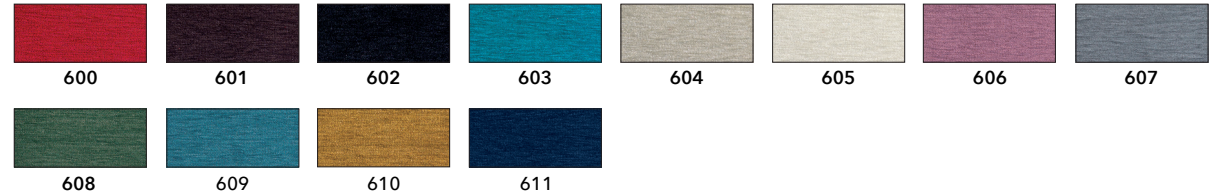
FIBER 3 MELANGE



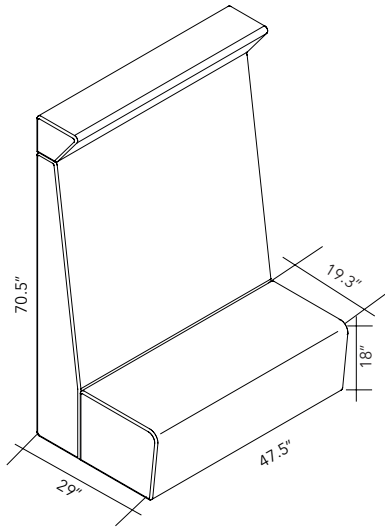
Larger swatches found on page 182

MODEL: 7DDQ1-F6-XXX

FIBER 6 VELVET



Larger swatches found on page 182



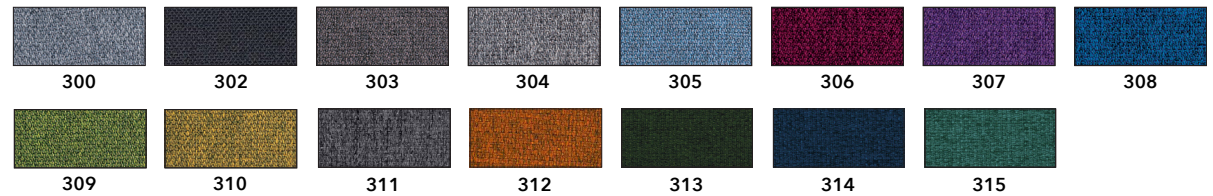
SNOWKING - SOFA CENTRAL PART

MODEL: 7DDQ2

Connecting Joint Hardware on pg. 185

MODEL: 7DDQ2-F3-XXX

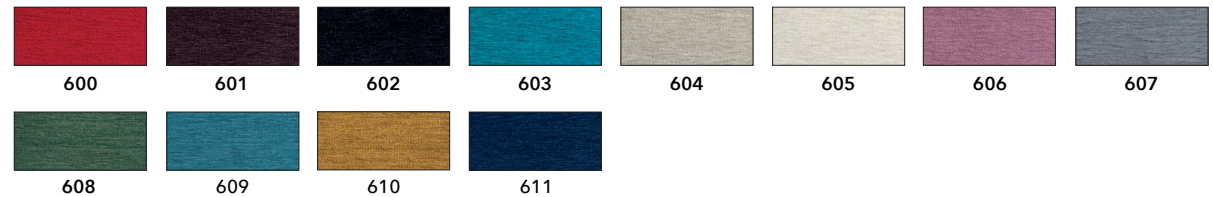
FIBER 3 MELANGE



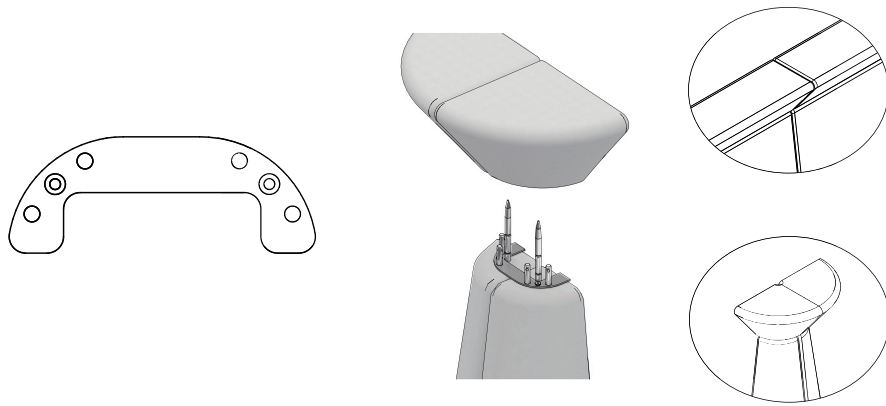
Larger swatches found on page 182

MODEL: 7DDQ2-F6-XXX

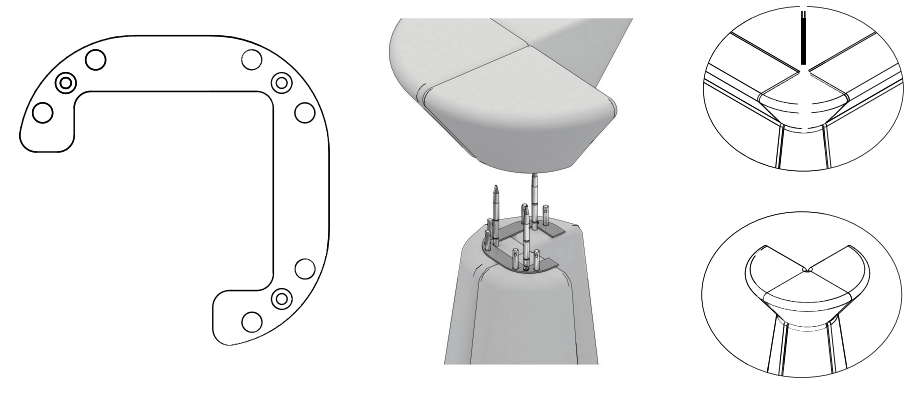
FIBER 6 VELVET



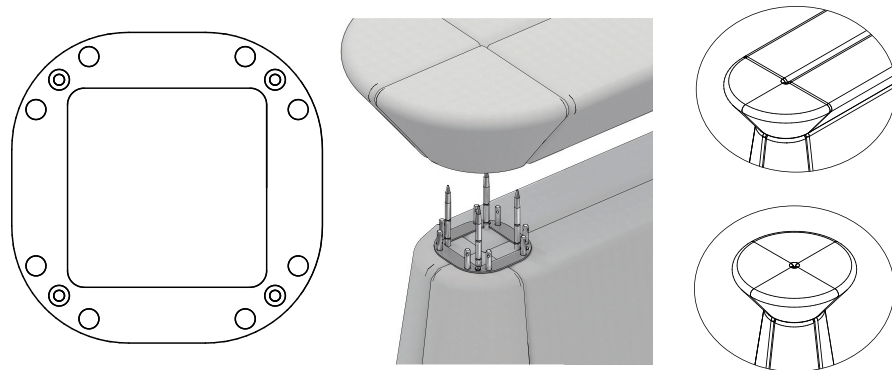
Larger swatches found on page 182

**CONNECTING PLATE - CONNECTS 2 SNOWKING SOFAS**

| SOFA SIZE | PART# | QTY | FINISH |
|------------|--------|-----|---------------------|
| BOTH SIZES | 7DDQP2 | 1 | POWDER-COATED STEEL |

**CONNECTING PLATE - CONNECTS 3 SNOWKING SOFAS**

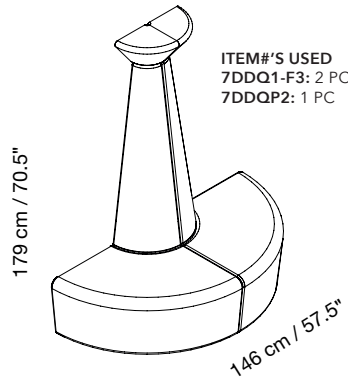
| SOFA SIZE | PART# | QTY | FINISH |
|------------|--------|-----|---------------------|
| BOTH SIZES | 7DDQP3 | 1 | POWDER-COATED STEEL |

**CONNECTING PLATE - CONNECTS 4 SNOWKING SOFAS**

| SOFA SIZE | PART# | QTY | FINISH |
|------------|--------|-----|---------------------|
| BOTH SIZES | 7DDQP4 | 1 | POWDER-COATED STEEL |

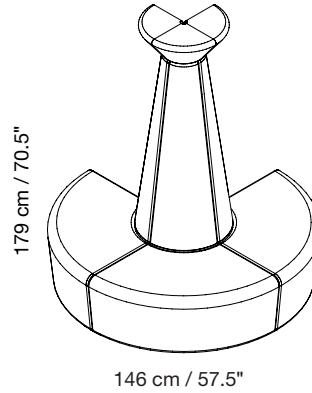


SNOWKING TYPICALS



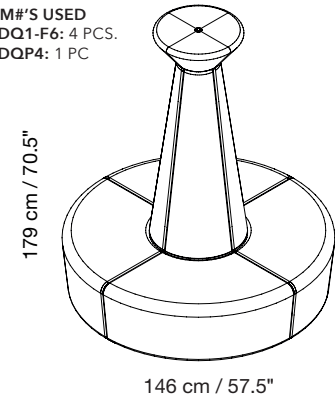
ITEM#S USED
7DDQ1-F3: 2 PCS.
7DDQP2: 1 PC

ITEM#S USED
7DDQ1-F6: 2 PCS.
7DDQP2: 1 PC



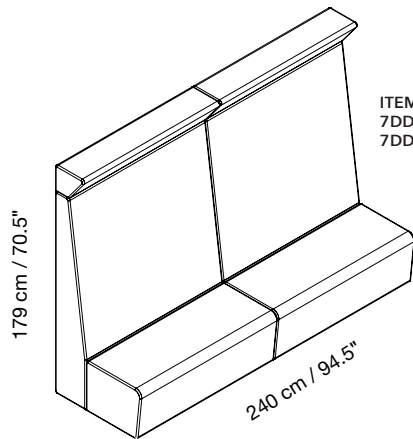
ITEM#S USED
7DDQ1-F3: 3 PCS.
7DDQP3: 1 PC

ITEM#S USED
7DDQ1-F6: 3 PCS.
7DDQP3: 1 PC



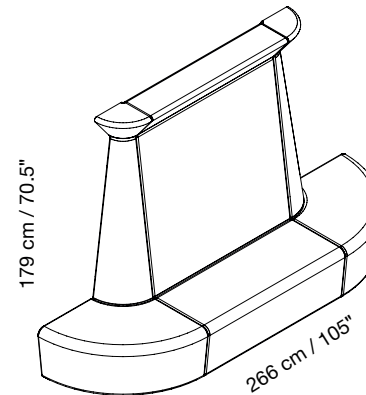
ITEM#S USED
7DDQ1-F3: 4 PCS.
7DDQP4: 1 PC

ITEM#S USED
7DDQ1-F6: 4 PCS.
7DDQP4: 1 PC



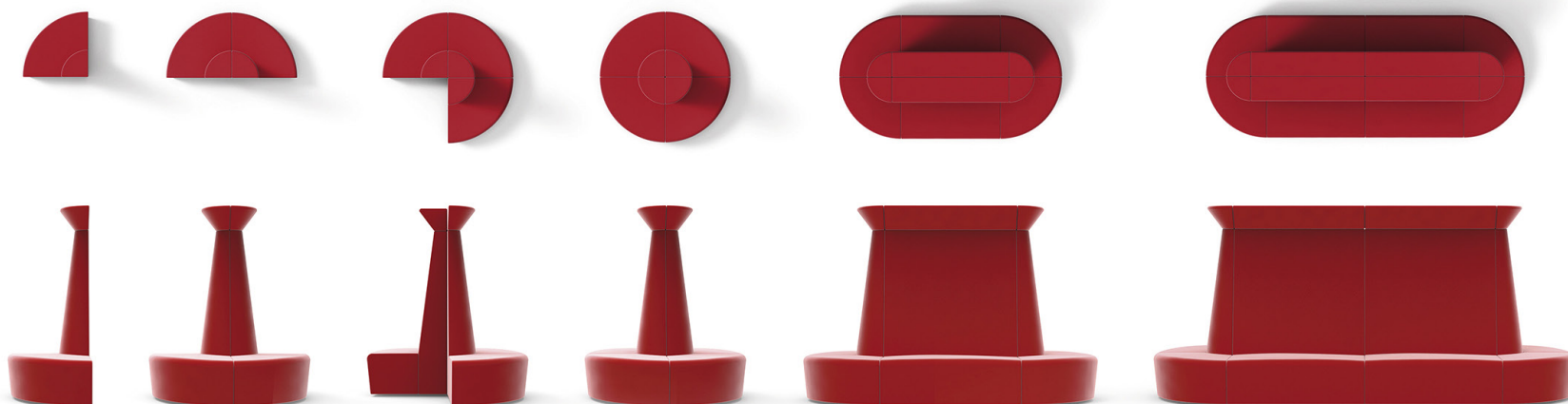
ITEM#S USED
7DDQ2-F3: 2 PCS.
7DDQP2: 1 PC

ITEM#S USED
7DDQ2-F6: 2 PCS.
7DDQP2: 1 PC



ITEM#S USED
7DDQ1-F3: 2 PCS.
7DDQ2-F3: 1 PCS.
7DDQP2: 2 PC

ITEM#S USED
7DDQ1-F6: 2 PCS.
7DDQ2-F6: 1 PCS.
7DDQP2: 2 PC





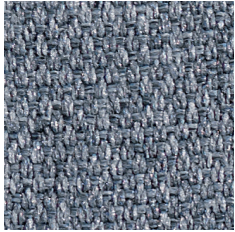
VOLUMI

VOLUMI is a sound-absorbing sofa with structure in wooden material and cover composed of sound-absorbing technopolymer inner padding, outer cover in Snowsound-Fiber Textiles 3 Melange or Fiber 8 Bouclè fabric. Cover is removable.

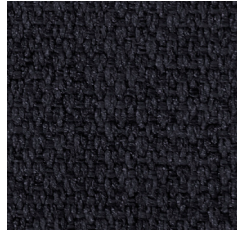


VOLUMI can be supplied with radio frequency reduction fabric. Please add 25% on soft-seating price. See page 205 for more information.

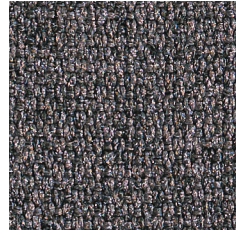
- Eco friendly - Greenguard Gold and Declare Label LBC Red List Free
- Class A sound absorption (ISO 354)
- Class A fire and smoke safety (UL 723/ASTM E84)
- CAL 133, 117 pass
- Patented Technology - Structure, Foam and Fabric
- BIFMA Certified X5.4-2020, Public and Lounge Seating
- Removable outer upholstery cover



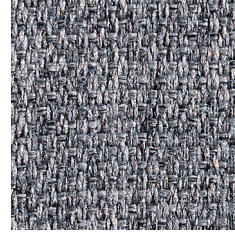
Fiber 3 Melange - 300
Gray Ice



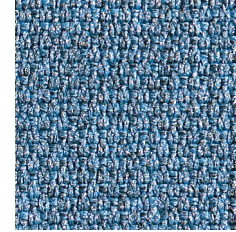
Fiber 3 Melange - 302
Anthracite



Fiber 3 Melange - 303
Gray Taupe



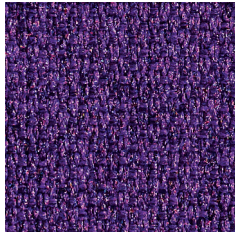
Fiber 3 Melange - 304
Gray Beige



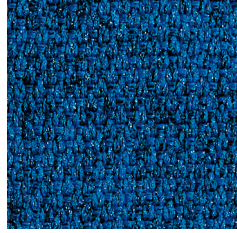
Fiber 3 Melange - 305
Azure



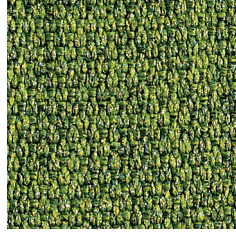
Fiber 3 Melange - 306
Gray Burgundy



Fiber 3 Melange - 307
Gray Plum



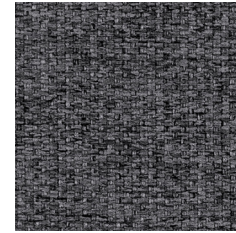
Fiber 3 Melange - 308
Gray Blue



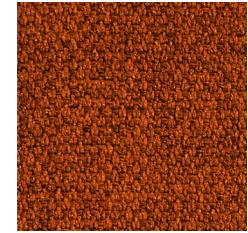
Fiber 3 Melange - 309
Gray Green



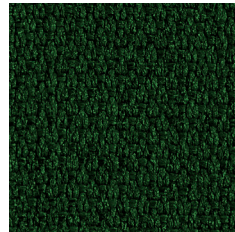
Fiber 3 Melange - 310
Gray Gold



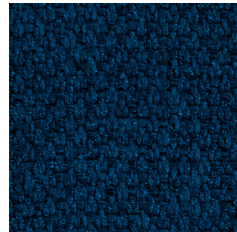
Fiber 3 Melange - 311
Carbon Gray



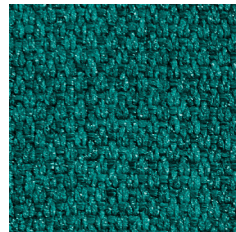
Fiber 3 Melange - 312
Patina



Fiber 3 Melange - 313
Evergreen



Fiber 3 Melange - 314
Admiral Blue



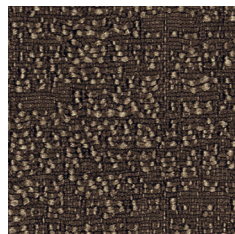
Fiber 3 Melange - 315
Fiji



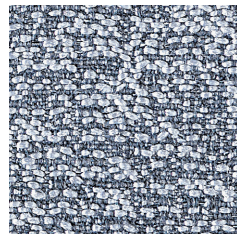
Fiber 3 Melange - 316
Ivory

COMING
SOON!

VOLUMI FIBER TEXTILES



Fiber 8 Bouclé - 800
Dove Coffee



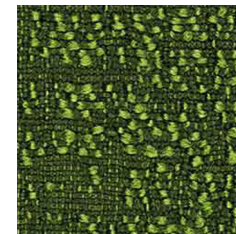
Fiber 8 Bouclé - 801
Gray Ice



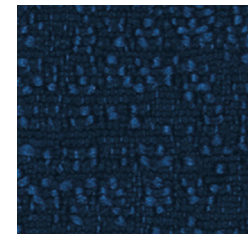
Fiber 8 Bouclé - 802
Gray Beige



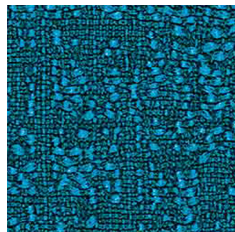
Fiber 8 Bouclé - 803
Graphite



Fiber 8 Bouclé - 804
Clover



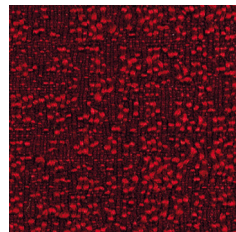
Fiber 8 Bouclé - 805
Oxford



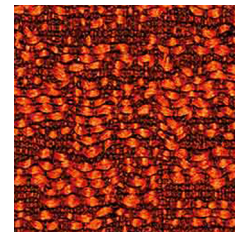
Fiber 8 Bouclé - 806
Syreni Blue



Fiber 8 Bouclé - 807
Obsidian



Fiber 8 Bouclé - 808
Garnet



Fiber 8 Bouclé - 809
Sandstone



Fiber 8 Bouclé - 810



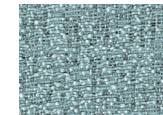
Fiber 8 Bouclé - 811



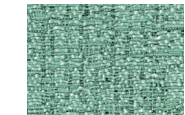
Fiber 8 Bouclé - 812



Fiber 8 Bouclé - 813



Fiber 8 Bouclé - 814

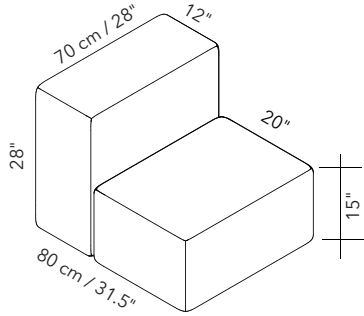


Fiber 8 Bouclé - 815

COMING
SOON!

NOTE ON LEAD TIME: DUE TO THE CUSTOM-MADE NATURE OF THE FOLLOWING PRODUCTS, THE LEAD TIME IS 12 WEEKS (MONTH OF AUGUST EXCLUDED).

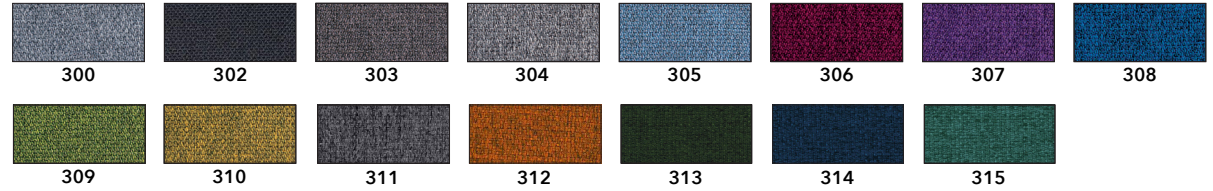
All Soft Seating are "made-to-order." Lead time 12 weeks (month of August excluded)



VOLUMI - MODULAR SEAT MODEL: 7DCL9

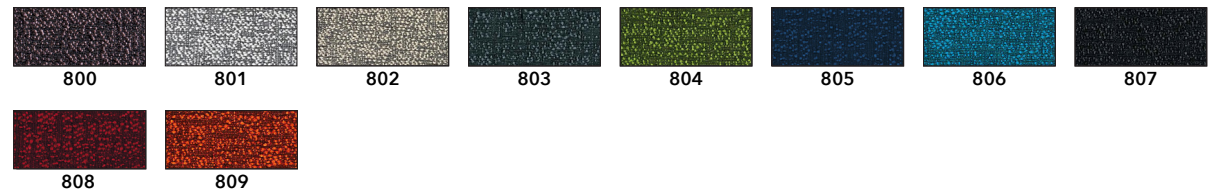
Connecting Joint Hardware on pg. 197

MODEL: 7DCL9-F3-XXX FIBER 3 MELANGE



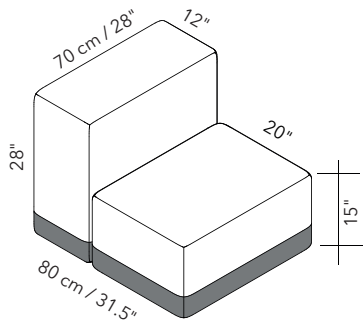
Larger swatches found on page 187

MODEL: 7DCL9-F8-XXX FIBER 8 BOUCLÈ



Larger swatches found on page 187

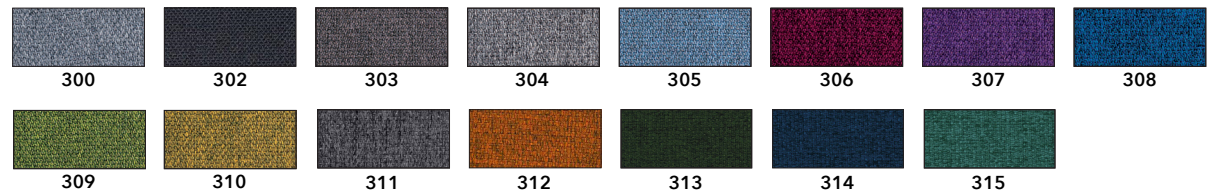
Anthracite color fabric skirting board included on bottom



VOLUMI - MODULAR SEAT MODEL: 7DCL9A

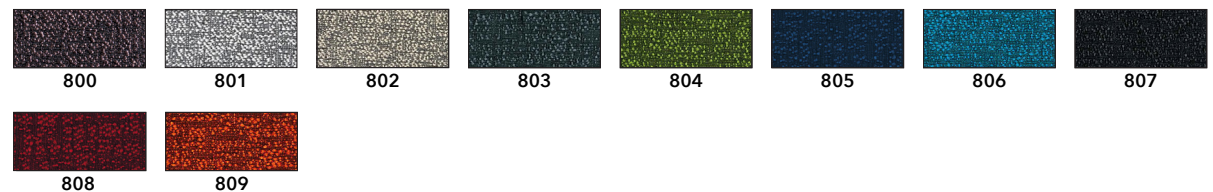
Connecting Joint Hardware on pg. 197

MODEL: 7DCL9A-F3-XXX FIBER 3 MELANGE



Larger swatches found on page 187

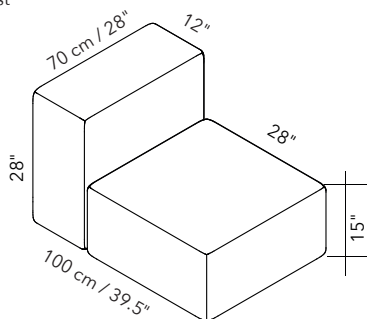
MODEL: 7DCL9A-F8-XXX FIBER 8 BOUCLÈ



Larger swatches found on page 187

NOTE ON LEAD TIME: DUE TO THE CUSTOM-MADE NATURE OF THE FOLLOWING PRODUCTS, THE LEAD TIME IS 12 WEEKS (MONTH OF AUGUST EXCLUDED).

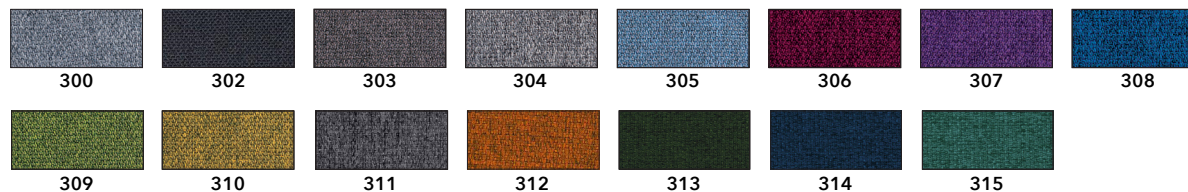
All Soft Seating are "made-to-order." Lead time 12 weeks (month of August excluded)



VOLUMI - MODULAR LOUNGER
MODEL: 7DCL1

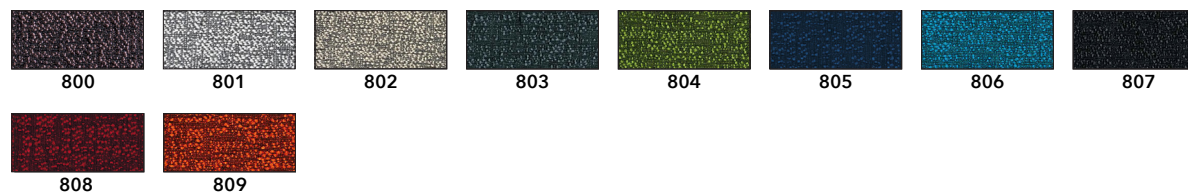
Connecting Joint Hardware on pg. 197

MODEL: 7DCL1-F3-XXX
FIBER 3 MELANGE



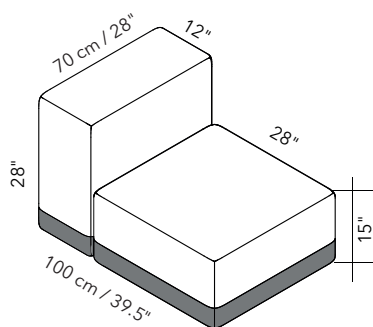
Larger swatches found on page 187

MODEL: 7DCL1-F8-XXX
FIBER 8 BOUCLÈ



Larger swatches found on page 187

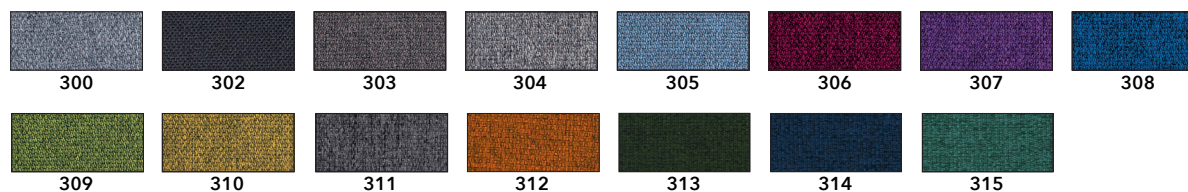
Anthracite color fabric skirting board included on bottom



VOLUMI - MODULAR LOUNGER
MODEL: 7DCL1A

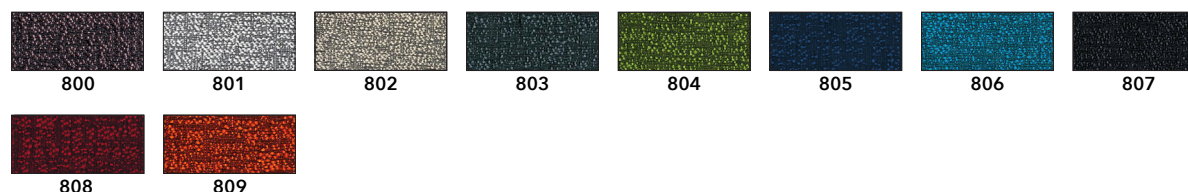
Connecting Joint Hardware on pg. 197

MODEL: 7DCL1A-F3-XXX
FIBER 3 MELANGE



Larger swatches found on page 187

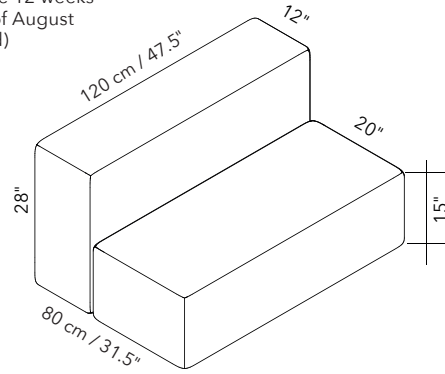
MODEL: 7DCL1A-F3-XXX
FIBER 8 BOUCLÈ



Larger swatches found on page 187

NOTE ON LEAD TIME: DUE TO THE CUSTOM-MADE NATURE OF THE FOLLOWING PRODUCTS, THE LEAD TIME IS 12 WEEKS (MONTH OF AUGUST EXCLUDED).

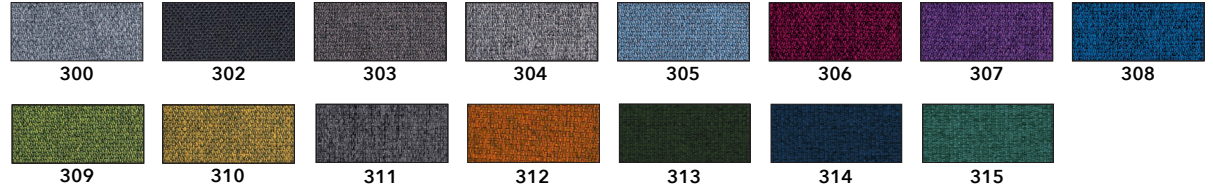
All Soft Seating are "made-to-order." Lead time 12 weeks (month of August excluded)



VOLUMI - MODULAR LOVESEAT MODEL: 7DCL10

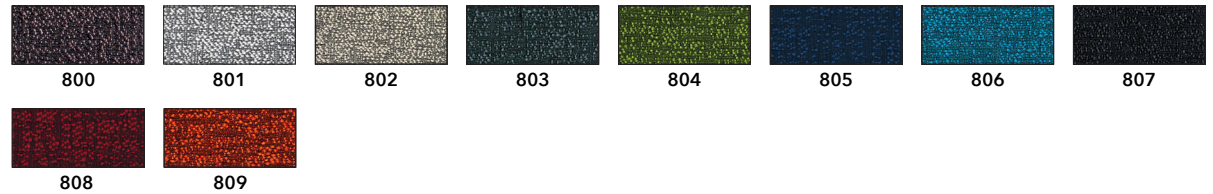
Connecting Joint Hardware on pg. 197

MODEL: 7DCL10-F3-XXX FIBER 3 MELANGE



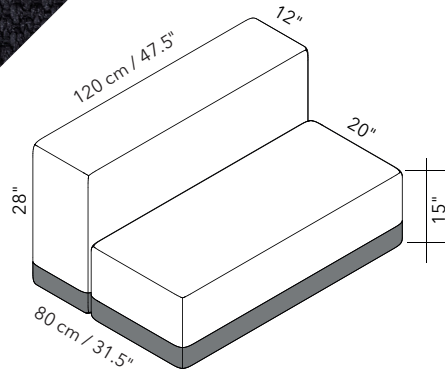
Larger swatches found on page 187

MODEL: 7DCL10-F8-XXX FIBER 8 BOUCLÈ



Larger swatches found on page 187

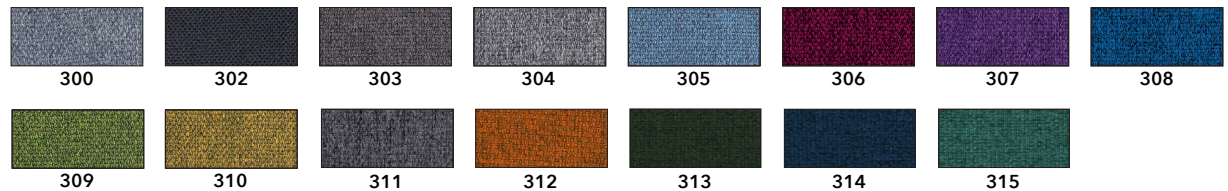
Anthracite color fabric skirting board included on bottom



VOLUMI - MODULAR LOVESEAT MODEL: 7DCL10A

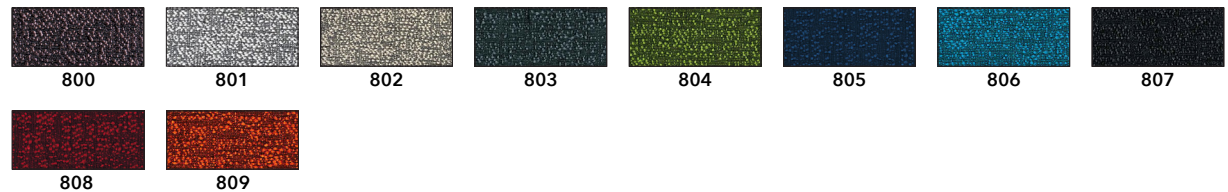
Connecting Joint Hardware on pg. 197

MODEL: 7DCL10-F3-XXX FIBER 3 MELANGE



Larger swatches found on page 187

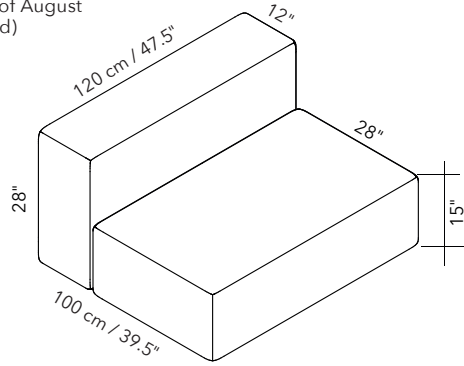
MODEL: 7DCL10-F8-XXX FIBER 8 BOUCLÈ



Larger swatches found on page 187

NOTE ON LEAD TIME: DUE TO THE CUSTOM-MADE NATURE OF THE FOLLOWING PRODUCTS, THE LEAD TIME IS 12 WEEKS (MONTH OF AUGUST EXCLUDED).

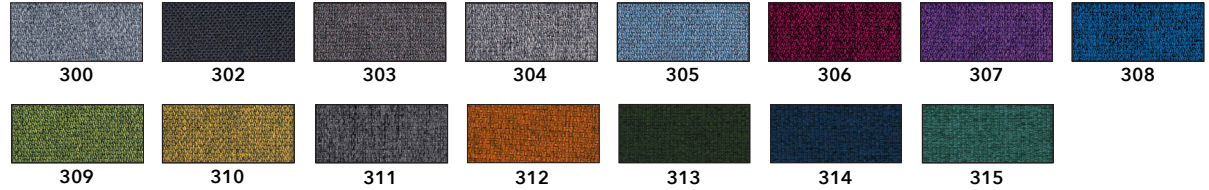
All Soft Seating are "made-to-order." Lead time 12 weeks (month of August excluded)



VOLUMI - DEEP MODULAR LOVESEAT
MODEL: 7DCL2

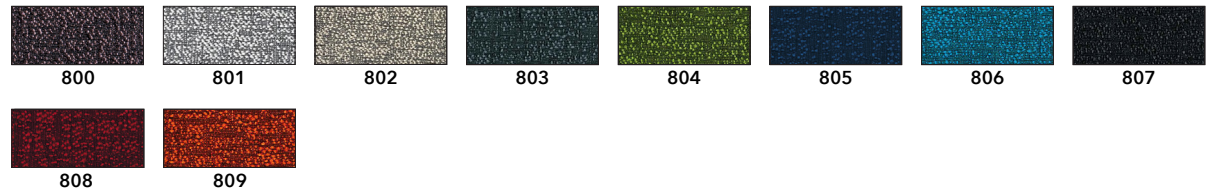
Connecting Joint Hardware on pg. 197

MODEL: 7DCL2-F3-XXX
FIBER 3 MELANGE



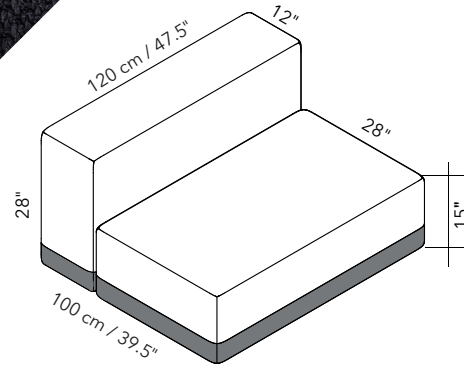
Larger swatches found on page 187

MODEL: 7DCL2-F8-XXX
FIBER 8 BOUCLÈ



Larger swatches found on page 187

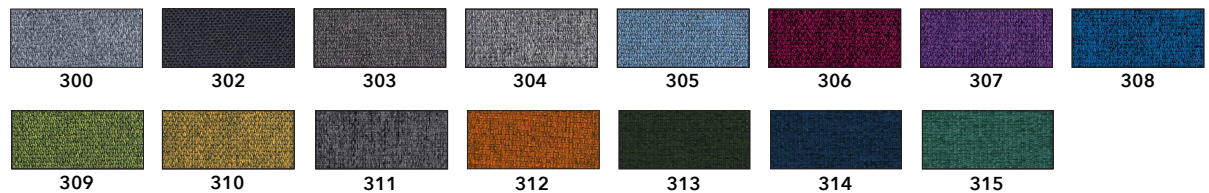
Anthracite color fabric skirting board included on bottom



VOLUMI - DEEP MODULAR LOVESEAT
MODEL: 7DCL2A

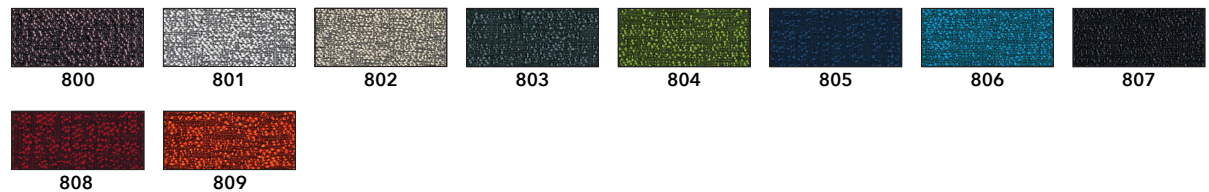
Connecting Joint Hardware on pg. 197

MODEL: 7DCL2A-F3-XXX
FIBER 3 MELANGE



Larger swatches found on page 187

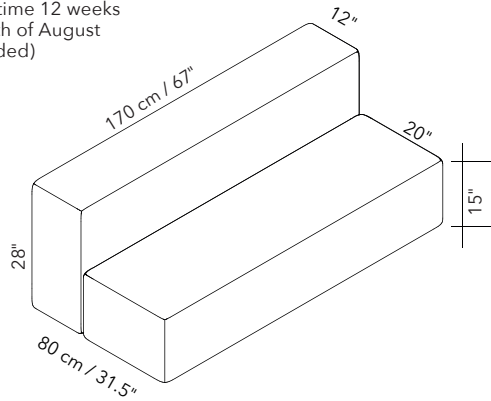
MODEL: 7DCL2A-F8-XXX
FIBER 8 BOUCLÈ



Larger swatches found on page 187

NOTE ON LEAD TIME: DUE TO THE CUSTOM-MADE NATURE OF THE FOLLOWING PRODUCTS, THE LEAD TIME IS 12 WEEKS (MONTH OF AUGUST EXCLUDED).

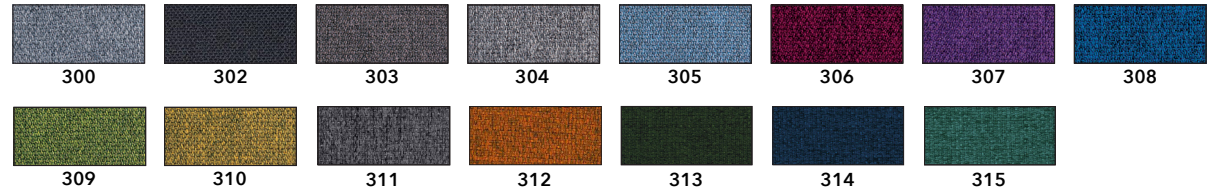
All Soft Seating are "made-to-order." Lead time 12 weeks (month of August excluded)



VOLUMI - MODULAR SOFA
MODEL: 7DCL11

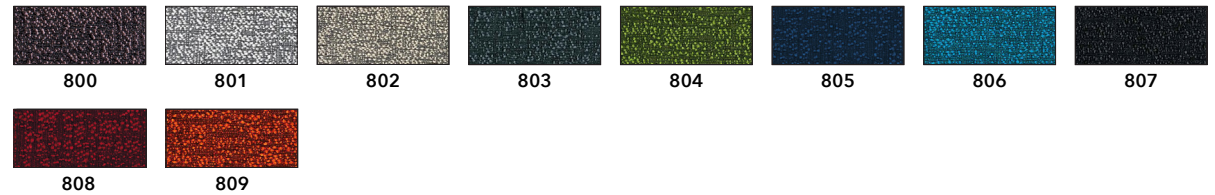
Connecting Joint Hardware on pg. 197

MODEL: 7DCL11-F3-XXX
FIBER 3 MELANGE



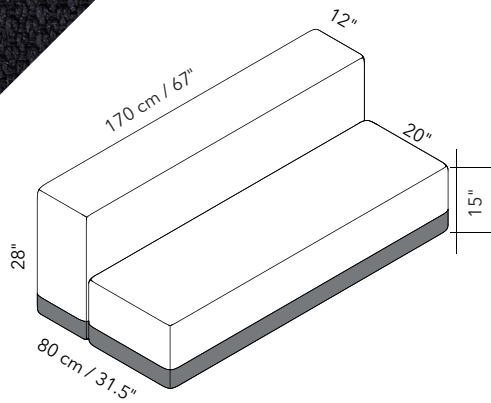
Larger swatches found on page 187

MODEL: 7DCL11-F8-XXX
FIBER 8 BOUCLÈ



Larger swatches found on page 187

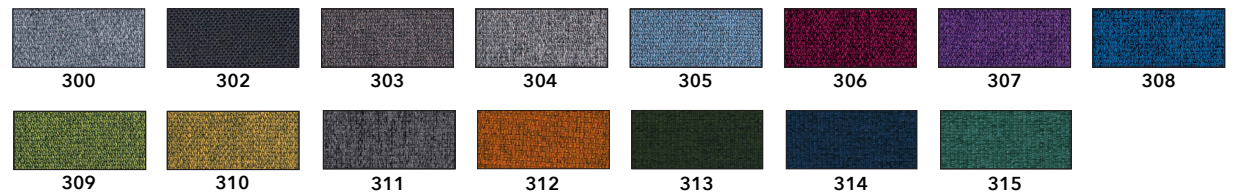
Fiber 3 Anthracite color fabric skirting board included on bottom



VOLUMI - MODULAR SOFA
MODEL: 7DCL11A

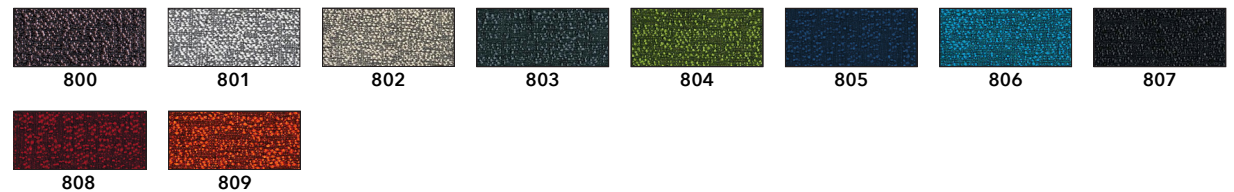
Connecting Joint Hardware on pg. 197

MODEL: 7DCL11A-F3-XXX
FIBER 3 MELANGE



Larger swatches found on page 187

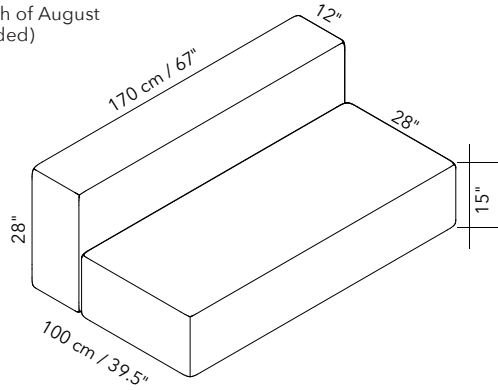
MODEL: 7DCL11A-F8-XXX
FIBER 8 BOUCLÈ



Larger swatches found on page 187

NOTE ON LEAD TIME: DUE TO THE CUSTOM-MADE NATURE OF THE FOLLOWING PRODUCTS, THE LEAD TIME IS 12 WEEKS (MONTH OF AUGUST EXCLUDED).

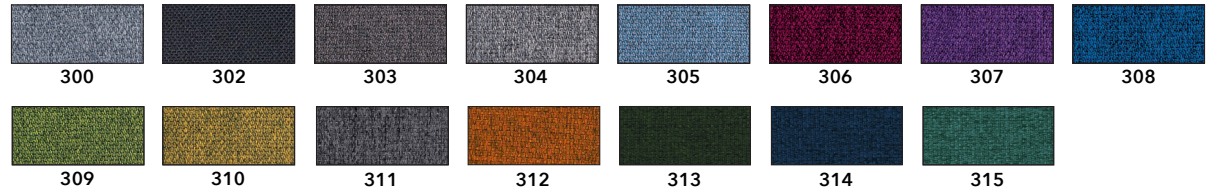
All Soft Seating are "made-to-order." Lead time 12 weeks (month of August excluded)



VOLUMI - DEEP MODULAR SOFA
MODEL: 7DCL3

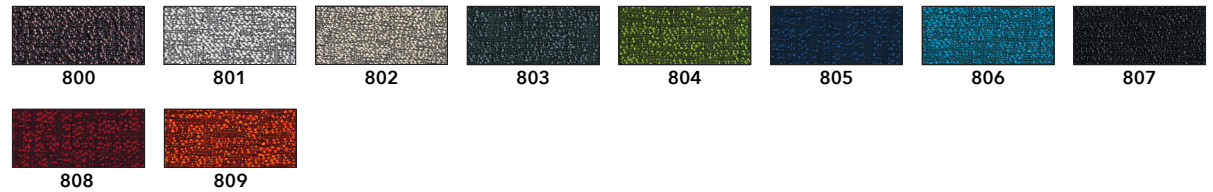
Connecting Joint Hardware on pg. 197

MODEL: 7DCL3-F3-XXX
FIBER 3 MELANGE

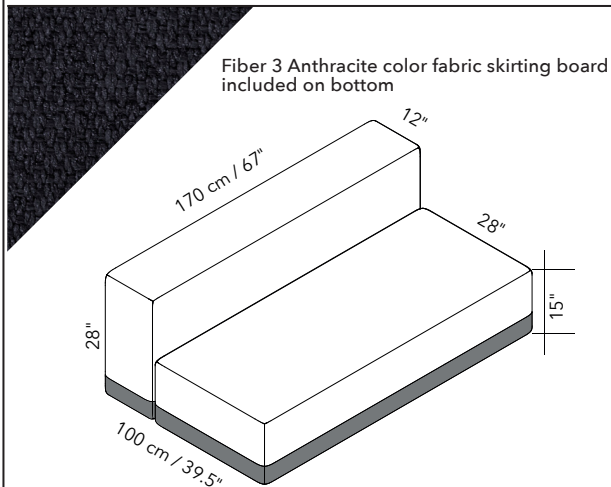


Larger swatches found on page 187

MODEL: 7DCL3-F8-XXX
FIBER 8 BOUCLÈ



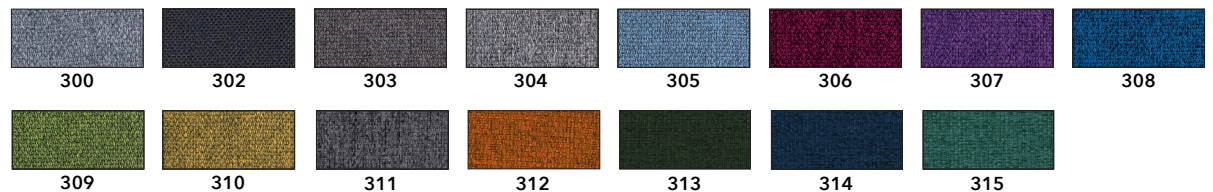
Larger swatches found on page 187



VOLUMI - DEEP MODULAR SOFA
MODEL: 7DCL3A

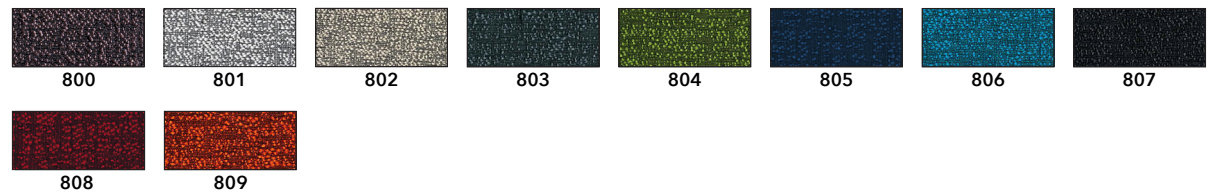
Connecting Joint Hardware on pg. 197

MODEL: 7DCL3A-F3-XXX
FIBER 3 MELANGE



Larger swatches found on page 187

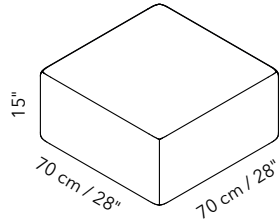
MODEL: 7DCL3A-F8-XXX
FIBER 8 BOUCLÈ



Larger swatches found on page 187

NOTE ON LEAD TIME: DUE TO THE CUSTOM-MADE NATURE OF THE FOLLOWING PRODUCTS, THE LEAD TIME IS 12 WEEKS (MONTH OF AUGUST EXCLUDED).

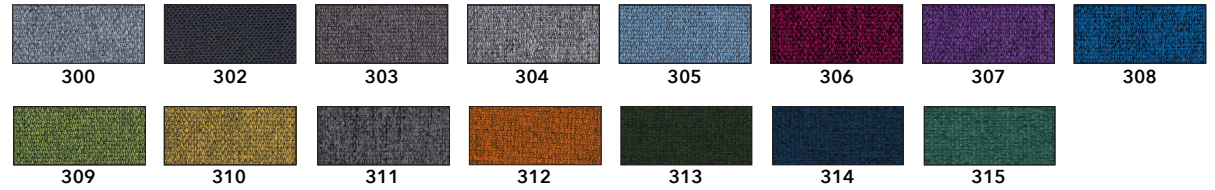
All Soft Seating are "made-to-order." Lead time 12 weeks (month of August excluded)



VOLUMI - MODULAR OTTOMAN (SM)
MODEL: 7DCL4

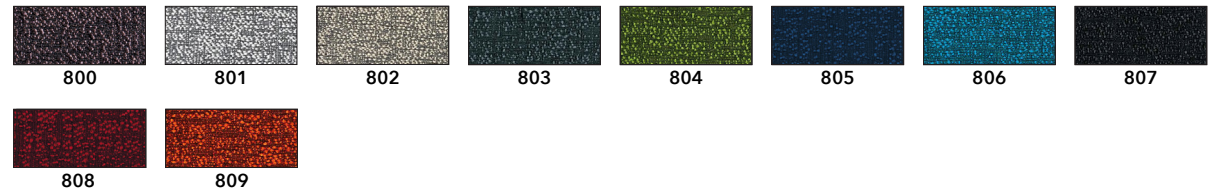
Connecting Joint Hardware on pg. 197

MODEL: 7DCL4-F3-XXX
FIBER 3 MELANGE



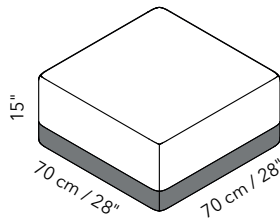
Larger swatches found on page 187

MODEL: 7DCL4-F8-XXX
FIBER 8 BOUCLÈ



Larger swatches found on page 187

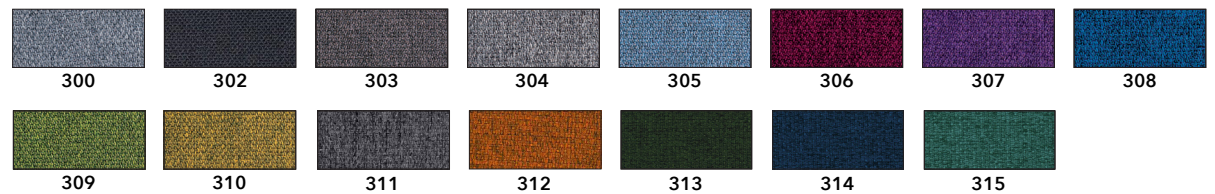
Fiber 3 Anthracite color fabric skirting board included on bottom



VOLUMI - MODULAR OTTOMAN (SM)
MODEL: 7DCL4A

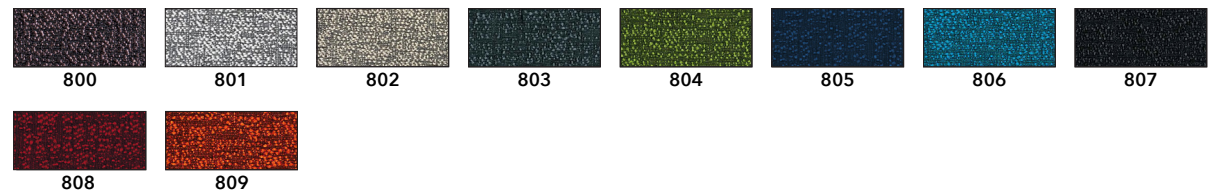
Connecting Joint Hardware on pg. 197

MODEL: 7DCL4A-F3-XXX
FIBER 3 MELANGE



Larger swatches found on page 187

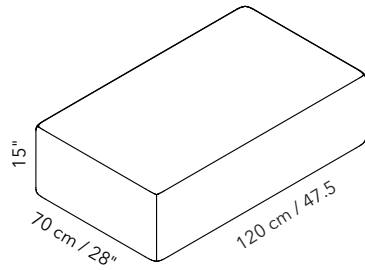
MODEL: 7DCL4A-F8-XXX
FIBER 8 BOUCLÈ



Larger swatches found on page 187

NOTE ON LEAD TIME: DUE TO THE CUSTOM-MADE NATURE OF THE FOLLOWING PRODUCTS, THE LEAD TIME IS 12 WEEKS (MONTH OF AUGUST EXCLUDED).

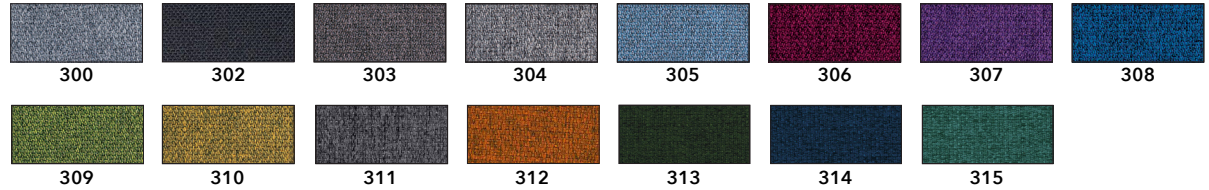
All Soft Seating are "made-to-order." Lead time 12 weeks (month of August excluded)



VOLUMI - MODULAR OTTOMAN (MED)
MODEL: 7DCL5

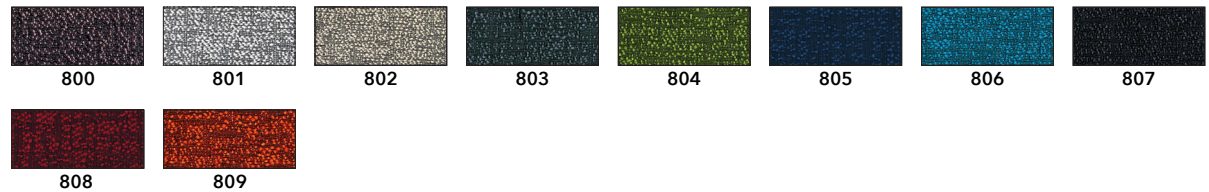
Connecting Joint Hardware on pg. 197

MODEL: 7DCL5-F3-XXX
FIBER 3 MELANGE



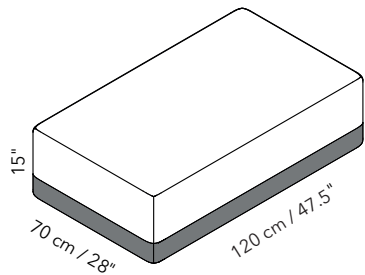
Larger swatches found on page 187

MODEL: 7DCL5-F8-XXX
FIBER 8 BOUCLÈ



Larger swatches found on page 187

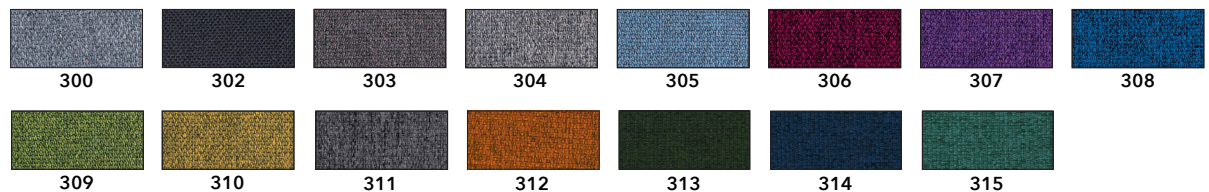
Fiber 3 Anthracite color fabric skirting board included on bottom



VOLUMI - MODULAR OTTOMAN (MED)
MODEL: 7DCL5A

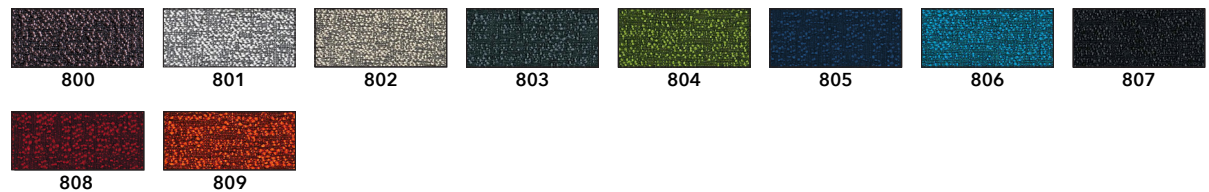
Connecting Joint Hardware on pg. 197

MODEL: 7DCL5A-F3-XXX
FIBER 3 MELANGE



Larger swatches found on page 187

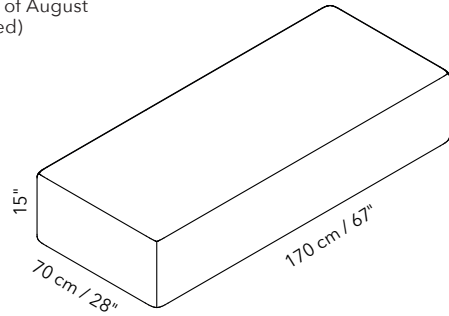
MODEL: 7DCL5A-F8-XXX
FIBER 8 BOUCLÈ



Larger swatches found on page 187

NOTE ON LEAD TIME: DUE TO THE CUSTOM-MADE NATURE OF THE FOLLOWING PRODUCTS, THE LEAD TIME IS 12 WEEKS (MONTH OF AUGUST EXCLUDED).

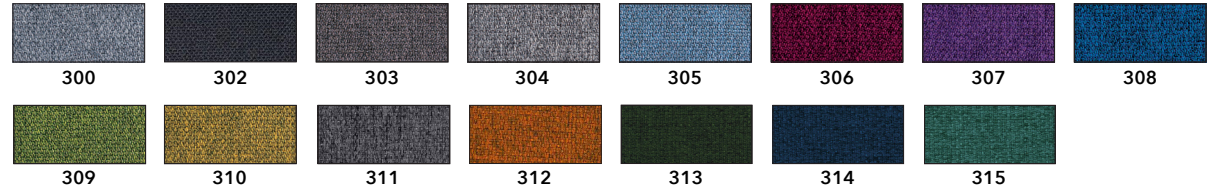
All Soft Seating are "made-to-order." Lead time 12 weeks (month of August excluded)



VOLUMI - MODULAR OTTOMAN (LRG)
MODEL: 7DCL6

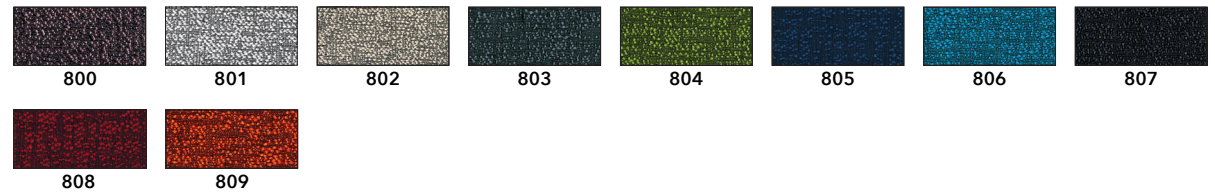
Connecting Joint Hardware on pg. 197

MODEL: 7DCL6-F3-XXX
FIBER 3 MELANGE



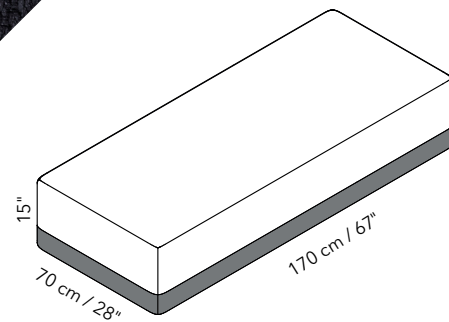
Larger swatches found on page 187

MODEL: 7DCL6-F8-XXX
FIBER 8 BOUCLÈ



Larger swatches found on page 187

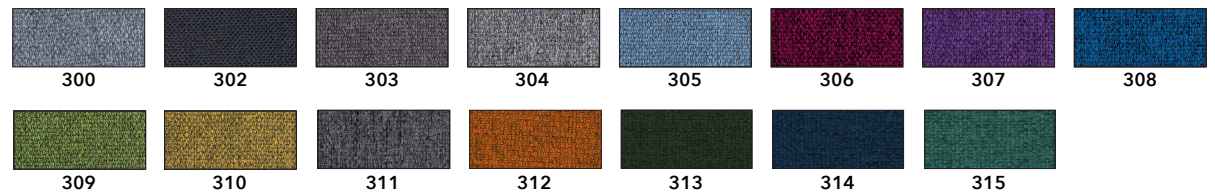
Fiber 3 Anthracite color fabric skirting board included on bottom



VOLUMI - MODULAR OTTOMAN (LRG)
MODEL: 7DCL6A

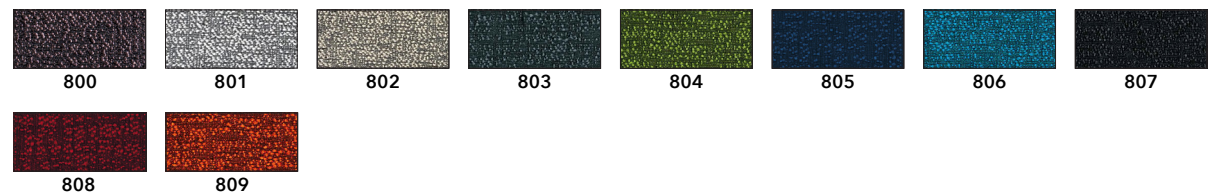
Connecting Joint Hardware on pg. 197

MODEL: 7DCL6A-F3-XXX
FIBER 3 MELANGE

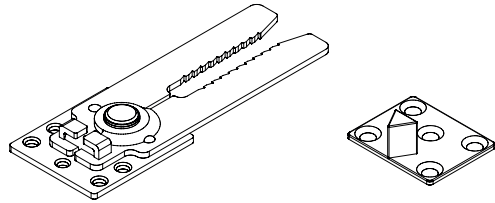


Larger swatches found on page 187

MODEL: 7DCL6A-F8-XXX
FIBER 8 BOUCLÈ



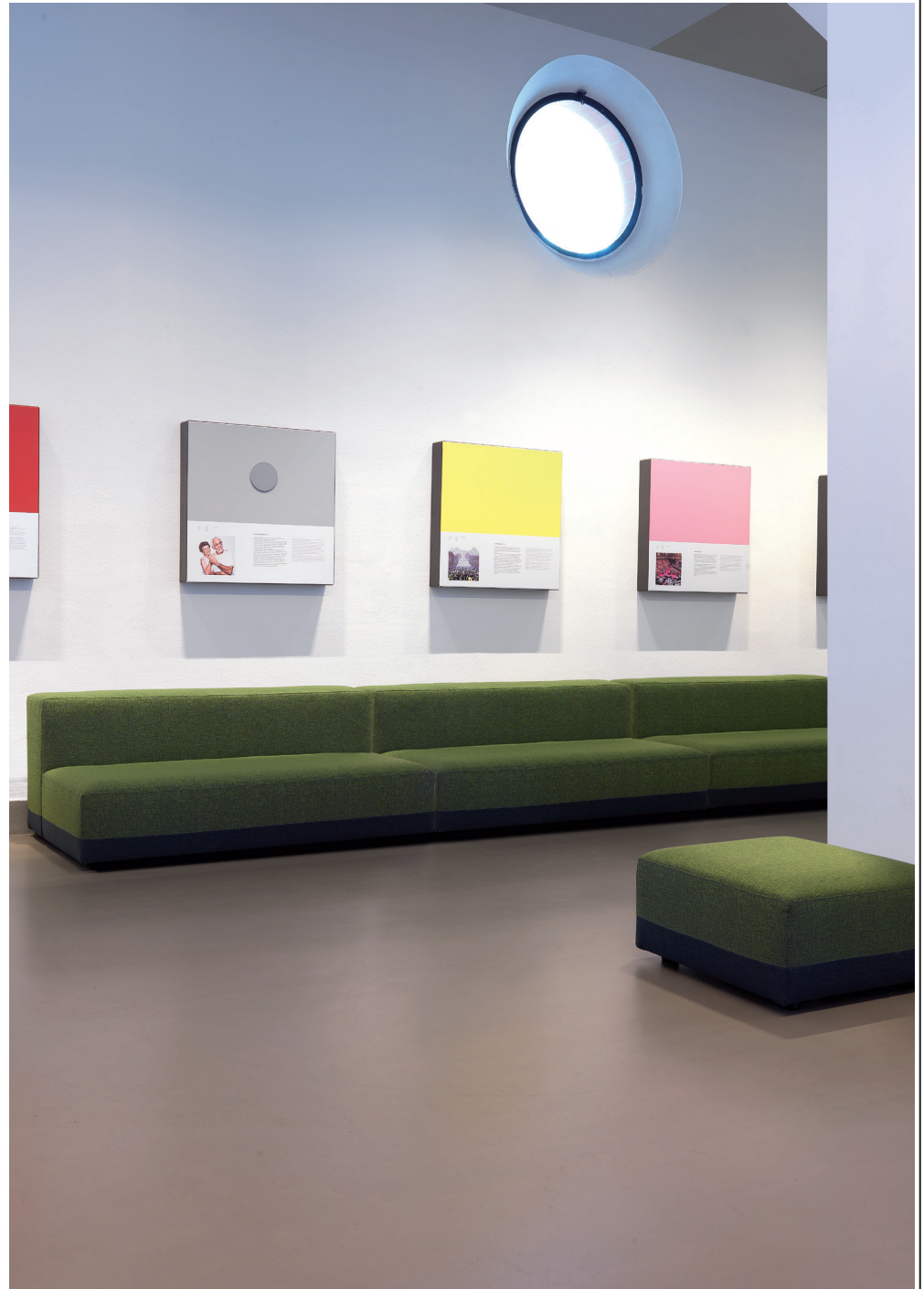
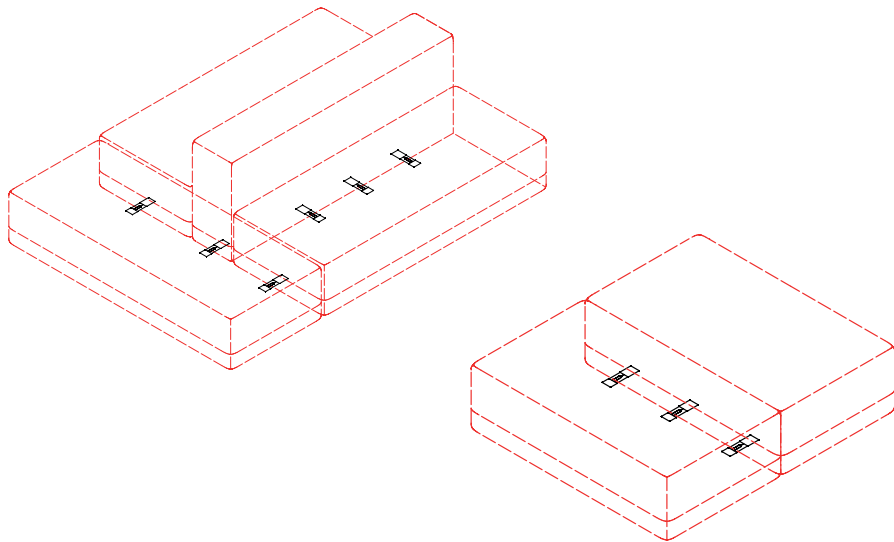
Larger swatches found on page 187



VOLUMI CONNECT JOINT

| SOFA SIZE | PART# | QTY | FINISH |
|-----------|-------|-----|--------|
| ALL SIZES | 7DCOC | 1 | STEEL |

VOLUMI TYPICALS

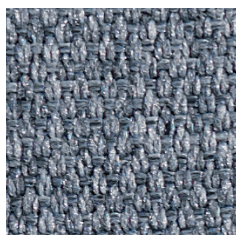




SNOWPOUF

SNOWPOUF is a sound-absorbing table top consisting of wooden structure upholstered with sound-absorbing technopolymer, external covering in Snowsound-Fiber Textiles 3 Melange fabric. Coming soon in Fiber 12 finishes as well

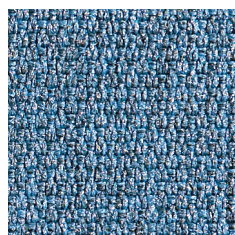
- Eco friendly - Greenguard Gold and Declare Label LBC Red List Free
- Class A sound absorption (ISO 354)
- Class A fire and smoke safety (UL 723/ASTM E84)
- CAL 133, 117 pass
- Patented Technology - Structure, Foam and Fabric
- BIFMA Certified X5.4-2020, Public and Lounge Seating



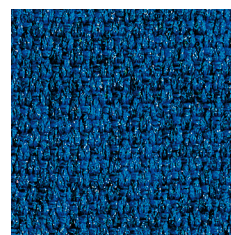
Fiber 3 Melange - 300
Gray Ice



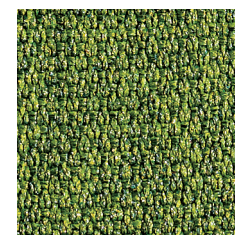
Fiber 3 Melange - 302
Anthracite



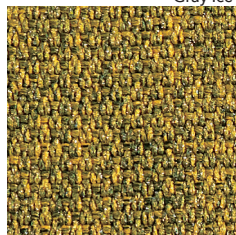
Fiber 3 Melange - 305
Azure



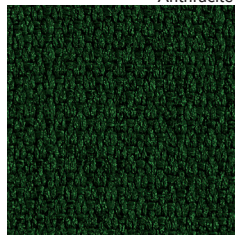
Fiber 3 Melange - 308
Gray Blue



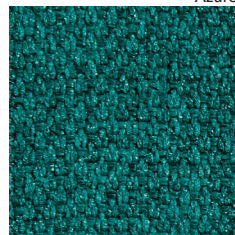
Fiber 3 Melange - 309
Gray Green



Fiber 3 Melange - 310
Gray Gold

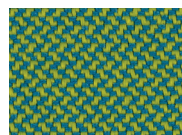


Fiber 3 Melange - 313
Evergreen

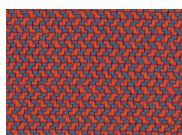


Fiber 3 Melange - 315
Fiji

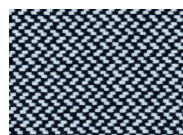
SNOWPOUF FIBER TEXTILES



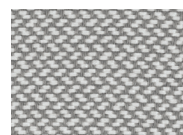
Fiber 12 Velo - 1200



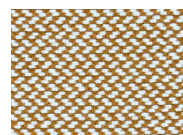
Fiber 12 Velo - 1201



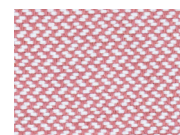
Fiber 12 Velo - 1202



Fiber 12 Velo - 1203



Fiber 12 Velo - 1204

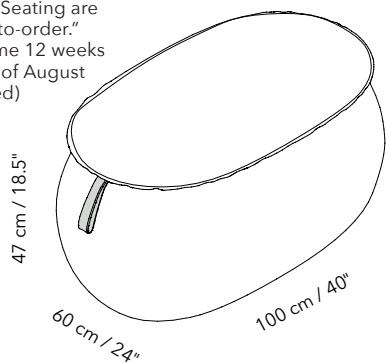


Fiber 12 Velo - 1205

COMING
SOON!

NOTE ON LEAD TIME: DUE TO THE CUSTOM-MADE NATURE OF THE FOLLOWING PRODUCTS, THE LEAD TIME IS 12 WEEKS (MONTH OF AUGUST EXCLUDED).

All Soft Seating are
"made-to-order."
Lead time 12 weeks
(month of August
excluded)



SNOWPOUF - OVAL
MODEL: 7SN2



MODEL: 7SN2-F3-XXX
FIBER 3 MELANGE



300



302



305



308



309



310



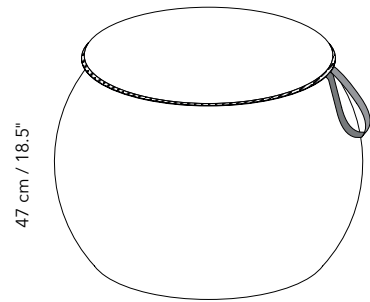
313



315

Larger swatches found above

NOTE ON LEAD TIME: DUE TO THE CUSTOM-MADE NATURE OF THE FOLLOWING PRODUCTS, THE LEAD TIME IS 12 WEEKS (MONTH OF AUGUST EXCLUDED).



47 cm / 18.5"

ø 55 cm / 22"

SNOWPOUF - POUF
MODEL: 7SN1



MODEL: 7SN1-F3-XXX
FIBER 3 MELANGE



300

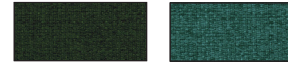
302

305

308

309

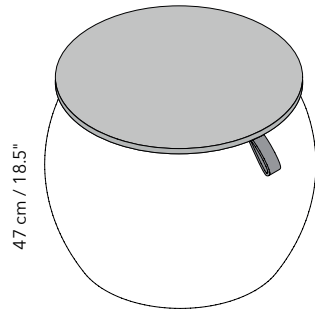
310



313

315

Larger swatches found on page 199



47 cm / 18.5"

ø 55 cm / 22"

SNOWPOUF - TABLE TOP
MODEL: 7SN3

Table top in light oak wood



MODEL: 7SN3-F3-XXX
FIBER 3 MELANGE



300

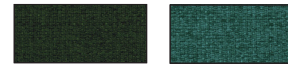
302

305

308

309

310



313

315

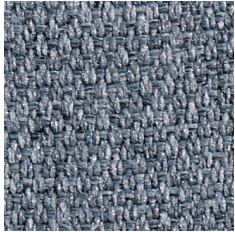
Larger swatches found on page 199



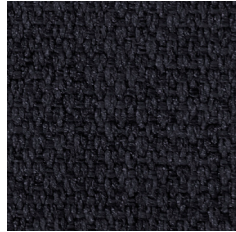
**FULCRO**

FULCRO is a sound-absorbing table top consisting of wooden structure upholstered with sound-absorbing technopolymer, external covering in Snowsound-Fiber Textiles 3 Melange or Fiber 8 Bouclé fabric. Table top comes in cement, white HPL or light oak wood.

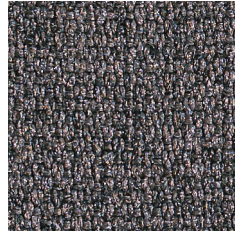
- Eco friendly - Greenguard Gold and Declare Label LBC Red List Free
- Class A sound absorption (ISO 354)
- Class A fire and smoke safety (UL 723/ASTM E84)
- CAL 133, 117 pass
- Patented Technology - Structure, Foam and Fabric
- BIFMA Certified X5.4-2020, Public and Lounge Seating



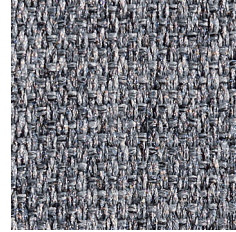
Fiber 3 Melange - 300
Gray Ice



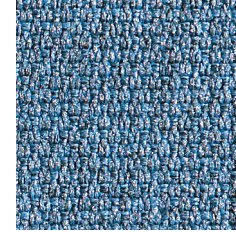
Fiber 3 Melange - 302
Anthracite



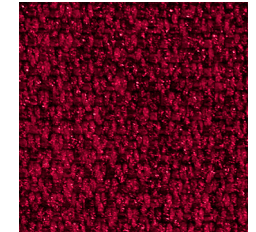
Fiber 3 Melange - 303
Gray Taupe



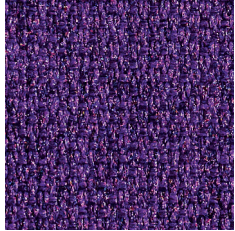
Fiber 3 Melange - 304
Gray Beige



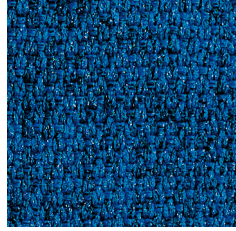
Fiber 3 Melange - 305
Azure



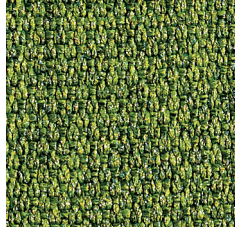
Fiber 3 Melange - 306
Gray Burgundy



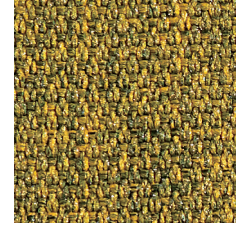
Fiber 3 Melange - 307
Gray Plum



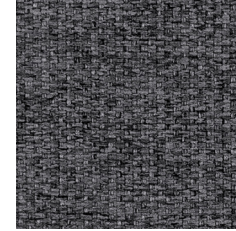
Fiber 3 Melange - 308
Gray Blue



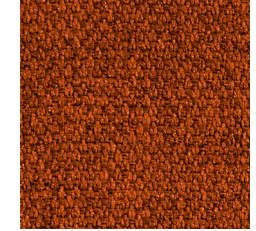
Fiber 3 Melange - 309
Gray Green



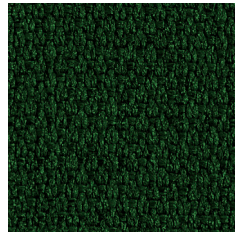
Fiber 3 Melange - 310
Gray Gold



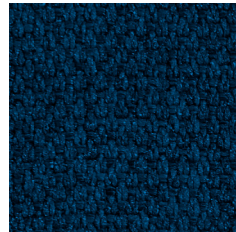
Fiber 3 Melange - 311
Carbon Gray



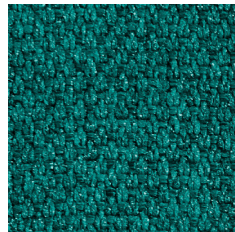
Fiber 3 Melange - 312
Patina



Fiber 3 Melange - 313
Evergreen



Fiber 3 Melange - 314
Admiral Blue



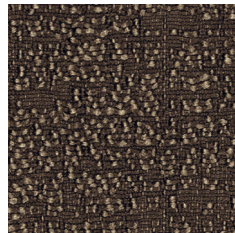
Fiber 3 Melange - 315
Fiji



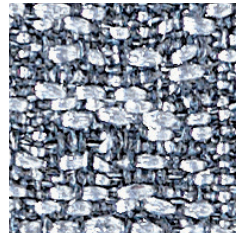
Fiber 3 Melange - 316
Ivory

COMING
SOON!

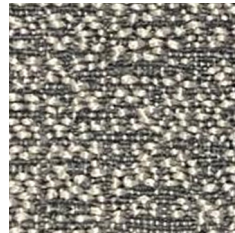
FULCRO FIBER TEXTILES



Fiber 8 Bouclé - 800
Dove Coffee



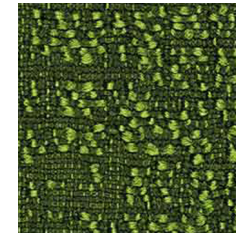
Fiber 8 Bouclé - 801
Gray Ice



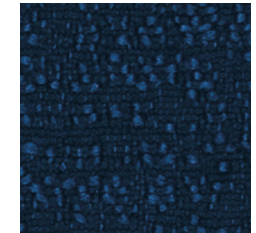
Fiber 8 Bouclé - 802
Gray Beige



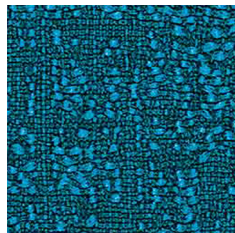
Fiber 8 Bouclé - 803
Graphite



Fiber 8 Bouclé - 804
Clover



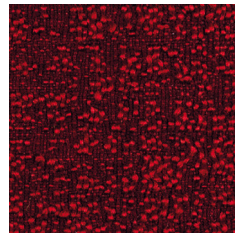
Fiber 8 Bouclé - 805
Oxford



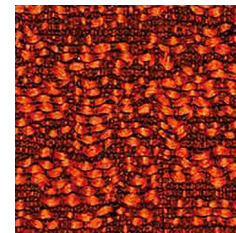
Fiber 8 Bouclé - 806
Syreni Blue



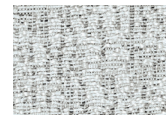
Fiber 8 Bouclé - 807
Obsidian



Fiber 8 Bouclé - 808
Garnet



Fiber 8 Bouclé - 809
Sandstone



Fiber 8 Bouclé - 810



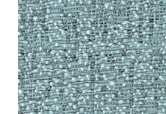
Fiber 8 Bouclé - 811



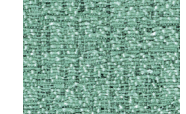
Fiber 8 Bouclé - 812



Fiber 8 Bouclé - 813



Fiber 8 Bouclé - 814



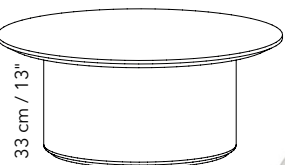
Fiber 8 Bouclé - 815

COMING
SOON!

NOTE ON LEAD TIME: DUE TO THE CUSTOM-MADE NATURE OF THE FOLLOWING PRODUCTS, THE LEAD TIME IS 12 WEEKS (MONTH OF AUGUST EXCLUDED).

All Soft Seating are "made-to-order."
Lead time 12 weeks (month of August excluded)

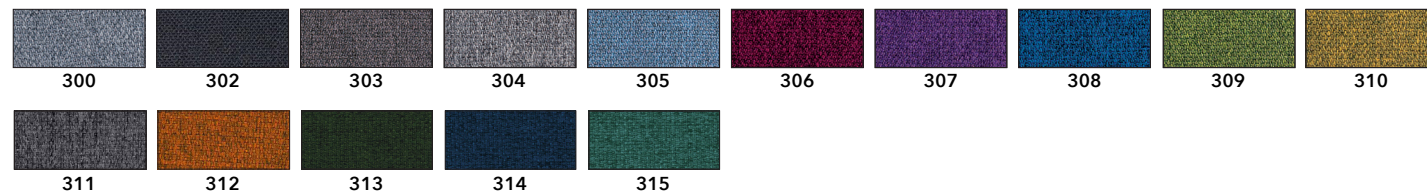
ø 80 cm / 31.5"



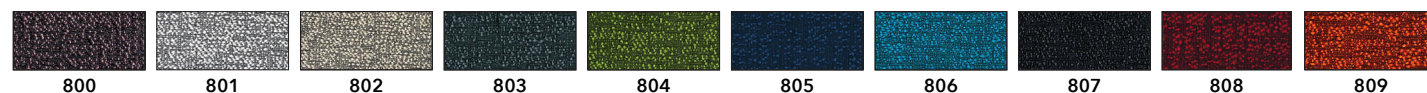
FULCRO
(13"H) WHITE HPL TABLE TOP
MODEL: 7TB33B

MODEL: 7TB33B-FX-XXX

FIBER 3 MELANGE

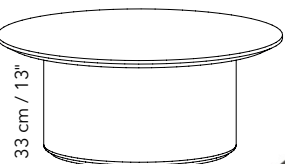


FIBER 8 BOUCLÈ



Larger swatches found on page 202

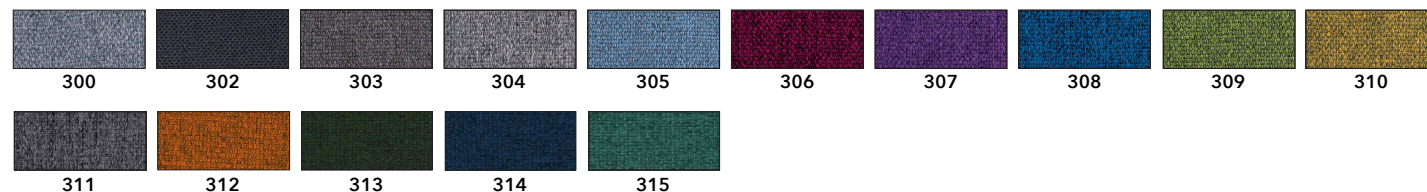
ø 80 cm / 31.5"



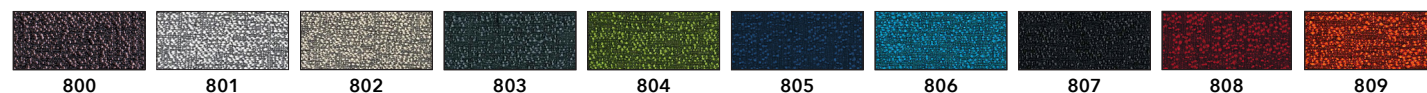
FULCRO
(13"H) CEMENT TABLE TOP
MODEL: 7TB33C

MODEL: 7TB33C-FX-XXX

FIBER 3 MELANGE

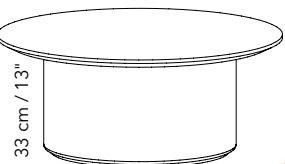


FIBER 8 BOUCLÈ



Larger swatches found on page 202

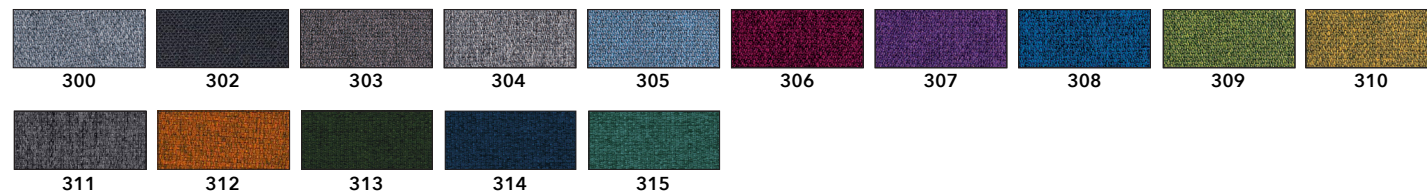
ø 80 cm / 31.5"



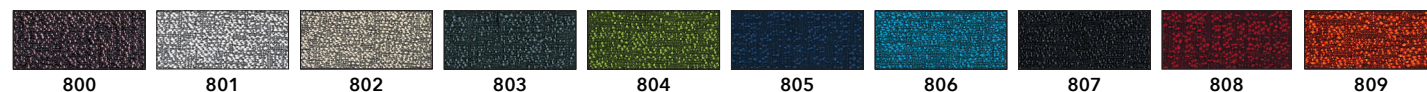
FULCRO
(13"H) LIGHT OAK TABLE TOP
MODEL: 7TB33R

MODEL: 7TB33R-FX-XXX

FIBER 3 MELANGE



FIBER 8 BOUCLÈ

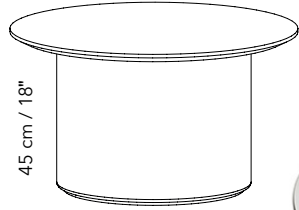


Larger swatches found on page 202

NOTE ON LEAD TIME: DUE TO THE CUSTOM-MADE NATURE OF THE FOLLOWING PRODUCTS, THE LEAD TIME IS 12 WEEKS (MONTH OF AUGUST EXCLUDED).

All Soft Seating are "made-to-order." Lead time 12 weeks (month of August excluded)

ø 80 cm / 31.5"

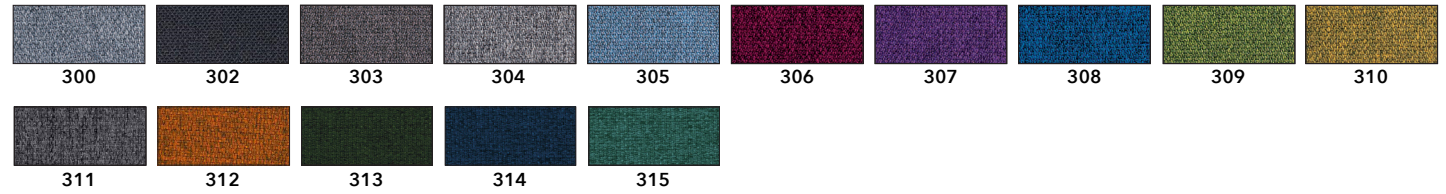


FULCRO

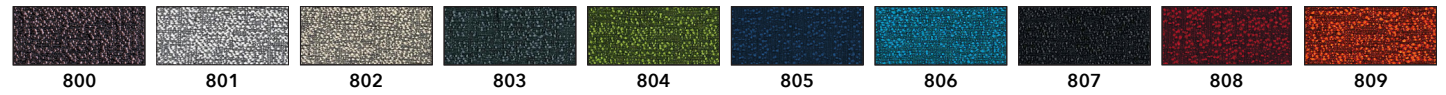
(18"H) WHITE HPL TABLE TOP
MODEL: 7TB45B

MODEL: 7TB45B-FX-XXX

FIBER 3 MELANGE

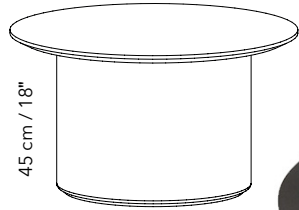


FIBER 8 BOUCLÈ



Larger swatches found on page 202

ø 80 cm / 31.5"

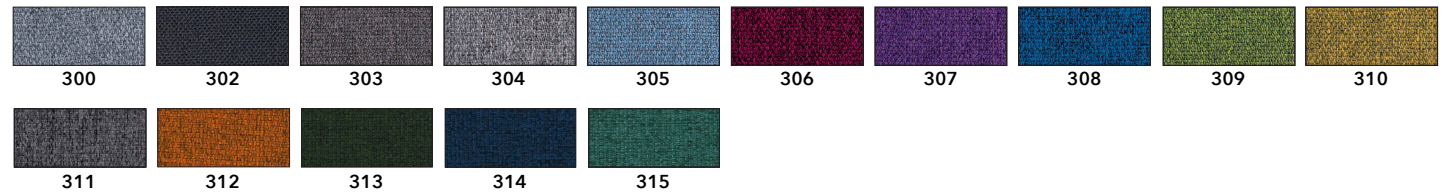


FULCRO

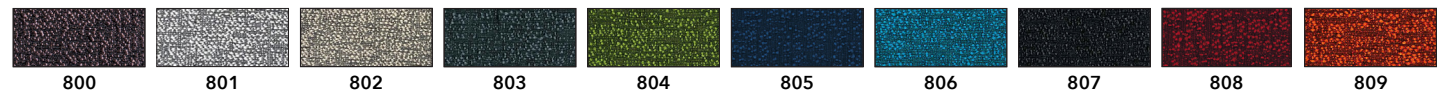
(18"H) CEMENT TABLE TOP
MODEL: 7TB45C

MODEL: 7TB45C-FX-XXX

FIBER 3 MELANGE

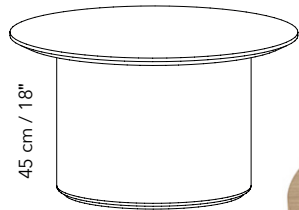


FIBER 8 BOUCLÈ



Larger swatches found on page 202

ø 80 cm / 31.5"

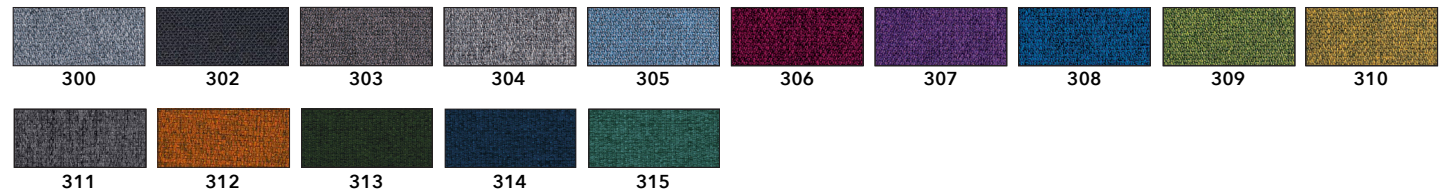


FULCRO

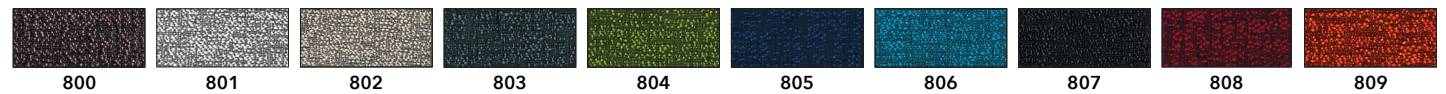
(18"H) LIGHT OAK TABLE TOP
MODEL: 7TB45R

MODEL: 7TB45R-FX-XXX

FIBER 3 MELANGE



FIBER 8 BOUCLÈ



Larger swatches found on page 202

A+E TECHNOLOGY

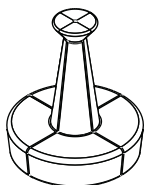
Acoustic + Electromagnetic Reduction

Metallized high-tech polymer fabric with pure silver for radio frequency reduction. Specifically designed to reduce the power of electromagnetic fields. However, it doesn't completely obstruct signals, allowing the use of smartphones and Wi-Fi networks. This radio frequency reducing fabric can be included inside sofas and other sound absorbing elements, combining sound absorption with reduction of electromagnetic fields. A new patented technology for the well-being of people.

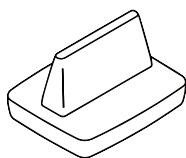
| Standard Standard | Frequenza MHz (Start-Stop) Frequency | Residual signal power |
|-------------------|--------------------------------------|-----------------------|
| GSM / 850 | 825-895 | 0.85% |
| GSM / 900 | 870-960 | 3.34% |
| UMTS | 1920-2170 | 0.56% |
| LTE | 2510-2690 | 0.30% |
| WIFI | 2400-2500 | 0.60% |
| 5G | 3400-3800 | 0.79% |
| WIFI | 5100-5800 | 0.75% |



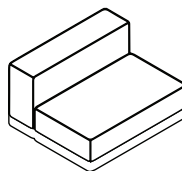
Available for



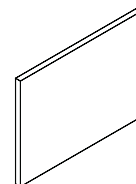
SNOWKING
Page: 184



NAPWORK
Page: 176



VOLUMI
Page: 186



SNOW CUSTOM
Page: 162



Optional
A+E