



SNOWSOUND[®]
Acoustics & Well-Being Technologies

VOLUMI
ACOUSTIC SOFA

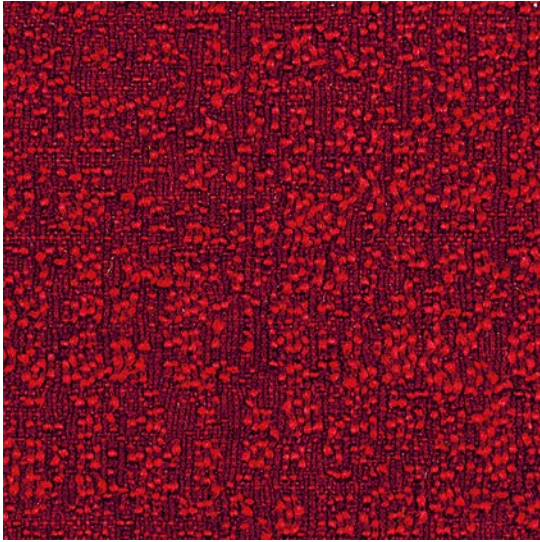
DESIGNER

Snowsound Lab

A modular collection of sound-absorbing furniture distinguished by visually squared lines, yet with great softness to the touch. A band of anthracite-colored fabric in the lower part creates a sill and an interesting chromatic play that accompanies all the elements. The optimal use of Snowsound-Fiber sound-absorbing upholstery achieves excellent acoustic performance.



VOLUMI

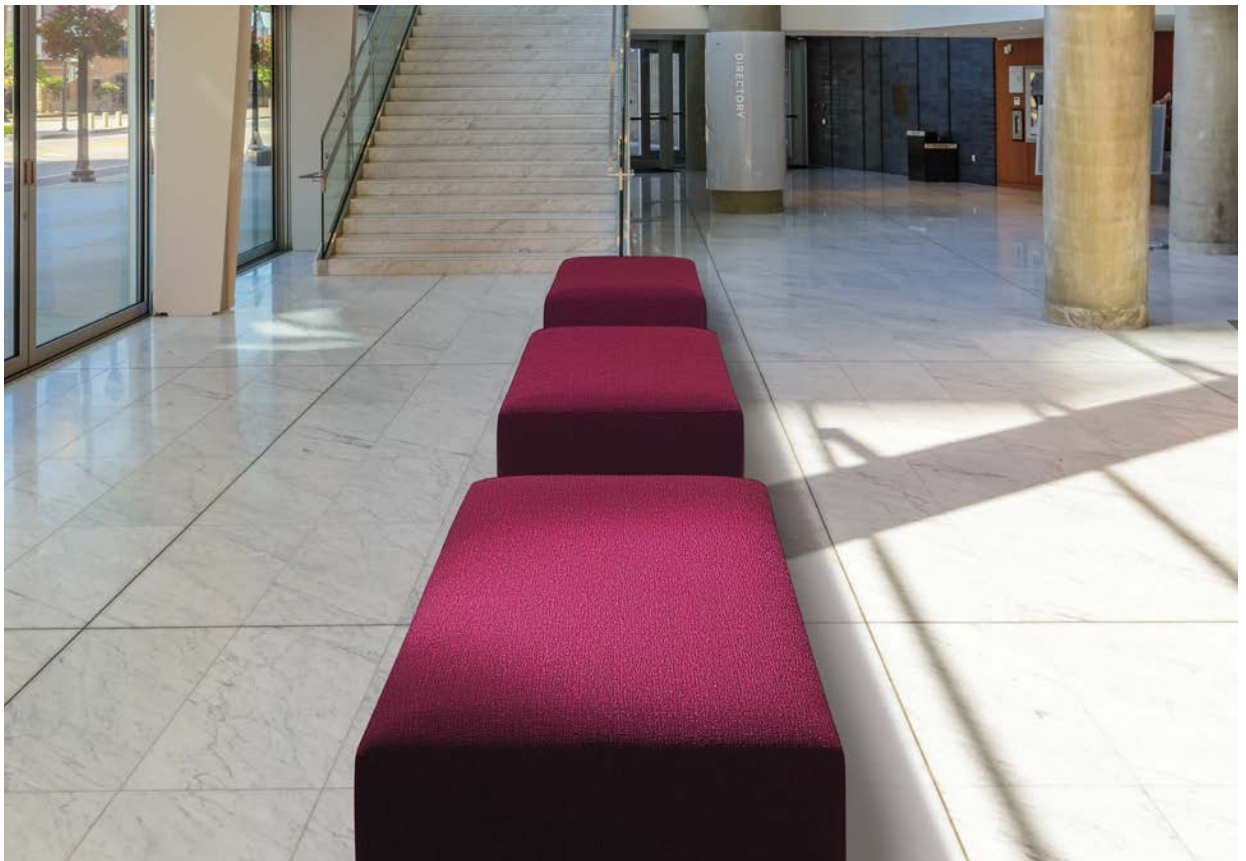


VOLUMI

A modular system of upholstered sound-absorbing seats with a supporting structure made of wooden material and elastic belts, dimensioned to independently absorb low frequencies. The seats are covered with sound-absorbing polyurethane and polyester, combined with upholstery in sound-absorbing Snowsound Fiber fabric made of polyester fibers, allowing the seat to absorb different frequencies in the best possible way.

The outer fabric cover is removable.

The seats are available with and without a dark grey fabric strip at the base to act as a heel stop and can be joined together using metal fittings.



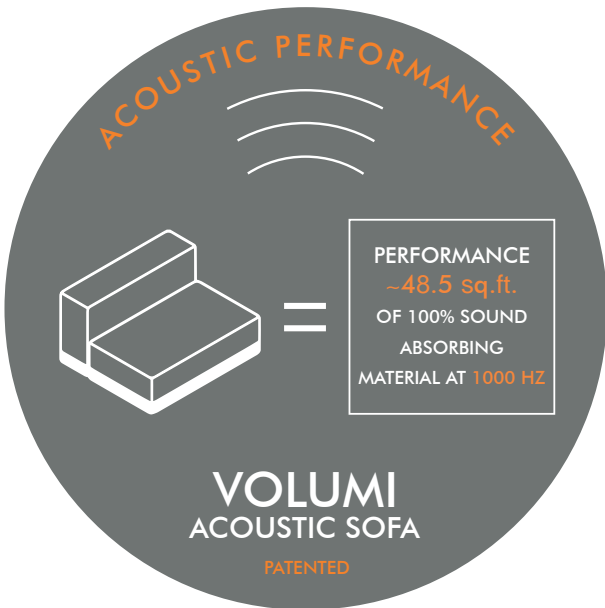
VOLUMI



VOLUMI



VOLUMI





A+E TECHNOLOGY | ELECTROMAGNETIC REDUCTION (Optional)

Metallized high-tech polymer fabric with pure silver for radio frequency reduction. Specifically designed to reduce the power of electromagnetic fields. However, it doesn't completely obstruct signals, allowing the use of smartphones and Wi-Fi networks. This radio frequency reducing fabric can be included inside sofas and other sound absorbing elements, combining sound absorption with reduction of electromagnetic fields. A new patented technology for the well-being of people.

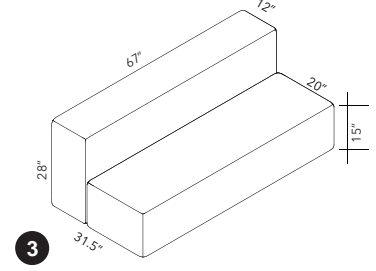
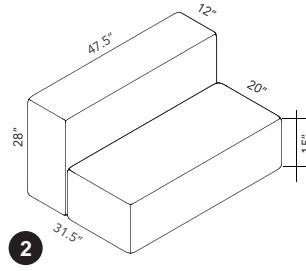
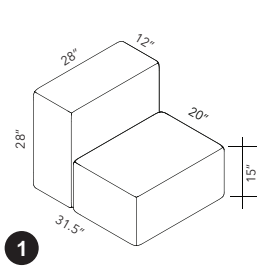
Standard Standard	Frequenza MHz (Start-Stop) Frequency	Residual signal power
GSM / 850	825-895	0.85%
GSM / 900	870-960	3.34%
UMTS	1920-2170	0.56%
LTE	2510-2690	0.30%
WIFI	2400-2500	0.60%
5G	3400-3800	0.79%
WIFI	5100-5800	0.75%



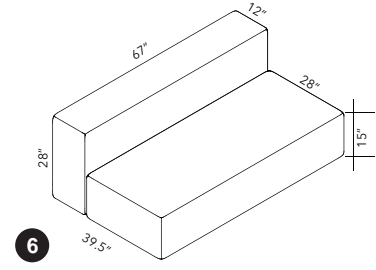
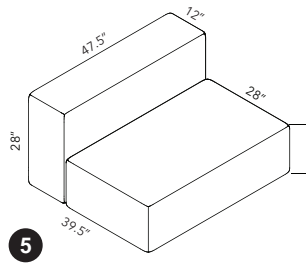
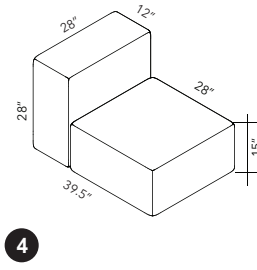
PRODUCT SPECS

VOLUMI SOFA

- 1 MODEL: 7DCL9
- 2 MODEL: 7DCL10
- 3 MODEL: 7DCL11

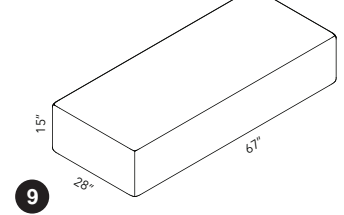
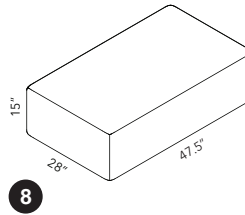
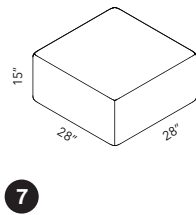


- 4 MODEL: 7DCL1
- 5 MODEL: 7DCL2
- 6 MODEL: 7DCL3



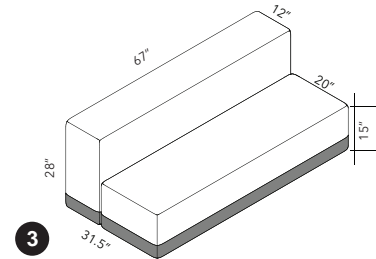
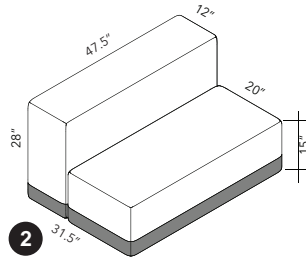
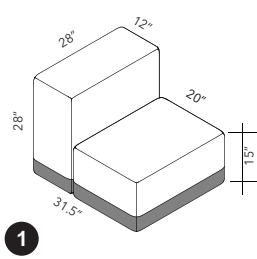
VOLUMI OTTOMAN

- 7 MODEL: 7DCL4
- 8 MODEL: 7DCL5
- 9 MODEL: 7DCL6

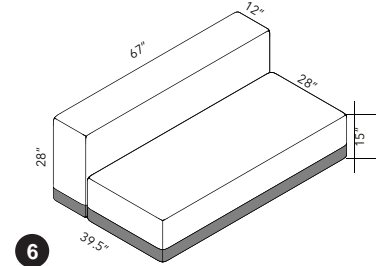
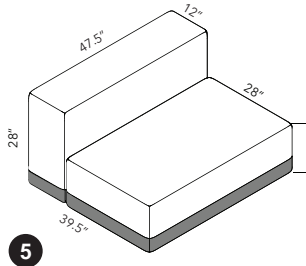
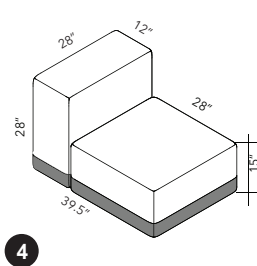


VOLUMI SOFA
ANTHRACITE-COLORED
FABRIC BAND

- 1 MODEL: 7DCL9A
- 2 MODEL: 7DCL10A
- 3 MODEL: 7DCL11A

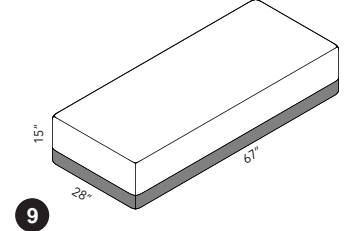
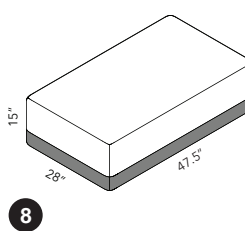
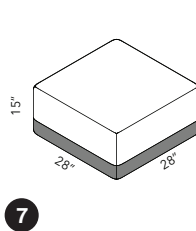


- 4 MODEL: 7DCL1A
- 5 MODEL: 7DCL2A
- 6 MODEL: 7DCL3A



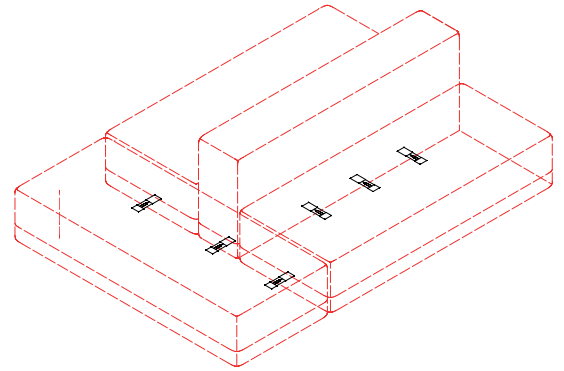
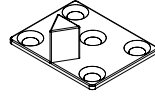
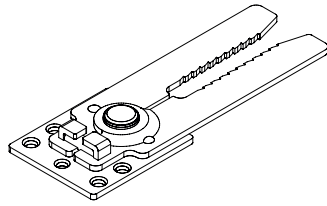
VOLUMI OTTOMAN
ANTHRACITE-COLORED
FABRIC BAND

- 7 MODEL: 7DCL4A
- 8 MODEL: 7DCL5A
- 9 MODEL: 7DCL6A



CONNECTING HARDWARE

MODEL: 7DCOC

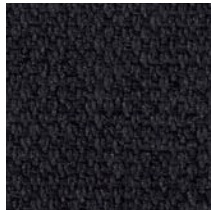


Example of using VOLUMI Connection Joint

FIBER COLORS



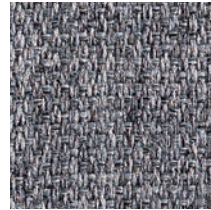
Fiber 3 Melange - 300
Gray Ice



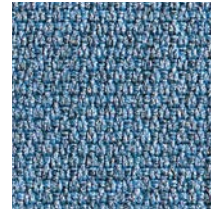
Fiber 3 Melange - 302
Anthracite



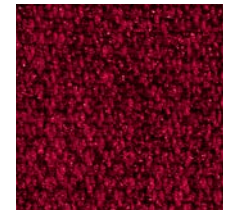
Fiber 3 Melange - 303
Gray Taupe



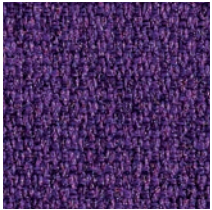
Fiber 3 Melange - 304
Gray Beige



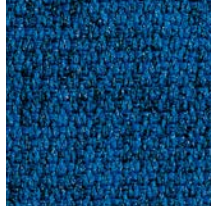
Fiber 3 Melange - 305
Azure



Fiber 3 Melange - 306
Gray Burgundy



Fiber 3 Melange - 307
Gray Plum



Fiber 3 Melange - 308
Gray Blue



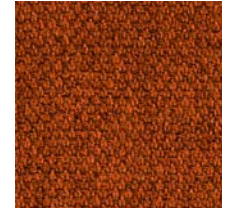
Fiber 3 Melange - 309
Gray Green



Fiber 3 Melange - 310
Gray Gold



Fiber 3 Melange - 311
Carbon Gray



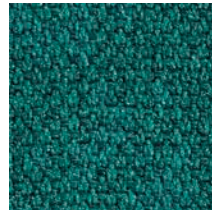
Fiber 3 Melange - 312
Patina



Fiber 3 Melange - 313
Evergreen



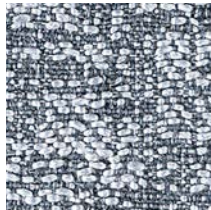
Fiber 3 Melange - 314
Admiral Blue



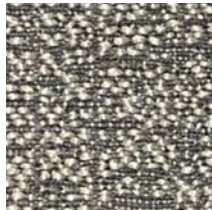
Fiber 3 Melange - 315
Fiji



Fiber 8 Bouclé - 800
Dove Coffee



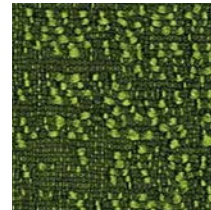
Fiber 8 Bouclé - 801
Gray Ice



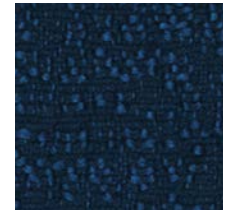
Fiber 8 Bouclé - 802
Gray Beige



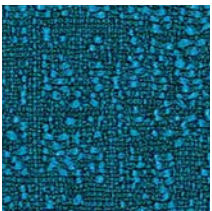
Fiber 8 Bouclé - 803
Graphite



Fiber 8 Bouclé - 804
Clover



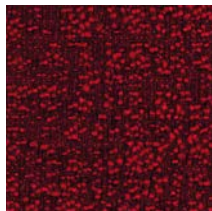
Fiber 8 Bouclé - 805
Oxford



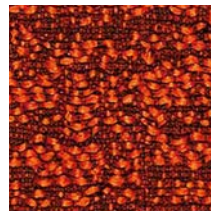
Fiber 8 Bouclé - 806
Syreni Blue



Fiber 8 Bouclé - 807
Obsidian



Fiber 8 Bouclé - 808
Garnet



Fiber 8 Bouclé - 809
Sandstone

VOLUMI

<p>PHYSICAL PROPERTIES FIBER 3 MELANGE</p> <p>Content: 100% Inherently Fire Resistant, Acoustic Sound Absorbing Polyester Fibers with Patented Snowsound Technology</p>	<p>PHYSICAL PROPERTIES OF FIBER 8 BOUCLÉ</p> <p>Content: 100% Inherently Fire Resistant, Acoustic Sound Absorbing Polyester Fibers with Patented Snowsound Technology</p>
<p>ACOUSTIC PERFORMANCE AND NOISE REDUCTION RATING</p> <p>Absorption Coefficient and NRC: See test data document</p>	<p>ACOUSTIC PERFORMANCE AND NOISE REDUCTION RATING</p> <p>Absorption Coefficient and NRC: See test data document</p>
<p>PERFORMANCE</p> <p>Flame Resistance: Passes NFPA 701 // NFPA 260 // CAL. TB 117 // UL 723 Class A // ASTM E 84 Class A</p> <p>Environment: 100% Recyclable and GREENGUARD GOLD Certified, LEED v4 Credits and Certification, Declare Label, LBC Red List Free</p> <p>Colorfastness to Light: Grade 7 - "Outstanding" (Passes AATCC 16 / ISO 105-B02:2014)</p> <p>Propensity to Surface Fuzzing and Pilling: Grade 5 - "no change" (Passes ISO 12945-2:2002)</p>	<p>PERFORMANCE</p> <p>Flame Resistance: Passes NFPA 701 // NFPA 260 // CAL. TB 117 // UL 723 Class A // ASTM E 84 Class A</p> <p>Environment: 100% Recyclable and GREENGUARD GOLD Certified, LEED v4 Credits and Certification, Declare Label, LBC Red List Free</p> <p>Colorfastness to Light: Grade 6/7 - "Excellent" (Passes AATCC 16 / ISO 105-B02:2014)</p> <p>Propensity to Surface Fuzzing and Pilling: Grade 5 - "no change" (Passes ISO 12945-2:2002)</p>

A+E TECHNOLOGY, ELECTROMAGNETIC REDUCTION (OPTIONAL)

The sofa is designed to accommodate a layer of RF-reducing fabric inside upon request.

The inner cover consists of a layer of radio frequency-reducing fabric made of technopolymer metalized with pure silver. This fabric is capable of reducing radio frequencies without completely obstructing signals, allowing smartphones and Wi-Fi networks to continue functioning. The radio-frequency reducing fabric is inserted into the seats between the frame and the upholstery, enabling the combination of functions for both acoustic reverberation reduction and radio-frequency reduction. This represents a new patented technology designed for people's well-being.



SNOWSOUND®

Acoustics & Well-Being Technologies

U.S.A / Canada / Mexico

Snowsound USA
10018 Santa Fe Springs Road
Santa Fe Springs, CA 90670
Tel. 562.903.9550
info@snowsoundusa.com
www.snowsoundusa.com

Los Angeles Showroom

Pacific Design Center, Green Building
8687 Melrose Avenue
1st Floor, Suite G-152
West Hollywood, CA 90069

Chicago Showroom

222 Merchandise Mart Plaza
Floor 11, Suite 1197
Chicago, IL 60654 USA

New York Showroom

New York Design Center (NYDC)
200 Lexington Ave
Floor 11, Suite 1106
New York, NY 10016 USA



Declare.

SCAN FOR MORE PRODUCTS



HEAR THE DIFFERENCE



Follow us: @snowsoundusa



www.snowsoundusa.com

©2024 Snowsound USA. All rights reserved.