



SNOWSOUND[®]
Acoustics & Well-Being Technologies

SNOWKING
ACOUSTIC SOFA

SNOWKING

DESIGNER

(a+b) Dominoni, Quaquaro

“More than a sofa, we thought about a silent character who solemnly occupies corners (that tend to be spaces looking for a purpose) and affirms a strong stage presence while providing a precious contribution to the acoustic well-being of the community. When he finds himself with other elements of his family, they join to form islands, delimiting spaces, suggesting noble perspectives just like him: Snowking!”

(Annalisa Dominoni, Benedetto Quaquaro)



SNOWKING

SNOWKING

A modular system of upholstered sound-absorbing seats with a supporting structure made of shaped wooden material designed to independently absorb low frequencies. The seats are covered with sound-absorbing polyurethane and polyester, combined with upholstery in sound-absorbing Snowsound Fiber 3 Melange and Fiber 6 Velvet fabrics made of polyester fibers. This combination allows the seat to effectively absorb different frequencies in the best possible way.

The connection between two or more seats is established in the upper part by means of painted steel connectors screwed to the backrest structure and placed between the backrests and the crowns. In the lower part, the connection is made by means of metal attachments.



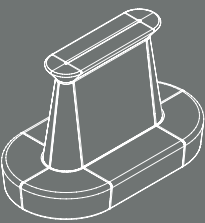
SNOWKING



SNOWKING

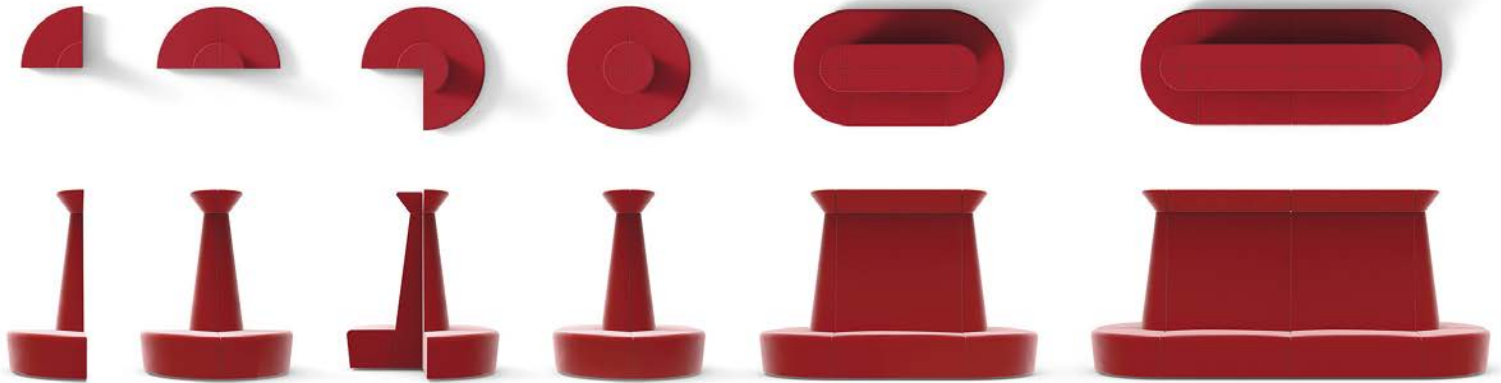


ACOUSTIC PERFORMANCE



PERFORMANCE
~150 sq.ft.
OF 100% SOUND
ABSORBING
MATERIAL AT 1000 HZ

SNOWKING
ACOUSTIC SOFA
PATENTED



CONFIGURATION EXAMPLES

A+E TECHNOLOGY | ELECTROMAGNETIC REDUCTION (Optional)

Metallized high-tech polymer fabric with pure silver for radio frequency reduction. Specifically designed to reduce the power of electromagnetic fields. However, it doesn't completely obstruct signals, allowing the use of smartphones and Wi-Fi networks. This radio frequency reducing fabric can be included inside sofas and other sound absorbing elements, combining sound absorption with reduction of electromagnetic fields. A new patented technology for the well-being of people.

Standard Standard	Frequenza MHz (Start-Stop) Frequency	Residual signal power
GSM / 850	825-895	0.85%
GSM / 900	870-960	3.34%
UMTS	1920-2170	0.56%
LTE	2510-2690	0.30%
WIFI	2400-2500	0.60%
5G	3400-3800	0.79%
WIFI	5100-5800	0.75%



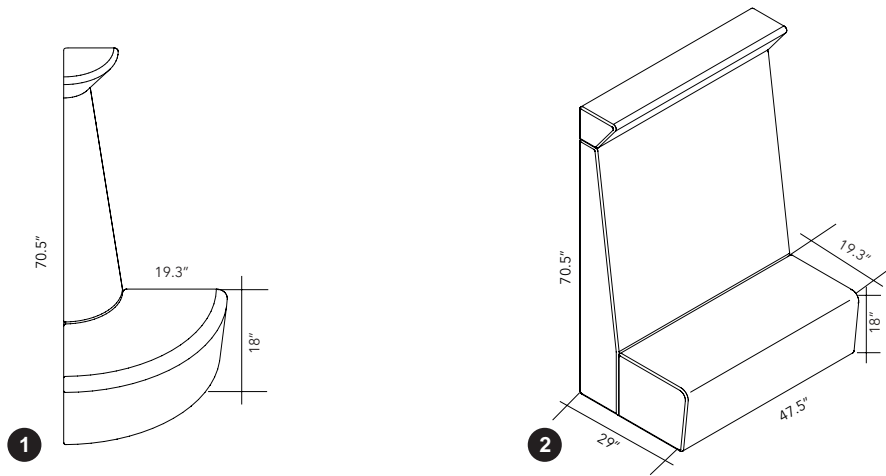
SNOWKING

PRODUCT SPECS

SNOWKING

1 MODEL: 7DDQ1

2 MODEL: 7DDQ2



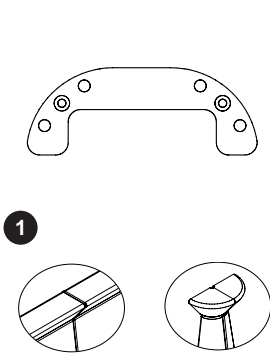
CONNECTING HARDWARE

1 MODEL: 7DDQP2

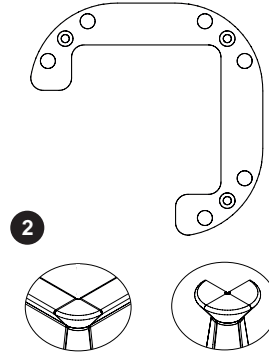
2 MODEL: 7DDQP3

3 MODEL: 7DDQP4

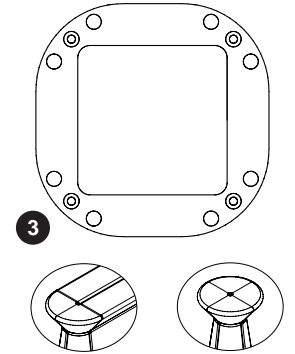
CONNECTS 2 SNOWKING SOFAS



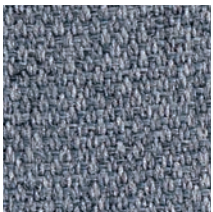
CONNECTS 3 SNOWKING SOFAS



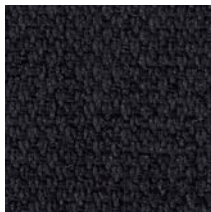
CONNECTS 4 SNOWKING SOFAS



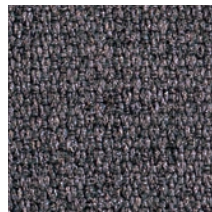
FIBER COLORS



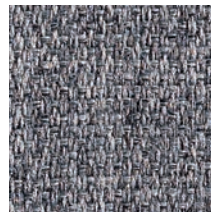
Fiber 3 Melange - 300
Gray Ice



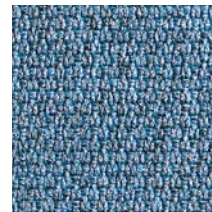
Fiber 3 Melange - 302
Anthracite



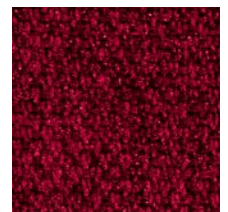
Fiber 3 Melange - 303
Gray Taupe



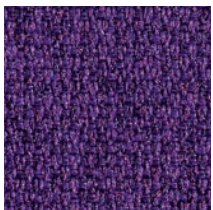
Fiber 3 Melange - 304
Gray Beige



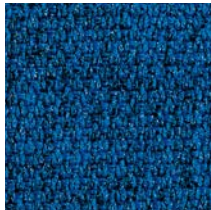
Fiber 3 Melange - 305
Azure



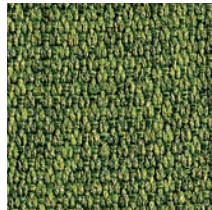
Fiber 3 Melange - 306
Gray Burgundy



Fiber 3 Melange - 307
Gray Plum



Fiber 3 Melange - 308
Gray Blue



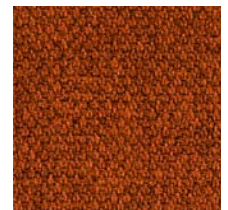
Fiber 3 Melange - 309
Gray Green



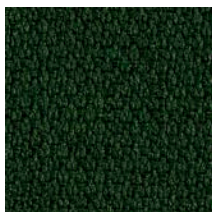
Fiber 3 Melange - 310
Gray Gold



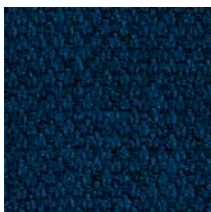
Fiber 3 Melange - 311
Carbon Gray



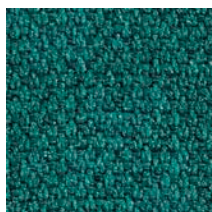
Fiber 3 Melange - 312
Patina



Fiber 3 Melange - 313
Evergreen



Fiber 3 Melange - 314
Admiral Blue



Fiber 3 Melange - 315
Fiji

SNOWKING

FIBER COLORS



Fiber 6 Velvet - 600
Red



Fiber 6 Velvet - 601
Coffee Brown



Fiber 6 Velvet - 602
Black



Fiber 6 Velvet - 603
Teal



Fiber 6 Velvet - 604
Beige



Fiber 6 Velvet - 605
Cream



Fiber 6 Velvet - 606
Powder Pink



Fiber 6 Velvet - 607
Medium Gray



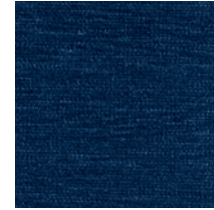
Fiber 6 Velvet - 608
Forest Green



Fiber 6 Velvet - 609
Powder Blue



Fiber 6 Velvet - 610
Mustard Gold



Fiber 6 Velvet - 611
Navy Blue

<p>PHYSICAL PROPERTIES FIBER 3 MELANGE</p> <p>Content: 100% Inherently Fire Resistant, Acoustic Sound Absorbing Polyester Fibers with Patented Snowsound Technology</p>	<p>PHYSICAL PROPERTIES FIBER 6 VELVET</p> <p>Content: 100% Inherently Fire Resistant, Acoustic Sound Absorbing Polyester Fibers with Patented Snowsound Technology</p>
<p>ACOUSTIC PERFORMANCE AND NOISE REDUCTION RATING</p> <p>Absorption Coefficient and NRC: See testing data document</p>	<p>ACOUSTIC PERFORMANCE AND NOISE REDUCTION RATING</p> <p>Absorption Coefficient and NRC: See testing data document</p>
<p>PERFORMANCE</p> <p>Flame Resistance: Passes NFPA 701 // NFPA 260 // CAL. TB 117 // UL 723 Class A // ASTM E 84 Class A</p> <p>Environment: 100% Recyclable and GREENGUARD GOLD Certified, LEED v4 Credits and Certification, Declare Label, LBC Red List Free</p> <p>Colorfastness to Light: Grade 7 - "Outstanding" (Passes AATCC 16 / ISO 105-B02:2014)</p> <p>Propensity to Surface Fuzzing and Pilling: Grade 5 - "no change" (Passes ISO 12945-2:2002)</p>	<p>PERFORMANCE</p> <p>Flame Resistance: Passes NFPA 701 // NFPA 260 // CAL. TB 117 // UL 723 Class A // ASTM E 84 Class A</p> <p>Environment: 100% Recyclable and GREENGUARD GOLD Certified, LEED v4 Credits and Certification, Declare Label, LBC Red List Free</p> <p>Colorfastness to Light: Grade 6/7 - "Excellent" (Passes AATCC 16 / ISO 105-B02:2014)</p> <p>Propensity to Surface Fuzzing and Pilling: Grade 5 - "no change" (Passes ISO 12945-2:2002)</p>

A+E TECHNOLOGY, ELECTROMAGNETIC REDUCTION (OPTIONAL)

The sofa is arranged to accommodate a layer of RF-reducing fabric inside if requested.

Inner cover consisting of a layer of radio frequency reducing fabric made of technopolymer metalized with pure silver capable of reducing radio frequencies without completely obstructing signals so that smartphones and Wi-Fi networks can continue to be used. The radio-frequency reducing fabric is inserted into the seats between the frame and the upholstery, making it possible to combine the functions of acoustic reverberation reduction and radio-frequency reduction. A new patented technology designed for people's well-being.



SNOWSOUND®

Acoustics & Well-Being Technologies

U.S.A / Canada / Mexico

Snowsound USA
10018 Santa Fe Springs Road
Santa Fe Springs, CA 90670
Tel. 562.903.9550
info@snowsoundusa.com
www.snowsoundusa.com

Los Angeles Showroom

Pacific Design Center, Green Building
8687 Melrose Avenue
1st Floor, Suite G-152
West Hollywood, CA 90069

Chicago Showroom

222 Merchandise Mart Plaza
Floor 11, Suite 1197
Chicago, IL 60654 USA

New York Showroom

New York Design Center (NYDC)
200 Lexington Ave
Floor 11, Suite 1106
New York, NY 10016 USA



Declare.

SCAN FOR MORE PRODUCTS



HEAR THE DIFFERENCE



www.snowsoundusa.com

©2024 Snowsound USA. All rights reserved.

Follow us: @snowsoundusa

