



**SNOWSOUND**<sup>®</sup>  
Acoustics & Well-Being Technologies

**NAPWORK**  
ACOUSTIC SOFA

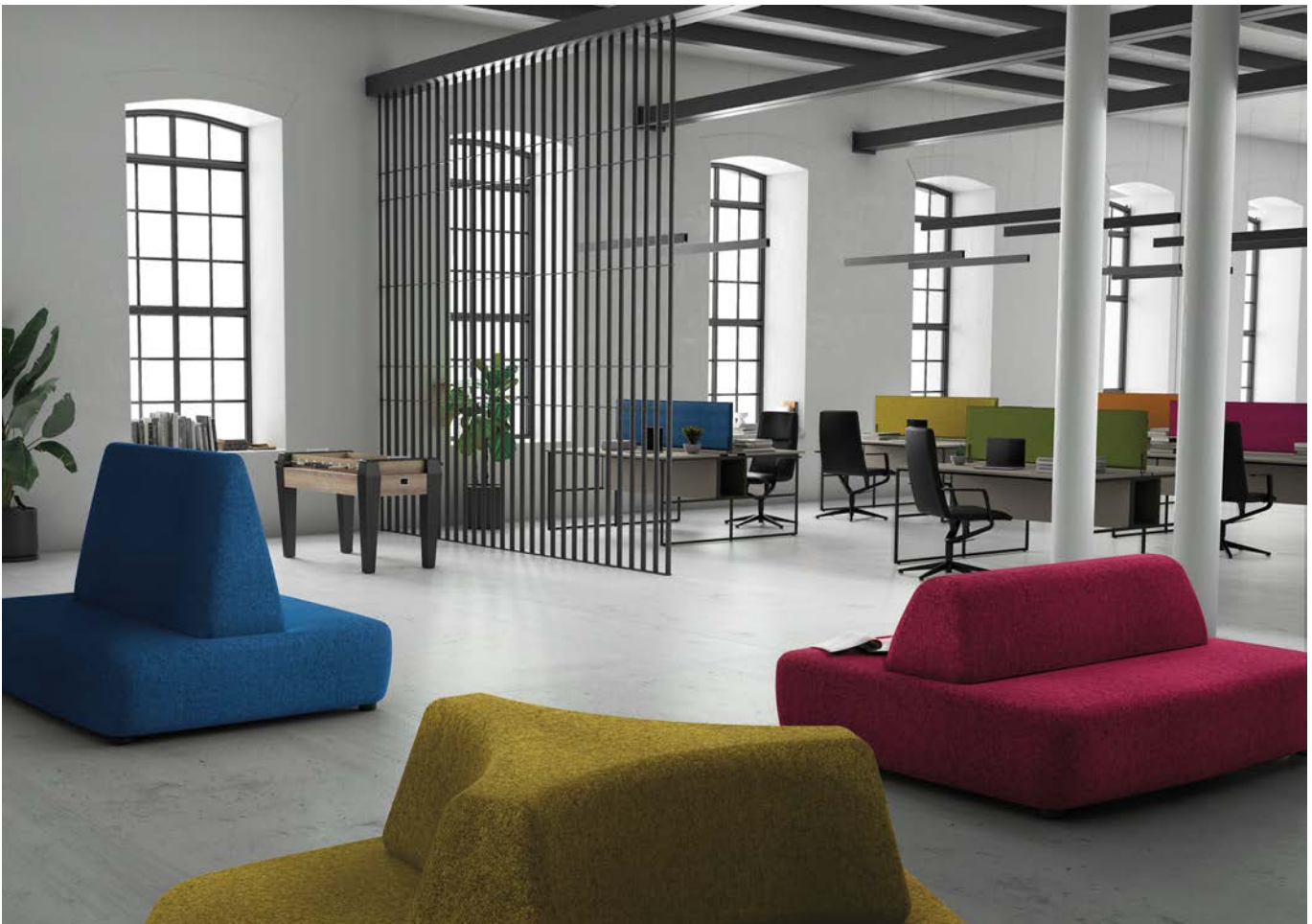


## DESIGNER

Paola Navone - Otto Studio

"Hexagonal and linear modules with an informal image compose a modular system of acoustic upholstered seating, potentially never ending. Whether in its single version for small rooms or as multiple pieces for large common areas, from the small lounge to large environments, the system combines acoustic well-being and the pleasure of a comfortable seat."

(Paola Navone)



## NAPWORK

### NAPWORK

A modular system of upholstered sound-absorbing seats with a supporting structure made of wood and elastic straps sized to independently absorb low frequencies. The seats are covered with sound-absorbing polyurethane and polyester, combined with upholstery in sound-absorbing Snowsound Fiber fabric made of polyester fibers. This combination allows the seat to effectively absorb different frequencies in the best possible way. The outer upholstery cover is removable.





NAPWORK





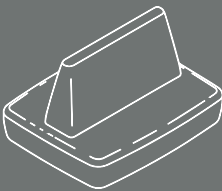




# NAPWORK



ACOUSTIC PERFORMANCE



PERFORMANCE  
~66 sq.ft.  
OF 100% SOUND  
ABSORBING  
MATERIAL AT 1000 HZ

**NAPWORK**  
ACOUSTIC SOFA  
PATENTED

The diagram illustrates the acoustic performance of the sofa. It shows a line drawing of the sofa with sound waves emanating from it. An equals sign follows, leading to a box containing the performance metrics. The text 'ACOUSTIC PERFORMANCE' is written in an arc at the top of the circle. The word 'PATENTED' is written in orange at the bottom.



## A+E TECHNOLOGY | ELECTROMAGNETIC REDUCTION (Optional)

Metallized high-tech polymer fabric with pure silver for radio frequency reduction. Specifically designed to reduce the power of electromagnetic fields. However, it doesn't completely obstruct signals, allowing the use of smartphones and Wi-Fi networks. This radio frequency reducing fabric can be included inside sofas and other sound absorbing elements, combining sound absorption with reduction of electromagnetic fields. A new patented technology for the well-being of people.

Standard Standard	Frequenza MHz (Start-Stop) Frequency	Residual signal power
GSM / 850	825-895	0.85%
GSM / 900	870-960	3.34%
UMTS	1920-2170	0.56%
LTE	2510-2690	0.30%
WIFI	2400-2500	0.60%
5G	3400-3800	0.79%
WIFI	5100-5800	0.75%



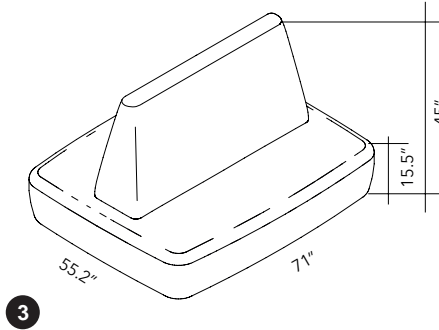
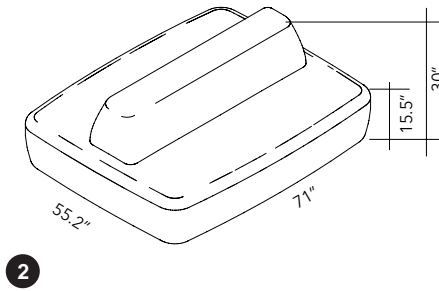
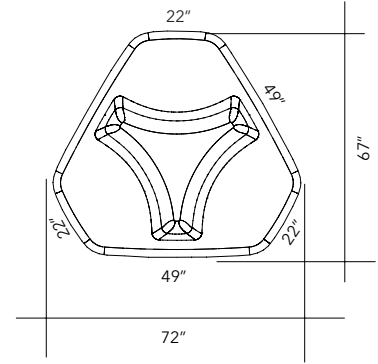
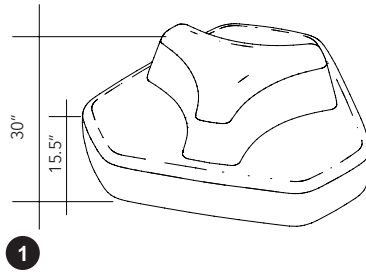


# NAPWORK

## PRODUCT SPECS

### NAPWORK

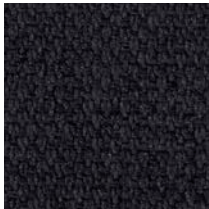
- 1 MODEL: 7DNO1
- 2 MODEL: 7DNO2
- 3 MODEL: 7DNO3



## FIBER COLORS



Fiber 3 Melange - 300  
Gray Ice



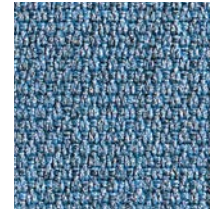
Fiber 3 Melange - 302  
Anthracite



Fiber 3 Melange - 303  
Gray Taupe



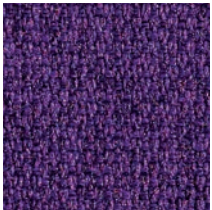
Fiber 3 Melange - 304  
Gray Beige



Fiber 3 Melange - 305  
Azure



Fiber 3 Melange - 306  
Gray Burgundy



Fiber 3 Melange - 307  
Gray Plum



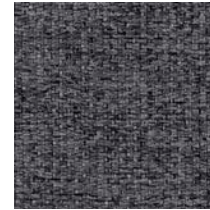
Fiber 3 Melange - 308  
Gray Blue



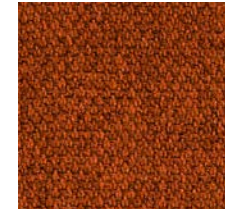
Fiber 3 Melange - 309  
Gray Green



Fiber 3 Melange - 310  
Gray Gold



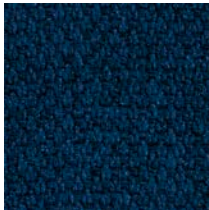
Fiber 3 Melange - 311  
Carbon Gray



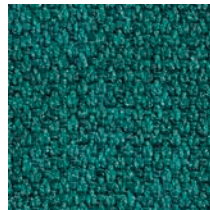
Fiber 3 Melange - 312  
Patina



Fiber 3 Melange - 313  
Evergreen



Fiber 3 Melange - 314  
Admiral Blue



Fiber 3 Melange - 315  
Fiji

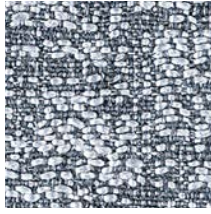


# NAPWORK

## FIBER COLORS



Fiber 8 Bouclé - 800  
Dove Coffee



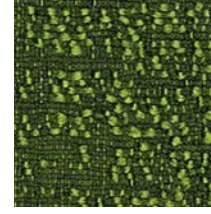
Fiber 8 Bouclé - 801  
Gray Ice



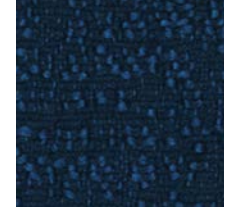
Fiber 8 Bouclé - 802  
Gray Beige



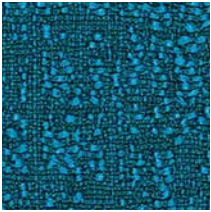
Fiber 8 Bouclé - 803  
Graphite



Fiber 8 Bouclé - 804  
Clover



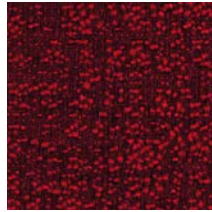
Fiber 8 Bouclé - 805  
Oxford



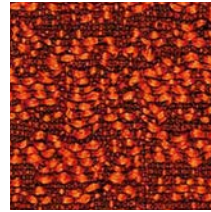
Fiber 8 Bouclé - 806  
Syreni Blue



Fiber 8 Bouclé - 807  
Obsidian



Fiber 8 Bouclé - 808  
Garnet



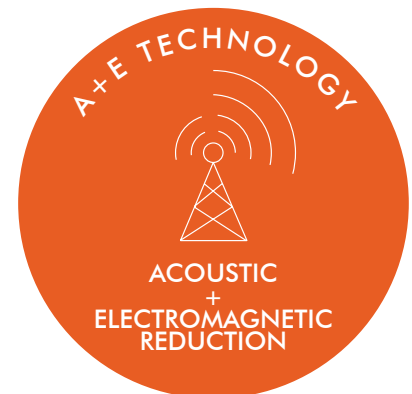
Fiber 8 Bouclé - 809  
Sandstone

<p><b>PHYSICAL PROPERTIES FIBER 3 MELANGE</b></p> <p><b>Content:</b> 100% Inherently Fire Resistant, Acoustic Sound Absorbing Polyester Fibers with Patented Snowsound Technology</p>	<p><b>PHYSICAL PROPERTIES OF FIBER 8 BOUCLÉ</b></p> <p><b>Content:</b> 100% Inherently Fire Resistant, Acoustic Sound Absorbing Polyester Fibers with Patented Snowsound Technology</p>
<p><b>ACOUSTIC PERFORMANCE AND NOISE REDUCTION RATING</b></p> <p><b>Absorption Coefficient and NRC:</b> See testing data document</p>	<p><b>ACOUSTIC PERFORMANCE AND NOISE REDUCTION RATING</b></p> <p><b>Absorption Coefficient and NRC:</b> See testing data document</p>
<p><b>PERFORMANCE</b></p> <p><b>Flame Resistance:</b> Passes NFPA 701 // NFPA 260 // CAL. TB 117 // UL 723 Class A // ASTM E 84 Class A</p> <p><b>Environment:</b> 100% Recyclable and GREENGUARD GOLD Certified, LEED v4 Credits and Certification, Declare Label, LBC Red List Free</p> <p><b>Colorfastness to Light:</b> Grade 7 - "Outstanding" (Passes AATCC 16 / ISO 105-B02:2014)</p> <p><b>Propensity to Surface Fuzzing and Pilling:</b> Grade 5 - "no change" (Passes ISO 12945-2:2002)</p>	<p><b>PERFORMANCE</b></p> <p><b>Flame Resistance:</b> Passes NFPA 701 // NFPA 260 // CAL. TB 117 // UL 723 Class A // ASTM E 84 Class A</p> <p><b>Environment:</b> 100% Recyclable and GREENGUARD GOLD Certified, LEED v4 Credits and Certification, Declare Label, LBC Red List Free</p> <p><b>Colorfastness to Light:</b> Grade 6/7 - "Excellent" (Passes AATCC 16 / ISO 105-B02:2014)</p> <p><b>Propensity to Surface Fuzzing and Pilling:</b> Grade 5 - "no change" (Passes ISO 12945-2:2002)</p>

## A+E TECHNOLOGY, ELECTROMAGNETIC REDUCTION (OPTIONAL)

The sofa is arranged to accommodate a layer of RF-reducing fabric inside if requested.

Inner cover consisting of a layer of radio frequency reducing fabric made of technopolymer metalized with pure silver capable of reducing radio frequencies without completely obstructing signals so that smartphones and Wi-Fi networks can continue to be used. The radio-frequency reducing fabric is inserted into the seats between the frame and the upholstery, making it possible to combine the functions of acoustic reverberation reduction and radio-frequency reduction. A new patented technology designed for people's well-being.





# SNOWSOUND®

Acoustics & Well-Being Technologies

## U.S.A / Canada / Mexico

Snowsound USA  
10018 Santa Fe Springs Road  
Santa Fe Springs, CA 90670  
Tel. 562.903.9550  
info@snowsoundusa.com  
www.snowsoundusa.com

## Los Angeles Showroom

Pacific Design Center, Green Building  
8687 Melrose Avenue  
1st Floor, Suite G-152  
West Hollywood, CA 90069

## Chicago Showroom

222 Merchandise Mart Plaza  
Floor 11, Suite 1197  
Chicago, IL 60654 USA

## New York Showroom

New York Design Center (NYDC)  
200 Lexington Ave  
Floor 11, Suite 1106  
New York, NY 10016 USA



# Declare.

SCAN FOR MORE PRODUCTS



HEAR THE DIFFERENCE



www.snowsoundusa.com

©2024 Snowsound USA. All rights reserved.

Follow us: @snowsoundusa

