



**SNOWSOUND**<sup>®</sup>  
Acoustics & Well-Being Technologies

**FULCRO**  
SOUND ABSORBING COFFEE TABLE

**DESIGNER**

Claudio Bellini

Coffee tables available in a variety of sizes and finishes. The base features Snowsound sound-absorbing technologies.





## FULCRO ACOUSTIC COFFEE TABLES

Coffee tables are crafted with a steel and wooden supporting structure, covered with sound-absorbing polyurethane and polyester. This combination, along with the Snowsound Fiber sound-absorbing fabric covering made of polyester fibers, enables the elements to effectively absorb various frequencies.

The internal supporting structure consists of a robust steel base painted with epoxy powders. It is equipped with three holes for three screws to secure the central column, which is made of tubular steel also painted with epoxy powders. The circular under-top plate, made of epoxy powder-coated steel, is fixed to this column using M8 screws. The table tops are attached to the plate with 6 galvanized M6 screws.

Each element is furnished with 4 technopolymer feet. The table tops are available in 12 mm thick "HPL" laminate, featuring a white exterior and a black interior with a tapered perimeter edge. Alternatively, they can be crafted from MDF wood and covered with oak wood essence or colored cement resin. The tops are protected with a transparent water-based resin. The handcrafted nature of the workmanship ensures that each piece is unique and exclusive.



PRODUCT SPECS

FULCRO

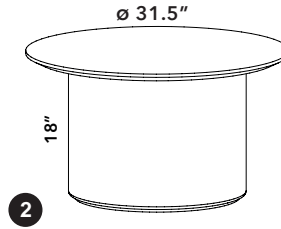
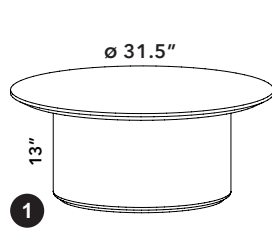
1 MODEL: 7TB33

2 MODEL: 7TB45

1 FINISH: 7TB33B/7TB45B

2 FINISH: 7TB33C/7TB45C

3 FINISH: 7TB33R/7TB45R



White/Black Edge HPL



Cement Colored Resin



Light Oak Veneer

FIBER COLORS



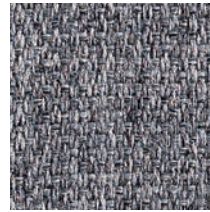
Fiber 3 Melange - 300  
Gray Ice



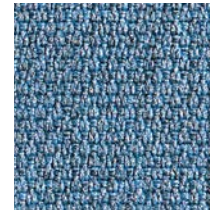
Fiber 3 Melange - 302  
Anthracite



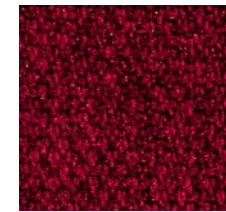
Fiber 3 Melange - 303  
Gray Taupe



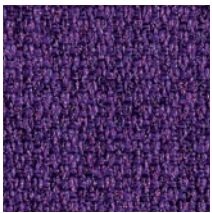
Fiber 3 Melange - 304  
Gray Beige



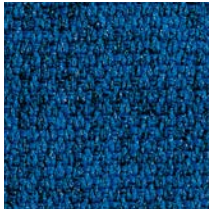
Fiber 3 Melange - 305  
Azure



Fiber 3 Melange - 306  
Gray Burgundy



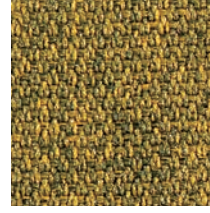
Fiber 3 Melange - 307  
Gray Plum



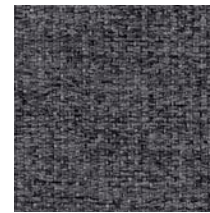
Fiber 3 Melange - 308  
Gray Blue



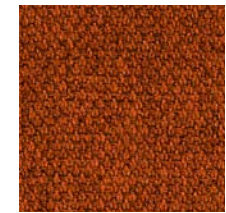
Fiber 3 Melange - 309  
Gray Green



Fiber 3 Melange - 310  
Gray Gold



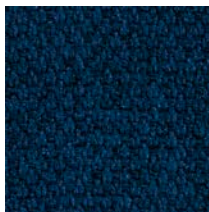
Fiber 3 Melange - 311  
Carbon Gray



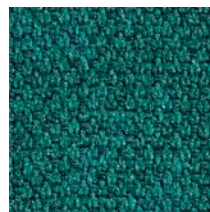
Fiber 3 Melange - 312  
Patina



Fiber 3 Melange - 313  
Evergreen



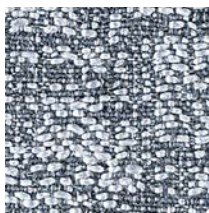
Fiber 3 Melange - 314  
Admiral Blue



Fiber 3 Melange - 315  
Fiji



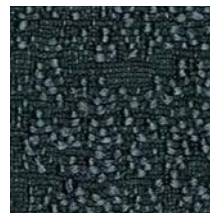
Fiber 8 Bouclé - 800  
Dove Coffee



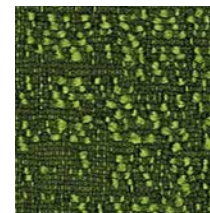
Fiber 8 Bouclé - 801  
Gray Ice



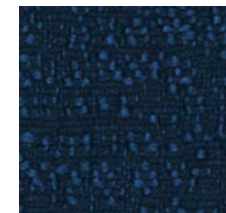
Fiber 8 Bouclé - 802  
Gray Beige



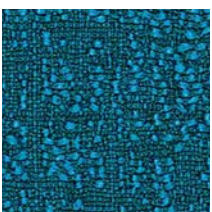
Fiber 8 Bouclé - 803  
Graphite



Fiber 8 Bouclé - 804  
Clover



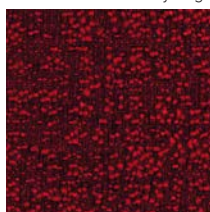
Fiber 8 Bouclé - 805  
Oxford



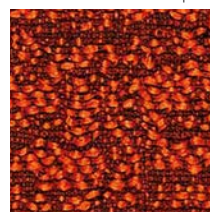
Fiber 8 Bouclé - 806  
Syreni Blue



Fiber 8 Bouclé - 807  
Obsedian



Fiber 8 Bouclé - 808  
Garnet



Fiber 8 Bouclé - 809  
Sandstone

# FULCRO

<p><b>PHYSICAL PROPERTIES FIBER 3 MELANGE</b></p> <p><b>Content:</b> 100% Inherently Fire Resistant, Acoustic Sound Absorbing Polyester Fibers with Patented Snowsound Technology</p>	<p><b>PHYSICAL PROPERTIES OF FIBER 8 BOUCLÈ</b></p> <p><b>Content:</b> 100% Inherently Fire Resistant, Acoustic Sound Absorbing Polyester Fibers with Patented Snowsound Technology</p>
<p><b>ACOUSTIC PERFORMANCE AND NOISE REDUCTION RATING</b></p> <p><b>Absorption Coefficient and NRC:</b> See testing data document</p>	<p><b>ACOUSTIC PERFORMANCE AND NOISE REDUCTION RATING</b></p> <p><b>Absorption Coefficient and NRC:</b> See testing data document</p>
<p><b>PERFORMANCE</b></p> <p><b>Flame Resistance:</b> Passes NFPA 701 // NFPA 260 // CAL. TB 117 // UL 723 Class A // ASTM E 84 Class A</p> <p><b>Environment:</b> 100% Recyclable and GREENGUARD GOLD Certified LEED v4 Credits and Certification, Declare Label, LBC Red List Free</p> <p><b>Colorfastness to Light:</b> Grade 7 - "Outstanding" (Passes AATCC 16 / ISO 105-B02:2014)</p> <p><b>Propensity to Surface Fuzzing and Pilling:</b> Grade 5 - "no change" (Passes ISO 12945-2:2002)</p>	<p><b>PERFORMANCE</b></p> <p><b>Flame Resistance:</b> Passes NFPA 701 // NFPA 260 // CAL. TB 117 // UL 723 Class A // ASTM E 84 Class A</p> <p><b>Environment:</b> 100% Recyclable and GREENGUARD GOLD Certified, LEED v4 Credits and Certification, Declare Label, LBC Red List Free</p> <p><b>Colorfastness to Light:</b> Grade 6/7 - "Excellent" (Passes AATCC 16 / ISO 105-B02:2014)</p> <p><b>Propensity to Surface Fuzzing and Pilling:</b> Grade 5 - "no change" (Passes ISO 12945-2:2002)</p>

# SNOWSOUND®

Acoustics & Well-Being Technologies

## U.S.A / Canada / Mexico

Snowsound USA  
10018 Santa Fe Springs Road  
Santa Fe Springs, CA 90670  
Tel. 562.903.9550  
info@snowsoundusa.com  
www.snowsoundusa.com

## Los Angeles Showroom

Pacific Design Center, Green Building  
8687 Melrose Avenue  
1st Floor, Suite G-152  
West Hollywood, CA 90069

## Chicago Showroom

222 Merchandise Mart Plaza  
Floor 11, Suite 1197  
Chicago, IL 60654 USA

## New York Showroom

New York Design Center (NYDC)  
200 Lexington Ave  
Floor 11, Suite 1106  
New York, NY 10016 USA



# Declare.

SCAN FOR MORE PRODUCTS



HEAR THE DIFFERENCE



www.snowsoundusa.com

©2024 Snowsound USA. All rights reserved.

Follow us: @snowsoundusa

