



**SNOWSOUND**<sup>®</sup>  
Acoustics & Well-Being Technologies

**CILINDRO**  
ACOUSTIC SOFA

## CILINDRO

### DESIGNER

Claudio Bellini

"A geometric structure, synthesis of an interlocking of volumes and essential shapes. Analytical intersections of points, lines and surfaces, inscribed in an acoustic seat of modernist inspiration."

(Claudio Bellini)



## CILINDRO



### CILINDRO

Sound-absorbing upholstered seats feature a supporting structure made of wood and elastic straps designed to absorb low frequencies independently. The seats are covered with sound-absorbing polyurethane and polyester, combined with upholstery in sound-absorbing Snowsound Fiber fabric made of polyester fibers. This combination allows the seat to effectively absorb various frequencies.

The backrest structure is attached to the rest of the frame by means of two robust steel bars. In the case of the 64" long sofa, the backrest structure is further strengthened by a steel profile with a 'C' section.



CILINDRO

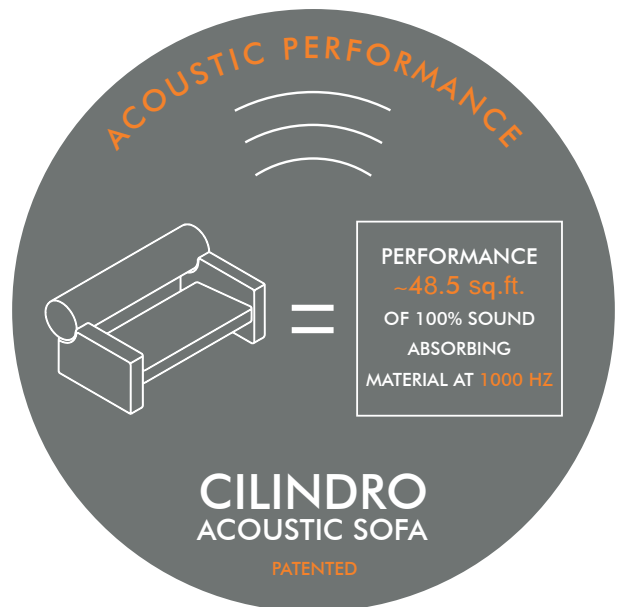


CILINDRO

**SPAZIO**  
**SPACE**



# CILINDRO



CILINDRO



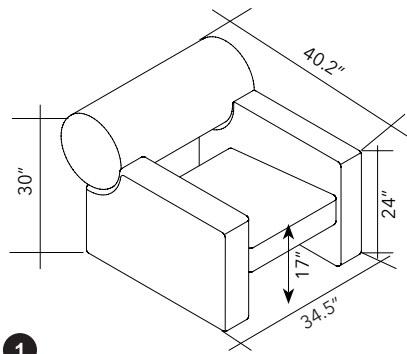
# CILINDRO

## PRODUCT SPECS

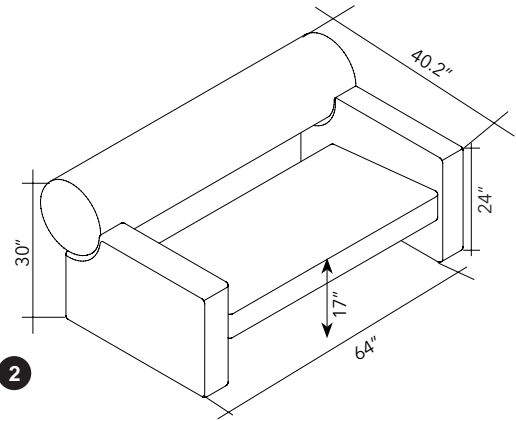
### CILINDRO

1 MODEL: 7DB1

2 MODEL: 7DB2

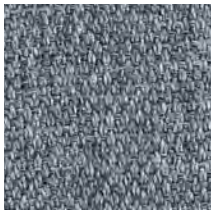


1

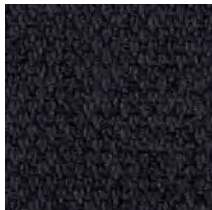


2

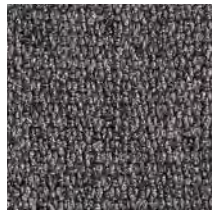
## FIBER COLORS



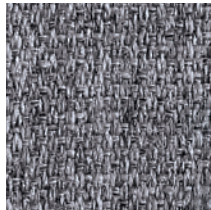
Fiber 3 Melange - 300  
Gray Ice



Fiber 3 Melange - 302  
Anthracite



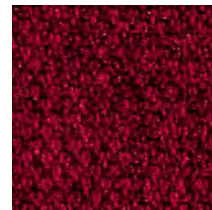
Fiber 3 Melange - 303  
Gray Taupe



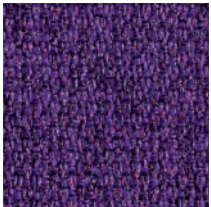
Fiber 3 Melange - 304  
Gray Beige



Fiber 3 Melange - 305  
Azure



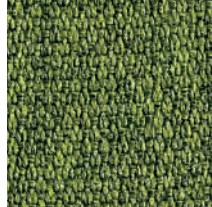
Fiber 3 Melange - 306  
Gray Burgundy



Fiber 3 Melange - 307  
Gray Plum



Fiber 3 Melange - 308  
Gray Blue



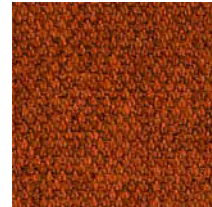
Fiber 3 Melange - 309  
Gray Green



Fiber 3 Melange - 310  
Gray Gold



Fiber 3 Melange - 311  
Carbon Gray



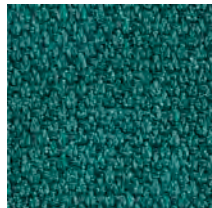
Fiber 3 Melange - 312  
Patina



Fiber 3 Melange - 313  
Evergreen



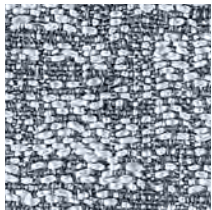
Fiber 3 Melange - 314  
Admiral Blue



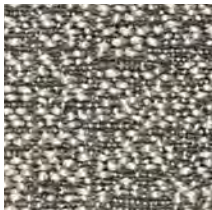
Fiber 3 Melange - 315  
Fiji



Fiber 8 Bouclé - 800  
Dove Coffee



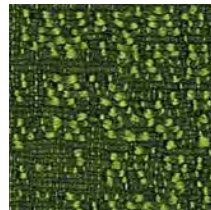
Fiber 8 Bouclé - 801  
Gray Ice



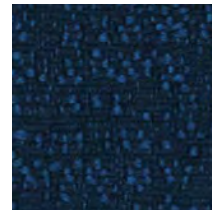
Fiber 8 Bouclé - 802  
Gray Beige



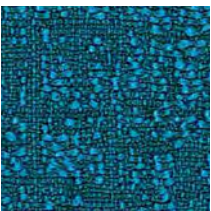
Fiber 8 Bouclé - 803  
Graphite



Fiber 8 Bouclé - 804  
Clover



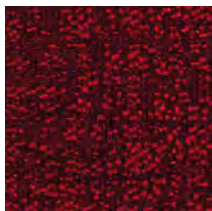
Fiber 8 Bouclé - 805  
Oxford



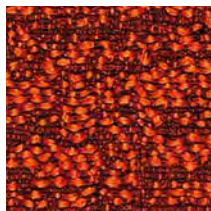
Fiber 8 Bouclé - 806  
Syreni Blue



Fiber 8 Bouclé - 807  
Obsidian



Fiber 8 Bouclé - 808  
Garnet



Fiber 8 Bouclé - 809  
Sandstone



# CILINDRO

<p><b>PHYSICAL PROPERTIES FIBER 3 MELANGE</b></p> <p><b>Content:</b> 100% Inherently Fire Resistant, Acoustic Sound Absorbing Polyester Fibers with Patented Snowsound Technology</p>	<p><b>PHYSICAL PROPERTIES OF FIBER 8 BOUCLÈ</b></p> <p><b>Content:</b> 100% Inherently Fire Resistant, Acoustic Sound Absorbing Polyester Fibers with Patented Snowsound Technology</p>
<p><b>ACOUSTIC PERFORMANCE AND NOISE REDUCTION RATING</b></p> <p><b>Absorption Coefficient and NRC:</b> See testing data document</p>	<p><b>ACOUSTIC PERFORMANCE AND NOISE REDUCTION RATING</b></p> <p><b>Absorption Coefficient and NRC:</b> See testing data document</p>
<p><b>PERFORMANCE</b></p> <p><b>Flame Resistance:</b> Passes NFPA 701 // NFPA 260 // CAL. TB 117 // UL 723 Class A // ASTM E 84 Class A</p> <p><b>Environment:</b> 100% Recyclable and GREENGUARD GOLD Certified, LEED v4 Credits and Certification, Declare Label, LBC Red List Free</p> <p><b>Colorfastness to Light:</b> Grade 7 - "Outstanding" (Passes AATCC 16 / ISO 105-B02:2014)</p> <p><b>Propensity to Surface Fuzzing and Pilling:</b> Grade 5 - "no change" (Passes ISO 12945-2:2002)</p>	<p><b>PERFORMANCE</b></p> <p><b>Flame Resistance:</b> Passes NFPA 701 // NFPA 260 // CAL. TB 117 // UL 723 Class A // ASTM E 84 Class A</p> <p><b>Environment:</b> 100% Recyclable and GREENGUARD GOLD Certified, LEED v4 Credits and Certification, Declare Label, LBC Red List Free</p> <p><b>Colorfastness to Light:</b> Grade 6/7 - "Excellent" (Passes AATCC 16 / ISO 105-B02:2014)</p> <p><b>Propensity to Surface Fuzzing and Pilling:</b> Grade 5 - "no change" (Passes ISO 12945-2:2002)</p>

# SNOWSOUND®

Acoustics & Well-Being Technologies

## U.S.A / Canada / Mexico

Snowsound USA  
10018 Santa Fe Springs Road  
Santa Fe Springs, CA 90670  
Tel. 562.903.9550  
info@snowsoundusa.com  
www.snowsoundusa.com

## Los Angeles Showroom

Pacific Design Center, Green Building  
8687 Melrose Avenue  
1st Floor, Suite G-152  
West Hollywood, CA 90069

## Chicago Showroom

222 Merchandise Mart Plaza  
Floor 11, Suite 1197  
Chicago, IL 60654 USA

## New York Showroom

New York Design Center (NYDC)  
200 Lexington Ave  
Floor 11, Suite 1106  
New York, NY 10016 USA



# Declare.

SCAN FOR MORE PRODUCTS



HEAR THE DIFFERENCE



www.snowsoundusa.com

©2024 Snowsound USA. All rights reserved.

Follow us: @snowsoundusa

