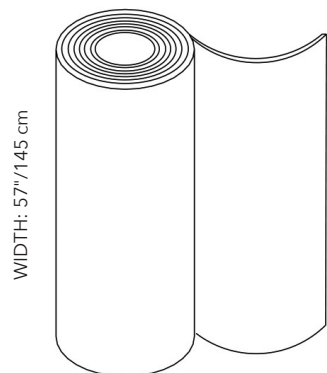


A close-up photograph of a white, textured fabric, likely a bedsheet or pillowcase, showing soft, natural folds and subtle shadows that create a sense of depth and texture. The lighting is soft and even, highlighting the fine weave of the material.

SNOWSOUND® FIBER TEXTILES





Fabric Bolt Sizes

27.3 YARDS / 25 METERS

8.7 YARDS / 8 METERS

PHYSICAL PROPERTIES

Content: 100% Fire Resistant, Acoustic Sound Absorbing Polyester Fibers with Patented Snowsound Technology

Backing: Unbacked

Width: 57" // 145 cm (tolerance + 0 - 3 cm)

Weight: 13.6 oz per square yard / 21.5 oz per linear yard

Thickness: 1.6 mm

ACOUSTIC PERFORMANCE AND NOISE REDUCTION RATING

Absorption Coefficient and NRC:

Class A Sound Absorption per ISO 11654 with NRC 1.0 achievable depending on installation. Please refer to on-line technical sheets for details

PERFORMANCE

Flame Resistance:

Passes NFPA 701 // NFPA 260 // CAL. TB 117 // UL 723 Class A // ASTM E 84 Class A

Environment:

100% Recyclable and GREENGUARD GOLD Certified

Abrasion Resistance:

25,000 rubs /cycles (tested according to Martindale Method)

Colorfastness to Light:

Grade 6/7 - "Excellent" (Passes AATCC 16 / ISO 105-B02:2014)

Colorfastness to Wet and Dry Crocking:

Wet & Dry - Grade 5 (Passes AATCC 8 / ISO 105-X12: 2016)

Propensity to Surface Fuzzing and Pilling:

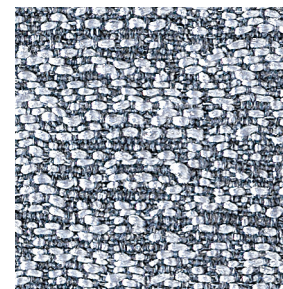
Grade 5 - "no change" (Passes ISO 12945-2:2002)

Washing and Maintenance:

Normal machine washing up to 86 degrees Fahrenheit. Ironing on low heat acceptable. Dry cleaning is acceptable (any solvent except Trichloroethylene). Do not tumble dry.



Dove Coffee (8.7 yd) 7F8-8-800
Dove Coffee (27.3 yd) 7F8-25-800



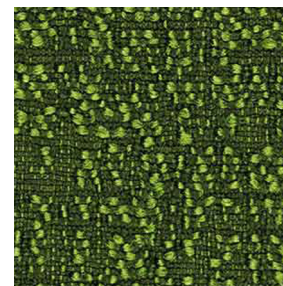
Gray Ice (8.7 yd) 7F8-8-801
Gray Ice (27.3 yd) 7F8-25-801



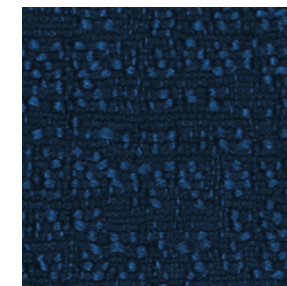
Gray Beige (8.7 yd) 7F8-8-802
Gray Beige (27.3 yd) 7F8-25-802



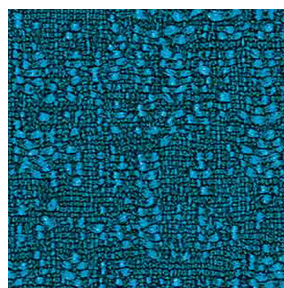
Graphite (8.7 yd) 7F8-8-803
Graphite (27.3 yd) 7F8-25-803



Clover (8.7 yd) 7F8-8-804
Clover (27.3 yd) 7F8-25-804



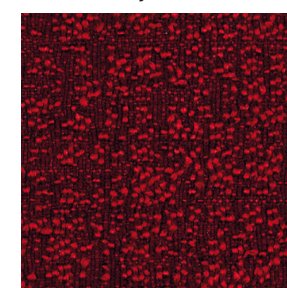
Oxford (8.7 yd) 7F8-8-805
Oxford (27.3 yd) 7F8-25-805



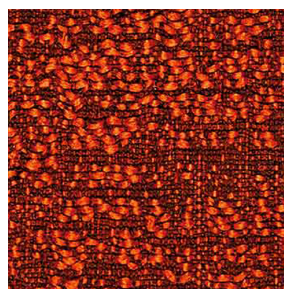
Syreni Blue (8.7 yd) 7F8-8-806
Syreni Blue (27.3 yd) 7F8-25-806



Obsedian (8.7 yd) 7F8-8-807
Obsedian (27.3 yd) 7F8-25-807



Garnet (8.7 yd) 7F8-8-808
Garnet (27.3 yd) 7F8-25-808

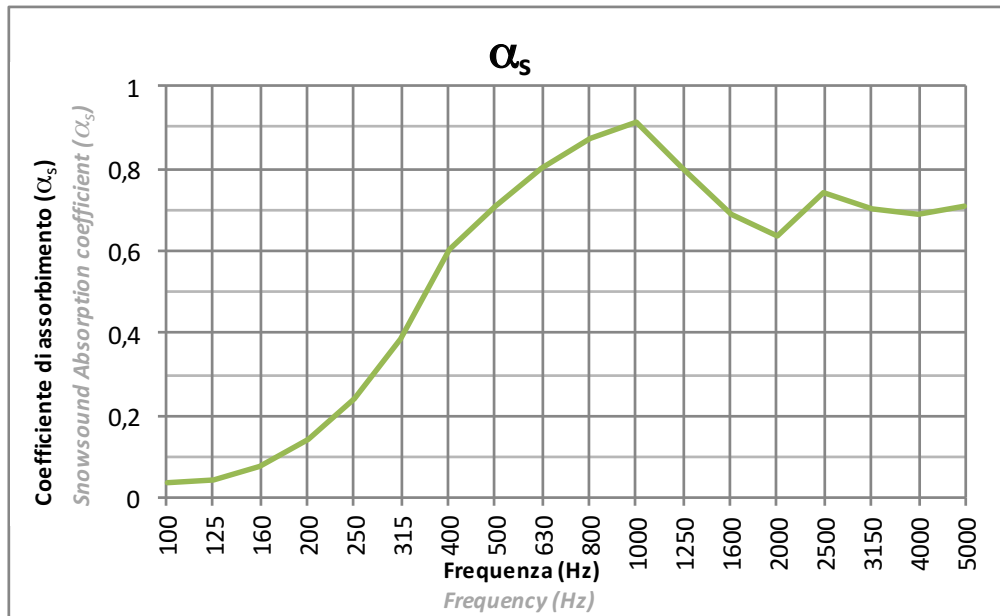
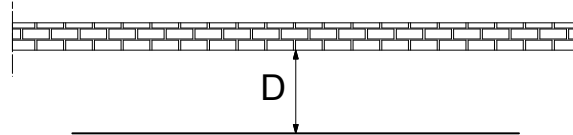


Sandstone (8.7 yd) 7F8-8-809
Sandstone (27.3 yd) 7F8-25-809

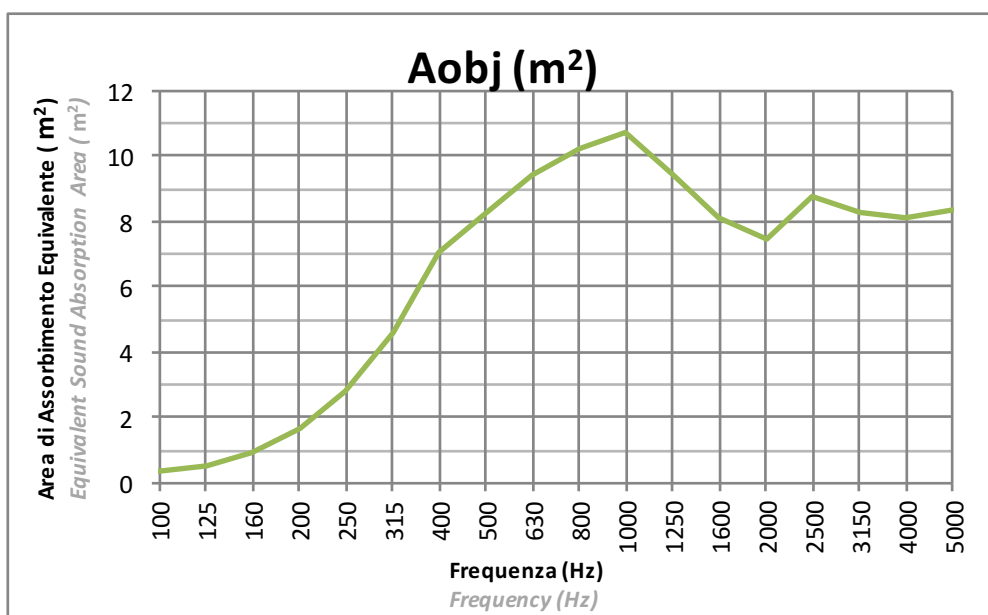
SNOWSOUND-FIBER 8

Tessuto: PLANARE
Fabric: FLAT

Installazione: Distanza da parete 10cm (D=10cm)
Installation: Distance from the wall 10cm (D=10cm)



La prova è stata eseguita secondo le prescrizioni della norma UNI EN ISO 354
Test executed according to UNI EN ISO 354



La prova è stata eseguita secondo le prescrizioni della norma UNI EN ISO 354
Test executed according to UNI EN ISO 354

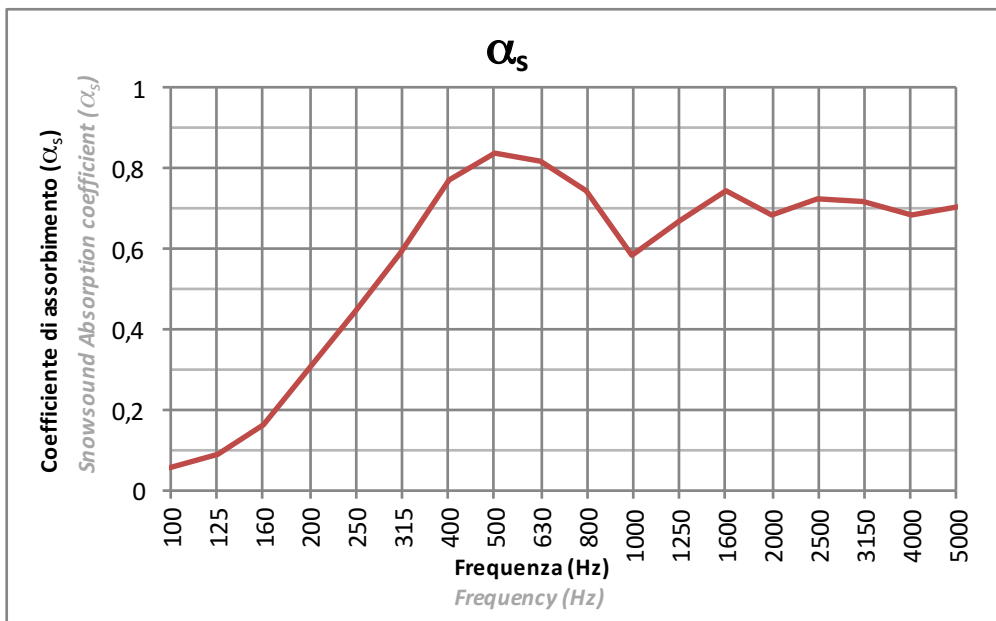
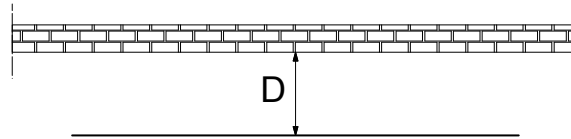
SNOWSOUND-FIBER 8

Tessuto: PLANARE

Fabric: FLAT

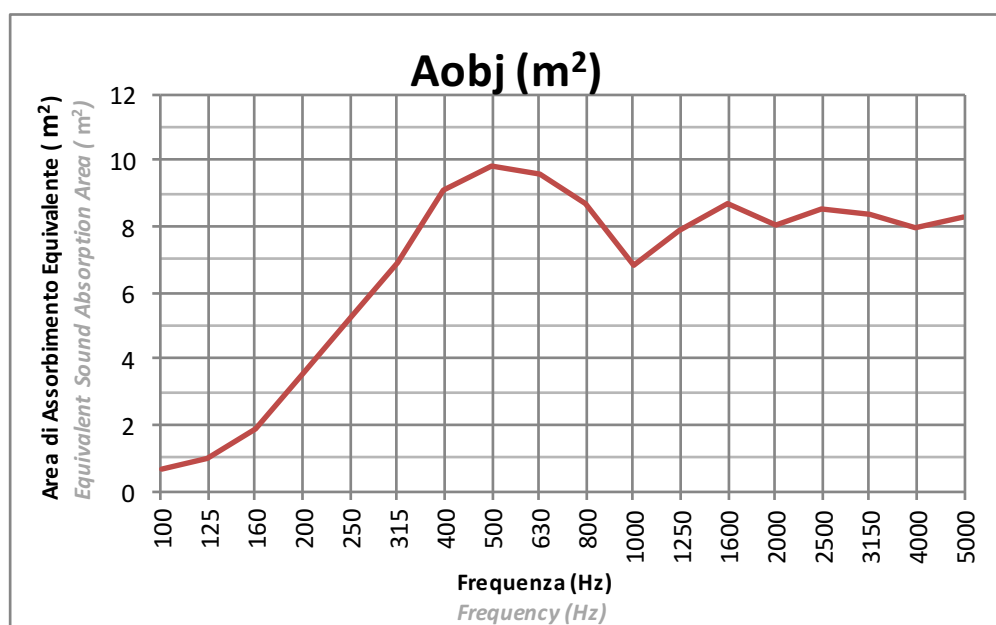
Installazione: Distanza da parete 20cm (D=20cm)

Installation: Distance from the wall 20cm (D=20cm)



La prova è stata eseguita secondo le prescrizioni della norma UNI EN ISO 354

Test executed according to UNI EN ISO 354



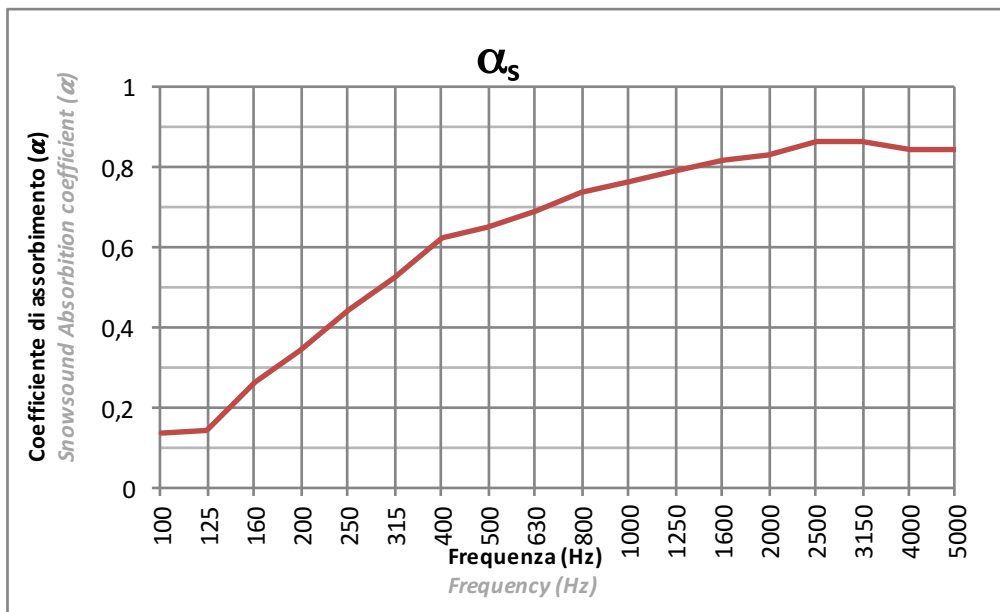
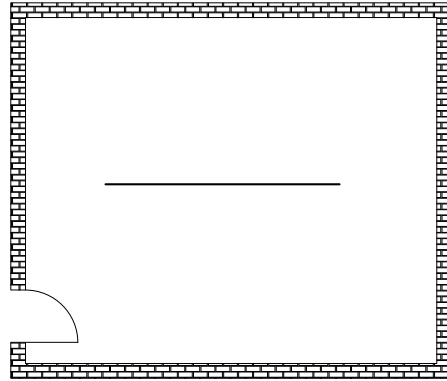
La prova è stata eseguita secondo le prescrizioni della norma UNI EN ISO 354

Test executed according to UNI EN ISO 354

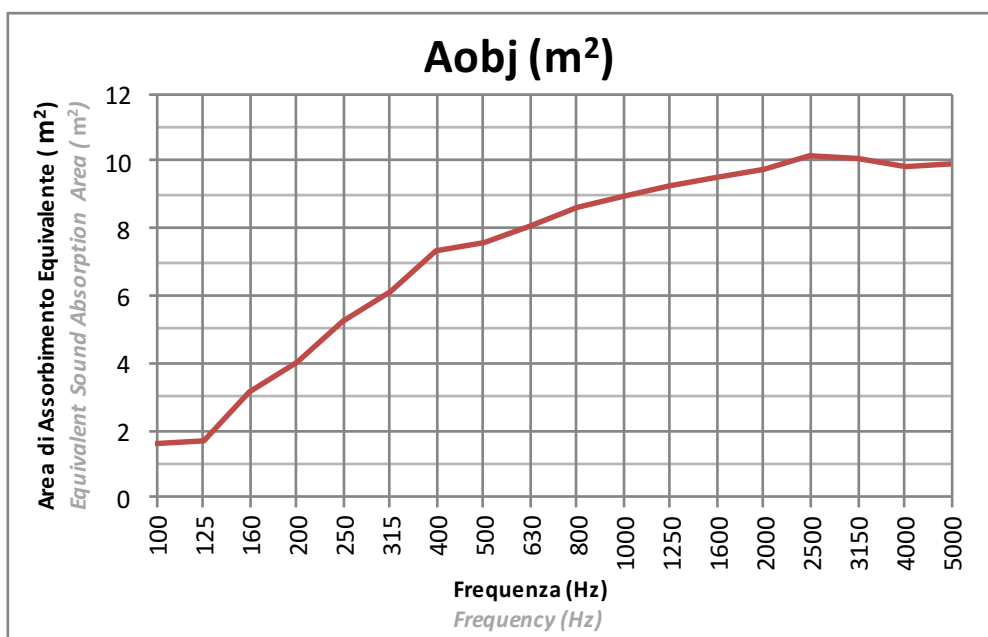
SNOWSOUND-FIBER 8

Tessuto: PLANARE
Fabric: FLAT

Installazione: CENTRO STANZA
Installation: CENTER OF THE ROOM



Procedura Sperimentale
Experimental Procedure

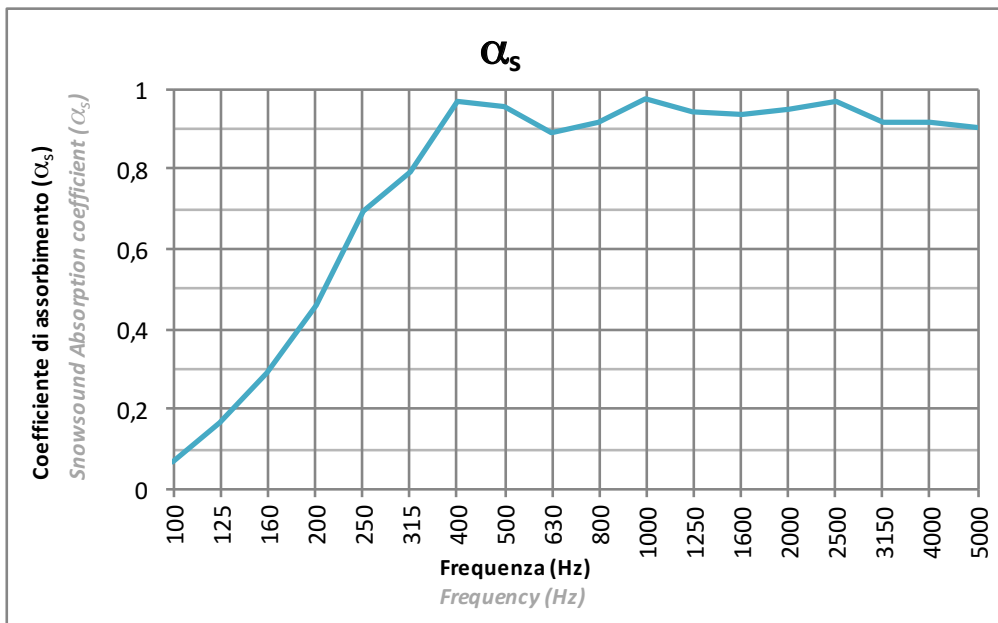
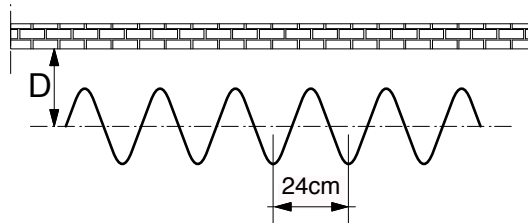


La prova è stata eseguita secondo le prescrizioni della norma UNI EN ISO 354
Test executed according to UNI EN ISO 354

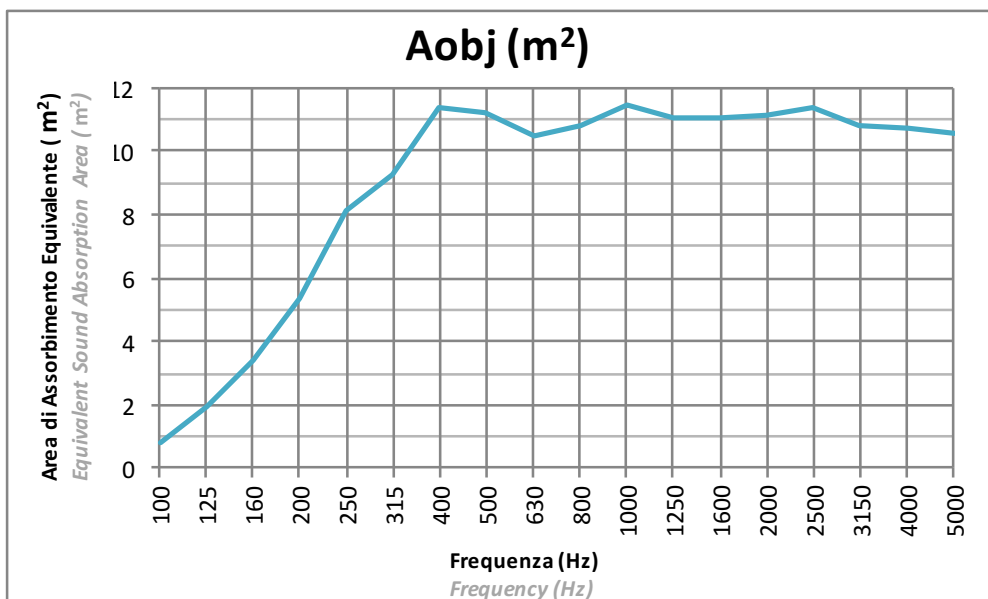
SNOWSOUND-FIBER 8

Tessuto: ONDULATO a passo 24cm
Fabric: WAVY (24cm pace)

Installazione: Distanza dall'asse da parete 20cm (D=20cm)
Installation: Wall to axis distance 20cm (D=20cm)



La prova è stata eseguita secondo le prescrizioni della norma UNI EN ISO 354
Test executed according to UNI EN ISO 354

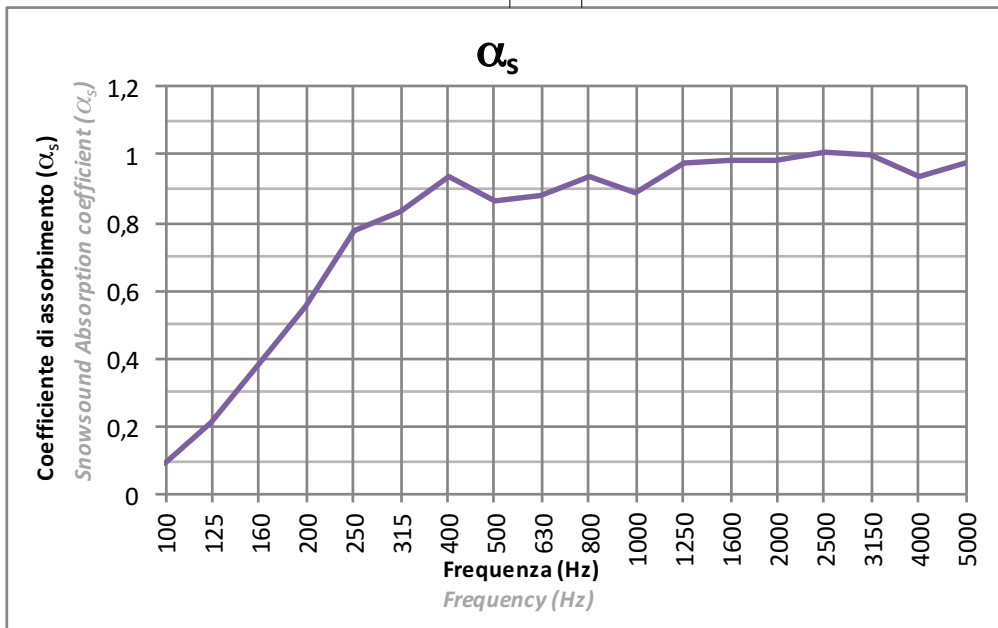
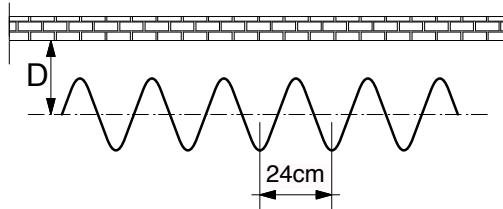


La prova è stata eseguita secondo le prescrizioni della norma UNI EN ISO 354
Test executed according to UNI EN ISO 354

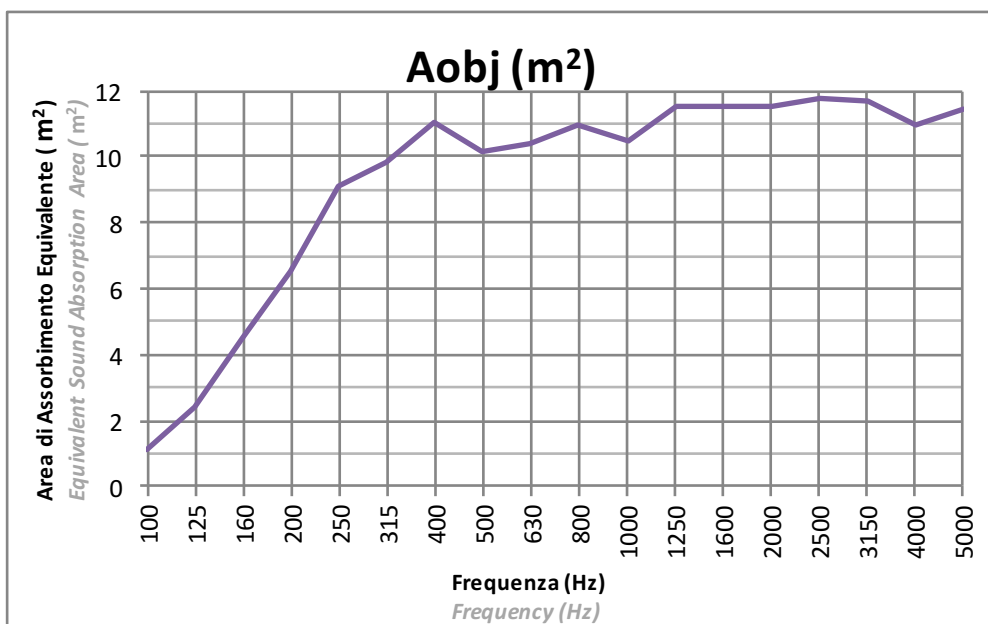
SNOWSOUND-FIBER 8

Tessuto: ONDULATO a passo 24cm
Fabric: WAVY (24cm pace)

Installazione: Distanza dall'asse da parete 30cm (D=30cm)
Installation: Wall to axis distance 30cm (D=30cm)



La prova è stata eseguita secondo le prescrizioni della norma UNI EN ISO 354
Test executed according to UNI EN ISO 354

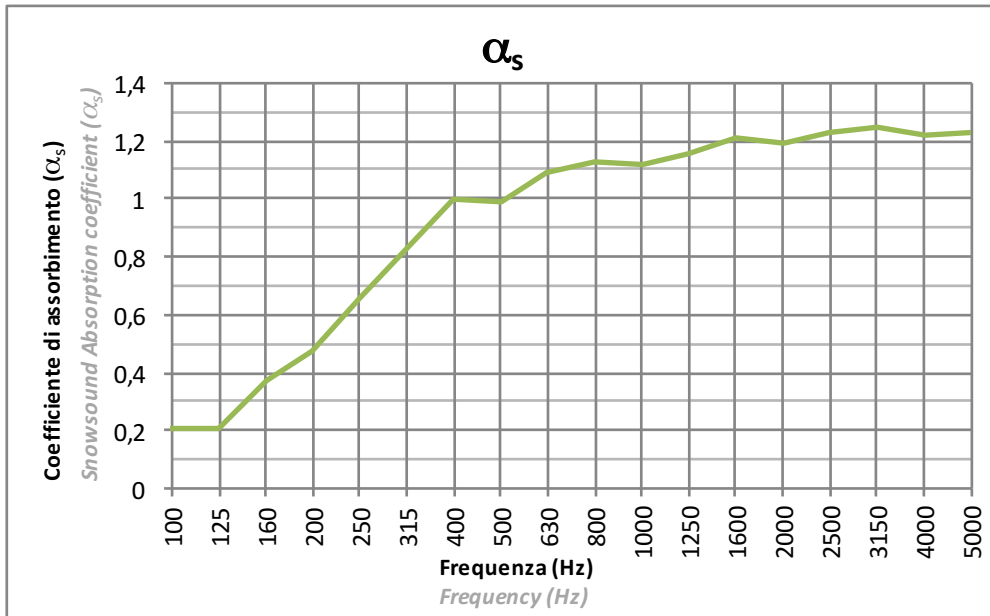
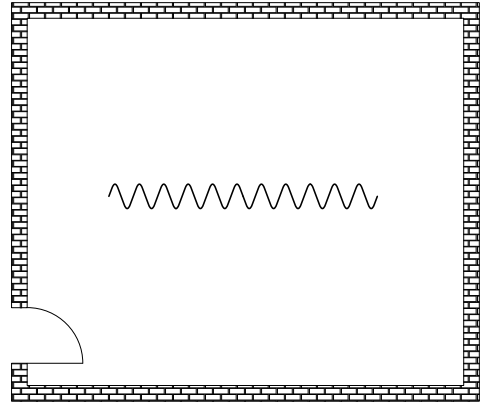
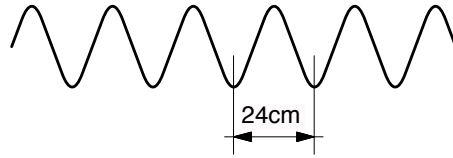


La prova è stata eseguita secondo le prescrizioni della norma UNI EN ISO 354
Test executed according to UNI EN ISO 354

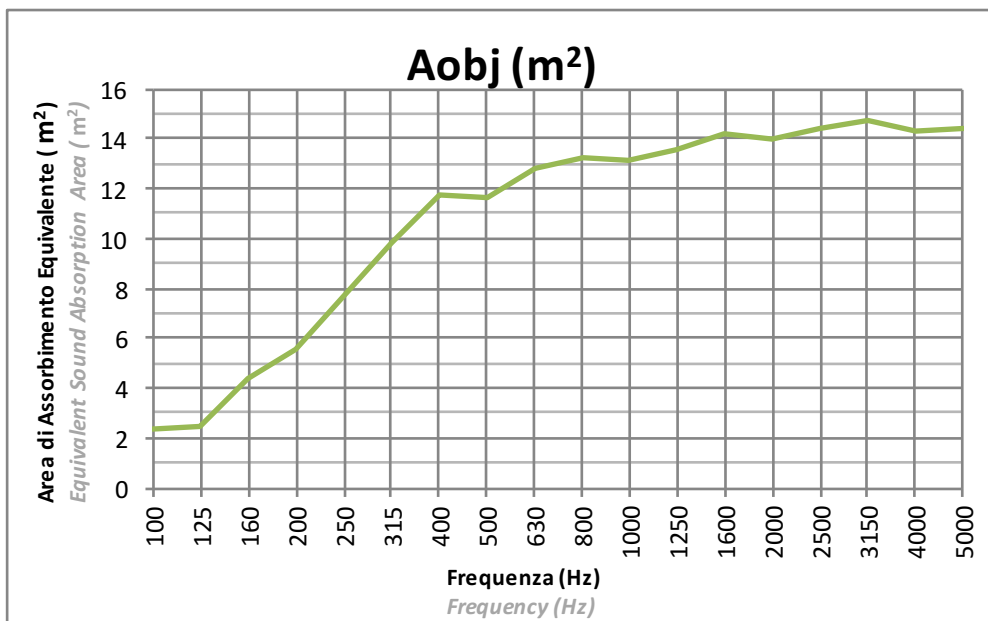
SNOWSOUND-FIBER 8

Tessuto: ONDULATO a passo 24cm
Fabric: WAVY (24cm pace)

Installazione: CENTRO STANZA
Installation: CENTER OF THE ROOM



Procedura Sperimentale
Experimental Procedure



La prova è stata eseguita secondo le prescrizioni della norma UNI EN ISO 354
Test executed according to UNI EN ISO 354