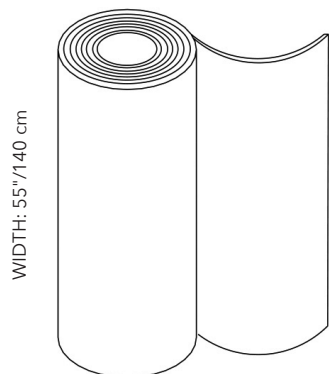




SNOWSOUND[®] FIBER TEXTILES





WIDTH: 55" / 140 cm

Fabric Bolt Sizes

27.3 YARDS / 25 METERS

8.7 YARDS / 8 METERS

PHYSICAL PROPERTIES

Content: 100% Fire Resistant, Acoustic Sound Absorbing Polyester Fibers with Patented Snowsound Technology

Backing: Unbacked

Width: 55" // 140 cm (tolerance + 0 - 3 cm)

Weight: 10.0 oz per square yard / 15.4 oz per linear yard

Thickness: 1 mm

ACOUSTIC PERFORMANCE AND NOISE REDUCTION RATING

Absorption Coefficient and NRC:

Class A Sound Absorption per ISO 11654 with NRC 1.0 achievable depending on installation. Please refer to on-line technical sheets for details

PERFORMANCE

Flame Resistance:

Passes NFPA 701 // NFPA 260 // CAL. TB 117 // UL 723 Class A // ASTM E 84 Class A

Environment:

100% Recyclable and GREENGUARD GOLD Certified

Abrasion Resistance:

50,000 rubs /cycles (tested according to Martindale Method)

Colorfastness to Light:

Grade 7 - "Outstanding" (Passes AATCC 16 / ISO 105-B02:2014)

Colorfastness to Crocking:

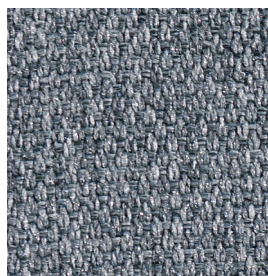
Wet - Grade 5. Dry - Grade 4/5. (Passes AATCC 8 / ISO 105-X12: 2016)

Propensity to Surface Fuzzing and Pilling:

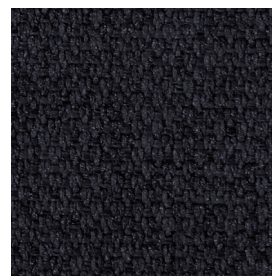
Grade 5 - "no change" (Passes ISO 12945-2:2002)

Washing and Maintenance:

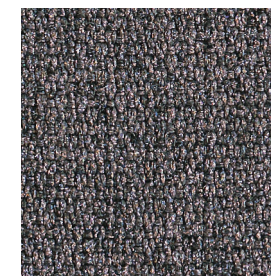
Normal machine washing up to 86 degrees Fahrenheit. Ironing on low heat acceptable. Dry cleaning is acceptable (any solvent except Trichloroethylene). Do not tumble dry.



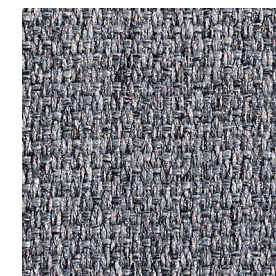
Gray Ice (8.7 yd) 7F3-8-300
Gray Ice (27.3 yd) 7F3-25-300



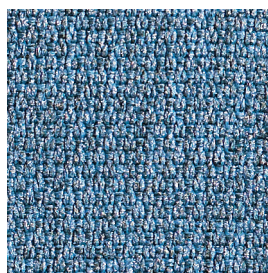
Anthracite (8.7 yd) 7F3-8-302
Anthracite (27.3 yd) 7F3-25-302



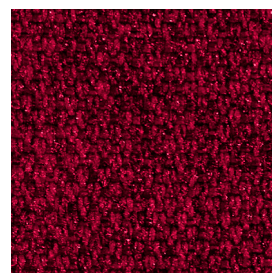
Gray Taupe (8.7 yd) 7F3-8-303
Gray Taupe (27.3 yd) 7F3-25-303



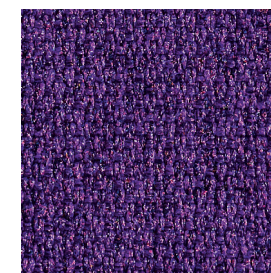
Gray Beige (8.7 yd) 7F3-8-304
Gray Beige (27.3 yd) 7F3-25-304



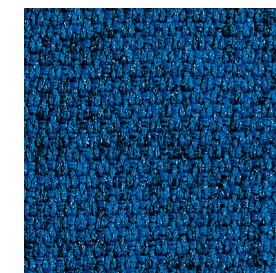
Azure (8.7 yd) 7F3-8-305
Azure (27.3 yd) 7F3-25-305



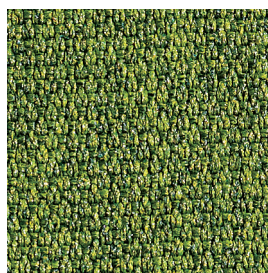
Gray Burgundy (8.7 yd) 7F3-8-306
Gray Burgundy (27.3 yd) 7F3-25-306



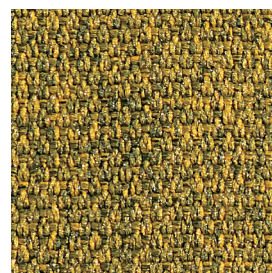
Gray Plum (8.7 yd) 7F3-8-307
Gray Plum (27.3 yd) 7F3-25-307



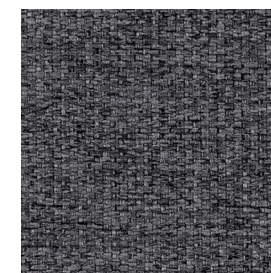
Gray Blue (8.7 yd) 7F3-8-308
Gray Blue (27.3 yd) 7F3-25-308



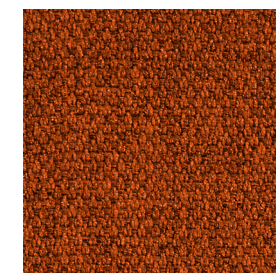
Gray Green (8.7 yd) 7F3-8-309
Gray Green (27.3 yd) 7F3-25-309



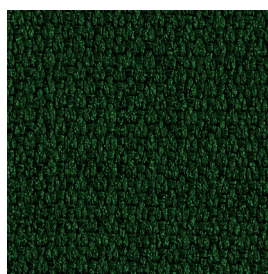
Gray Gold (8.7 yd) 7F3-8-310
Gray Gold (27.3 yd) 7F3-25-310



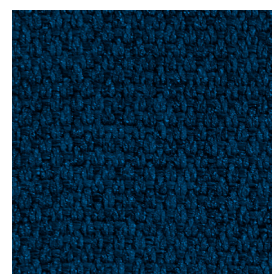
Carbon Gray (8.7 yd) 7F3-8-311
Carbon Gray (27.3 yd) 7F3-25-311



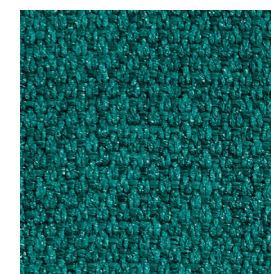
Patina (8.7 yd) 7F3-8-312
Patina (27.3 yd) 7F3-25-312



Evergreen (8.7 yd) 7F3-8-313
Evergreen (27.3 yd) 7F3-25-313



Admiral Blue (8.7 yd) 7F3-8-314
Admiral Blue (27.3 yd) 7F3-25-314

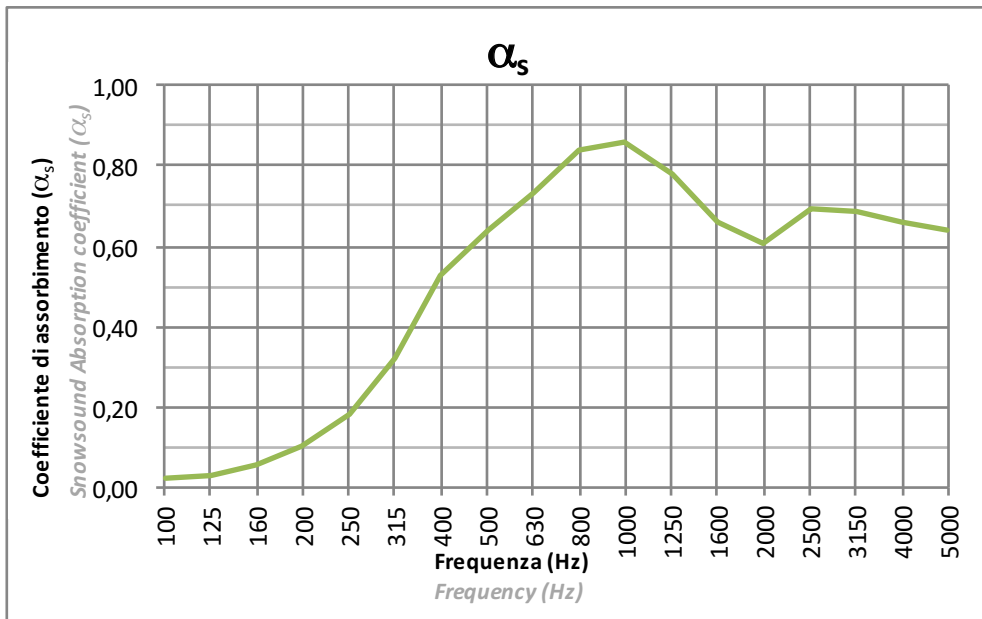
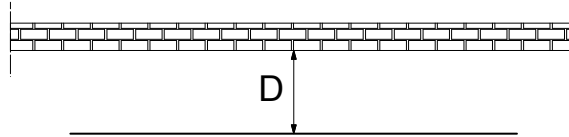


Fiji (8.7 yd) 7F3-8-315
Fiji (27.3 yd) 7F3-25-315

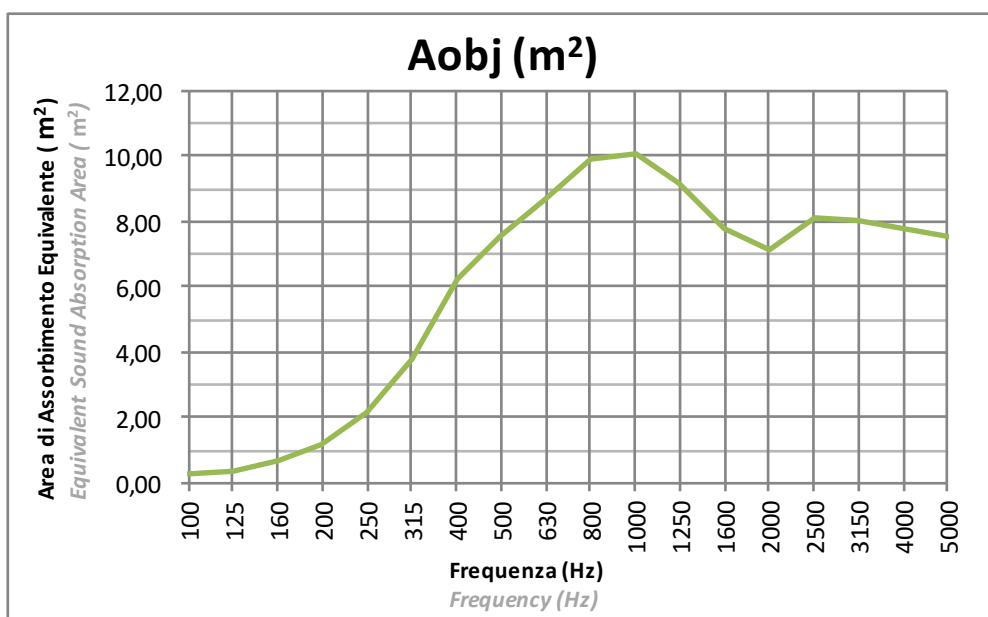
SNOWSOUND-FIBER 3

Tessuto: PLANARE
Fabric: FLAT

Installazione: Distanza da parete 10cm (D=10cm)
Installation: Distance from the wall 10cm (D=10cm)



La prova è stata eseguita secondo le prescrizioni della norma UNI EN ISO 354
Test executed according to UNI EN ISO 354

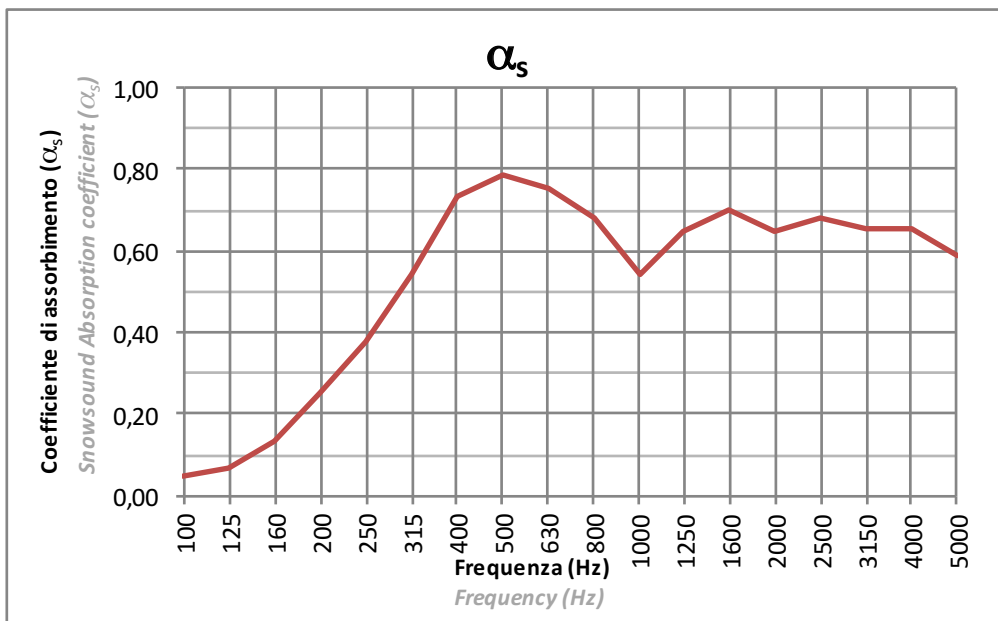
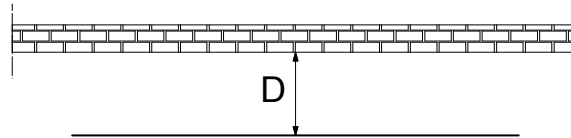


La prova è stata eseguita secondo le prescrizioni della norma UNI EN ISO 354
Test executed according to UNI EN ISO 354

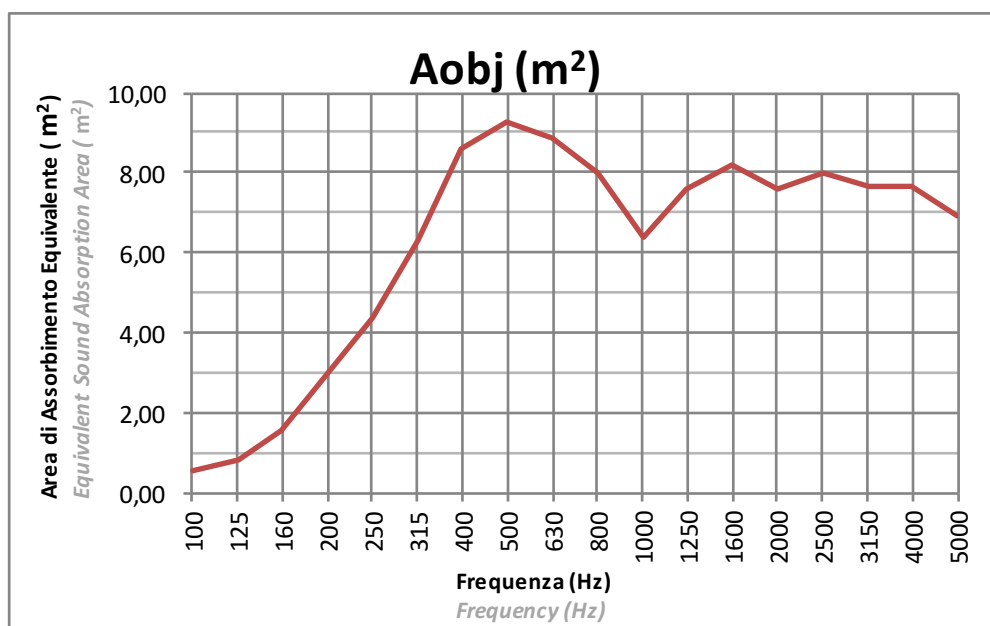
SNOWSOUND-FIBER 3

Tessuto: PLANARE
Fabric: FLAT

Installazione: Distanza da parete 20cm (D=20cm)
Installation: Distance from the wall 20cm (D=20cm)



La prova è stata eseguita secondo le prescrizioni della norma UNI EN ISO 354
Test executed according to UNI EN ISO 354

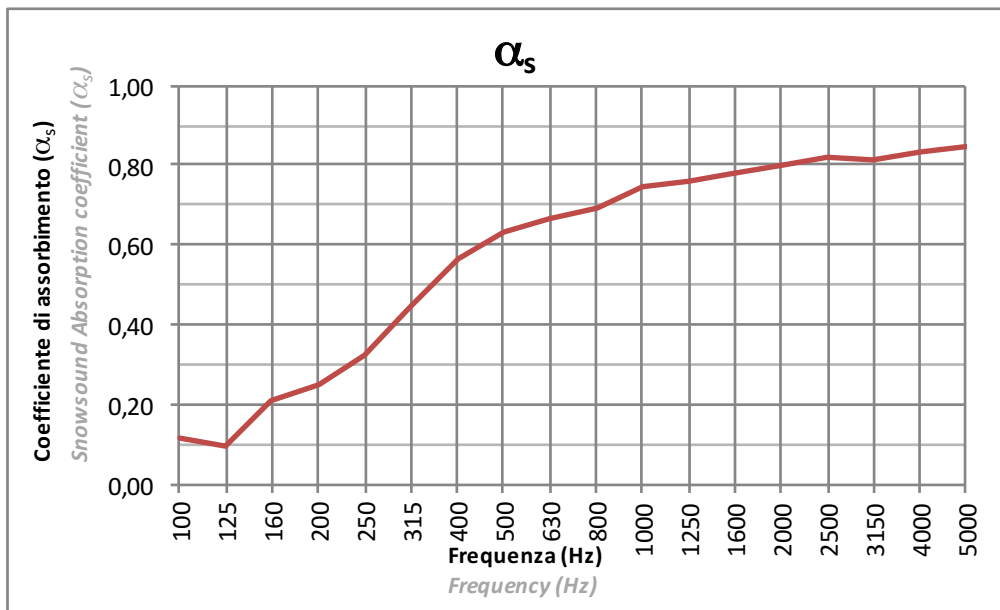
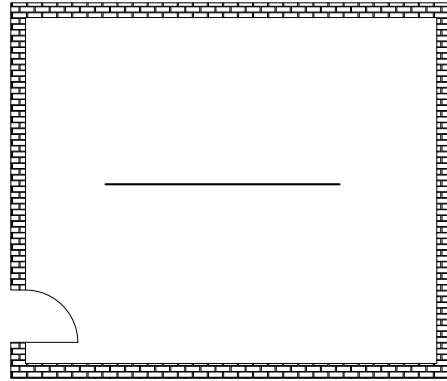


La prova è stata eseguita secondo le prescrizioni della norma UNI EN ISO 354
Test executed according to UNI EN ISO 354

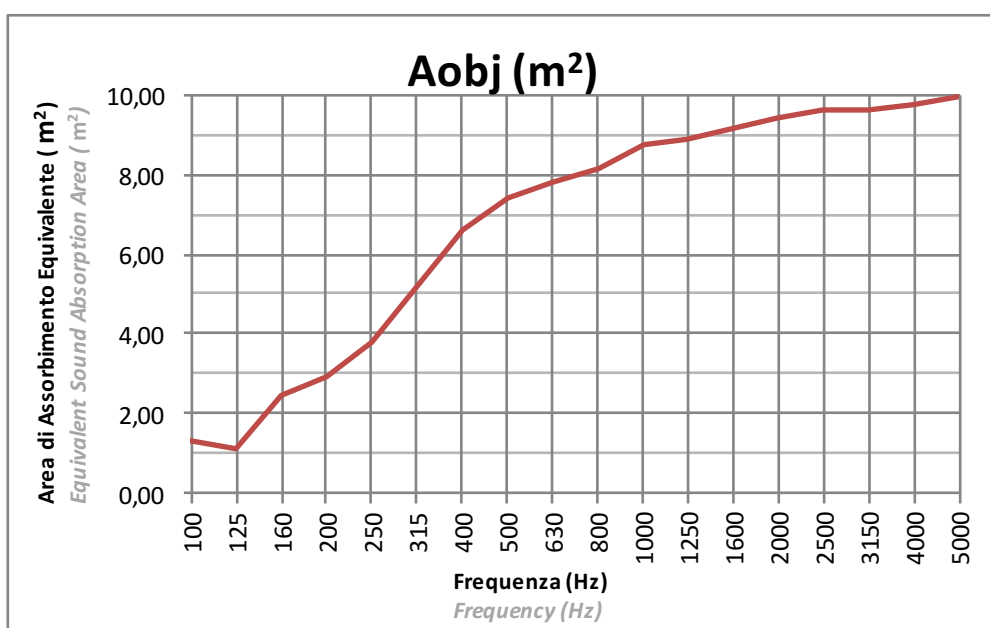
SNOWSOUND-FIBER 3

Tessuto: PLANARE
Fabric: FLAT

Installazione: CENTRO STANZA
Installation: CENTER OF THE ROOM



Procedura Sperimentale
Experimental Procedure

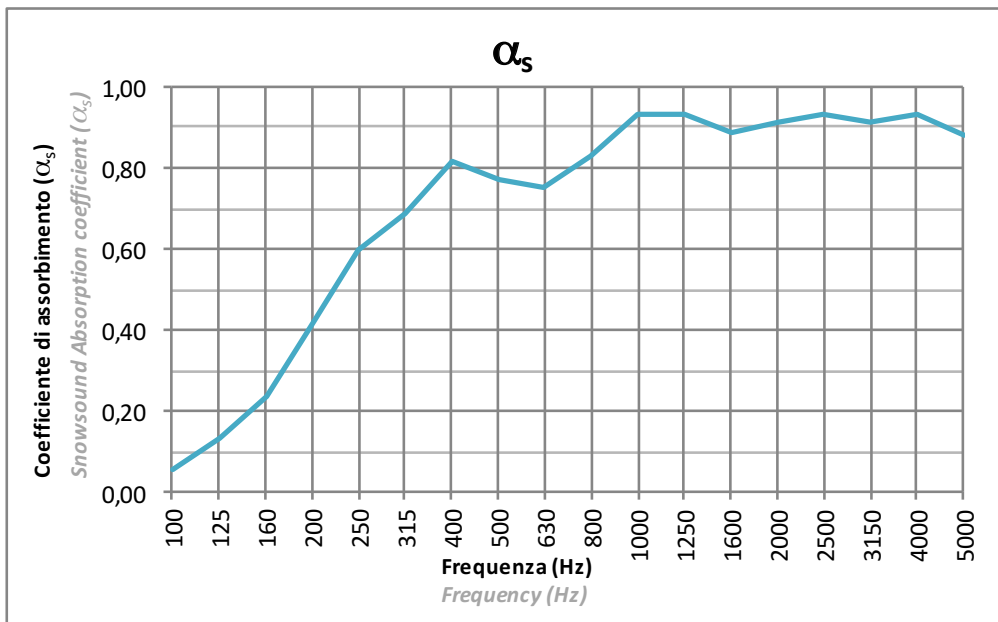
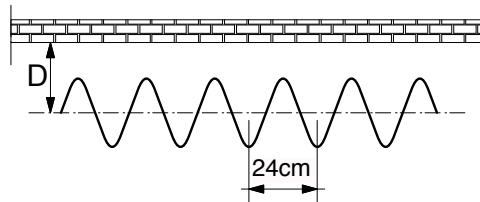


La prova è stata eseguita secondo le prescrizioni della norma UNI EN ISO 354
Test executed according to UNI EN ISO 354

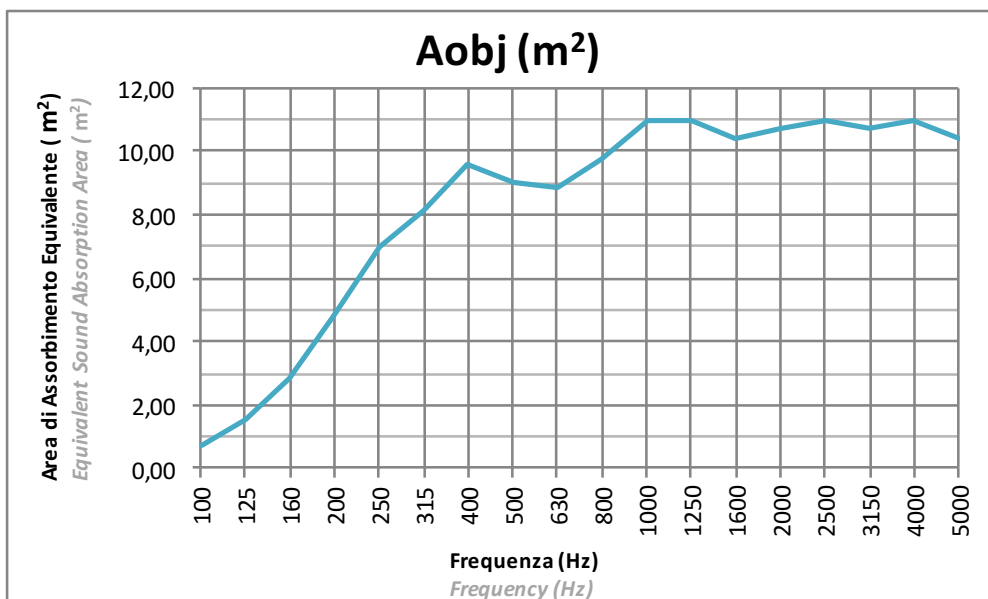
SNOWSOUND-FIBER 3

Tessuto: ONDULATO a passo 24cm
Fabric: WAVY (24cm pace)

Installazione: Distanza dall'asse da parete 20cm (D=20cm)
Installation: Wall to axis distance 20cm (D=20cm)



La prova è stata eseguita secondo le prescrizioni della norma UNI EN ISO 354
Test executed according to UNI EN ISO 354

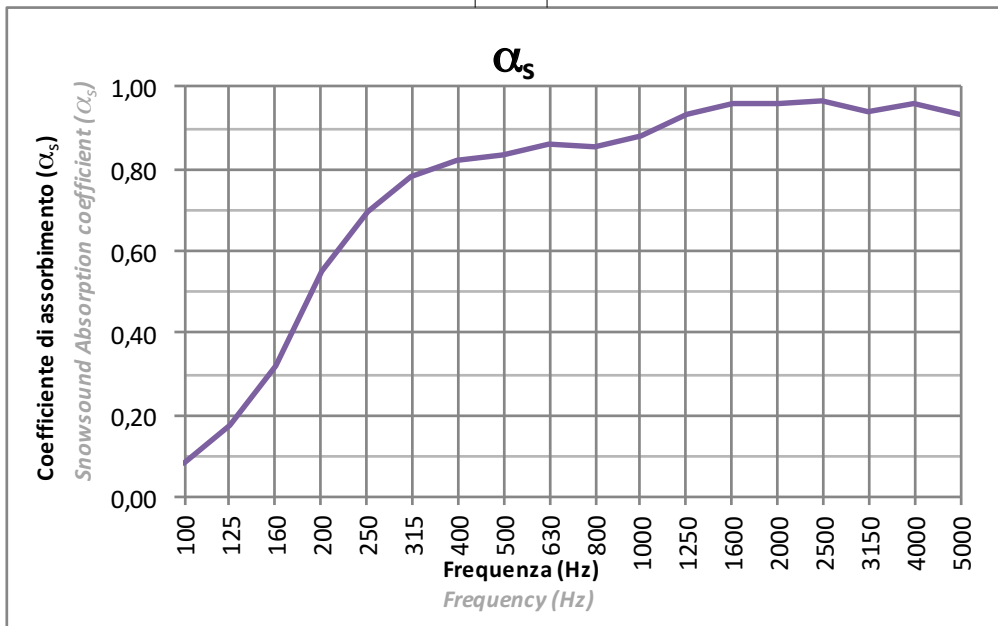
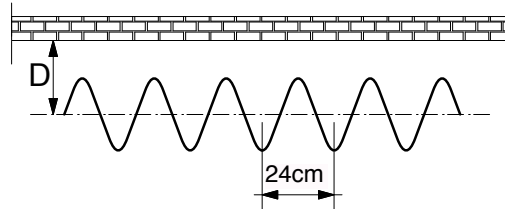


La prova è stata eseguita secondo le prescrizioni della norma UNI EN ISO 354
Test executed according to UNI EN ISO 354

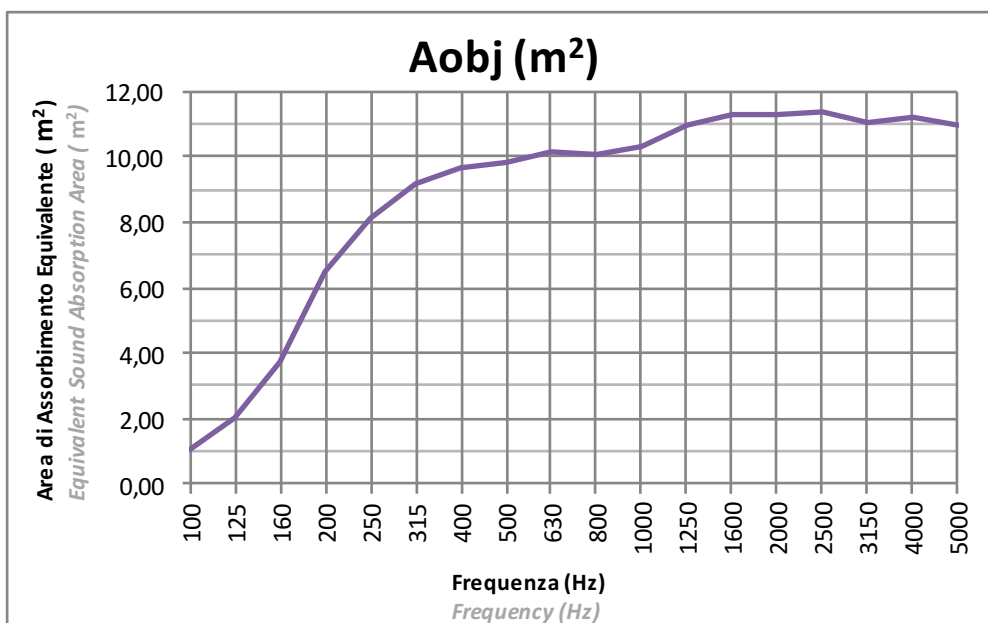
SNOWSOUND-FIBER 3

Tessuto: ONDULATO a passo 24cm
Fabric: WAVY (24cm pace)

Installazione: Distanza dall'asse da parete 30cm (D=30cm)
Installation: Wall to axis distance 30cm (D=30cm)



La prova è stata eseguita secondo le prescrizioni della norma UNI EN ISO 354
Test executed according to UNI EN ISO 354

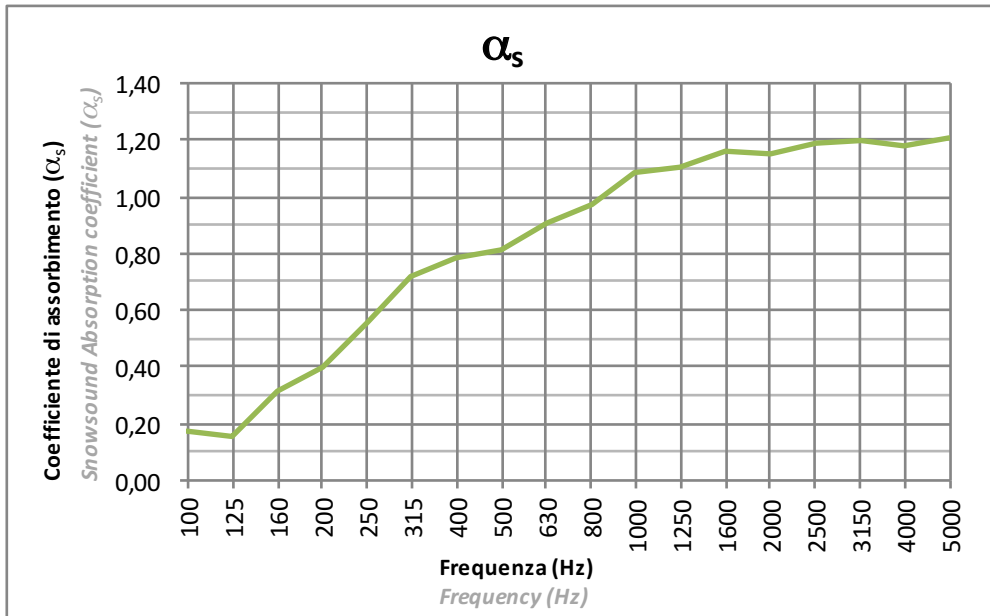
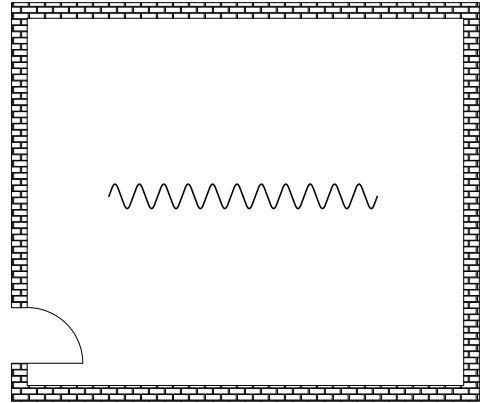
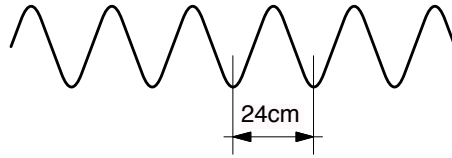


La prova è stata eseguita secondo le prescrizioni della norma UNI EN ISO 354
Test executed according to UNI EN ISO 354

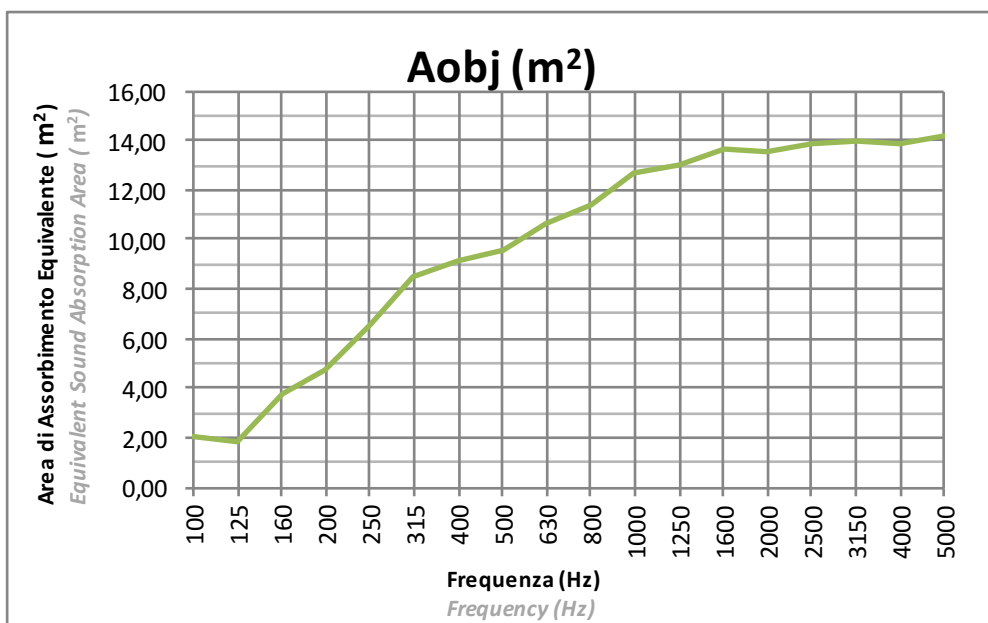
SNOWSOUND-FIBER 3

Tessuto: ONDULATO a passo 24cm
Fabric: WAVY (24cm pace)

Installazione: CENTRO STANZA
Installation: CENTER OF THE ROOM



Procedura Sperimentale
Experimental Procedure



La prova è stata eseguita secondo le prescrizioni della norma UNI EN ISO 354
Test executed according to UNI EN ISO 354