



**SNOWSOUND®**  
Acoustics & Well-Being Technologies

**SNOWKING**  
ACOUSTIC SOFA



# SNOWKING

## DESIGNER

(a+b) Dominoni, Quaquaro

"More than a sofa, we thought about a silent character who solemnly occupies corners (that tend to be spaces looking for a purpose) and affirms a strong stage presence while providing a precious contribution to the acoustic well-being of the community. When he finds himself with other elements of his family, they join to form islands, delimiting spaces, suggesting noble perspectives just like him: Snowking!"

(Annalisa Dominoni, Benedetto Quaquaro)



## SNOWKING

### SNOWKING

Modular system of upholstered sound-absorbing seats with supporting structure made of shaped wooden material to independently absorb low frequencies and covered with sound-absorbing polyurethanes and polyester which, combined with the upholstery in sound-absorbing Snowsound Fiber 3 Melange and Fiber 6 Velvet fabrics made of polyester fibres, allows the seat to absorb the different frequencies in the best possible way. The connection between two or more seats is made in the upper part by means of painted steel connectors screwed to the backrest structure and placed between the backrests and the crowns; in the lower part, the connection is made by means of metal attachments.







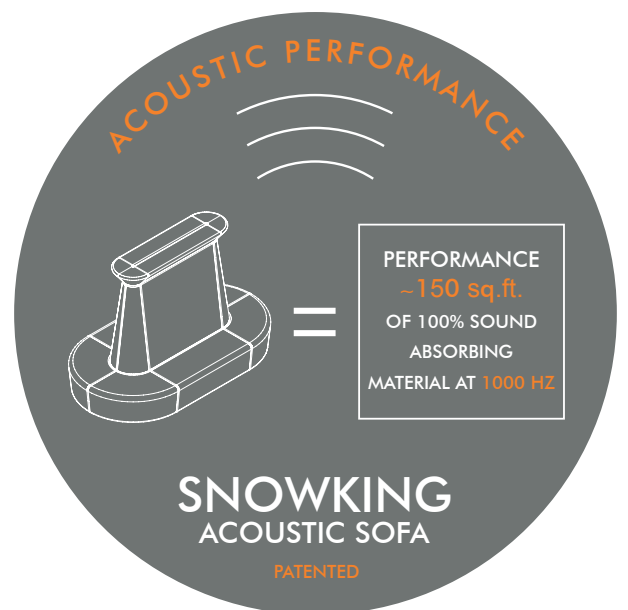


SNOWKING

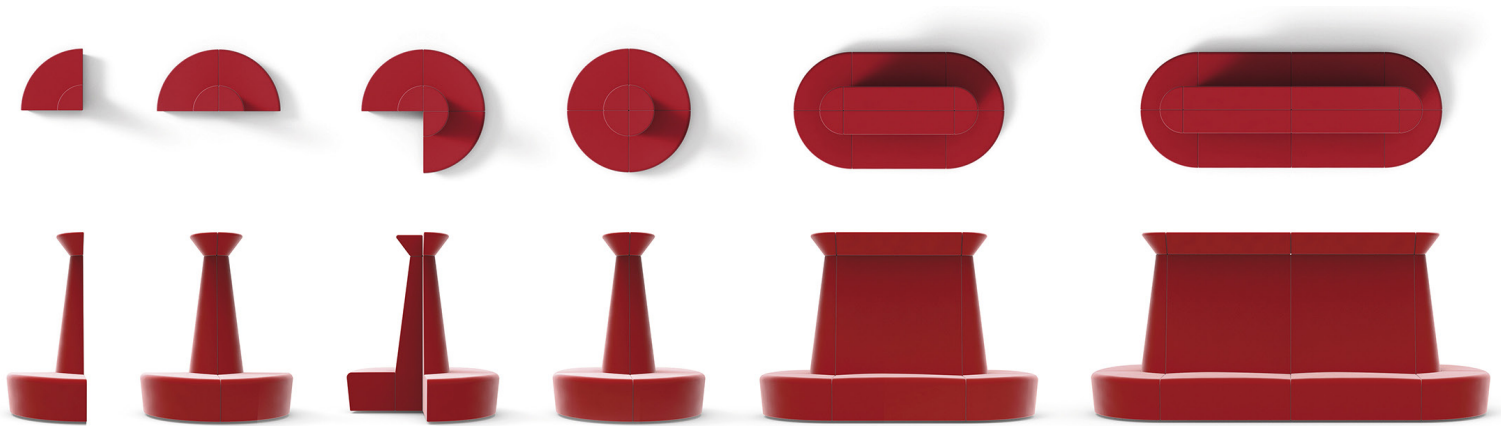




## SNOWKING







CONFIGURATION EXAMPLES

## A+E TECHNOLOGY | ELECTROMAGNETIC REDUCTION (Optional)

Metallized high-tech polymer fabric with pure silver for radio frequency reduction. Specifically designed to reduce the power of electromagnetic fields. However, it doesn't completely obstruct signals, allowing the use of smartphones and Wi-Fi networks. This radio frequency reducing fabric can be included inside sofas and other sound absorbing elements, combining sound absorption with reduction of electromagnetic fields. A new patented technology for the well-being of people.

Standard Standard	Frequenza MHz (Start-Stop) Frequency	Residual signal power
GSM / 850	825-895	0,85%
GSM / 900	870-960	3,34%
UMTS	1920-2170	0,56%
LTE	2510-2690	0,30%
WIFI	2400-2500	0,60%
5G	3400-3800	0,79%
WIFI	5100-5800	0,75%

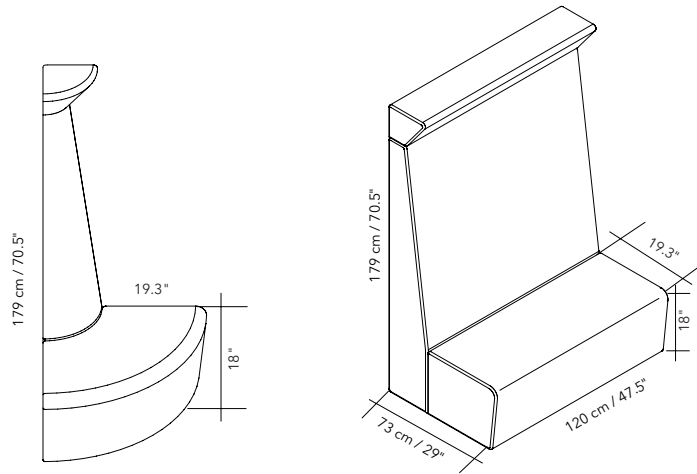




# SNOWKING

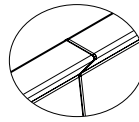
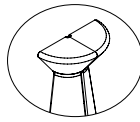
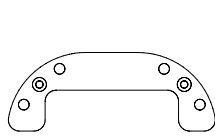
## PRODUCT SPECS

### SOFT-SEATING DIMENSIONS

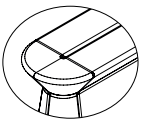
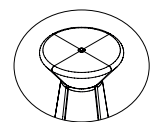
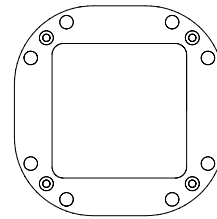


### CONNECTING HARDWARE

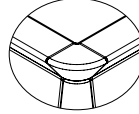
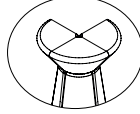
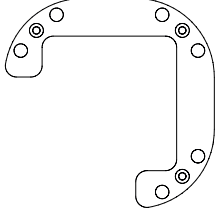
#### CONNECTS 2 SNOWKING SOFAS



#### CONNECTS 4 SNOWKING SOFAS



#### CONNECTS 3 SNOWKING SOFAS



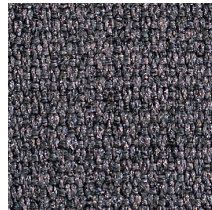
### FIBER COLORS



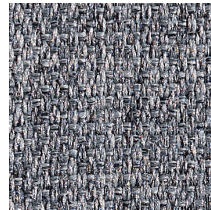
Fiber 3 Melange - 300  
Gray Ice



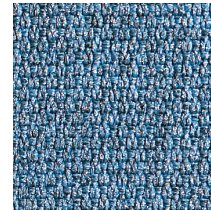
Fiber 3 Melange - 302  
Anthracite



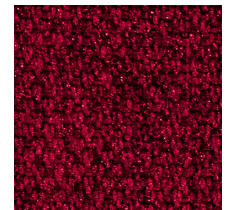
Fiber 3 Melange - 303  
Gray Taupe



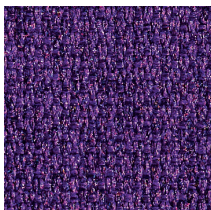
Fiber 3 Melange - 304  
Gray Beige



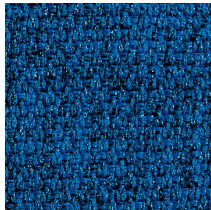
Fiber 3 Melange - 305  
Azure



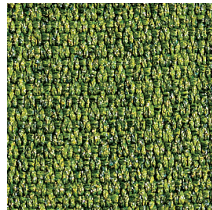
Fiber 3 Melange - 306  
Gray Burgundy



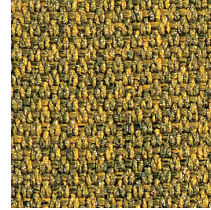
Fiber 3 Melange - 307  
Gray Plum



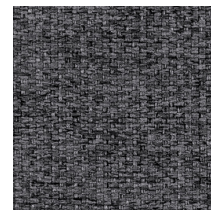
Fiber 3 Melange - 308  
Gray Blue



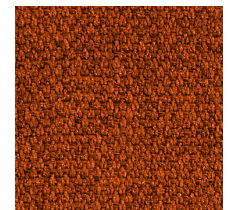
Fiber 3 Melange - 309  
Gray Green



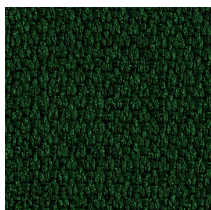
Fiber 3 Melange - 310  
Gray Gold



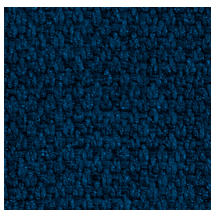
Fiber 3 Melange - 311  
Carbon Gray



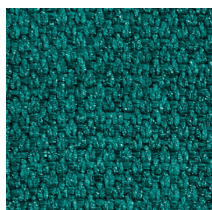
Fiber 3 Melange - 312  
Patina



Fiber 3 Melange - 313  
Evergreen



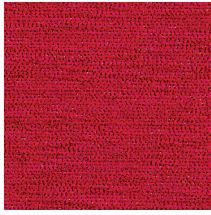
Fiber 3 Melange - 314  
Admiral Blue



Fiber 3 Melange - 315  
Fiji

# SNOWKING

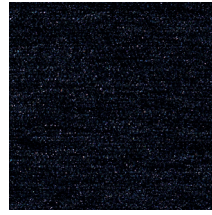
## FIBER COLORS



Fiber 6 Velvet - 600  
Red



Fiber 6 Velvet - 601  
Coffee Brown



Fiber 6 Velvet - 602  
Black



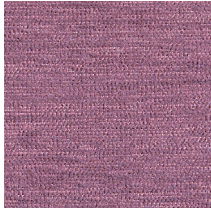
Fiber 6 Velvet - 603  
Teal



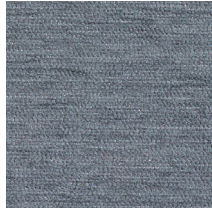
Fiber 6 Velvet - 604  
Beige



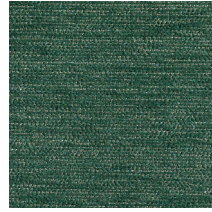
Fiber 6 Velvet - 605  
Cream



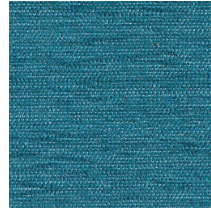
Fiber 6 Velvet - 606  
Powder Pink



Fiber 6 Velvet - 607  
Medium Gray



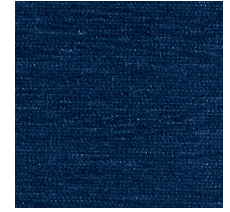
Fiber 6 Velvet - 608  
Forest Green



Fiber 6 Velvet - 609  
Powder Blue



Fiber 6 Velvet - 610  
Mustard Gold



Fiber 6 Velvet - 611  
Navy Blue

### PHYSICAL PROPERTIES FIBER 3 MELANGE

**Content:** 100% Fire Resistant, Acoustic Sound Absorbing Polyester Fibers with Patented Snowsound Technology

**Backing:** Unbacked

**Width:** 55" // 140 cm (tolerance + 0 - 3 cm)

**Weight:** 10.0 oz per square yard / 15.4 oz per linear yard

**Thickness:** 1 mm

### PHYSICAL PROPERTIES FIBER 6 VELVET

**Content:** 100% Fire Resistant, Acoustic Sound Absorbing Polyester Fibers with Patented Snowsound Technology

**Backing:** Unbacked

**Width:** 118" // 300 cm (tolerance + 0 - 3 cm)

**Weight:** 12.5 oz per square yard / 41.1 oz per linear yard

**Thickness:** 1.7 mm

### ACOUSTIC PERFORMANCE AND NOISE REDUCTION RATING

**Absorption Coefficient and NRC:**

**Class A Sound Absorption per ISO 11654 with NRC 1.0** achievable depending on installation. Please refer to on-line technical sheets for details

### ACOUSTIC PERFORMANCE AND NOISE REDUCTION RATING

**Absorption Coefficient and NRC:**

**Class A Sound Absorption per ISO 11654 with NRC 1.0** achievable depending on installation. Please refer to on-line technical sheets for details

### PERFORMANCE

**Flame Resistance:**

Passes NFPA 701 // NFPA 260 // CAL. TB 117 // UL 723 Class A // ASTM E 84 Class A

**Environment:**

100% Recyclable and GREENGUARD GOLD Certified

**Abrasion Resistance:**

50,000 rubs /cycles (tested according to Martindale Method)

**Colorfastness to Light:**

Grade 7 - "Outstanding" (Passes AATCC 16 / ISO 105-B02:2014)

**Colorfastness to Crocking:**

Wet - Grade 5. Dry - Grade 4/5. (Passes AATCC 8 / ISO 105-X12: 2016)

**Propensity to Surface Fuzzing and Pilling:**

Grade 5 - "no change" (Passes ISO 12945-2:2002)

**Washing and Maintenance:**

Normal machine washing up to 86 degrees Fahrenheit. Ironing on low heat acceptable. Dry cleaning is acceptable (any solvent except Trichloroethylene). Do not tumble dry.

### PERFORMANCE

**Flame Resistance:**

Passes NFPA 701 // NFPA 260 // CAL. TB 117 // UL 723 Class A // ASTM E 84 Class A

**Environment:**

100% Recyclable and GREENGUARD GOLD Certified

**Abrasion Resistance:**

65,000 rubs /cycles (tested according to Martindale Method)

**Colorfastness to Light:**

Grade 6/7 - "Excellent" (Passes AATCC 16 / ISO 105-B02:2014)

**Colorfastness to Wet and Dry Crocking:**

Wet & Dry - Grade 5 (Passes AATCC 8 / ISO 105-X12: 2016)

**Propensity to Surface Fuzzing and Pilling:**

Grade 5 - "no change" (Passes ISO 12945-2:2002)

**Washing and Maintenance:**

Normal machine washing up to 86 degrees Fahrenheit. Ironing on low heat acceptable. Dry cleaning is acceptable (any solvent except Trichloroethylene). Do not tumble dry.

## A+E TECHNOLOGY, ELECTROMAGNETIC REDUCTION (OPTIONAL)

The sofa is arranged to accommodate a layer of RF-reducing fabric inside if requested.

Inner cover consisting of a layer of radio frequency reducing fabric made of technopolymer metalized with pure silver capable of reducing radio frequencies without completely obstructing signals so that smartphones and Wi-Fi networks can continue to be used. The radio-frequency reducing fabric is inserted into the seats between the frame and the upholstery, making it possible to combine the functions of acoustic reverberation reduction and radio-frequency reduction. A new patented technology designed for people's well-being.



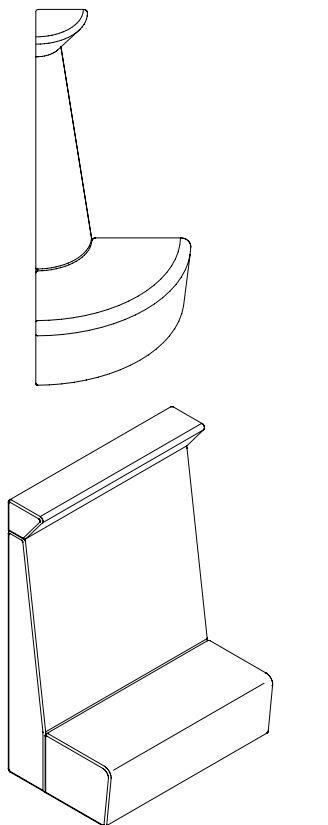


# SNOWKING

## ACOUSTIC PERFORMANCE

MEASUREMENT OF SOUND ABSORPTION COEFFICIENT CALCULATED ACCORDING TO ISO:354:2003 / ASTM C423 FREQUENCY Hz / Aobj (Aobj value = Sabins of absorption in the product in square feet)

(where Aobj is the equivalent sound absorption area of a 100% sound absorbing material, and one square foot of 100% sound absorbing material has a value of one Sabin).



**ITEM: 7DDQ1-F3**  
Fiber 3 Melange  
Textile cover

125 Hz / Aobj **7.00 sq.ft.**  
250 Hz / Aobj **10.87 sq.ft.**  
500 Hz / Aobj **15.18 sq.ft.**  
1000 Hz / Aobj **17.22 sq.ft.**  
2000 Hz / Aobj **19.38 sq.ft.**  
4000 Hz / Aobj **21.74 sq.ft.**

**ITEM: 7DDQ1-F6**  
Fiber 6 Velvet  
Textile cover

125 Hz / Aobj **7.64 sq.ft.**  
250 Hz / Aobj **11.73 sq.ft.**  
500 Hz / Aobj **16.04 sq.ft.**  
1000 Hz / Aobj **18.00 sq.ft.**  
2000 Hz / Aobj **19.80 sq.ft.**  
4000 Hz / Aobj **22.39 sq.ft.**

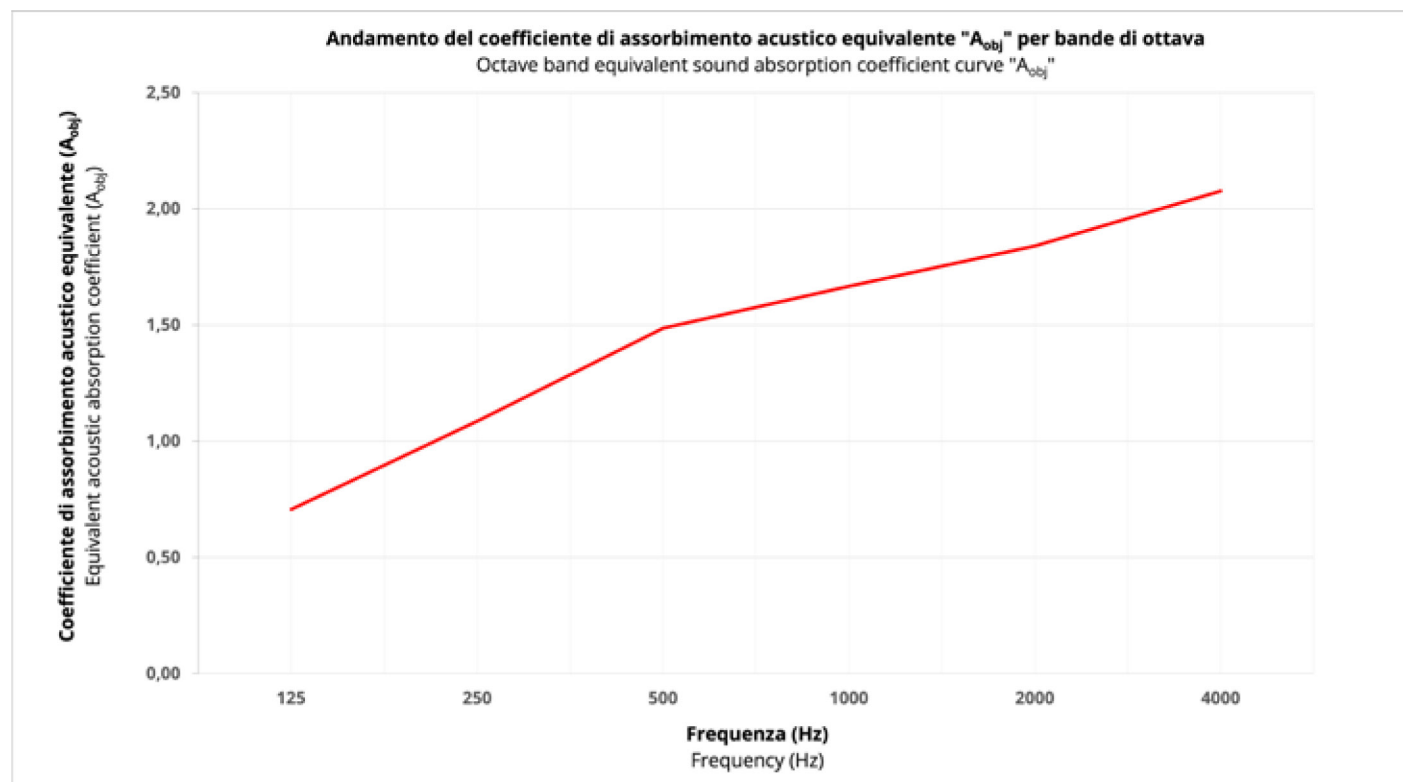
**ITEM: 7DDQ2-F3**  
Fiber 3 Melange  
Textile cover

125 Hz / Aobj **25.62 sq.ft.**  
250 Hz / Aobj **25.51 sq.ft.**  
500 Hz / Aobj **32.83 sq.ft.**  
1000 Hz / Aobj **38.00 sq.ft.**  
2000 Hz / Aobj **45.32 sq.ft.**  
4000 Hz / Aobj **52.42 sq.ft.**

**ITEM: 7DDQ2-F6**  
Fiber 6 Velvet  
Textile cover

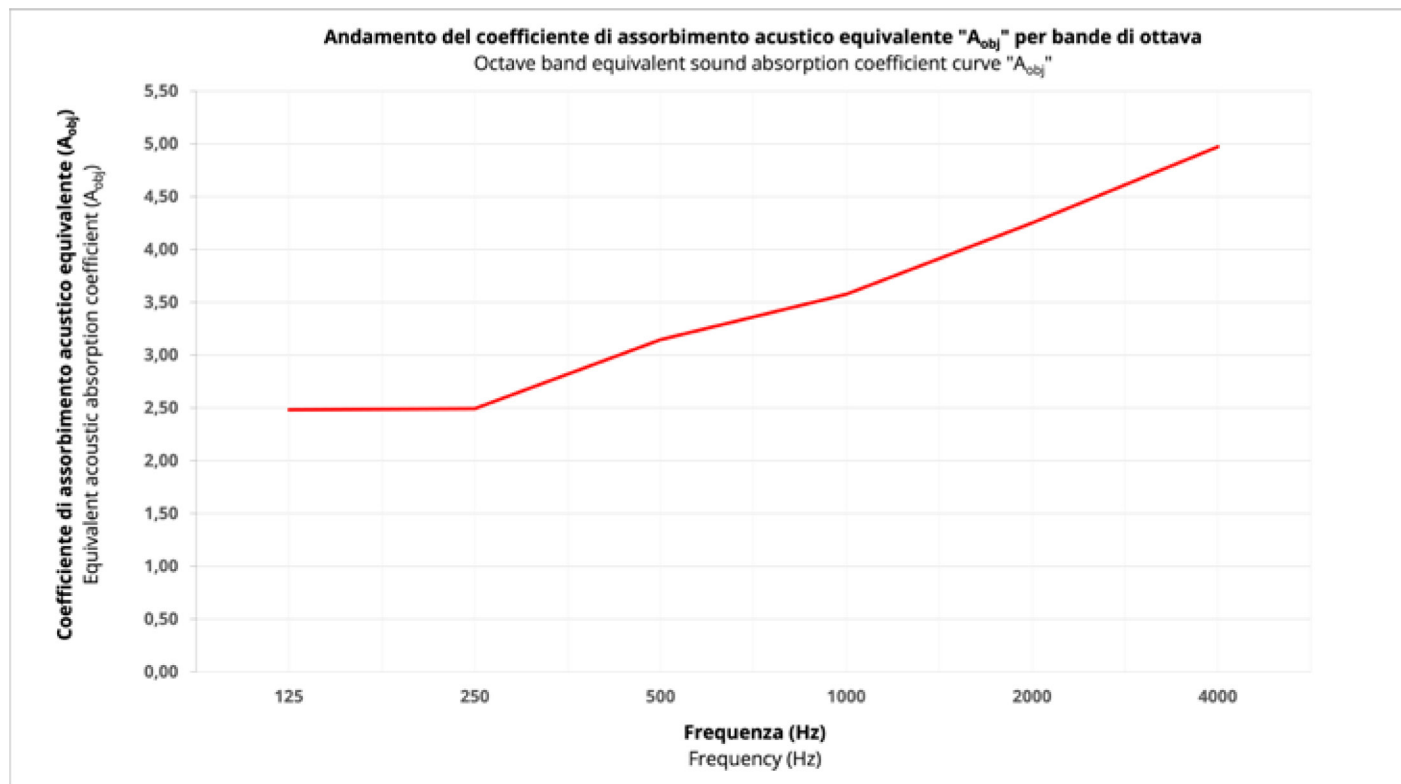
125 Hz / Aobj **26.69 sq.ft.**  
250 Hz / Aobj **26.80 sq.ft.**  
500 Hz / Aobj **34.00 sq.ft.**  
1000 Hz / Aobj **38.53 sq.ft.**  
2000 Hz / Aobj **45.75 sq.ft.**  
4000 Hz / Aobj **53.50 sq.ft.**

## SOFA SNOWKING 7DDQ1-F6 - FIBER 6 VELVET TEXTILE COVER



# SNOWKING

## SOFA SNOWKING 7DDQ2-F6 - FIBER 6 VELVET TEXTILE COVER





# SNOWSOUND®

Acoustics & Well-Being Technologies

## U.S.A / Canada / Mexico

Snowsound USA  
10018 Santa Fe Springs Road  
Santa Fe Springs, CA 90670  
Tel. 562.903.9550  
info@snowsoundusa.com  
www.snowsoundusa.com

## Los Angeles Showroom

Helms Design Center  
8745 Washington Blvd, Studio C  
Culver City, CA 90232 USA

## Chicago Showroom

222 Merchandise Mart Plaza  
Floor 11, Suite 1197  
Chicago, IL 60654 USA

## New York Showroom

New York Design Center (NYDC)  
200 Lexington Ave  
Floor 11, Suite 1106  
New York, NY 10016 USA



# Declare.

SCAN FOR MORE  
PRODUCTS



HEAR THE  
DIFFERENCE



Follow us: @snowsoundusa



www.snowsoundusa.com

©2023 Snowsound USA. All rights reserved.