

### Fabric Bolt Sizes

27.3 YARDS / 25 METERS

8.7 YARDS / 8 METERS

### PHYSICAL PROPERTIES

**Content:** 100% Fire Resistant, Acoustic Sound Absorbing Polyester Fibers with Patented Snowsound Technology

**Backing:** Unbacked

**Width:** 57" // 145 cm (tolerance + 0 - 3 cm)

**Weight:** 13.6 oz per square yard / 21.5 oz per linear yard

**Thickness:** 1.6 mm

### ACOUSTIC PERFORMANCE AND NOISE REDUCTION RATING

#### Absorption Coefficient and NRC:

**Class A Sound Absorption per ISO 11654 with NRC 1.0** achievable depending on installation. Please refer to on-line technical sheets for details

### PERFORMANCE

#### Flame Resistance:

Passes NFPA 701 // NFPA 260 // CAL. TB 117 // UL 723 Class A // ASTM E 84 Class A

#### Environment:

100% Recyclable and GREENGUARD GOLD Certified

#### Abrasion Resistance:

25,000 rubs /cycles (tested according to Martindale Method)

#### Colorfastness to Light:

Grade 6/7 - "Excellent" (Passes AATCC 16 / ISO 105-B02:2014)

#### Colorfastness to Wet and Dry Crocking:

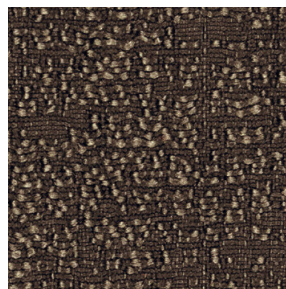
Wet & Dry - Grade 5 (Passes AATCC 8 / ISO 105-X12: 2016)

#### Propensity to Surface Fuzzing and Pilling:

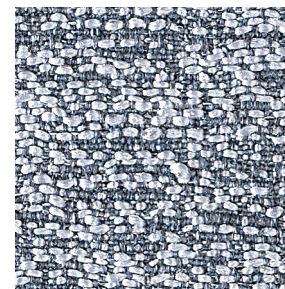
Grade 5 - "no change" (Passes ISO 12945-2:2002)

#### Washing and Maintenance:

Normal machine washing up to 86 degrees Fahrenheit. Ironing on low heat acceptable. Dry cleaning is acceptable (any solvent except Trichloroethylene). Do not tumble dry.



Dove Coffee (8.7 yd) 7F8-8-800  
Dove Coffee (27.3 yd) 7F8-25-800



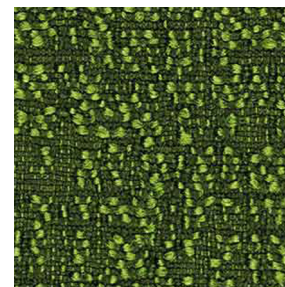
Gray Ice (8.7 yd) 7F8-8-801  
Gray Ice (27.3 yd) 7F8-25-801



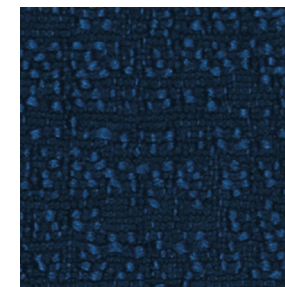
Gray Beige (8.7 yd) 7F8-8-802  
Gray Beige (27.3 yd) 7F8-25-802



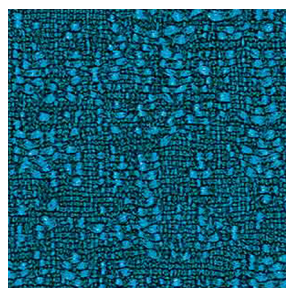
Graphite (8.7 yd) 7F8-8-803  
Graphite (27.3 yd) 7F8-25-803



Clover (8.7 yd) 7F8-8-804  
Clover (27.3 yd) 7F8-25-804



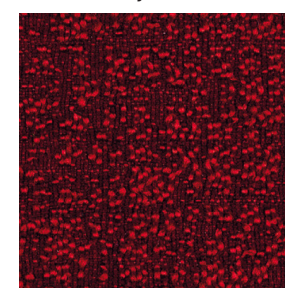
Oxford (8.7 yd) 7F8-8-805  
Oxford (27.3 yd) 7F8-25-805



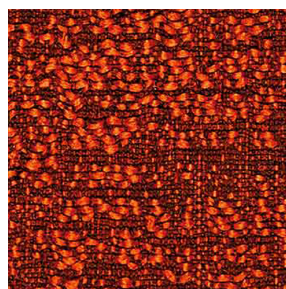
Syreni Blue (8.7 yd) 7F8-8-806  
Syreni Blue (27.3 yd) 7F8-25-806



Obsedian (8.7 yd) 7F8-8-807  
Obsedian (27.3 yd) 7F8-25-807



Garnet (8.7 yd) 7F8-8-808  
Garnet (27.3 yd) 7F8-25-808



Sandstone (8.7 yd) 7F8-8-809  
Sandstone (27.3 yd) 7F8-25-809