



**SNOWSOUND<sup>®</sup>**  
Acoustics & Well-Being Technologies

**FULCRO**  
SOUND ABSORBING COFFEE TABLE



FULCRO

**DESIGNER**

Claudio Bellini

Coffee tables available in a variety of sizes and finishes. The base features Snowsound sound-absorbing technologies.



## FULCRO ACOUSTIC COFFEE TABLES

Coffee tables made with steel and wooden supporting structure covered with sound-absorbing polyurethane and polyester that, combined with the Snowsound Fiber sound-absorbing fabric covering in polyester fibers, allows the elements to best absorb different frequencies.

Internal supporting structure is composed of a heavy steel base painted with epoxy powders, equipped with three holes for three screws for fixing the central column made of tubular steel painted with epoxy powders. Circular under-top plate made of epoxy powder-coated steel, fixed to this column by means of M8 screws, the table tops are fixed to the plate by means of 6 galvanized M6 screws.

Each element is equipped with 4 technopolymer feet. Table tops are available in 12 mm thick "HPL" laminate, white on the outside and black on the inside, with tapered perimeter edge, or in MDF wood and covered with oak wood essence or colored cement resin and protected with transparent water-based protective resin. The handcrafted nature of the workmanship makes each piece unique and exclusive.

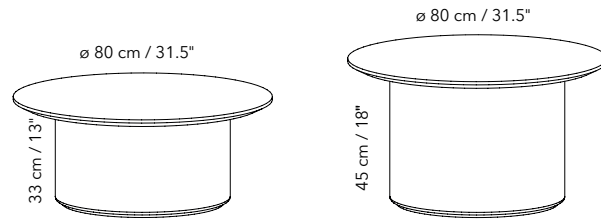




# FULCRO

## PRODUCT SPECS

### SOFT-SEATING DIMENSIONS



### TABLE TOP

12 MM Thick  
MDF  
HPL white laminate  
Light oak-veneer wood  
Cement colored resin



White/Black Edge HPL

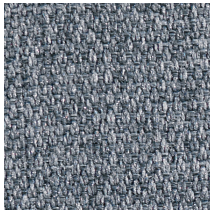


Cement Colored Resin

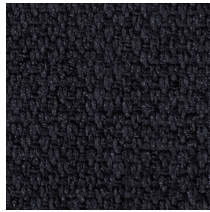


Light Oak Veneer

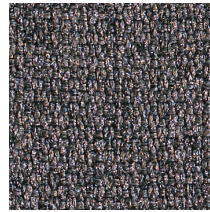
### FIBER COLORS



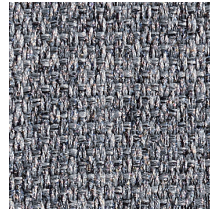
Fiber 3 Melange - 300  
Gray Ice



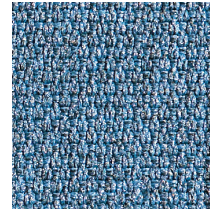
Fiber 3 Melange - 302  
Anthracite



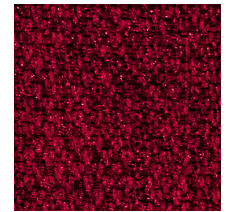
Fiber 3 Melange - 303  
Gray Taupe



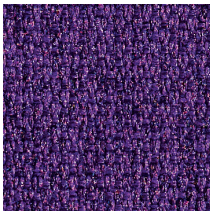
Fiber 3 Melange - 304  
Gray Beige



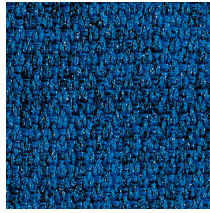
Fiber 3 Melange - 305  
Azure



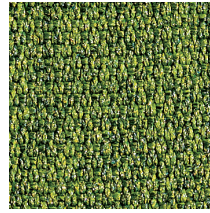
Fiber 3 Melange - 306  
Gray Burgundy



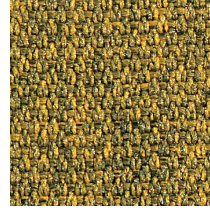
Fiber 3 Melange - 307  
Gray Plum



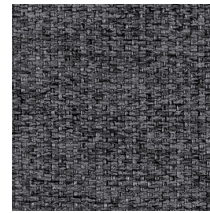
Fiber 3 Melange - 308  
Gray Blue



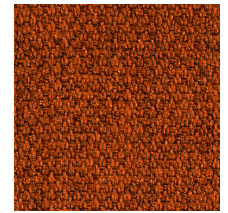
Fiber 3 Melange - 309  
Gray Green



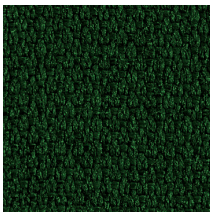
Fiber 3 Melange - 310  
Gray Gold



Fiber 3 Melange - 311  
Carbon Gray



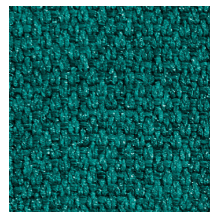
Fiber 3 Melange - 312  
Patina



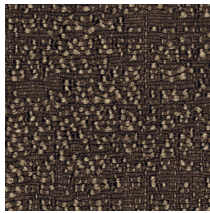
Fiber 3 Melange - 313  
Evergreen



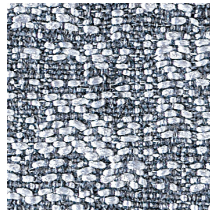
Fiber 3 Melange - 314  
Admiral Blue



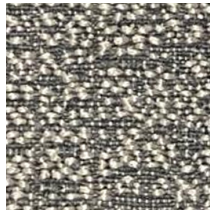
Fiber 3 Melange - 315  
Fiji



Fiber 8 Bouclé - 800  
Dove Coffee



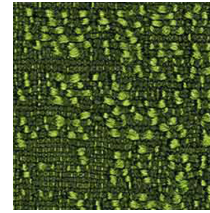
Fiber 8 Bouclé - 801  
Gray Ice



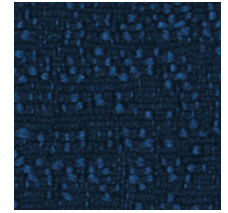
Fiber 8 Bouclé - 802  
Gray Beige



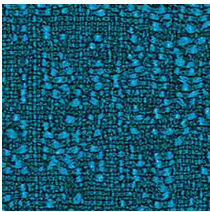
Fiber 8 Bouclé - 803  
Graphite



Fiber 8 Bouclé - 804  
Clover



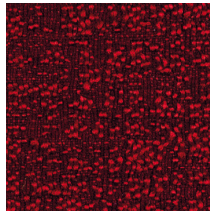
Fiber 8 Bouclé - 805  
Oxford



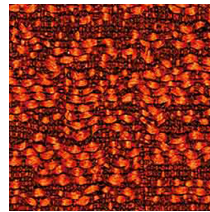
Fiber 8 Bouclé - 806  
Syreni Blue



Fiber 8 Bouclé - 807  
Obsidian



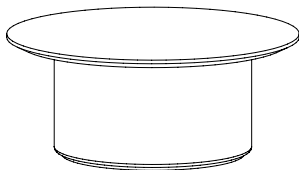
Fiber 8 Bouclé - 808  
Garnet



Fiber 8 Bouclé - 809  
Sandstone

# FULCRO

<p><b>PHYSICAL PROPERTIES FIBER 3 MELANGE</b></p> <p><b>Content:</b> 100% Fire Resistant, Acoustic Sound Absorbing Polyester Fibers with Patented Snowsound Technology</p> <p><b>Backing:</b> Unbacked</p> <p><b>Width:</b> 55" // 140 cm (tolerance + 0 - 3 cm)</p> <p><b>Weight:</b> 10.0 oz per square yard / 15.4 oz per linear yard</p> <p><b>Thickness:</b> 1 mm</p>	<p><b>PHYSICAL PROPERTIES OF FIBER 8 BOUCLÈ</b></p> <p><b>Content:</b> 100% Fire Resistant, Acoustic Sound Absorbing Polyester Fibers with Patented Snowsound Technology</p> <p><b>Backing:</b> Unbacked</p> <p><b>Width:</b> 57" // 145 cm (tolerance + 0 - 3 cm)</p> <p><b>Weight:</b> 13.6 oz per square yard / 21.5 oz per linear yard</p> <p><b>Thickness:</b> 1.6 mm</p>
<p><b>ACOUSTIC PERFORMANCE AND NOISE REDUCTION RATING</b></p> <p><b>Absorption Coefficient and NRC:</b>  <b>Class A Sound Absorption per ISO 11654 with NRC 1.0</b> achievable depending on installation. Please refer to on-line technical sheets for details</p>	<p><b>ACOUSTIC PERFORMANCE AND NOISE REDUCTION RATING</b></p> <p><b>Absorption Coefficient and NRC:</b>  <b>Class A Sound Absorption per ISO 11654 with NRC 1.0</b> achievable depending on installation. Please refer to on-line technical sheets for details</p>
<p><b>PERFORMANCE</b></p> <p><b>Flame Resistance:</b>          Passes NFPA 701 // NFPA 260 // CAL. TB 117 // UL 723 Class A // ASTM E 84 Class A</p> <p><b>Environment:</b>          100% Recyclable and GREENGUARD GOLD Certified</p> <p><b>Abrasion Resistance:</b>          50,000 rubs /cycles (tested according to Martindale Method)</p> <p><b>Colorfastness to Light:</b>          Grade 7 - "Outstanding" (Passes AATCC 16 / ISO 105-B02:2014)</p> <p><b>Colorfastness to Crocking:</b>          Wet - Grade 5. Dry - Grade 4/5. (Passes AATCC 8 / ISO 105-X12: 2016)</p> <p><b>Propensity to Surface Fuzzing and Pilling:</b>          Grade 5 - "no change" (Passes ISO 12945-2:2002)</p> <p><b>Washing and Maintenance:</b>          Normal machine washing up to 86 degrees Fahrenheit. Ironing on low heat acceptable. Dry cleaning is acceptable (any solvent except Trichloroethylene). Do not tumble dry.</p>	<p><b>PERFORMANCE</b></p> <p><b>Flame Resistance:</b>          Passes NFPA 701 // NFPA 260 // CAL. TB 117 // UL 723 Class A // ASTM E 84 Class A</p> <p><b>Environment:</b>          100% Recyclable and GREENGUARD GOLD Certified</p> <p><b>Abrasion Resistance:</b>          25,000 rubs /cycles (tested according to Martindale Method)</p> <p><b>Colorfastness to Light:</b>          Grade 6/7 - "Excellent" (Passes AATCC 16 / ISO 105-B02:2014)</p> <p><b>Colorfastness to Wet and Dry Crocking:</b>          Wet &amp; Dry - Grade 5 (Passes AATCC 8 / ISO 105-X12: 2016)</p> <p><b>Propensity to Surface Fuzzing and Pilling:</b>          Grade 5 - "no change" (Passes ISO 12945-2:2002)</p> <p><b>Washing and Maintenance:</b>          Normal machine washing up to 86 degrees Fahrenheit. Ironing on low heat acceptable. Dry cleaning is acceptable (any solvent except Trichloroethylene). Do not tumble dry.</p>

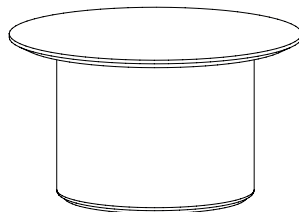


**ITEM: 7DB1-F3**  
Fiber 3 Melange  
Textile cover

125 Hz / Aobj **4.63 sq.ft.**  
 250 Hz / Aobj **7.75 sq.ft.**  
 500 Hz / Aobj **7.75 sq.ft.**  
 1000 Hz / Aobj **7.43 sq.ft.**  
 2000 Hz / Aobj **6.78 sq.ft.**  
 4000 Hz / Aobj **6.46 sq.ft.**

**ITEM: 7DB1-F8**  
Fiber 8 Bouclè  
Textile cover

125 Hz / Aobj **4.74 sq.ft.**  
 250 Hz / Aobj **7.86 sq.ft.**  
 500 Hz / Aobj **7.64 sq.ft.**  
 1000 Hz / Aobj **7.53 sq.ft.**  
 2000 Hz / Aobj **6.78 sq.ft.**  
 4000 Hz / Aobj **6.35 sq.ft.**



**ITEM: 7DB2-F3**  
Fiber 3 Melange  
Textile cover

125 Hz / Aobj **5.70 sq.ft.**  
 250 Hz / Aobj **8.07 sq.ft.**  
 500 Hz / Aobj **10.01 sq.ft.**  
 1000 Hz / Aobj **9.26 sq.ft.**  
 2000 Hz / Aobj **8.93 sq.ft.**  
 4000 Hz / Aobj **8.29 sq.ft.**

**ITEM: 7DB2-F6**  
Fiber 8 Bouclè  
Textile cover

125 Hz / Aobj **6.03 sq.ft.**  
 250 Hz / Aobj **8.93 sq.ft.**  
 500 Hz / Aobj **10.22 sq.ft.**  
 1000 Hz / Aobj **9.26 sq.ft.**  
 2000 Hz / Aobj **8.83 sq.ft.**  
 4000 Hz / Aobj **8.18 sq.ft.**

# SNOWSOUND®

Acoustics & Well-Being Technologies

## U.S.A / Canada / Mexico

Snowsound USA  
10018 Santa Fe Springs Road  
Santa Fe Springs, CA 90670  
Tel. 562.903.9550  
info@snowsoundusa.com  
www.snowsoundusa.com

## Los Angeles Showroom

Helms Design Center  
8745 Washington Blvd, Studio C  
Culver City, CA 90232 USA

## Chicago Showroom

222 Merchandise Mart Plaza  
Floor 11, Suite 1197  
Chicago, IL 60654 USA

## New York Showroom

New York Design Center (NYDC)  
200 Lexington Ave  
Floor 11, Suite 1106  
New York, NY 10016 USA



# Declare.

SCAN FOR MORE  
PRODUCTS



HEAR THE  
DIFFERENCE



Follow us: @snowsoundusa



www.snowsoundusa.com

©2023 Snowsound USA. All rights reserved.